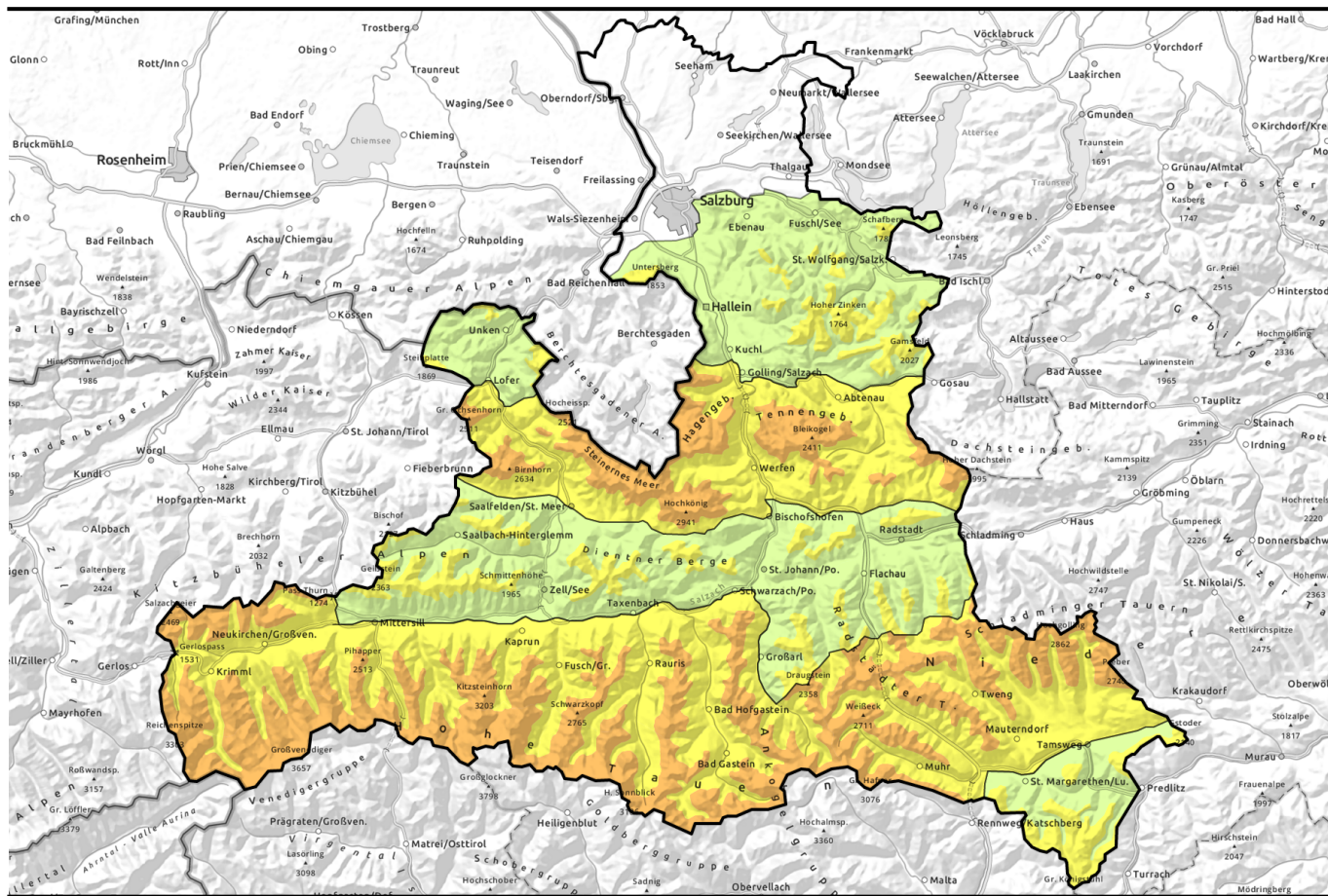


# Avalanche report 28.03.2023 through 29.03.2023

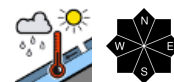


## Wet snow down below - Snowdrift problem up above



1500 m

Chiemgauer Alpen, Heutal, Reiteralpe, Untersbergstock, Osterhorngruppe, Gamsfeldgruppe, Pongauer Grasberge, Dientner Grasberge, Kitzbüheler Alpen, Glemmtal, Nockberge, Niedere Tauern Nord



2200 m

Loferer und Leoganger Steinberge, Steinernes Meer, Hochkönig, Hagengebirge, Göllstock, Tennengebirge, Gosaukamm, Großvenedigergruppe Nord, Großvenedigergruppe Alpenhauptkamm, Glocknergruppe Nord, Glocknergruppe Alpenhauptkamm, Goldberggruppe Nord, Goldberggruppe Alpenhauptkamm, Ankogelgruppe, Muhr, Niedere Tauern Alpenhauptkamm, Niedere Tauern Süd, Oberpinzgauer Grasberge



### Avalanche problems



### Danger ratings



### Expositions

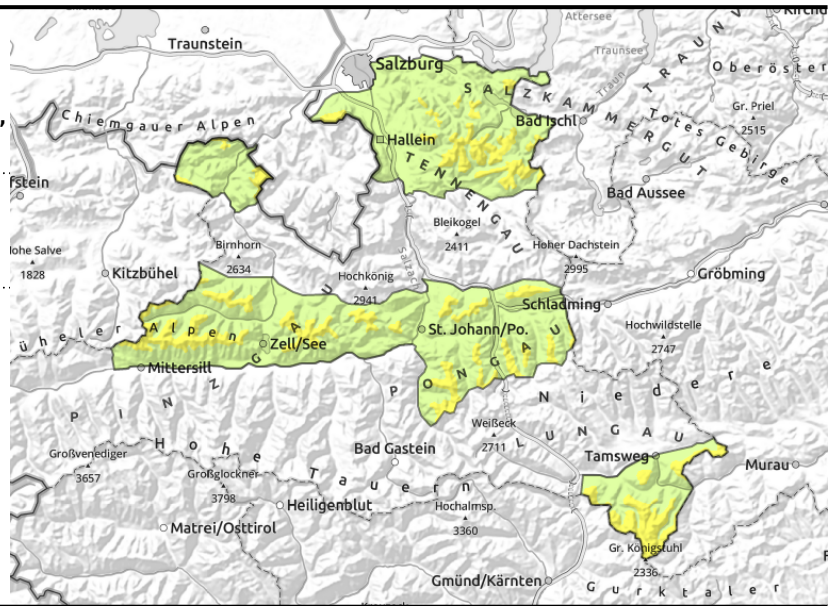


# Avalanche report **28.03.2023** through **29.03.2023**

**Chiemgauer Alpen, Heutal, Reiteralpe, Untersbergstock, Osterhorngruppe, Gamsfeldgruppe, Pongauer Grasberge, Dientner Grasberge, Kitzbüheler Alpen, Glemmtal, Nockberge, Niedere Tauern Nord**



mostly small wet loose-snow avalanches and glide-snow avalanches



## Caution: wet-snow avalanches in steep starting zones

Avalanche danger above 1500m is MODERATE, below that altitude danger is LOW (some fresh snow fell on bare ground).

Main danger: small (in isolated cases medium-sized) loose-snow avalanches (sometimes slab avalanches). The snowdrifts have consolidated well. If they trigger, then only by large additional loading above 2000 m on extremely steep slopes.

### Snowpack structure

Above intermediate altitudes there is 30-50 cm of fresh snow registered, more in the northern barrier cloud zones, much less in the Nockberge. Due to intense wind impact (W/NW) the distribution is highly varied. Bonding is generally good up to 2200m.

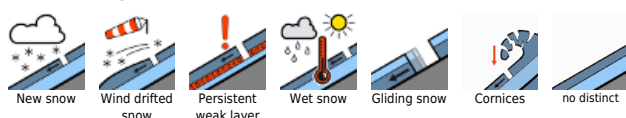
### Weather

On Wednesday, the peaks will often be shrouded in clouds, visibility reduced, a bit of rainfall or snowfall in the morning is possible. The snowfall level will swiftly ascend to 1800m. Temperatures will rise noticeably. At 2000 m: from -5 to +1 degree in the evening. Winds will be brisk to strong from SW to NW.

### Outlook

Wet-snow avalanche activity will increase on Thursday, the zero-degree level will rise to over 2500m and rainfall is possible up to very high altitudes.

#### Avalanche problems



#### Danger ratings

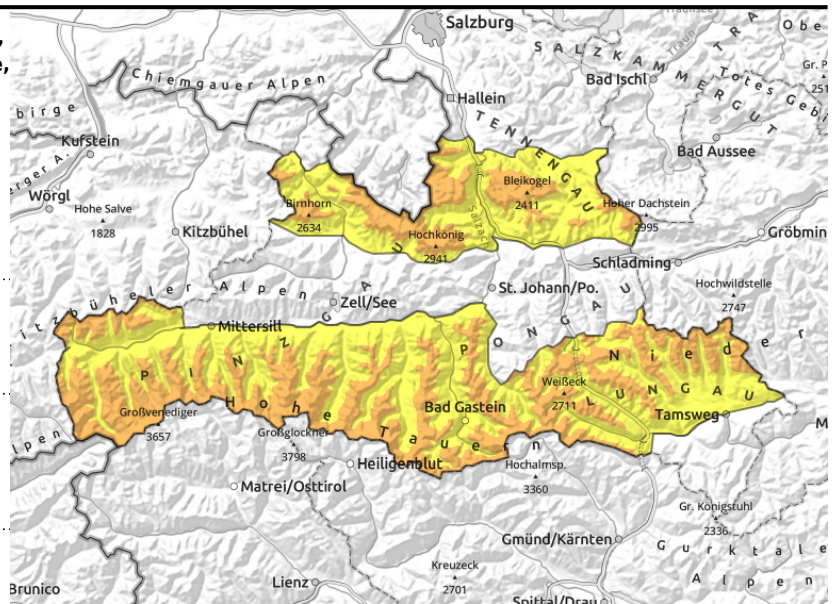


#### Expositions



# Avalanche report **28.03.2023** through **29.03.2023**

**Loferer und Leoganger Steinberge, Steinernes Meer, Hochkönig, Hagengebirge, Göllstock, Tennengebirge, Gosaukamm, Großvenedigergruppe Nord, Großvenedigergruppe Alpenhauptkamm, Glocknergruppe Nord, Glocknergruppe Alpenhauptkamm, Goldberggruppe Nord, Goldberggruppe Alpenhauptkamm, Ankogelgruppe, Muhr, Niedere Tauern Alpenhauptkamm, Niedere Tauern Süd, Oberpinzgauer Grasberge**



2200 m



fresh snowdrifts near to and distant from ridgelines, easily triggered at high altitudes



mostly small wet loose-snow avalanches, glide-snow avalanches

## Gradually settling snowpack

Avalanche danger due to the snowdrift problem is **CONSIDERABLE** above 2200m, below that altitude danger is **MODERATE** due to the wet-snow problem

At high and high alpine altitudes, a small-to-medium sized slab avalanche can be triggered even by the weight of one sole person. Most critical: abrupt drops in the terrain near to and distant from ridgelines on N/E facing slopes as well as in gullies and bowls in all aspects. The snow, despite low temperatures, is relatively heavy, which means it is hardly possible to escape from a triggered avalanche. In isolated cases, a slab can trigger naturally.

At intermediate altitudes the main danger is from small loose-snow or glide-snow avalanches which in isolated cases can trigger at high altitudes in case the sun shines for longer than expected.

## Snowpack structure

Above intermediate altitudes there is 30-50 cm of fresh snow registered, more in the northern barrier cloud zones, much less in the Nockberge. Due to intense wind impact (W/NW) the distribution is highly varied. Bonding is generally good up to 2200m. Above that altitude the snowpack becomes increasingly unfavorable. Slabs can fracture in the fresh fallen snow, possibly even in the cap of the old snowpack

## Weather

On Wednesday, the peaks will often be shrouded in clouds, visibility reduced, a bit of rainfall or snowfall in the morning is possible. The snowfall level will swiftly ascend to 1800m. Temperatures will rise noticeably. At 2000 m: from -5 to +1 degree in the evening. Winds will be brisk to strong from SW to NW.

## Outlook

Wet-snow avalanche activity will increase on Thursday, the zero-degree level will rise to over 2500m and rainfall is possible up to very high altitudes.

Translated by Jeffrey McCabe, [www.creativtrans.com](http://www.creativtrans.com)

### Avalanche problems



### Danger ratings



### Expositions

