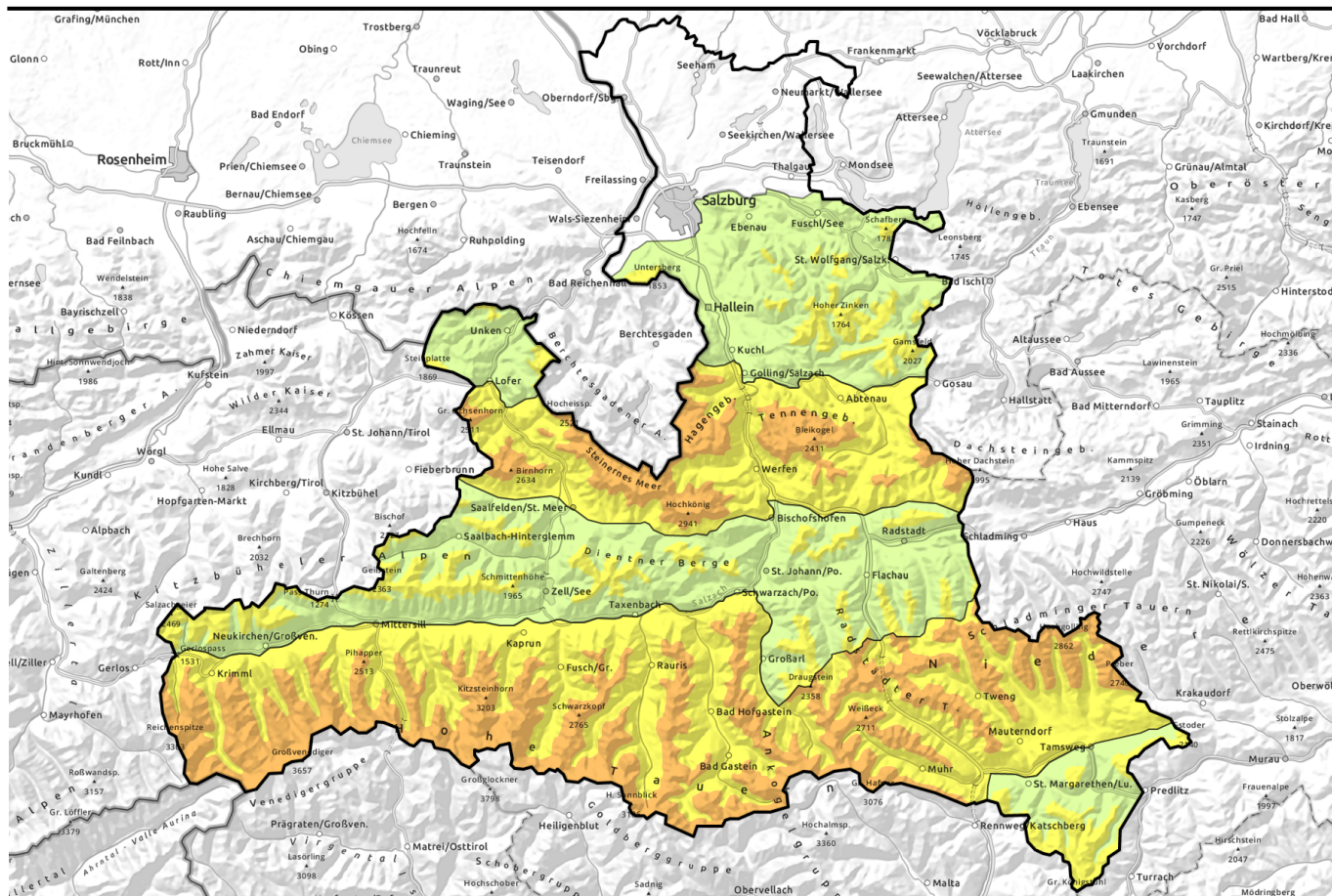
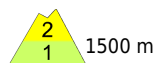


# Avalanche report for Tuesday, 28.03.2023



## Heavy snowfall, intense wind impact, cold



Chiemgauer Alpen, Heutal, Reiteralpe, Untersbergstock, Osterhorngruppe, Gamsfeldgruppe, Kitzbüheler Alpen, Glemmtal, Oberpinzgauer Grasberge, Dientner Grasberge, Pongauer Grasberge, Niedere Tauern Nord, Nockberge



Loferer und Leoganger Steinberge, Steinernes Meer, Hochkönig, Hagengebirge, Göllstock, Tennengebirge, Gosaukamm, Großvenedigergruppe Nord, Großvenedigergruppe Alpenhauptkamm, Glocknergruppe Nord, Glocknergruppe Alpenhauptkamm, Goldberggruppe Nord, Goldbergergruppe Alpenhauptkamm, Ankogelgruppe, Muhr, Niedere Tauern Alpenhauptkamm, Niedere Tauern Süd



### Avalanche problems



### Danger ratings

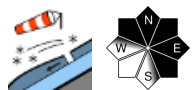


### Expositions

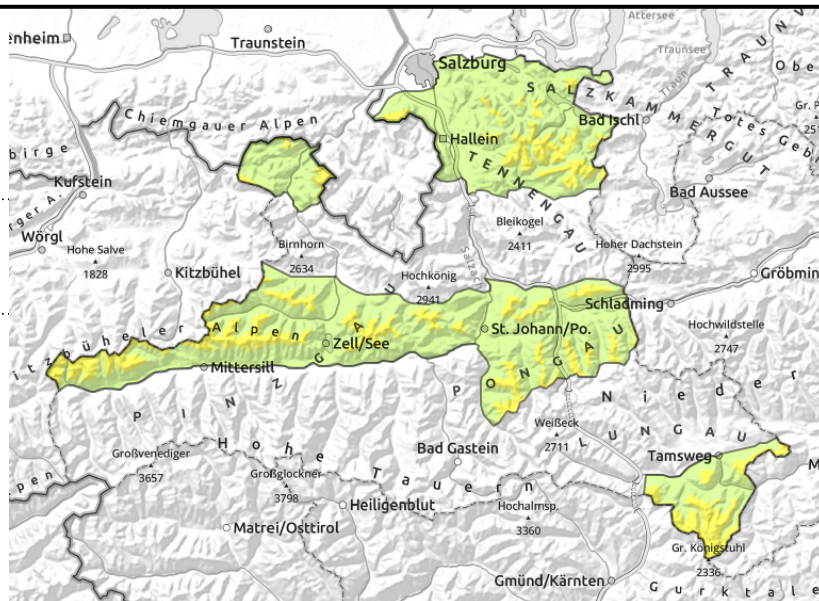


# Avalanche report for Tuesday, 28.03.2023

**Chiemgauer Alpen, Heutal, Reiteralpe, Untersbergstock, Osterhorngruppe, Gamsfeldgruppe, Kitzbüheler Alpen, Glemmtal, Oberpinzgauer Grasberge, Dientner Grasberge, Pongauer Grasberge, Niedere Tauern Nord, Nockberge**



freshly generated snowdrift accumulations near to and distant from ridgelines, proneness to triggering increases with ascending altitude



## Heed fresh snowdrifts

Avalanche danger above 1500m is MODERATE, below that altitude danger is LOW. Fresh snowdrift accumulations are the main danger. Most danger zones are on N/E facing slopes behind abrupt drops in the terrain (near to and distant from ridgelines) and in gullies and bowls in all aspects. Frequency of avalanche prone locations increases with ascending altitude. Generally large additional loading is required to release a small-to-medium slab avalanche or else in extremely steep terrain.

Naturally triggered small loose-snow and isolated glide-snow avalanches are possible in extremely steep terrain.

## Snowpack structure

Above intermediate altitudes there is 20-30 cm of fresh snow registered, more in the northern barrier cloud zones, much less in the Nockberge. Due to intense wind impact (W/NW) the distribution is highly varied. Bonding is generally good up to 1700-2100m, above that it deteriorates: the fresh, cold, brittle new snow lies deposited atop a blanketed melt-freeze crust where the fracture surface is breakable. Up to intermediate altitudes the snowpack on sunny slopes was only fragmented prior to the snowfall, or else no longer existent.

## Weather

Often still storm-strength winds, accumulated clouds, a bit of intermittent snowfall. In the afternoon the clouds will slowly disperse the snowfall taper off. Very cold. At 1500m: -7 degrees, at 2500 m: -15 degrees. The NW winds are blowing at 50-70 km/hr, transporting the snow in exposed terrain.

## Outlook

On Wednesday, rising temperatures, snowfall level ascending to 1500m. Proneness to triggering will recede somewhat, at low and intermediate altitudes small to medium sized wet loose-snow avalanches.

### Avalanche problems



### Danger ratings

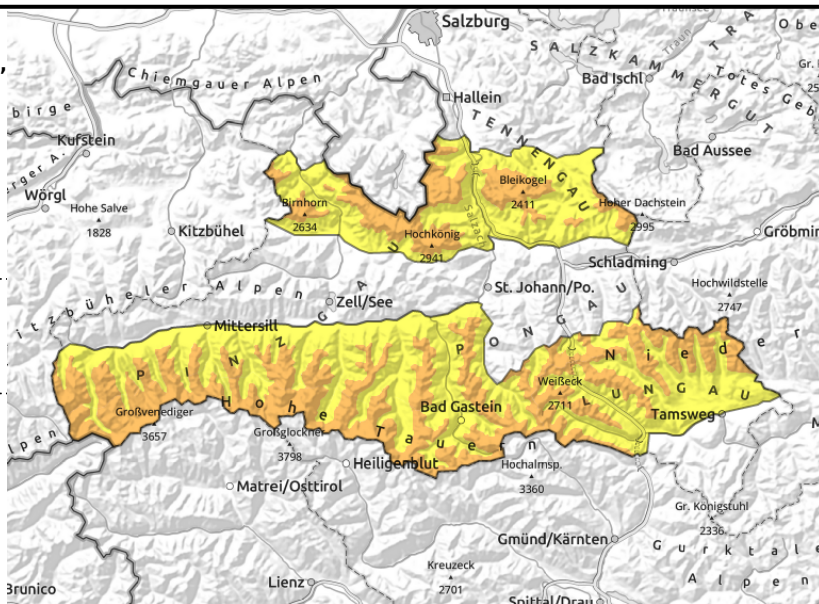


### Expositions



# Avalanche report for Tuesday, 28.03.2023

Loferer und Leoganger Steinberge, Steinernes Meer, Hochkönig, Hagengebirge, Göllstock, Tennengebirge, Gosaukamm, Großvenedigergruppe Nord, Großvenedigergruppe Alpenhauptkamm, Glocknergruppe Nord, Glocknergruppe Alpenhauptkamm, Goldberggruppe Nord, Goldberggruppe Alpenhauptkamm, Ankogelgruppe, Muhr, Niedere Tauern Alpenhauptkamm, Niedere Tauern Süd



1800 m



freshly generated snowdrift accumulations near to and distant from ridgelines, proneness to triggering high at high altitudes

## Heed fresh snowdrifts

Avalanche danger above 1500m is MODERATE, below that altitude danger is LOW.

Fresh snowdrift accumulations are the main danger. Most danger zones are on N/E facing slopes behind abrupt drops in the terrain (near to and distant from ridgelines) and in gullies and bowls in all aspects. Frequency of avalanche prone locations increases with ascending altitude. Generally large additional loading is required to release a small-to-medium slab avalanche or else in extremely steep terrain.

Naturally triggered small loose-snow and isolated glide-snow avalanches are possible in extremely steep terrain.

## Snowpack structure

Above intermediate altitudes there is 20-30 cm of fresh snow registered, more in the northern barrier cloud zones, much less in the Nockberge. Due to intense wind impact (W/NW) the distribution is highly varied. Bonding is generally good up to 1700-2100m, above that it deteriorates: the fresh, cold, brittle new snow lies deposited atop a blanketed melt-freeze crust where the fracture surface is breakable. Up to intermediate altitudes the snowpack on sunny slopes was only fragmented prior to the snowfall, or else no longer existent.

## Weather

Often still storm-strength winds, accumulated clouds, a bit of intermittent snowfall. In the afternoon the clouds will slowly disperse the snowfall taper off. Very cold. At 2000m: -12 to -8 degrees, at 3000 m: -20 to -14 degrees. The NW winds are blowing at 90 km/hr, transporting the snow in exposed terrain.

## Outlook

On Wednesday, rising temperatures, snowfall level ascending to 1500m. Proneness to triggering will recede somewhat, at low and intermediate altitudes small to medium sized wet loose-snow avalanches.

Translated by Jeffrey McCabe, [www.creativtrans.com](http://www.creativtrans.com)

### Avalanche problems



### Danger ratings



### Expositions

