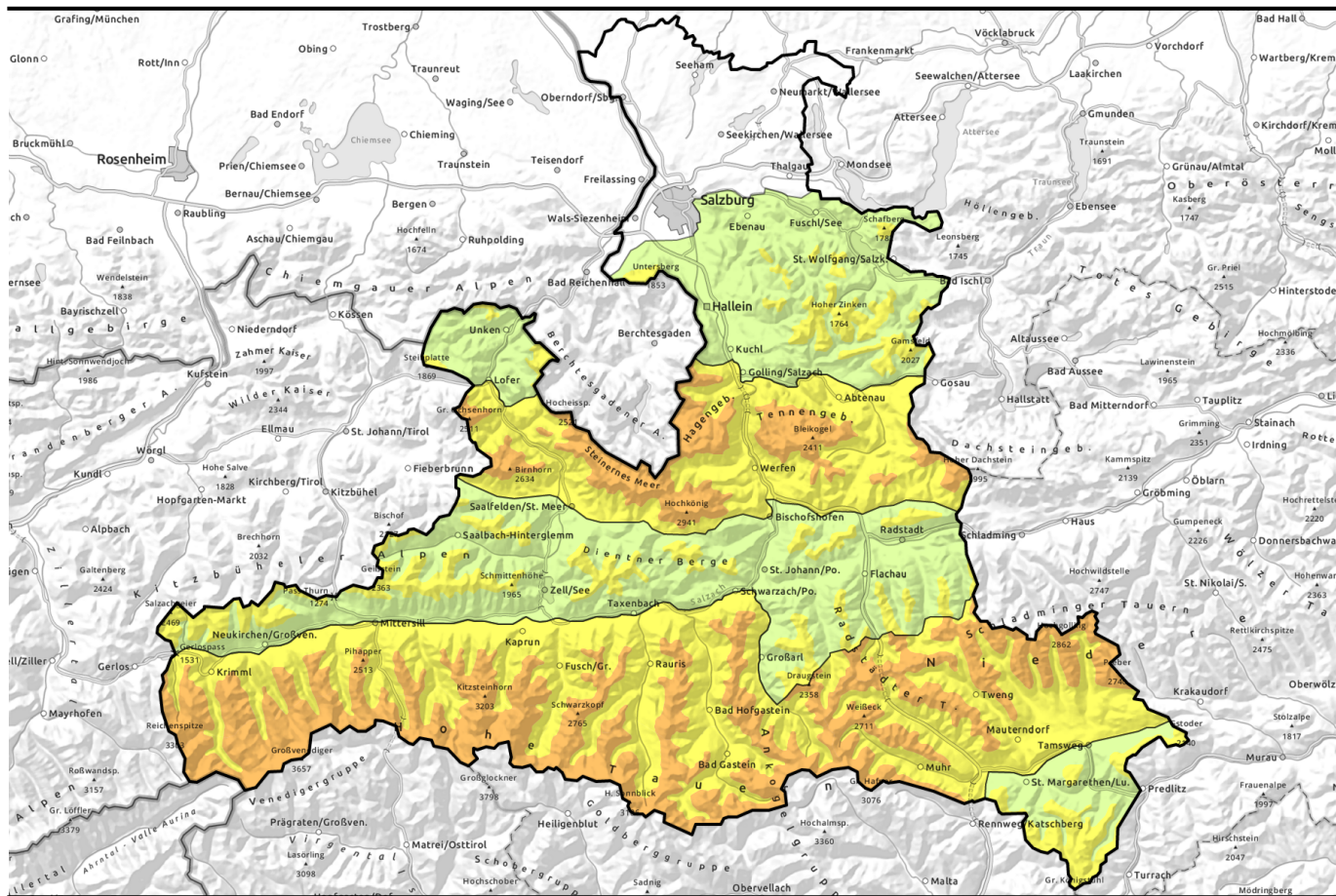


Avalanche report for Monday, 27.03.2023



Freshly generated snowdrift accumulations - Plummeting temperatures



1500 m

Chiemgauer Alpen, Heutal, Reiteralpe, Untersbergstock, Osterhorngruppe, Gamsfeldgruppe, Kitzbüheler Alpen, Glemmtal, Oberpinzgauer Grasberge, Dientner Grasberge, Pongauer Grasberge, Niedere Tauern Nord, Nockberge



2000 m

Loferer und Leoganger Steinberge, Steinernes Meer, Hochkönig, Hagengebirge, Göllstock, Tennengebirge, Gosaukamm, Großvenedigergruppe Nord, Großvenedigergruppe Alpenhauptkamm, Glocknergruppe Nord, Glocknergruppe Alpenhauptkamm, Goldberggruppe Nord, Goldberggruppe Alpenhauptkamm, Ankogelgruppe, Muhr, Niedere Tauern Alpenhauptkamm, Niedere Tauern Süd



Avalanche problems



Danger ratings

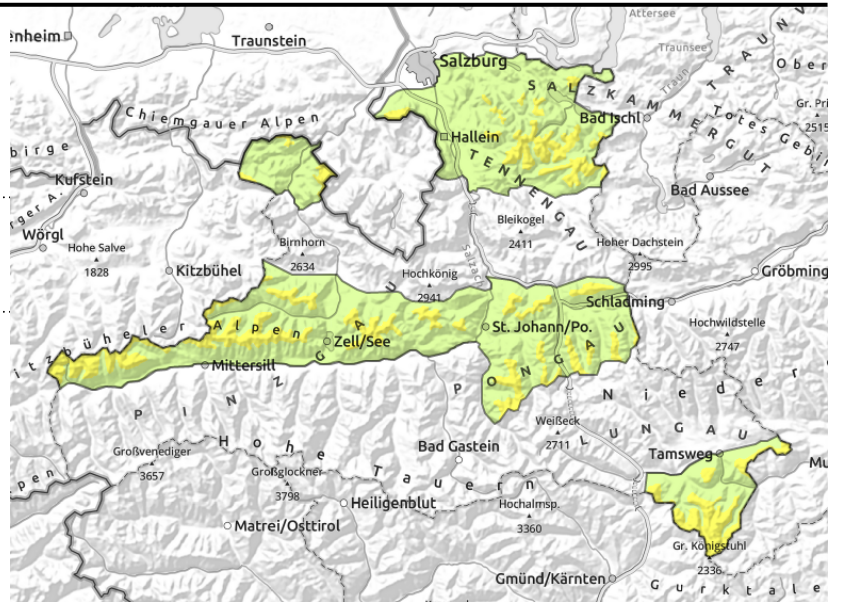
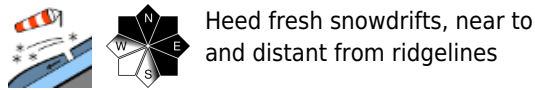


Expositions



Avalanche report for Monday, 27.03.2023

Chiemgauer Alpen, Heutal, Reiteralpe, Untersbergstock, Osterhorngruppe, Gamsfeldgruppe, Kitzbüheler Alpen, Glemmtal, Oberpinzgauer Grasberge, Dientner Grasberge, Pongauer Grasberge, Niedere Tauern Nord, Nockberge



Heed fresh snowdrifts

Avalanche danger above 1500m is MODERATE, below that altitude danger is LOW.

Fresh snowdrift accumulations are the main danger. Most danger zones are on N/E facing slopes behind abrupt drops in the terrain (near to and distant from ridgelines) and in gullies and bowls in all aspects. Frequency of avalanche prone locations increases with ascending altitude. Generally large additional loading is required to release a small-to-medium slab avalanche or else in extremely steep terrain.

Naturally triggered small loose-snow and isolated glide-snow avalanches are possible in extremely steep terrain.

Snowpack structure

The old snowpack is thoroughly wet, insofar as it still exists. On Sunday night, about 15 cm of fresh snow is anticipated. On Tuesday morning, further snowfall (15 cm). Bonding of fresh snow to old snowpack is generally good. Potential fracture points for slab avalanches are inside the fresh snow on top of which the winds can deposit new drifts.

Weather

Visibility often reduced. Persistent snowfall in the morning, in the afternoon with interims and ultimately there will be a bit of sunshine. Strong velocity NW winds, often reaching storm strength. Between Sunday evening and Monday evening, 10-30 cm of fresh fallen snow is expected, most in the northern barrier cloud regions, least in the Nockberge. At 2000 m: temperatures descending during the daytime from -5 to -10 degrees.

Outlook

On Tuesday, snowdrift conditions will improve. As of Wednesday, rising temperatures, thus, wet-snow avalanches will come to the forefront.

Avalanche problems



Danger ratings

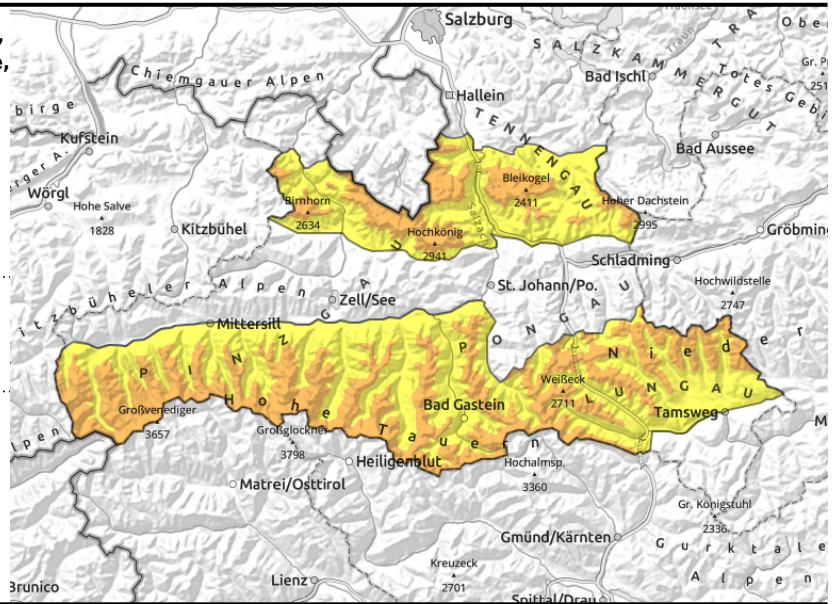


Expositions



Avalanche report for Monday, 27.03.2023

Loferer und Leoganger Steinberge, Steinernes Meer, Hochkönig, Hagengebirge, Göllstock, Tennengebirge, Gosaukamm, Großvenedigergruppe Nord, Großvenedigergruppe Alpenhauptkamm, Glocknergruppe Nord, Glocknergruppe Alpenhauptkamm, Goldberggruppe Nord, Goldberggruppe Alpenhauptkamm, Ankogelgruppe, Muhr, Niedere Tauern Alpenhauptkamm, Niedere Tauern Süd



fresh snowdrift accumulations, near to and distant from ridgelines

Heed fresh snowdrifts

Avalanche danger above 2000m is CONSIDERABLE, below that altitude danger is MODERATE.

Fresh snowdrift accumulations are the main danger. Most danger zones are on N/E facing slopes behind abrupt drops in the terrain (near to and distant from ridgelines) and in gullies and bowls in all aspects. Frequency of avalanche prone locations increases with ascending altitude. Generally large additional loading is required to release a small-to-medium slab avalanche or else in extremely steep terrain.

Naturally triggered small loose-snow and isolated glide-snow avalanches are possible in extremely steep terrain.

Snowpack structure

The old snowpack is thoroughly wet up to 2000m, insofar as it still exists. On Sunday night, about 15 cm of fresh snow is anticipated. On Tuesday morning, further snowfall (15 cm). Bonding of fresh snow to old snowpack is generally good. Potential fracture points for slab avalanches are inside the fresh snow on top of which the winds can deposit new drifts.

Weather

Visibility often reduced. Persistent snowfall in the morning, in the afternoon with interims and ultimately there will be a bit of sunshine. Strong velocity NW winds, often reaching storm strength. Between Sunday evening and Monday evening, 10-30 cm of fresh fallen snow is expected, most in the northern barrier cloud regions, least in the Nockberge. At 2000 m: temperatures descending during the daytime from -5 to -10 degrees.

Outlook

On Tuesday, snowdrift conditions will improve. As of Wednesday, rising temperatures, thus, wet-snow avalanches will come to the forefront.

Translated by Jeffrey McCabe, www.creativtrans.com

Avalanche problems



Danger ratings



Expositions

