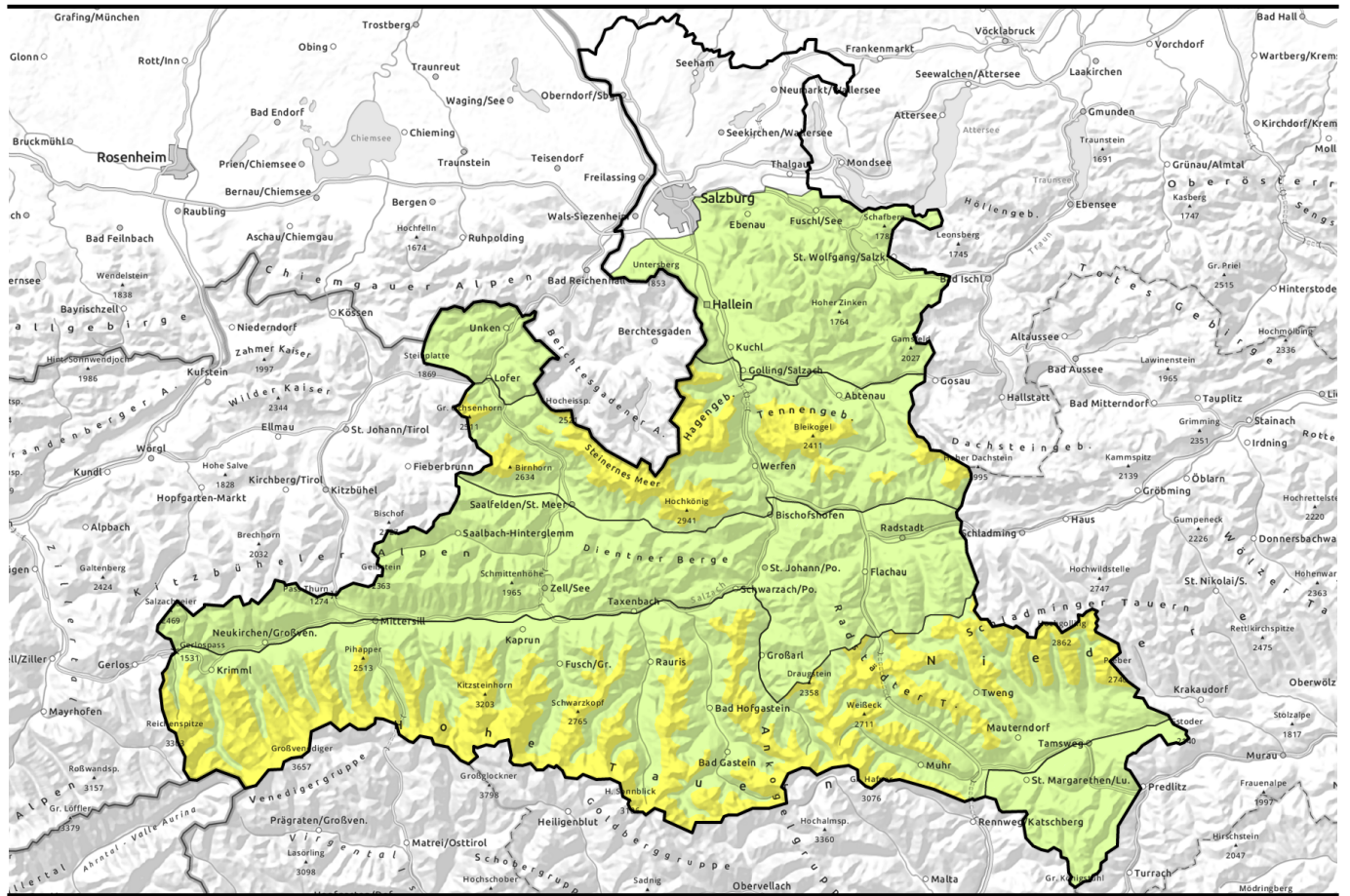


Avalanche report for Sunday, 26.03.2023



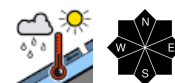
Isolated glide-snow avalanches, some snowdrifts at high altitudes



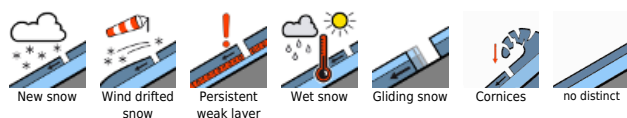
Großenedigergruppe Nord, Großenedigergruppe Alpenhauptkamm, Glocknergruppe Alpenhauptkamm, Glocknergruppe Nord, Goldberggruppe Alpenhauptkamm, Ankogelgruppe, Muhr, Goldberggruppe Nord, Loferer und Leoganger Steinberge, Steinernes Meer, Hochkönig, Hagengebirge, Göllstock, Tennengebirge, Gosaukamm, Niedere Tauern Süd, Niedere Tauern Alpenhauptkamm



Chiemgauer Alpen, Heutal, Reiteralpe, Osterhorngruppe, Gamsfeldgruppe, Untersbergstock, Nockberge, Pongauer Grasberge, Dientner Grasberge, Kitzbüheler Alpen, Glemmtal, Oberpinzgauer Grasberge, Niedere Tauern Nord



Avalanche problems



Danger ratings

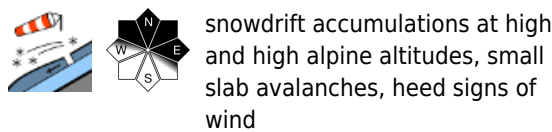
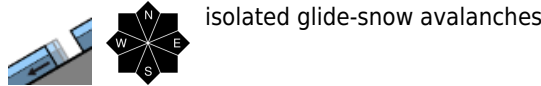
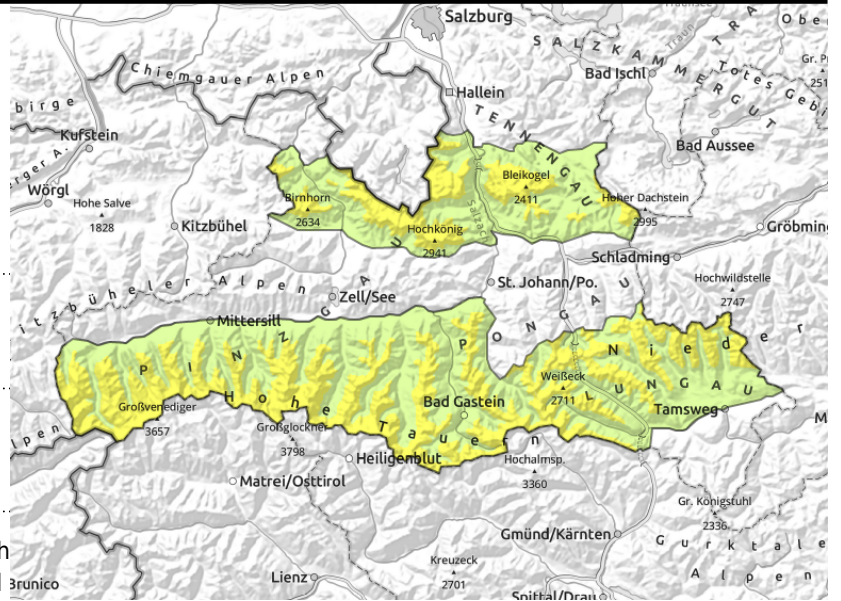


Expositions



Avalanche report for Sunday, 26.03.2023

Großvenedigergruppe Nord, Großvenedigergruppe Alpenhauptkamm, Glocknergruppe Alpenhauptkamm, Glocknergruppe Nord, Goldberggruppe Alpenhauptkamm, Ankogelgruppe, Muhr, Goldberggruppe Nord, Loferer und Leoganger Steinberge, Steinernes Meer, Hochkönig, Hagengebirge, Göllstock, Tennengebirge, Gosaukamm, Niedere Tauern Süd, Niedere Tauern Alpenhauptkamm



Caution: wet-snow and glide-snow avalanches

Avalanche danger above 2200 m is MODERATE, below that altitude danger is LOW. Small to medium slab avalanches can be triggered esp. on N/E facing slopes, mostly by large additional loading or else on extremely steep slopes. This releases the latest fresh fallen snow (10-30cm) which was compressed by winds. Most danger zones occur behind abrupt drops in the terrain and at entries into gullies and bowls. Frequency of avalanche prone locations increases with ascending altitude. Caution urged in extremely steep terrain - danger of falls. Also abrupt drops in the terrain should be circumvented.

Naturally triggered glide-snow avalanches are possible in terrain which has not yet discharged, also small loose-snow avalanches (at intermediate altitudes wet, at high altitudes dry) can trigger in rocky steep terrain and possibly sweep away the snow beneath it.

Snowpack structure

The snowpack is thoroughly wet up to over 2000 m. On Saturday night, clear skies will help a melt-freeze crust to form. At high altitudes, 10-30 cm of fresh snow will be deposited atop the old snowpack. Bonding of uppermost layers deteriorates with ascending altitude.

Weather

On Sunday, some sunshine in early morning, then clouds will move in. In the afternoon, rainfall and snowfall from the west will set in. In the Pongau and Lungau, precipitation will not start until 5 or 6 o'clock, the snowfall level will descend from 2000 m down to nearly 1400 m in the evening. In the morning, moderate to brisk southerly winds, in the afternoon winds will shift to northwesterly. At 2000 m: -3 degrees, at midday 0 degrees, towards evening then lower. At 3000m: -8 degrees.

Outlook

Fresh snow and winds on Monday will increase avalanche danger. Snowdrifts will accumulate.

Avalanche problems



Danger ratings

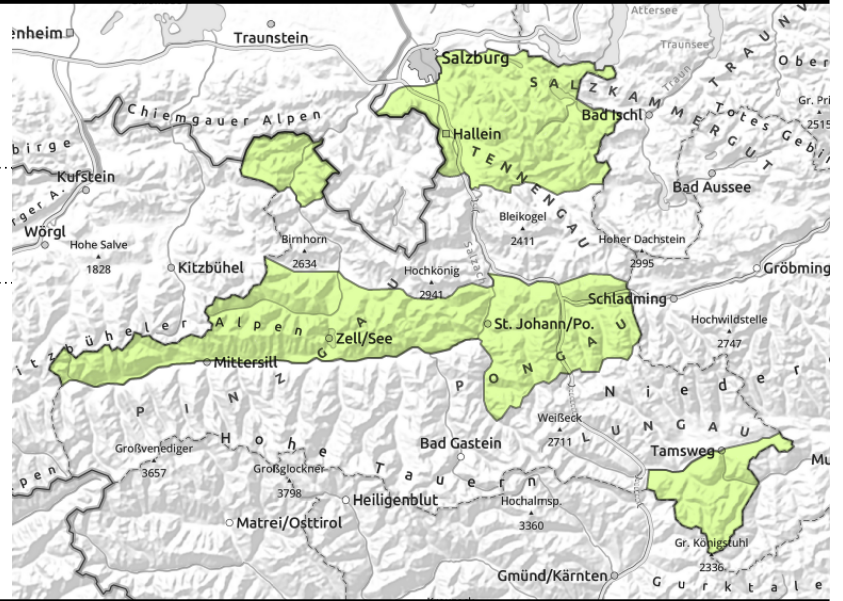


Expositions



Avalanche report for Sunday, 26.03.2023

Chiemgauer Alpen, Heutal, Reiteralpe, Osterhorngruppe, Gamsfeldgruppe, Untersbergstock, Nockberge, Pongauer Grasberge, Dientner Grasberge, Kitzbüheler Alpen, Glemmtal, Oberpinzgauer Grasberge, Niedere Tauern Nord



small wet loose-snow avalanches

Isolated glide-snow avalanches

Avalanche danger is LOW, At intermediate altitudes small-to-medium sized wet-snow and glide-snow avalanches can trigger from zones which have not yet discharged.

Snowpack structure

The snowpack is thoroughly wet up to over 2000 m but low in tensions. Most is stable wet snow. On Saturday night, partially clear skies, a melt-freeze crust can form (partially capable of bearing loads). A few cm of fresh snow atop the crust, sometimes breakable crusts.

Weather

On Sunday, some sunshine in early morning, then clouds will move in. In the afternoon, rainfall and snowfall from the west will set in. In the Pongau and Lungau, precipitation will not start until 5 or 6 o'clock, the snowfall level will descend from 2000 m down to nearly 1400 m in the evening. In the morning, moderate to brisk southerly winds, in the afternoon winds will shift to northwesterly. At 2000 m: -3 degrees, at midday 0 degrees, towards evening then lower. At 3000m: -8 degrees.

Outlook

Fresh snow and winds on Monday will increase avalanche danger. Snowdrifts will accumulate.

Translated by Jeffrey McCabe, www.creativtrans.com

Avalanche problems



Danger ratings



Expositions

