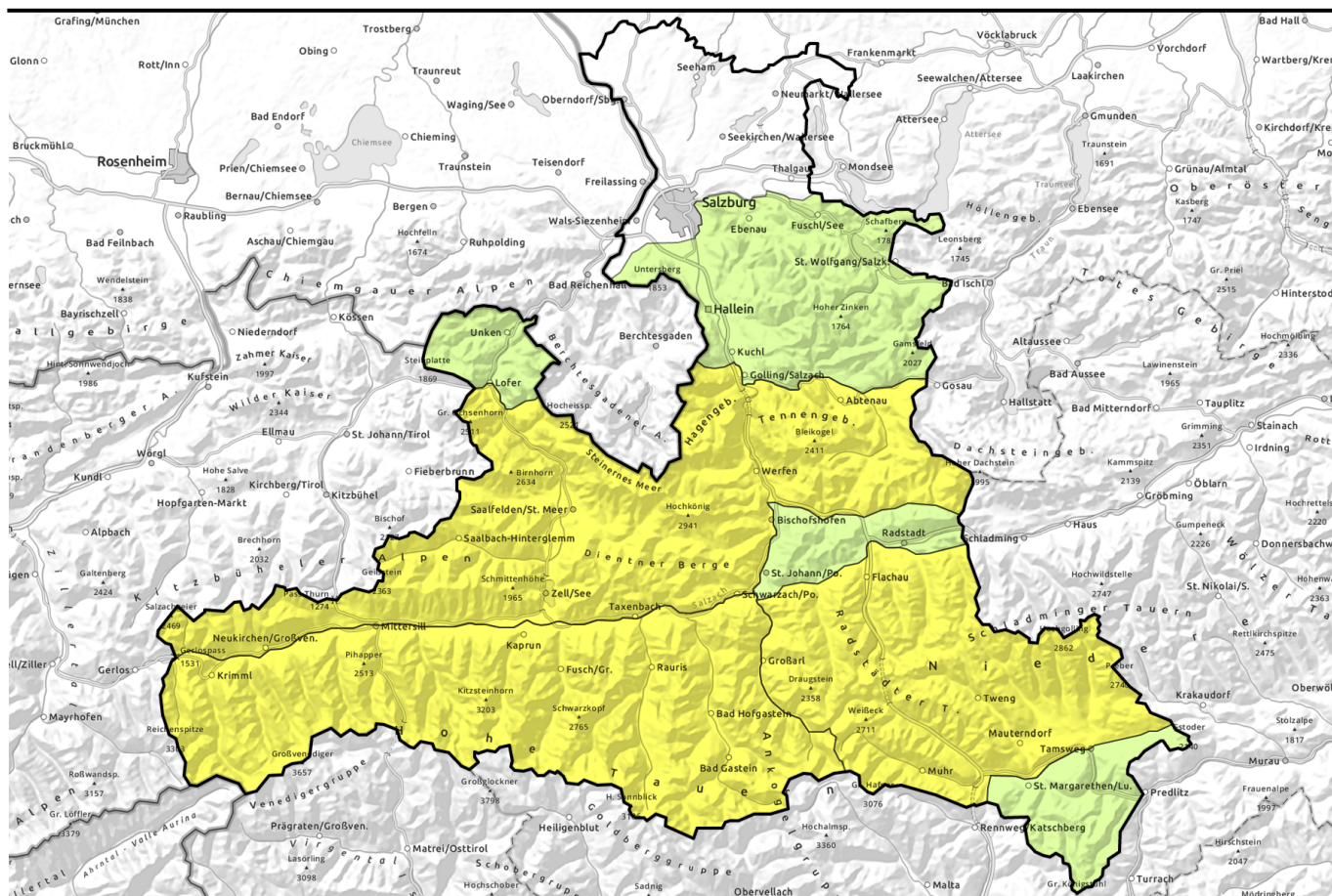





Avalanche report for Saturday, 25.03.2023





Wet-snow and glide-snow avalanches continue

- 


Großenedigergruppe Nord, Großenedigergruppe Alpenhauptkamm, Glocknergruppe Alpenhauptkamm, Glocknergruppe Nord, Goldberggruppe Nord, Goldberggruppe Alpenhauptkamm


- 

Kitzbüheler Alpen, Glemmtal, Oberpinzgauer Grasberge, Dientner Grasberge, Niedere Tauern Nord, Tennengebirge, Gosaukamm, Niedere Tauern Alpenhauptkamm, Ankogelgruppe, Muhr, Niedere Tauern Süd, Steinernes Meer, Hochkönig, Hagengebirge, Göllstock, Loferer und Leoganger Steinberge


- 

Chiemgauer Alpen, Heutal, Reiteralpe, Osterhorngruppe, Gamsfeldgruppe, Untersbergstock, Nockberge, Pongauer Grasberge



Avalanche problems



Danger ratings

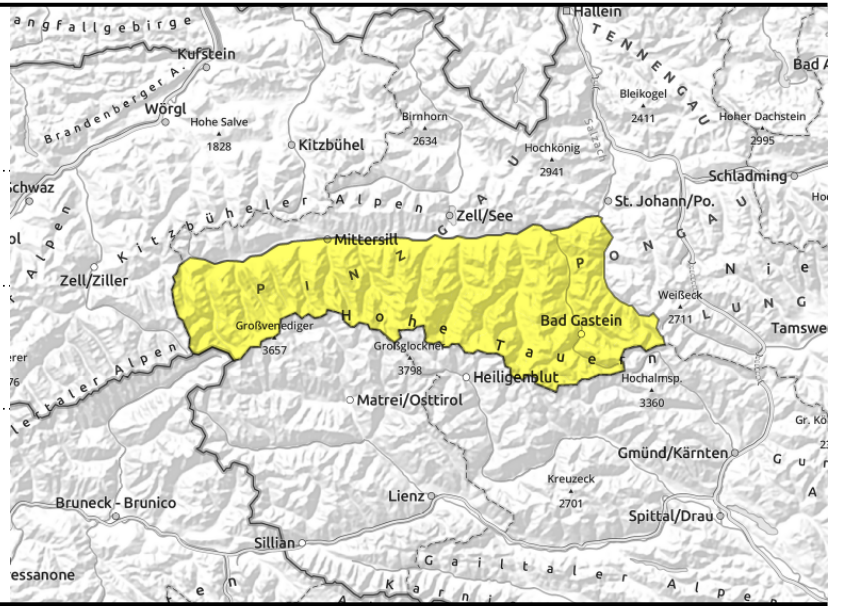


Expositions



Avalanche report for Saturday, 25.03.2023

Großvenedigergruppe Nord, Großvenedigergruppe Alpenhauptkamm, Glocknergruppe Alpenhauptkamm, Glocknergruppe Nord, Goldberggruppe Nord, Goldberggruppe Alpenhauptkamm



esp. in case of sunshine: wet + dry loose-snow avalanches



glide-snow avalanches can trigger at any time of day or night

Wet-snow and glide-snow avalanches

Avalanche danger is MODERATE.

On Friday night, lower temperatures will make small glide-snow avalanches possible on steep grass-covered slopes. Also small-to-medium wet-snow avalanches can be expected. Steep starting zones with lots of snow are unfavorable, the entire thoroughly wet snowpack can be swept away and avalanches grow to dangerously large size. Caution in zones with such risks. Zones below glide cracks should be circumvented.

At high and high alpine altitudes on extremely steep slopes in cases of sunshine, the fresh snow can trigger naturally during the night, turning a small avalanche into a large one.

Snowpack structure

The snowpack on E/S/W facing slopes is thoroughly wet and, depending on aspect, even wet down to the ground and zero-degree isotherm. Also on shady slopes the snowpack was moistened up to high altitudes on Monday due to warmth and diffuse radiation. In the mostly cloudy night the snowpack cannot radiate its warmth outwards. During the daytime it softens further and forfeits its firmness. Free water on grassy slope ground enhances the gliding of the snowpack. On shady slopes at high altitudes the upper part has isolated weak and trigger-sensitive layers; layers more deeply embedded inside the snowpack are currently unlikely to trigger. Below the treeline there is little snow on the ground, above the treeline the snow depths are below average.

Weather

On Saturday there will be April weather at the end of March: variable, some sunshine, convective clouds, a few raindrops and snow showers, good visibility at times. At 2000 m: -1 degree at midday; at 3000: -9 degrees. Strong W/NW winds, reaching 70 km/hr in the afternoon at high altitudes.

Outlook

On the weekend: wet-snow problem. Starting on Monday: wintery conditions for a brief spell.

Avalanche problems



Danger ratings

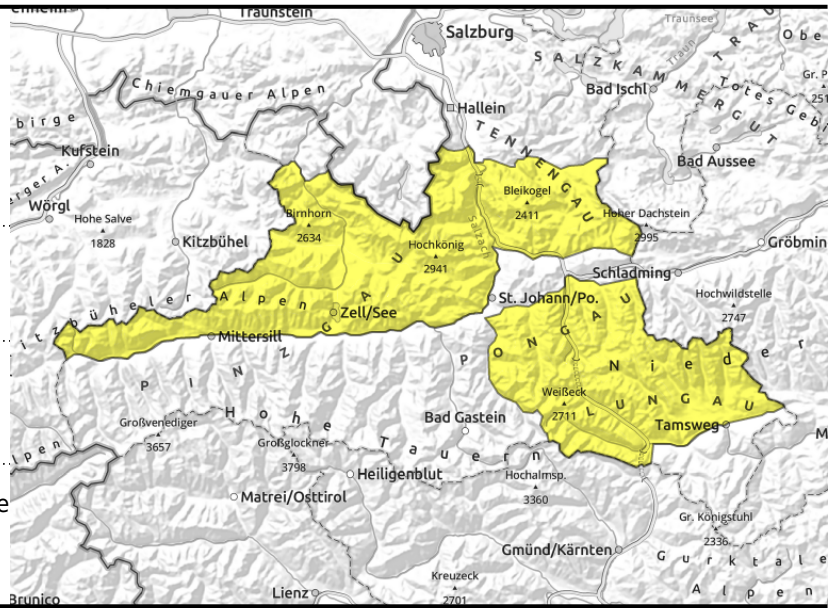


Expositions



Avalanche report for **Saturday, 25.03.2023**

Kitzbüheler Alpen, Glemmtal, Oberpinzgauer Grasberge, Dientner Grasberge, Niedere Tauern Nord, Tennengebirge, Gosaukamm, Niedere Tauern Alpenhauptkamm, Ankogelgruppe, Muhr, Niedere Tauern Süd, Steinernes Meer, Hochkönig, Hagengebirge, Göllstock, Loferer und Leoganger Steinberge



wet loose-snow avalanches esp. in case of sunshine



glide-snow avalanches continue

Wet-snow and glide-snow avalanches

Avalanche danger is MODERATE.

On Friday night, lower temperatures will make small glide-snow avalanches possible on steep grass-covered slopes. Also small-to-medium wet-snow avalanches can be expected. Steep starting zones with lots of snow are unfavorable, the entire thoroughly wet snowpack can be swept away and avalanches grow to dangerously large size. Caution in zones with such risks. Zones below glide cracks should be circumvented.

Snowpack structure

The snowpack on E/S/W facing slopes is thoroughly wet and, depending on aspect, even wet down to the ground and zero-degree isotherm. Also on shady slopes the snowpack was moistened up to high altitudes on Monday due to warmth and diffuse radiation. In the mostly cloudy night the snowpack cannot radiate its warmth outwards. During the daytime it softens further and forfeits its firmness. Free water on grassy slope ground enhances the gliding of the snowpack. On shady slopes at high altitudes the upper part has isolated weak and trigger-sensitive layers; layers more deeply embedded inside the snowpack are currently unlikely to trigger. Below the treeline there is little snow on the ground, above the treeline the snow depths are below average.

Weather

On Saturday there will be April weather at the end of March: variable, some sunshine, convective clouds, a few raindrops and snow showers, good visibility at times. At 2000 m: -1 degree at midday; at 3000: -9 degrees. Strong W/NW winds, reaching 70 km/hr in the afternoon at high altitudes.

Outlook

On the weekend: wet-snow problem. Starting on Monday: wintery conditions for a brief spell.

Avalanche problems



Danger ratings



Expositions

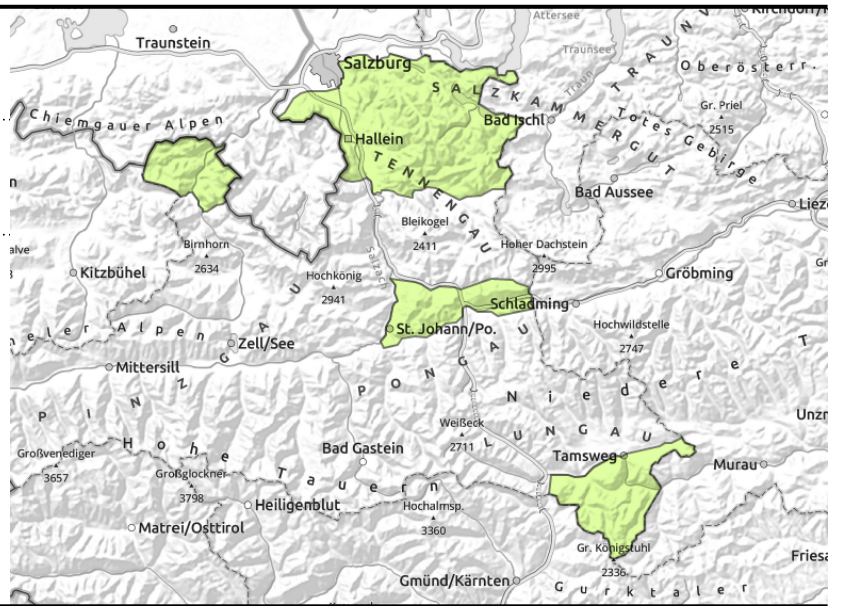


Avalanche report for **Saturday, 25.03.2023**

Chiemgauer Alpen, Heutal, Reiteralpe, Osterhorngruppe, Gamsfeldgruppe, Untersbergstock, Nockberge, Pongauer Grasberge



small wet loose-snow avalanches



Small wet avalanches where snow is sufficient

Avalanche danger is LOW. On extremely steep (>35°) sunny slopes, isolated small wet loose-snow avalanches are possible. In addition, on steep grassy slopes isolated naturally triggered glide-snow avalanches are possible.

Snowpack structure

The snowpack is moist in all aspects, thoroughly wet down to the ground on sunny slopes. On Tuesday night, skies will be heavily overcast, no outgoing radiation will be possible. Solar radiation and daytime temperatures will further weaken the snowpack. Below the treeline there is little snow on the ground.

Weather

On Saturday there will be April weather at the end of March: variable, some sunshine, convective clouds, a few raindrops and snow showers, good visibility at times. At 2000 m: -1 degree at midday; at 3000: -9 degrees. Strong W/NW winds, reaching 70 km/hr in the afternoon at high altitudes.

Outlook

On the weekend: wet-snow problem. Starting on Monday: wintery conditions for a brief spell.

Translated by Jeffrey McCabe, www.creativtrans.com

Avalanche problems



Danger ratings



Expositions

