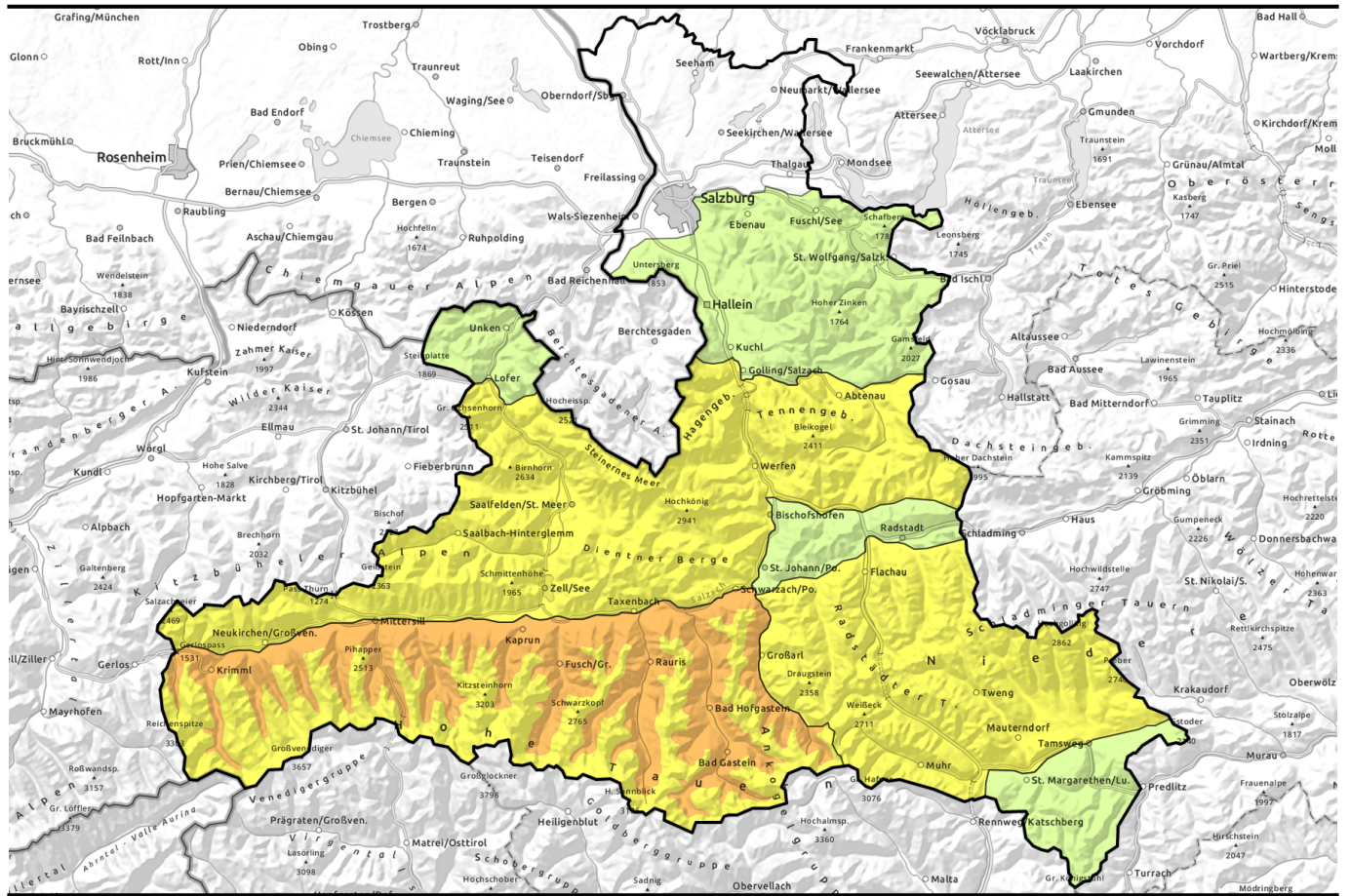


Avalanche report for Friday, 24.03.2023



Main danger: wet-snow and glide-snow avalanches

	<p>2600 m Großvenedigergruppe Nord, Großvenedigergruppe Alpenhauptkamm, Glocknergruppe Alpenhauptkamm, Glocknergruppe Nord, Goldberggruppe Nord, Goldberggruppe Alpenhauptkamm</p>	
	<p>Kitzbüheler Alpen, Glemmtal, Oberpinzgauer Grasberge, Dientner Grasberge, Niedere Tauern Nord, Tennengebirge, Gosaukamm, Niedere Tauern Alpenhauptkamm, Ankogelgruppe, Muhr, Niedere Tauern Süd, Steinernes Meer, Hochkönig, Hagengebirge, Göllstock, Loferer und Leoganger Steinberge</p>	
	<p>Chiemgauer Alpen, Heutal, Reiteralpe, Osterhorngruppe, Gamsfeldgruppe, Untersbergstock, Nockberge, Pongauer Grasberge</p>	

Avalanche problems



Danger ratings

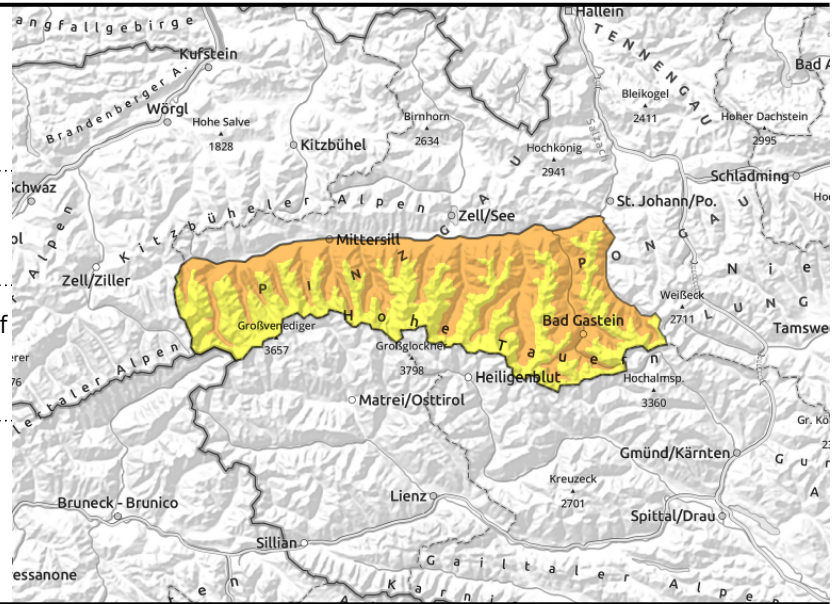


Expositions



Avalanche report for Friday, 24.03.2023

Großvenedigergruppe Nord, Großvenedigergruppe Alpenhauptkamm, Glocknergruppe Alpenhauptkamm, Glocknergruppe Nord, Goldberggruppe Nord, Goldberggruppe Alpenhauptkamm



caution esp. in run-out zones of large wet-snow avalanches, e.g. ascents to huts

circumvent zones below glide cracks

Naturally triggered avalanches esp. in the afternoon

Avalanche danger below 2600m is CONSIDERABLE already in the morning, below that altitude danger is MODERATE.

Following a night of cloudy skies the snowpack is quite weak already in early morning. Naturally triggered avalanches are then possible later in the morning, esp. on very steep (>35°) slopes in all aspects below 2600 m. During the course of the day, likelihood of triggering increases. Particularly on shady slopes below 2400 m, naturally triggered avalanches can be expected in the afternoon due to rainfall water seepage. Avalanches can sweep along the entire wet snowpack in their plummet path and grow to large size. Caution urged where such risks prevail. Avoid zones below glide cracks.

Snowpack structure

The snowpack on E/S/W facing slopes is thoroughly wet and, depending on aspect, even wet down to the ground and zero-degree isotherm. Also on shady slopes the snowpack was moistened up to high altitudes on Monday due to warmth and diffuse radiation. In the mostly cloudy night the snowpack cannot radiate its warmth outwards. During the daytime it softens further and forfeits its firmness. Free water on grassy slope ground enhances the gliding of the snowpack. On shady slopes at high altitudes the upper part has isolated weak and trigger-sensitive layers; layers more deeply embedded inside the snowpack are currently unlikely to trigger. Below the treeline there is little snow on the ground, above the treeline the snow depths are below average.

Weather

Early Friday morning a small chance of sunshine, but dense clouds will soon move in. As of midday, NW clouds will accumulate, the Northern Alps could have some rain showers or thunderstorms (hefty). In the Tauern and Nockberge it is expected to remain dry for longer, but rainfall will arrive in the afternoon in any case, snowfall level at 2400 m, descending later in the day. The NW winds will be moderate in the Northern Alps, later intensifying. At 2000 m, 4-7 degrees; at 3000 m: -1 degree.

Outlook

Gradually descending temperatures on Friday night. Danger of wet-snow avalanches will recede.

Avalanche problems



Danger ratings

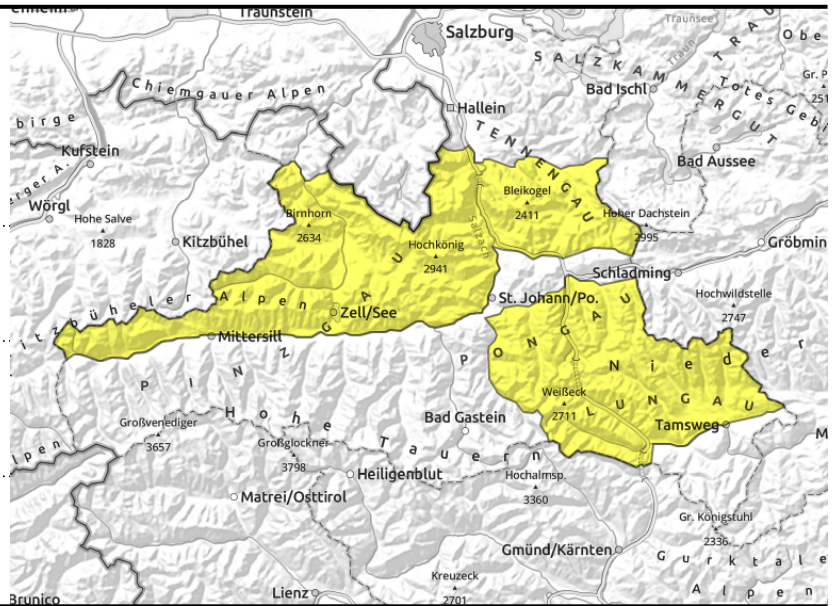


Expositions



Avalanche report for Friday, 24.03.2023

Kitzbüheler Alpen, Glemmtal, Oberpinzgauer Grasberge, Dientner Grasberge, Niedere Tauern Nord, Tennengebirge, Gosaukamm, Niedere Tauern Alpenhauptkamm, Ankogelgruppe, Muhr, Niedere Tauern Süd, Steinernes Meer, Hochkönig, Hagengebirge, Göllstock, Loferer und Leoganger Steinberge



the warmer and weaker the snowpack, the more likely are wet loose-snow avalanches



circumvent zones below glide cracks

Heightened danger of wet-snow avalanche activity in afternoon

Avalanche danger is MODERATE.

Following a night of cloudy skies the snowpack is quite weak already in early morning. Naturally triggered avalanches are then possible later in the morning, esp. on very steep (>35°) slopes in all aspects below 2600 m. During the course of the day, likelihood of triggering increases. Particularly on shady slopes below 2400 m, naturally triggered avalanches can be expected in the afternoon due to rainfall water seepage. Avalanches can sweep along the entire wet snowpack in their plummet path and grow to large size. Caution urged where such risks prevail. Avoid zones below glide cracks.

Snowpack structure

The snowpack on E/S/W facing slopes is thoroughly wet and, depending on aspect, even wet down to the ground and zero-degree isotherm. Also on shady slopes the snowpack was moistened up to high altitudes on Monday due to warmth and diffuse radiation. In the mostly cloudy night the snowpack cannot radiate its warmth outwards. During the daytime it softens further and forfeits its firmness. Free water on grassy slope ground enhances the gliding of the snowpack. On shady slopes at high altitudes the upper part has isolated weak and trigger-sensitive layers; layers more deeply embedded inside the snowpack are currently unlikely to trigger. Below the treeline there is little snow on the ground, above the treeline the snow depths are below average.

Weather

Early Friday morning a small chance of sunshine, but dense clouds will soon move in. As of midday, NW clouds will accumulate, the Northern Alps could have some rain showers or thunderstorms (hefty). In the Tauern and Nockberge it is expected to remain dry for longer, but rainfall will arrive in the afternoon in any case, snowfall level at 2400 m, descending later in the day. The NW winds will be moderate in the Northern Alps, later intensifying. At 2000 m, 4-7 degrees; at 3000 m: -1 degree.

Outlook

Gradually descending temperatures on Friday night. Danger of wet-snow avalanches will recede.

Avalanche problems



Danger ratings



Expositions

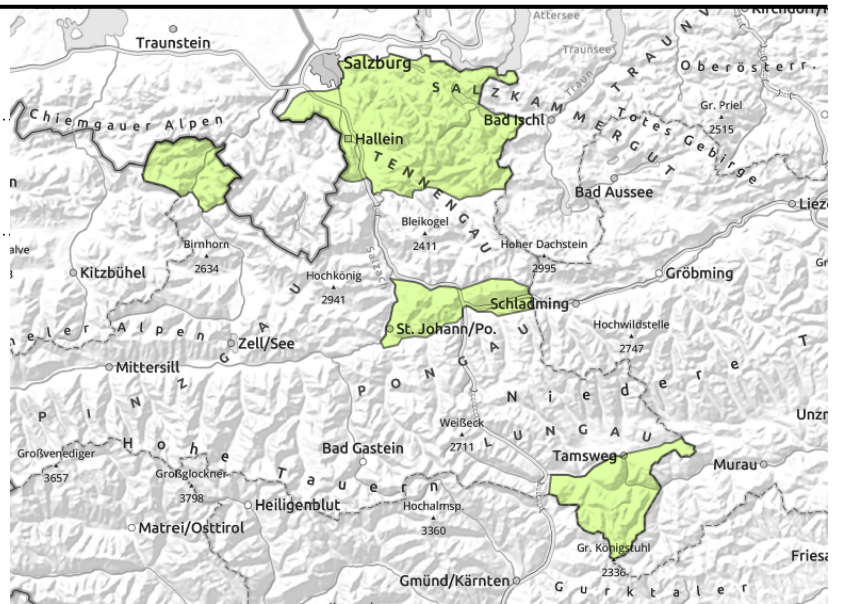


Avalanche report for Friday, 24.03.2023

Chiemgauer Alpen, Heutal, Reiteralpe, Osterhorngruppe, Gamsfeldgruppe, Untersbergstock, Nockberge, Pongauer Grasberge



the warmer and weaker the snowpack, the more likely are wet loose-snow avalanches



Rising danger of wet-snow avalanches inside this danger level

Avalanche danger is LOW. Due to solar radiation and higher temperatures, danger of wet-snow avalanches rises somewhat during the daytime. On extremely steep (>40°) sunny slopes, isolated small wet loose-snow avalanches are possible. In addition, on steep grassy slopes isolated naturally triggered glide-snow avalanches are possible.

Snowpack structure

The snowpack is moist in all aspects, thoroughly wet down to the ground on sunny slopes. On Tuesday night, skies will be heavily overcast, no outgoing radiation will be possible. Solar radiation and daytime temperatures will further weaken the snowpack. Below the treeline there is little snow on the ground.

Weather

Early Friday morning a small chance of sunshine, but dense clouds will soon move in. As of midday, NW clouds will accumulate, the Northern Alps could have some rain showers or thunderstorms (hefty). In the Tauern and Nockberge it is expected to remain dry for longer, but rainfall will arrive in the afternoon in any case, snowfall level at 2400 m, descending later in the day. The NW winds will be moderate in the Northern Alps, later intensifying. At 2000 m, 4-7 degrees; at 3000 m: -1 degree.

Outlook

Gradually descending temperatures on Friday night. Danger of wet-snow avalanches will recede.

Translated by Jeffrey McCabe, www.creativtrans.com

Avalanche problems



Danger ratings



Expositions

