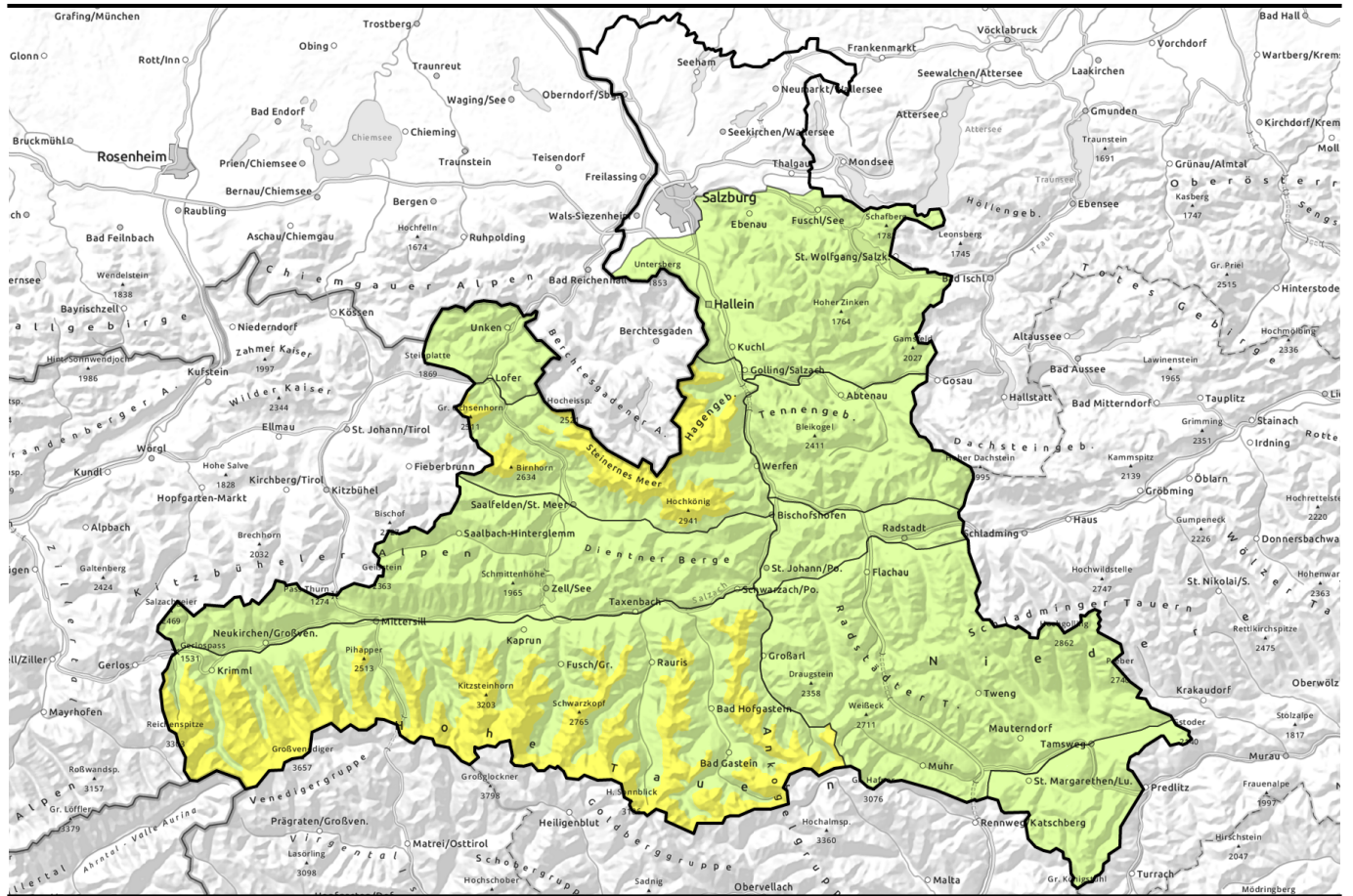





Avalanche report for Tuesday, 21.03.2023, morning





Persistent weak layer at high altitudes. Wet-snow avalanches during the day.

-  2200 m


Großvenedigergruppe Nord, Großvenedigergruppe Alpenhauptkamm, Glocknergruppe Alpenhauptkamm, Glocknergruppe Nord, Goldberggruppe Nord, Loferer und Leoganger Steinberge, Steinernes Meer, Hochkönig, Hagengebirge, Göllstock, Goldberggruppe Alpenhauptkamm


- 

Kitzbüheler Alpen, Glemmtal, Oberpinzgauer Grasberge, Dientner Grasberge, Niedere Tauern Süd, Niedere Tauern Alpenhauptkamm, Niedere Tauern Nord, Ankogelgruppe, Muhr, Tennengebirge, Gosaukamm


- 

Chiemgauer Alpen, Heutal, Reiteralpe, Osterhorngruppe, Gamsfeldgruppe, Untersbergstock, Nockberge, Pongauer Grasberge



Avalanche problems



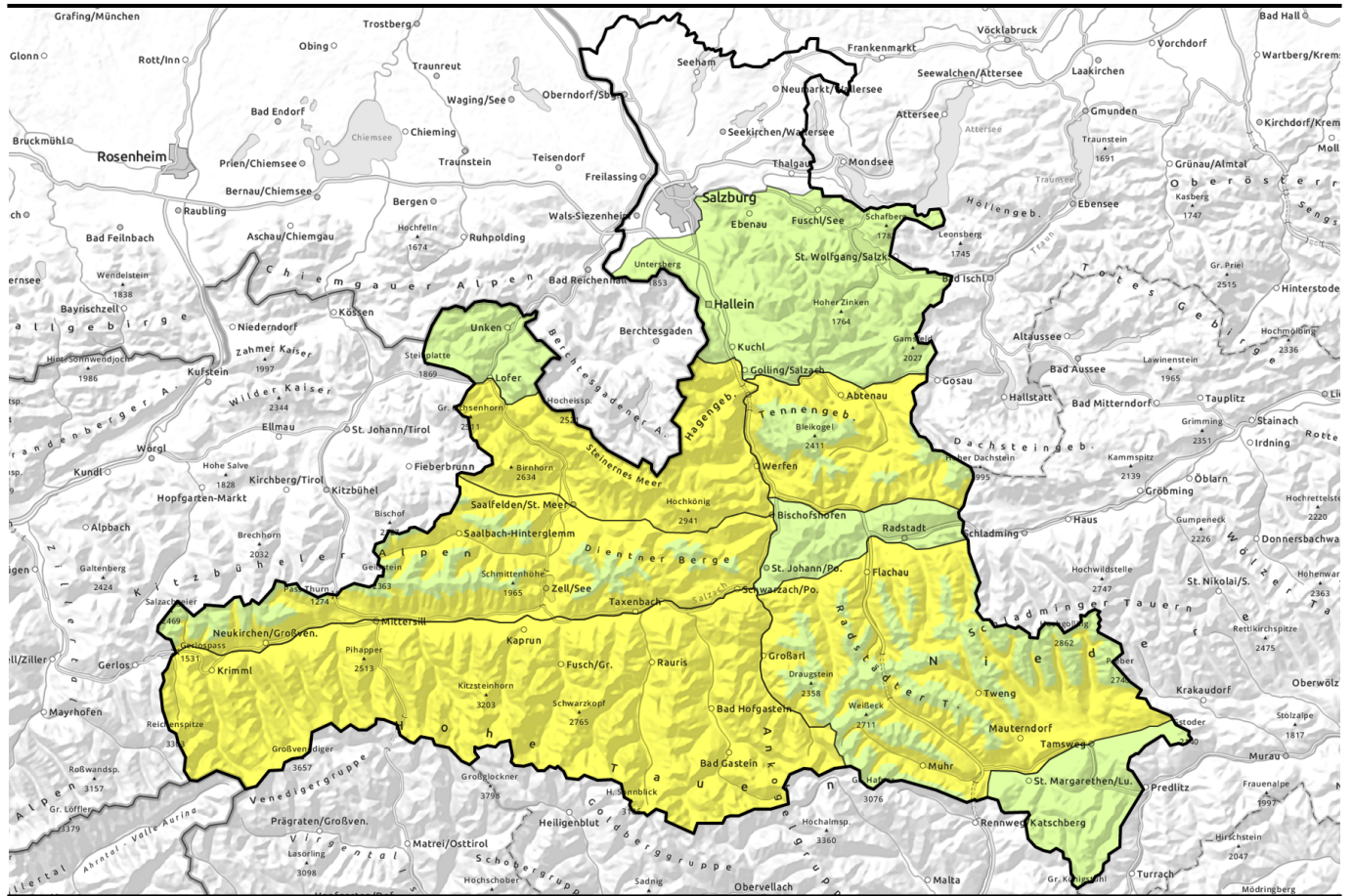
Danger ratings



Expositions



Avalanche report for Tuesday, 21.03.2023, afternoon



Altschneeproblem im Hochgebirge, Nassschneelawinen im Tagesverlauf

	<p>Großvenedigergruppe Nord, Großvenedigergruppe Alpenhauptkamm, Glocknergruppe Alpenhauptkamm, Glocknergruppe Nord, Goldberggruppe Nord, Loferer und Leoganger Steinberge, Steinernes Meer, Hochkönig, Hagengebirge, Göllstock, Goldberggruppe Alpenhauptkamm</p>	
	<p>Kitzbüheler Alpen, Glemmtal, Oberpinzgauer Grasberge, Dientner Grasberge, Niedere Tauern Süd, Niedere Tauern Alpenhauptkamm, Niedere Tauern Nord, Ankogelgruppe, Muhr, Tennengebirge, Gosaukamm</p>	
<p>2400 m</p>		
	<p>Chiemgauer Alpen, Heutal, Reiteralpe, Osterhorngruppe, Gamsfeldgruppe, Untersbergstock, Nockberge, Pongauer Grasberge</p>	

Avalanche problems



Danger ratings

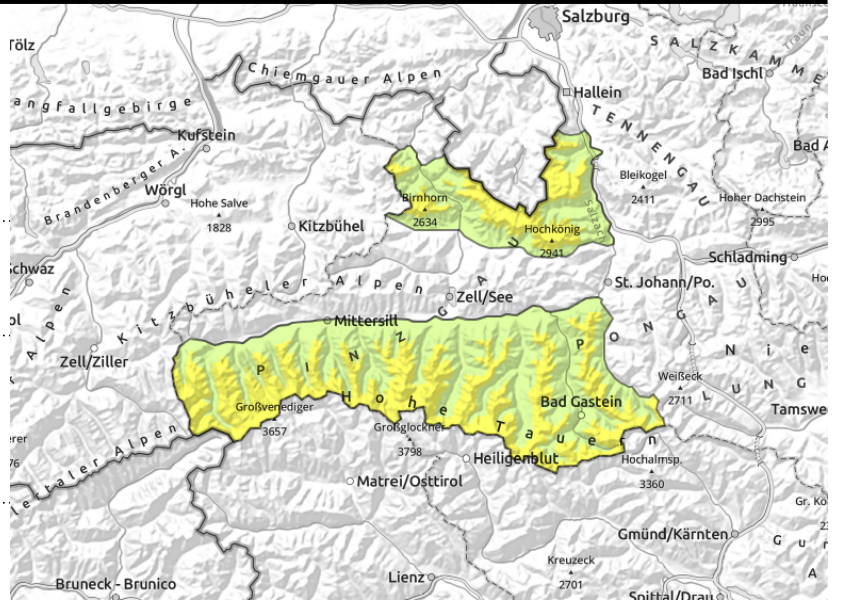


Expositions



Avalanche report for Tuesday, 21.03.2023, morning

Großvenedigergruppe Nord, Großvenedigergruppe Alpenhauptkamm, Glocknergruppe Alpenhauptkamm, Glocknergruppe Nord, Goldberggruppe Nord, Loferer und Leoganger Steinberge, Steinernes Meer, Hochkönig, Hagengebirge, Göllstock, Goldberggruppe Alpenhauptkamm



Vorsicht an sehr steilen Hängen, besonders an Übergängen von wenig zu viel Schnee.



circumvent zones below glide cracks

Isolated danger zones in old snow, rising danger of wet-snow avalanches

Avalanche danger over 2200m is moderate, below that altitude danger is LOW. During the course of the day, danger at all altitudes rises to MODERATE.

Morning: Isolated danger zones for dry-snow slab avalanches occur on very steep (>35°) west, north and east-facing slopes, where avalanches can in isolated cases be triggered by minimum additional loading in the weak old snow and grow to medium size. Caution in wind-protected terrain and transitions from shallow to deep snow.

Afternoon: Due to direct and diffuse radiation and high temperatures, the danger of wet-snow avalanches increases during the course of the day below 2400m. Esp. on sunny slopes, small naturally triggered loose-snow and glide-snow avalanches can trigger in steep grassy terrain in the plummet paths of wet snowpack releases, in some cases growing to large size. Caution urged where such risks prevail! Circumvent zones below glide cracks.

Snowpack structure

Above 1800-2000 m there was a small amount of fresh snow registered on Sunday night, deposited on E/S/W facing slopes atop a thin melt-freeze crust. Beneath that the snowpack (depending on aspect) is moist-to-wet up to high altitudes. On shady slopes at high altitudes (>2000m) the snowpack is often dry, in its upper segment above 2200m there are weak trigger-sensitive layers (deeper down weak layers are unlikely to trigger currently). The snowpack on E/S/W facing slopes softens during the daytime, and weakens thereby. Diffuse radiation can moisten the snowpack also on shady slopes. Water seepage on the ground enhances gliding snow masses. Below the treeline there is little snow on the ground, above the treeline the snowpack is fragmented, snow depths highly varied.

Weather

On Tuesday, good visibility, sunshine, only a few harmless clouds. In the evening, cloud cover will move in from the west. Winds will be light to moderate fro W/NW. At 2000 m: 1-3 degrees in the afternoon; at 3000 m: -3 degrees.

Avalanche problems



Danger ratings



Expositions



Avalanche report for Tuesday, 21.03.2023, morning

Outlook

Wednesday: following a night of heavily overcast skies, a sunny day with mild temperatures. Wet-snow and glide-snow avalanches are possible as early as the morning hours.

Avalanche problems



Danger ratings

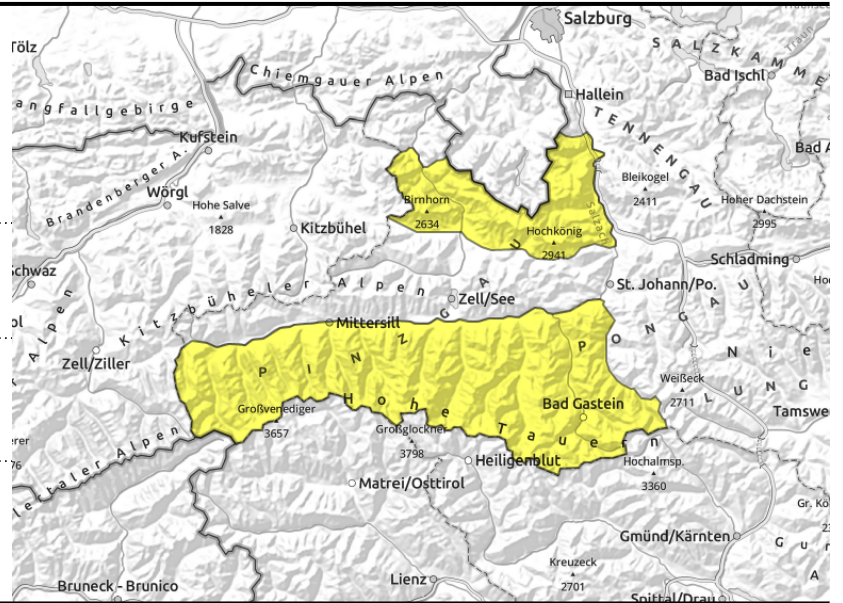


Expositions



Avalanche report for Tuesday, 21.03.2023, afternoon

Großvenedigergruppe Nord, Großvenedigergruppe Alpenhauptkamm, Glocknergruppe Alpenhauptkamm, Glocknergruppe Nord, Goldberggruppe Nord, Loferer und Leoganger Steinberge, Steinernes Meer, Hochkönig, Hagengebirge, Göllstock, Goldberggruppe Alpenhauptkamm



a soft and weak snowpack is a sign of increased danger



caution on very steep slopes, particularly in transitions from shallow to deep snow

Isolated danger zones in old snow, rising danger of wet-snow avalanches

Avalanche danger over 2200m is moderate, below that altitude danger is LOW. During the course of the day, danger at all altitudes rises to MODERATE.

Morning: Isolated danger zones for dry-snow slab avalanches occur on very steep ($>35^\circ$) west, north and east-facing slopes, where avalanches can in isolated cases be triggered by minimum additional loading in the weak old snow and grow to medium size. Caution in wind-protected terrain and transtions from shallow to deep snow.

Afternoon: Due to direct and diffuse radiation and high temperatures, the danger of wet-snow avalanches increases during the course of the day below 2400m. Esp. on sunny slopes, small naturally triggered loose-snow and glide-snow avalanches can trigger in steep grassy terrain in the plummet paths of wet snowpack releases, in some cases growing to large size. Caution urged where such risks prevail! Circumvent zones below glide cracks.

Snowpack structure

Above 1800-2000 m there was a small amount of fresh snow registered on Sunday night, deposited on E/S/W facing slopes atop a thin melt-freeze crust. Beneath that the snowpack (depending on aspect) is moist-to-wet up to high altitudes. On shady slopes at high altitudes ($>2000\text{m}$) the snowpack is often dry, in its upper segment above 2200m there are weak trigger-sensitive layers (deeper down weak layers are unlikely to trigger currently). The snowpack on E/S/W facing slopes softens during the daytime, and weakens thereby. Diffuse radiation can moisten the snowpack also on shady slopes. Water seepage on the ground enhances gliding snow masses. Below the treeline there is little snow on the ground, above the treeline the snowpack is fragmented, snow depths highly varied.

Weather

On Tuesday, good visibility, sunshine, only a few harmless clouds. In the evening, cloud cover will move in from the west. Winds will be light to moderate fro W/NW. At 2000 m: 1-3 degrees in the afternoon; at 3000 m: -3 degrees.

Outlook

Wednesday: following a night of heavily overcast skies, a sunny day with mild temperatures. Wet-

Avalanche problems



New snow



Wind drifted snow



Persistent weak layer



Wet snow



Gliding snow



Cornices



no distinct

Danger ratings



1

low



2

moderate



3

considerable



4

high



5

very high

Expositions



published at 20.03.2023, 18:00 h by *Matthias Walcher*

Avalanche report for **Tuesday, 21.03.2023, afternoon**

snow and glide-snow avalanches are possible as early as the morning hours.

Avalanche problems



Danger ratings

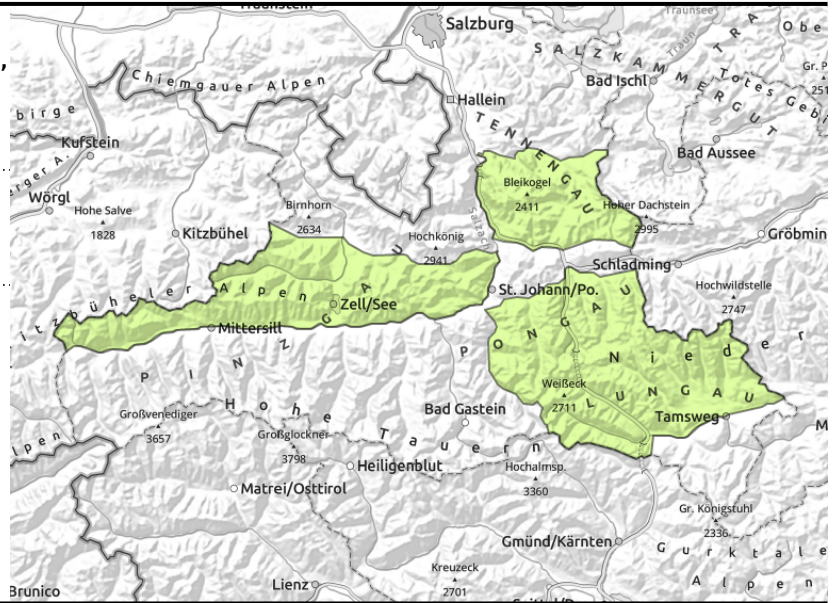


Expositions



Avalanche report for Tuesday, 21.03.2023, morning

Kitzbüheler Alpen, Glemmtal, Oberpinzgauer Grasberge, Dientner Grasberge, Niedere Tauern Süd, Niedere Tauern Alpenhauptkamm, Niedere Tauern Nord, Ankogelgruppe, Muhr, Tennengebirge, Gosaukamm



circumvent zones below glide cracks

Daytime increase of avalanche danger

Avalanche danger is LOW and below 2400m rises to MODERATE during the course of the day. Backcountry tours should be terminated early in the day.

Morning: Generally favourable situation. Danger zones for dry-snow avalanches are seldom. Isolated danger zones for dry-snow slab avalanches occur on very steep (>40°) slopes, where avalanches can in isolated cases be triggered by minimum additional loading in the weak old snow and grow to medium size. The plummeting masses can sweep unbonded snow along with them and the avalanches then grow to dangerously large size.

Afternoon: Due to direct and diffuse radiation and high temperatures, the danger of wet-snow avalanches increases during the course of the day below 2400m. Esp. on sunny slopes, small naturally triggered loose-snow and glide-snow avalanches can trigger in steep grassy terrain in the plummet paths of wet snowpack releases, in some cases growing to large size.

Snowpack structure

Above 1800-2000 m there was a small amount of fresh snow registered on Sunday night, deposited on E/S/W facing slopes atop a thin melt-freeze crust. Beneath that the snowpack (depending on aspect) is moist-to-wet up to high altitudes. On shady slopes at high altitudes (>2000m) the snowpack is often dry, in its upper segment above 2200m there are weak trigger-sensitive layers (deeper down weak layers are unlikely to trigger currently). The snowpack on E/S/W facing slopes softens during the daytime, and weakens thereby. Diffuse radiation can moisten the snowpack also on shady slopes. Water seepage on the ground enhances gliding snow masses. Below the treeline there is little snow on the ground, above the treeline the snowpack is fragmented, snow depths highly varied.

Weather

On Tuesday, good visibility, sunshine, only a few harmless clouds. In the evening, cloud cover will move in from the west. Winds will be light to moderate fro W/NW. At 2000 m: 1-3 degrees in the afternoon; at 3000 m: -3 degrees.

Outlook

Wednesday: following a night of heavily overcast skies, a sunny day with mild temperatures. Wet-

Avalanche problems



Danger ratings



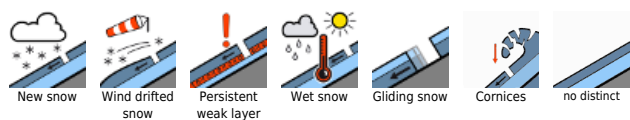
Expositions



Avalanche report for **Tuesday, 21.03.2023, morning**

snow and glide-snow avalanches are possible as early as the morning hours.

Avalanche problems



Danger ratings

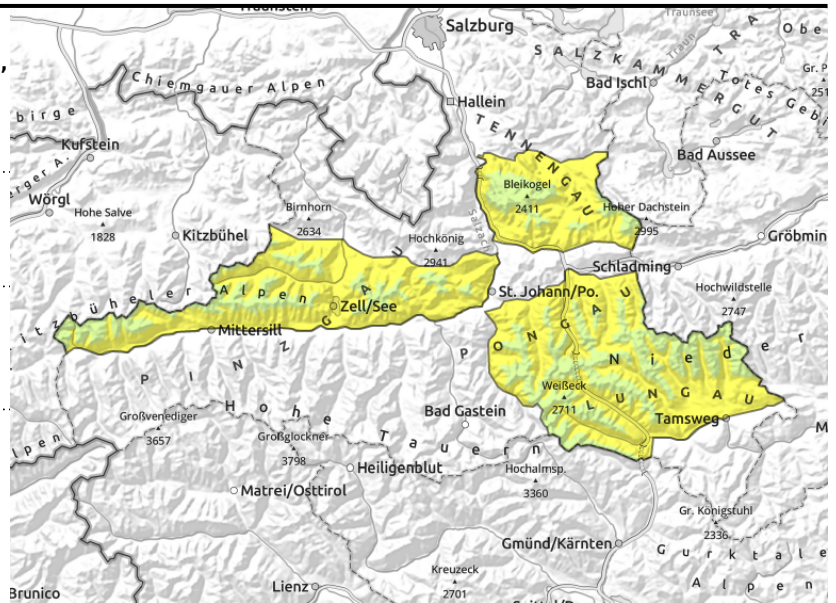
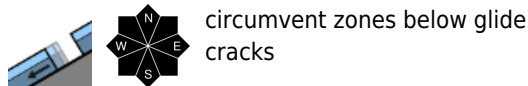
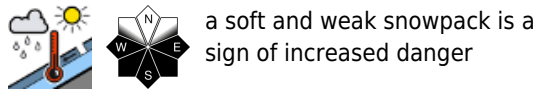


Expositions



Avalanche report for Tuesday, 21.03.2023, afternoon

Kitzbüheler Alpen, Glemmtal, Oberpinzgauer Grasberge, Dientner Grasberge, Niedere Tauern Süd, Niedere Tauern Alpenhauptkamm, Niedere Tauern Nord, Ankogelgruppe, Muhr, Tennengebirge, Gosaukamm



Daytime increase of avalanche danger

Avalanche danger is LOW and below 2400m rises to MODERATE during the course of the day. Backcountry tours should be terminated early in the day.

Morning: Generally favourable situation. Danger zones for dry-snow avalanches are seldom. Isolated danger zones for dry-snow slab avalanches occur on very steep (>40°) slopes, where avalanches can in isolated cases be triggered by minimum additional loading in the weak old snow and grow to medium size. The plummeting masses can sweep unbonded snow along with them and the avalanches then grow to dangerously large size.

Afternoon: Due to direct and diffuse radiation and high temperatures, the danger of wet-snow avalanches increases during the course of the day below 2400m. Esp. on sunny slopes, small naturally triggered loose-snow and glide-snow avalanches can trigger in steep grassy terrain in the plummet paths of wet snowpack releases, in some cases growing to large size.

Snowpack structure

Above 1800-2000 m there was a small amount of fresh snow registered on Sunday night, deposited on E/S/W facing slopes atop a thin melt-freeze crust. Beneath that the snowpack (depending on aspect) is moist-to-wet up to high altitudes. On shady slopes at high altitudes (>2000m) the snowpack is often dry, in its upper segment above 2200m there are weak trigger-sensitive layers (deeper down weak layers are unlikely to trigger currently). The snowpack on E/S/W facing slopes softens during the daytime, and weakens thereby. Diffuse radiation can moisten the snowpack also on shady slopes. Water seepage on the ground enhances gliding snow masses. Below the treeline there is little snow on the ground, above the treeline the snowpack is fragmented, snow depths highly varied.

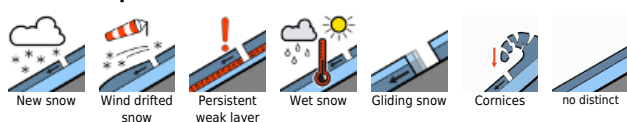
Weather

On Tuesday, good visibility, sunshine, only a few harmless clouds. In the evening, cloud cover will move in from the west. Winds will be light to moderate fro W/NW. At 2000 m: 1-3 degrees in the afternoon; at 3000 m: -3 degrees.

Outlook

Wednesday: following a night of heavily overcast skies, a sunny day with mild temperatures. Wet-

Avalanche problems



Danger ratings



Expositions



published at 20.03.2023, 18:00 h by *Matthias Walcher*

Avalanche report for **Tuesday, 21.03.2023, afternoon**

snow and glide-snow avalanches are possible as early as the morning hours.

Avalanche problems



Danger ratings



Expositions

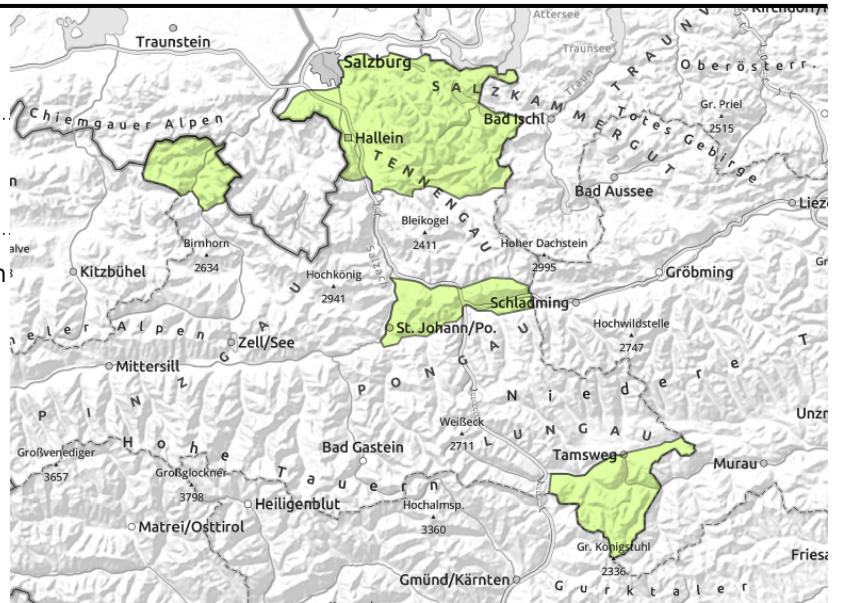


Avalanche report for Tuesday, 21.03.2023

Chiemgauer Alpen, Heutal, Reiteralpe, Osterhorngruppe, Gamsfeldgruppe, Untersbergstock, Nockberge, Pongauer Grasberge



a soft and weak snowpack is an indicator of increased danger for wet loose-snow avalanches



Slight rise in danger of wet-snow avalanches

Avalanche danger is LOW. Due to solar radiation and higher temperatures, danger of wet-snow avalanches rises somewhat during the daytime. On extremely steep (>40°) sunny slopes, isolated small wet loose-snow avalanches are possible. In addition, on steep grassy slopes isolated naturally triggered glide-snow avalanches are possible.

Snowpack structure

On Sunday night there was light rainfall up to summit level. The snowpack is moist in all aspects, on sunny slopes it is wet down to the ground. During the night, skies will be cloudy, so the snowpack will have only limited outgoing radiation. Solar radiation and higher temperatures will then weaken the snowpack further. Below the treeline there is little snow on the ground.

Weather

On Tuesday, good visibility, sunshine, only a few harmless clouds. In the evening, cloud cover will move in from the west. Winds will be light to moderate from W/NW. At 2000 m: 1-3 degrees in the afternoon; at 3000 m: -3 degrees.

Outlook

Wednesday: following a night of heavily overcast skies, a sunny day with mild temperatures. Wet-snow and glide-snow avalanches are possible as early as the morning hours.

Translated by Jeffrey McCabe, www.creativtrans.com

Avalanche problems



Danger ratings



Expositions

