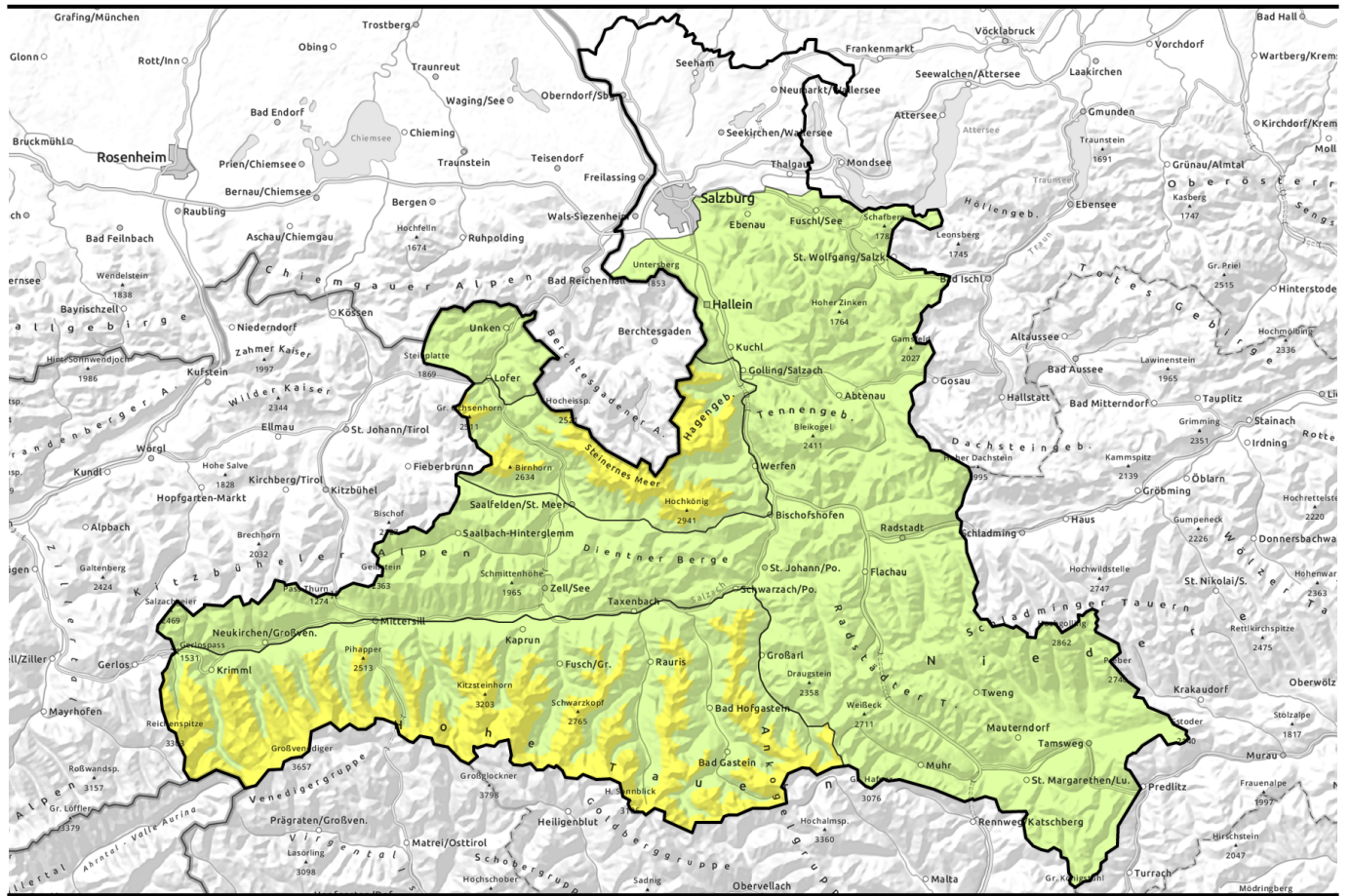


Avalanche report for Monday, 20.03.2023

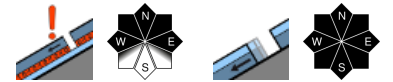


Persistent weak layer at some places at high altitudes

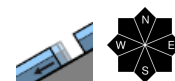


2200 m

Großenedigergruppe Nord, Großenedigergruppe Alpenhauptkamm, Glocknergruppe Alpenhauptkamm, Glocknergruppe Nord, Goldberggruppe Nord, Loferer und Leoganger Steinberge, Steinernes Meer, Hochkönig, Hagengebirge, Göllstock, Goldberggruppe Alpenhauptkamm



Kitzbüheler Alpen, Glemmtal, Oberpinzgauer Grasberge, Dientner Grasberge, Pongauer Grasberge, Osterhorngruppe, Gamsfeldgruppe, Untersbergstock, Chiemgauer Alpen, Heutal, Reiteralpe, Nockberge, Niedere Tauern Süd, Niedere Tauern Alpenhauptkamm, Niedere Tauern Nord, Ankogelgruppe, Muhr, Tennengebirge, Gosaukamm



Avalanche problems



Danger ratings

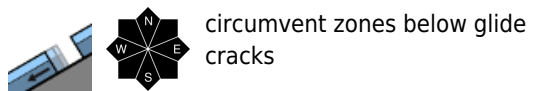
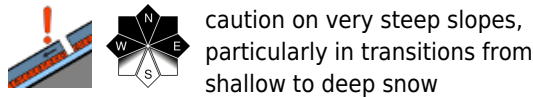
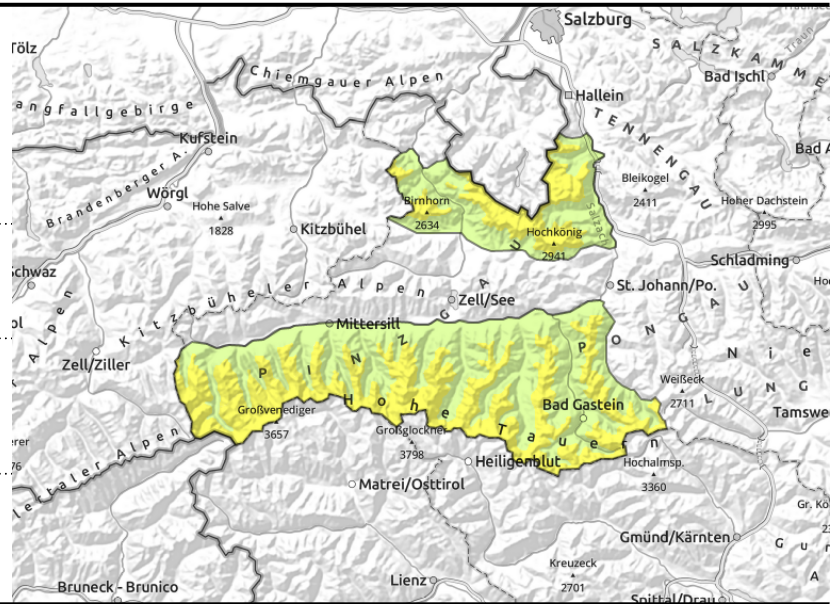


Expositions



Avalanche report for Monday, 20.03.2023

Großvenedigergruppe Nord, Großvenedigergruppe Alpenhauptkamm, Glocknergruppe Alpenhauptkamm, Glocknergruppe Nord, Goldberggruppe Nord, Loferer und Leoganger Steinberge, Steinernes Meer, Hochkönig, Hagengebirge, Göllstock, Goldberggruppe Alpenhauptkamm



Isolated danger zones in old snow

Avalanche danger over 2200m is moderate, below that altitude danger is LOW.

Isolated danger zones for dry-snow slab avalanches occur on very steep (>35°) west, north and east-facing slopes, where avalanches can in isolated cases be triggered by minimum additional loading in the weak old snow and grow to medium size. Caution in wind-protected terrain and transitions from shallow to deep snow.

On steep grassy slopes or smooth rock plates isolated naturally triggered glide-snow avalanches are possible. Also in case of solar radiation on extremely steep (>40°) sunny slopes at high altitudes on Monday morning, esp. where there has been fresh snow.

Snowpack structure

Beneath the fresh snow from last week on W/N/E facing slopes above 2200 m there is a weak layer of expansively metamorphosed (faceted) crystals. Weak layers deeper down inside the snowpack are unlikely to trigger. On sunny slopes the snowpack has become thoroughly wet over the last few days. Temperatures are dropping, which will stabilize the snowpack somewhat. By Monday midday, a few cm of fresh fallen snow is anticipated, in the Tauern area up to 10 cm. Solar radiation will lead to moistening of the snowpack surface on sunny slopes in the afternoon.

Weather

On Monday, reduced visibility. The snowfall level will lie at 1300m, in the afternoon the clouds will disperse somewhat. At high altitudes, moderate-to-brisk NW winds will come up. At 2000 m: -1 degree; at 3000 m: -6 degrees.

Outlook

On Tuesday, high-pressure front conditions, lots of sunshine, noticeably rising temperatures. Slight daytime cycle of danger of wet-snow avalanches.

Avalanche problems



Danger ratings

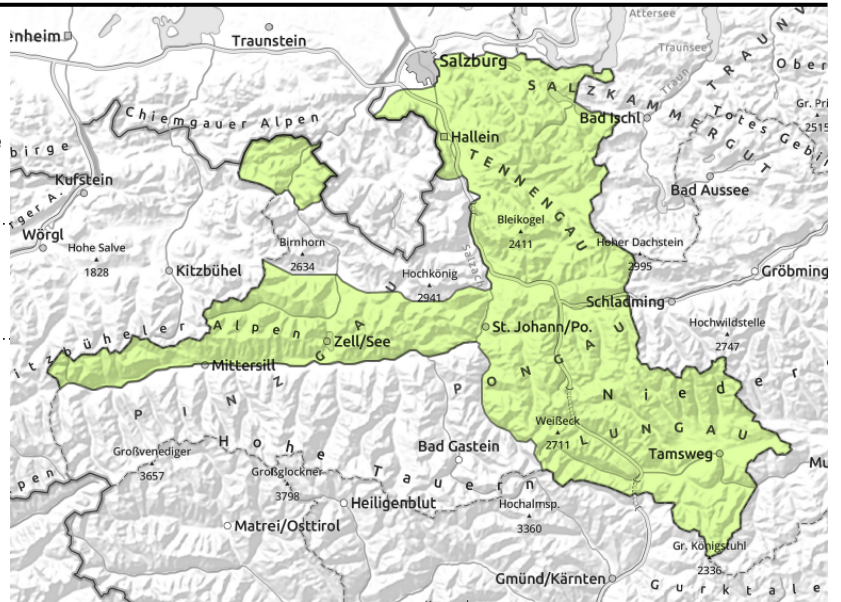


Expositions



Avalanche report for Monday, 20.03.2023

Kitzbüheler Alpen, Glemmtal, Oberpinzgauer Grasberge, Dientner Grasberge, Pongauer Grasberge, Osterhorngruppe, Gamsfeldgruppe, Untersbergstock, Chiemgauer Alpen, Heutal, Reiteralpe, Nockberge, Niedere Tauern Süd, Niedere Tauern Alpenhauptkamm, Niedere Tauern Nord, Ankogelgruppe, Muhr, Tennengebirge, Gosaukamm



circumvent zones below glide cracks

Low avalanche danger

Avalanche danger is LOW. Danger zones for dry-snow slab avalanches are rare, isolated danger zones occur on extremely steep (>40°) shady slopes.

With light rainfall isolated small wet loose-snow avalanches can trigger during the night on shady slopes at intermediate altitudes (<2000m), also on extremely steep sunny slopes (>40°) in case of solar radiation on Monday afternoon, esp. in regions where there has been snowfall. In addition, isolated glide-snow avalanches are possible in steep grassy terrain.

Snowpack structure

Temperatures are dropping, which will stabilize the snowpack somewhat. By Monday midday, a few cm of fresh fallen snow is anticipated, in the Tauern area up to 10 cm. Solar radiation will lead to moistening of the snowpack surface on sunny slopes in the afternoon.

Weather

On Monday, reduced visibility. The snowfall level will lie at 1300m, in the afternoon the clouds will disperse somewhat. At high altitudes, moderate-to-brisk NW winds will come up. At 2000 m: -1 degree; at 3000 m: -6 degrees.

Outlook

On Tuesday, high-pressure front conditions, lots of sunshine, noticeably rising temperatures. Slight daytime cycle of danger of wet-snow avalanches.

Translated by Jeffrey McCabe, www.creativtrans.com

Avalanche problems



Danger ratings



Expositions

