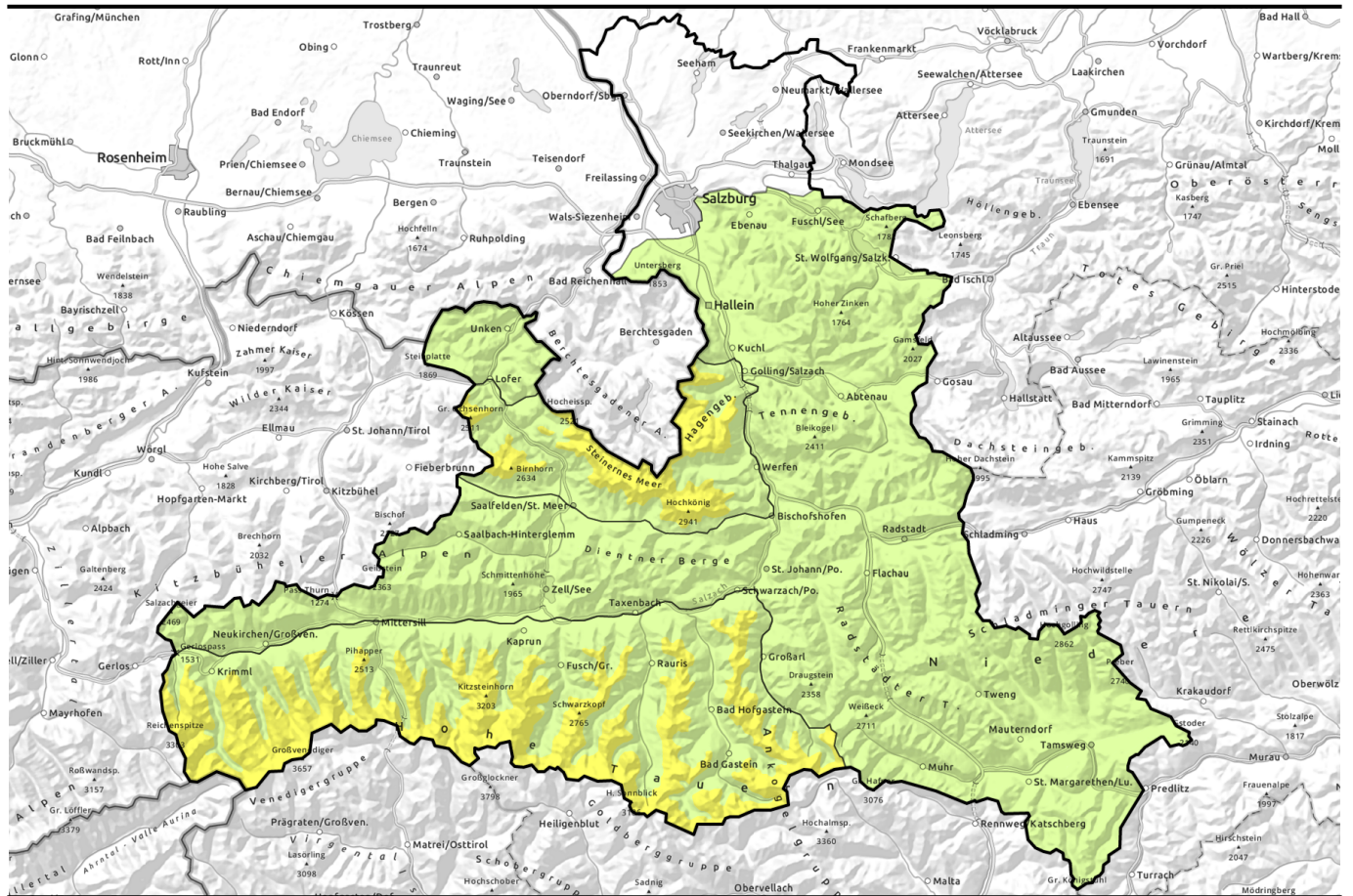


# Avalanche report for Sunday, 19.03.2023



## Persistent weak layer at high altitudes, isolated small wet-snow slides

**2**  
**1** 2200 m

Großenedigergruppe Nord, Großenedigergruppe Alpenhauptkamm, Glocknergruppe Alpenhauptkamm, Glocknergruppe Nord, Goldberggruppe Alpenhauptkamm, Goldberggruppe Nord, Loferer und Leoganger Steinberge, Steinernes Meer, Hochkönig, Hagengebirge, Göllstock

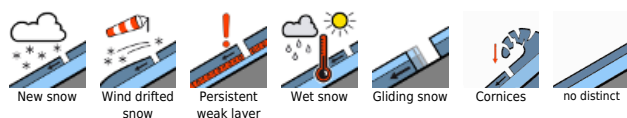


**1**

Kitzbüheler Alpen, Glemmtal, Oberpinzgauer Grasberge, Dientner Grasberge, Pongauer Grasberge, Osterhorngruppe, Gamsfeldgruppe, Untersbergstock, Chiemgauer Alpen, Heutal, Reiteralpe, Nockberge, Niedere Tauern Süd, Niedere Tauern Alpenhauptkamm, Niedere Tauern Nord, Ankogelgruppe, Muhr, Tennengebirge, Gosaukamm



### Avalanche problems



### Danger ratings



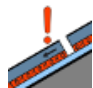

### Expositions





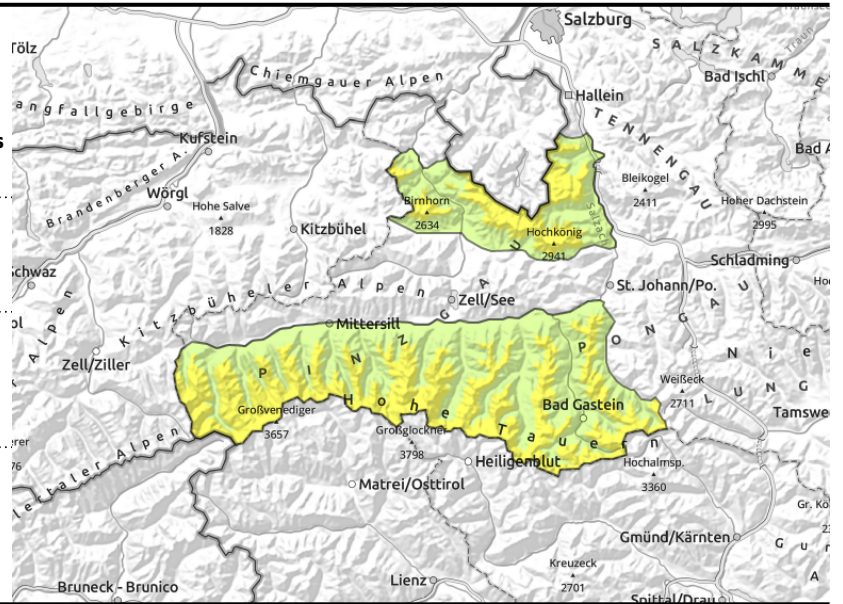
# Avalanche report for Sunday, 19.03.2023

**Großvenedigergruppe Nord, Großvenedigergruppe Alpenhauptkamm, Glocknergruppe Alpenhauptkamm, Glocknergruppe Nord, Goldberggruppe Alpenhauptkamm, Goldberggruppe Nord, Loferer und Leoganger Steinberge, Steinernes Meer, Hochkönig, Hagengebirge, Gölstock**



  caution on very steep slopes, particularly in transitions from shallow to deep snow

  the warmer and weaker the snowpack...the likelier are wet loose-snow avalanches



## Isolated danger zones, slight daytime rise in danger of wet-snow avalanches

Avalanche danger over 2200m is moderate, below that altitude danger is LOW.

Isolated danger zones for dry-snow slab avalanches occur on very steep (>35°) west, north and east-facing slopes above 2200m, where avalanches can in isolated cases be triggered by minimum additional loading in the weak old snow and grow to medium size. Caution in wind-protected terrain and transitions from shallow to deep snow.

Due to diffuse radiation and some rainfall in the afternoon, danger of wet-snow avalanches rises slightly during the day below 2400 m. On extremely steep (>40°) slopes isolated wet loose-snow avalanches are possible. In addition, on steep grassy slopes or smooth rock plates isolated naturally triggered glide-snow avalanches are possible.

### Snowpack structure

Intermittently clear nocturnal skies will form a thin melt-freeze crust which will soften during the daytime. The snowpack on steep sunny slopes is often thoroughly wet down to the ground. Due to diffuse radiation and some rainfall in the afternoon the snowpak below 2400 m will be weakened on Sunday, lose firmness; furthermore, water seepage on steep smooth slopes enhances gliding activity. Only in high alpine regions on shady slopes is the snowpack surface still dry, there the connection of older drifted masses to layers beneath them is often insufficient. In the lowermost part of the snowpack above 2200 m there are isolated facted layers which, however, are unlikely to trigger.

### Weather

On Sunday, sunshine initially, later on clouds will shroud the peaks in fog. In the afternoon, intermittent showers can be expected, the snowfall level will lie at 1800 m. W/NW winds will intensify during the day. At 2000 m: 2-4 degrees; at 3000 m: -4 degrees.

### Outlook

Temperatures will drop further, a bit of snowfall above 1800 m is possible. No significant change is expected.

#### Avalanche problems



#### Danger ratings

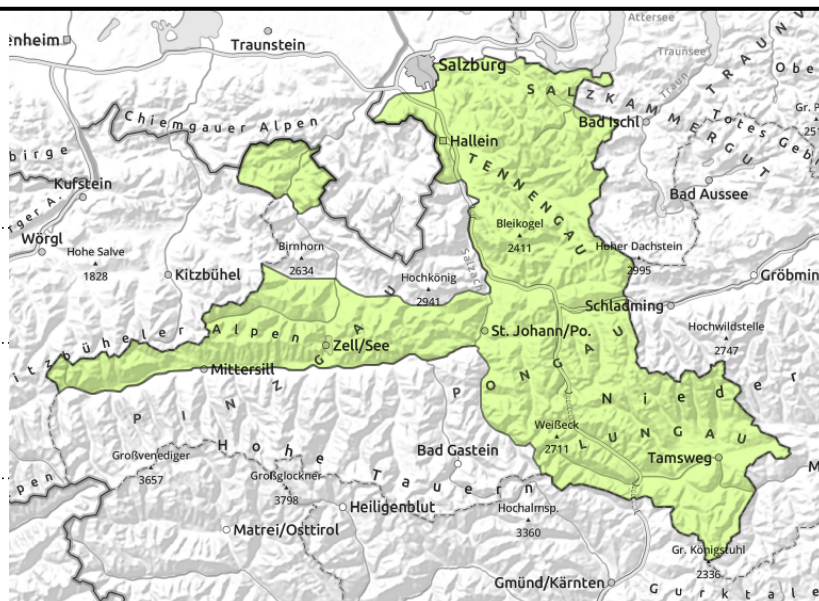


#### Expositions



# Avalanche report for Sunday, 19.03.2023

**Kitzbüheler Alpen, Glemmtal, Oberpinzgauer Grasberge, Dientner Grasberge, Pongauer Grasberge, Osterhorngruppe, Gamsfeldgruppe, Untersbergstock, Chiemgauer Alpen, Heutal, Reiteralpe, Nockberge, Niedere Tauern Süd, Niedere Tauern Alpenhauptkamm, Niedere Tauern Nord, Ankogelgruppe, Muhr, Tennengebirge, Gosaukamm**



the warmer and weaker the snowpack...the likelier are wet loose-snow avalanches



avoid zones below glide cracks

## Slight rise in danger of wet-snow avalanches during daytime hours

Avalanche danger is generally LOW. Danger zones for dry slab avalanches no longer exist. Due to daytime warming, danger of wet-snow avalanches rises somewhat below 2400 m. On extremely steep (>40°) slopes isolated wet loose-snow avalanches are possible. In addition, on steep grassy slopes or smooth rock plates isolated naturally triggered glide-snow avalanches are possible.

### Snowpack structure

Intermittently clear nocturnal skies will form a thin melt-freeze crust which will soften during the daytime. The snowpack on steep sunny slopes is often thoroughly wet down to the ground. Due to diffuse radiation and some rainfall in the afternoon the snowpak below 2400 m will be weakened on Sunday, lose firmness; furthermore, water seepage on steep smooth slopes enhances gliding activity. Only in high alpine regions on shady slopes is the snowpack surface still dry.

### Weather

On Sunday, sunshine initially, later on clouds will shroud the peaks in fog. In the afternoon, intermittent showers can be expected, the snowfall level will lie at 1800 m. W/NW winds will intensify during the day. At 2000 m: 2-4 degrees; at 3000 m: -4 degrees.

### Outlook

Temperatures will drop further, a bit of snowfall above 1800 m is possible. No significant change is expected.

Translated by Jeffrey McCabe, [www.creativtrans.com](http://www.creativtrans.com)

#### Avalanche problems



#### Danger ratings



#### Expositions

