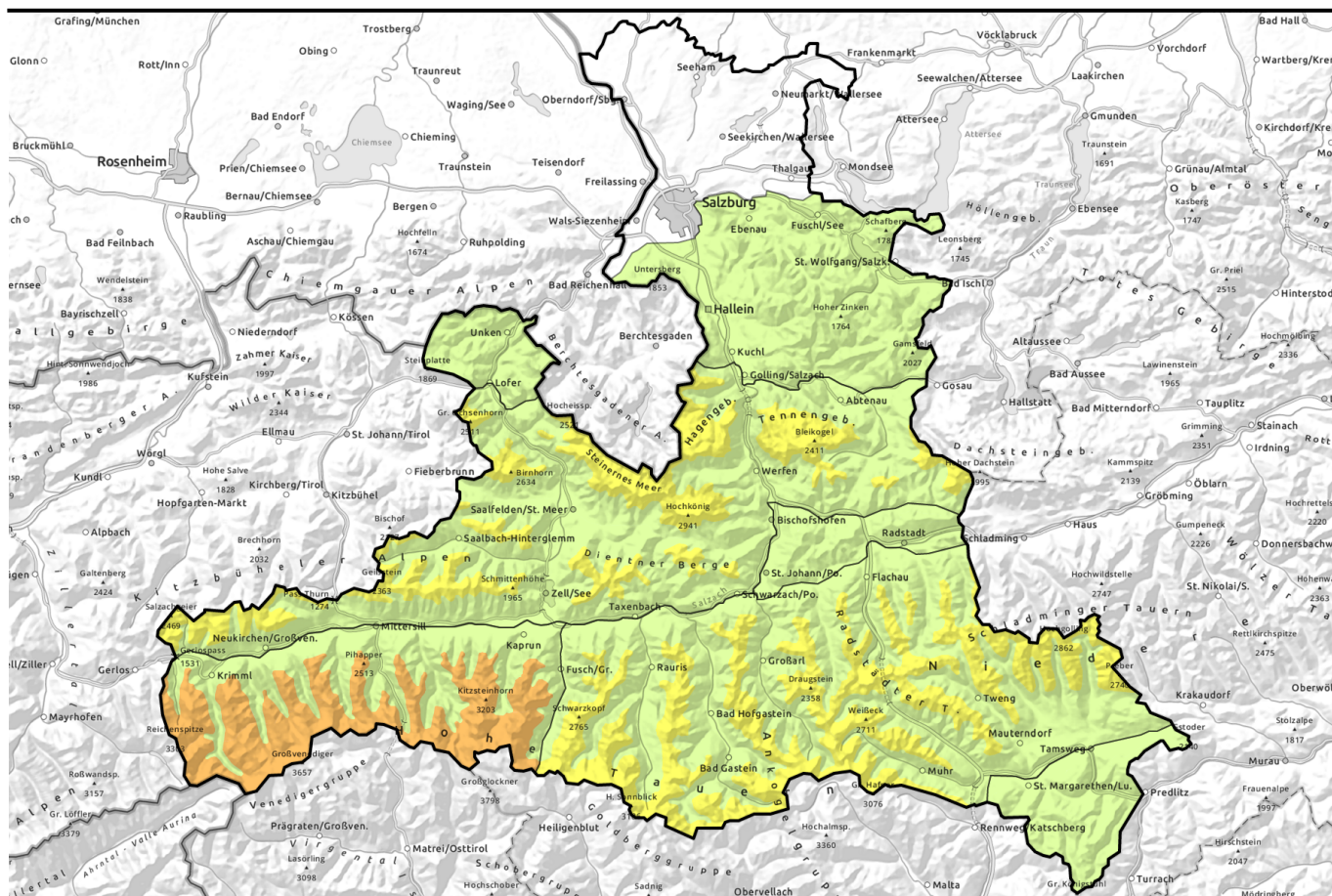


# Avalanche report for Wednesday, 15.03.2023



## Fresh snowdrift accumulations due to southerly foehn and NW winds

	2000 m	Goldberggruppe Nord, Goldberggruppe Alpenhauptkamm, Niedere Tauern Nord, Niedere Tauern Alpenhauptkamm, Niedere Tauern Süd, Ankogelgruppe, Muhr	
	2000 m	Loferer und Leoganger Steinberge, Steinernes Meer, Hochkönig, Hagengebirge, Göllstock, Tennengebirge, Gosaukamm, Kitzbüheler Alpen, Glemmtal, Oberpinzgauer Grasberge, Dientner Grasberge	
		Pongauer Grasberge, Osterhorngruppe, Gamsfeldgruppe, Untersbergstock, Chiemgauer Alpen, Heutal, Reiteralpe	
		Nockberge	
	2000 m	Großvenedigergruppe Nord, Großvenedigergruppe Alpenhauptkamm, Glocknergruppe Alpenhauptkamm, Glocknergruppe Nord	

### Avalanche problems



### Danger ratings

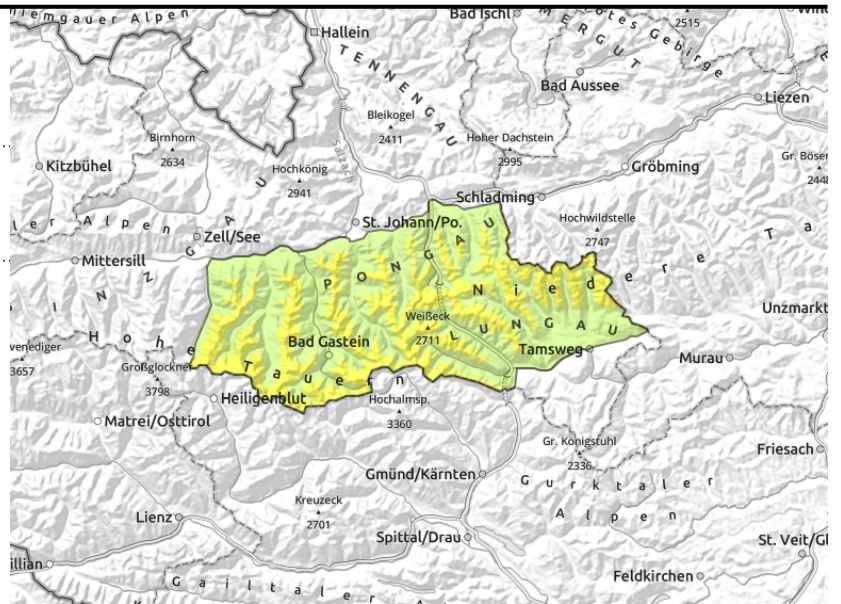
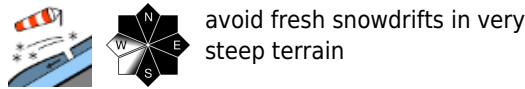
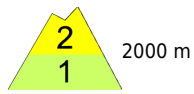


### Expositions



# Avalanche report for **Wednesday, 15.03.2023**

**Goldberggruppe Nord, Goldberggruppe Alpenhauptkamm, Niedere Tauern Nord, Niedere Tauern Alpenhauptkamm, Niedere Tauern Süd, Ankogelgruppe, Muhr**



## Fresh trigger-sensitive snowdrifts

Avalanche danger below 2000m is LOW, above the altitude danger is MODERATE. Danger zones are found on NW/N/E facing slopes behind abrupt discontinuities in the terrain, in gullies and bowls. They are trigger sensitive on very steep slopes, releases can reach medium size. Danger zones increase with ascending altitude, they are difficult to spot due to poor visibility. In very steep terrain, small naturally triggered loose-snow avalanches are possible in the fresh snow due to solar radiation.

## Snowpack structure

At high and high alpine altitudes there was 5-15 cm of fresh snow widespread, in Hohe Tauern 30 cm, which was initially transported by stormy foehn winds and on Wednesday will be transported by NW winds. Bonding of drifts to the loose base deteriorate with ascending altitude. Rain up to 1500-2000 m has moistened the snowpack, the dropping temperatures will regain it some firmness. Atop this base the fresh snow will bond sufficiently.

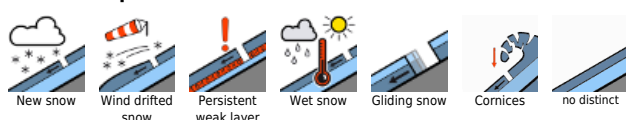
## Weather

The peaks will initially be in clouds, minor snowfall is possible. The clouds will then disperse, sunshine is expected, and better visibility. Very cold. At 2000 m: -9 degrees; at 3000 m: -16 degrees. Stormy NW winds will make it feel subjectively even colder.

## Outlook

Significantly rising temperatures on Thursday. Moistening of the snowpack up to intermediate altitudes. At high altitudes the snowdrifts are partly prone to triggering.

### Avalanche problems



### Danger ratings

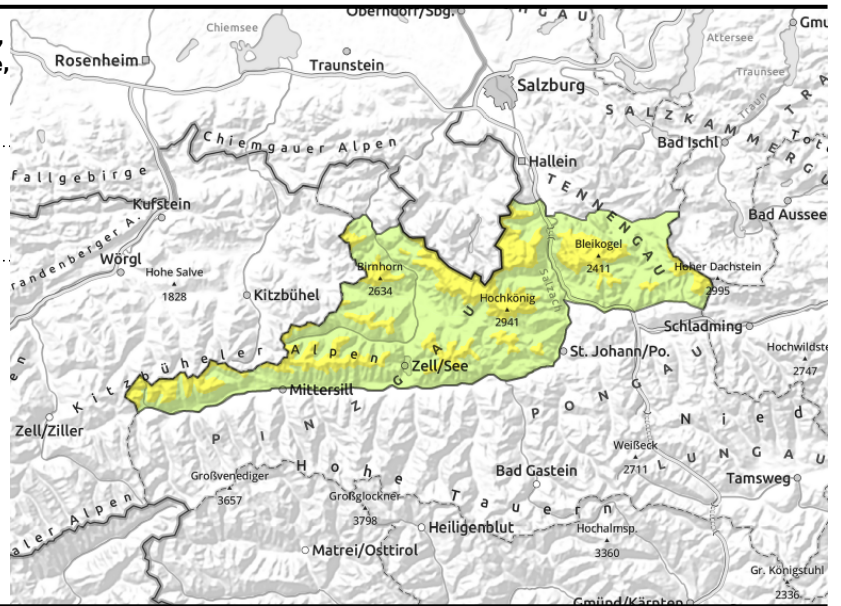
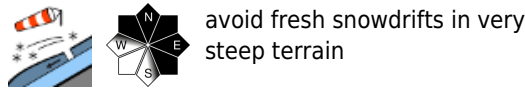
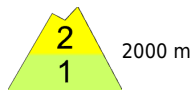


### Expositions



# Avalanche report for **Wednesday, 15.03.2023**

**Loferer und Leoganger Steinberge, Steinernes Meer, Hochkönig, Hagengebirge, Göllstock, Tennengebirge, Gosaukamm, Kitzbüheler Alpen, Glemmtal, Oberpinzgauer Grasberge, Dientner Grasberge**



## Fresh trigger-sensitive snowdrifts

Avalanche danger below 2000m is LOW, above the altitude danger is MODERATE. Danger zones are found on NW/E/S facing slopes behind abrupt discontinuities in the terrain, in gullies and bowls. They are trigger sensitive on very steep slopes, releases can reach medium size.

## Snowpack structure

At high and high alpine altitudes there was 5-15 cm of fresh snow widespread, in Hohe Tauern 30 cm, which was initially transported by stormy foehn winds and on Wednesday will be transported by NW winds. Bonding of drifts to the loose base deteriorate with ascending altitude. Rain up to 1500-2000 m has moistened the snowpack, the dropping temperatures will regain it some firmness. Atop this base the fresh snow will bond sufficiently.

## Weather

The peaks will initially be in clouds, minor snowfall is possible. The clouds will then disperse, sunshine is expected, and better visibility. Very cold. At 2000 m: -9 degrees; at 3000 m: -16 degrees. Stormy NW winds will make it feel subjectively even colder.

## Outlook

Significantly rising temperatures on Thursday. Moistening of the snowpack up to intermediate altitudes. At high altitudes the snowdrifts are partly prone to triggering.

### Avalanche problems



### Danger ratings



### Expositions

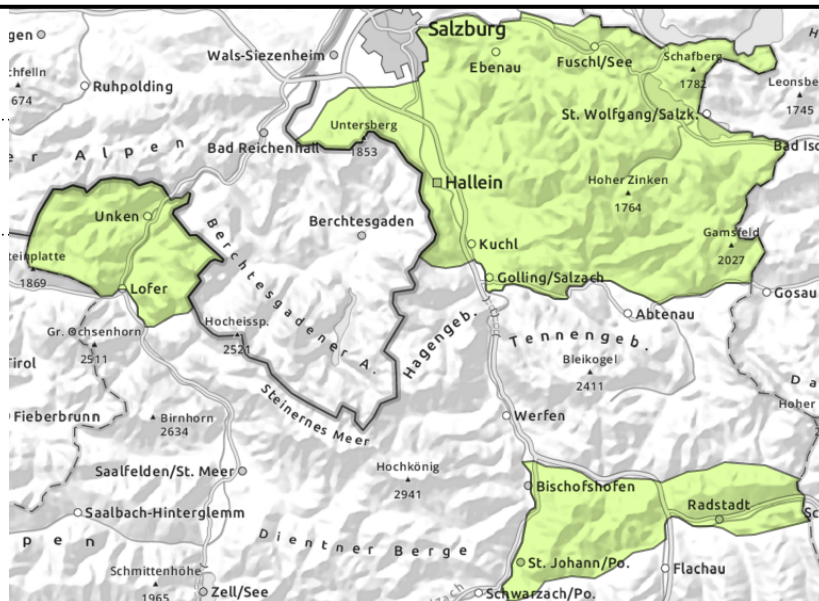


# Avalanche report for **Wednesday, 15.03.2023**

**Pongauer Grasberge, Osterhorngruppe, Gamsfeldgruppe, Untersbergstock, Chiemgauer Alpen, Heutal, Reiteralpe**



avoid fresh snowdrifts in very steep terrain



## Isolated trigger-sensitive snowdrift accumulations

Avalanche danger below 2000m is LOW. Fresh snowdrift accumulations are being generated on east-facing slopes, behind abrupt discontinuities in the terrain, in gullies and bowls. They are trigger sensitive on very steep slopes, releases are generally small-sized.

### Snowpack structure

Rainfall often up to 2000 m has moistened the snowpack, the dropping temperatures then regained it some firmness. Maximum 15 cm of fresh snow and fresh drifts are bonding well. Possible fracture spots for slab avalanches are most likely inside the fresh, shallow drifts.

### Weather

The peaks will initially be in clouds, minor snowfall is possible. The clouds will then disperse, sunshine is expected, and better visibility. Very cold. At 2000 m: -9 degrees; at 3000 m: -16 degrees. Stormy NW winds will make it feel subjectively even colder.

### Outlook

Significantly rising temperatures on Thursday. Moistening of the snowpack up to intermediate altitudes. At high altitudes the snowdrifts are partly prone to triggering.

#### Avalanche problems



#### Danger ratings



#### Expositions

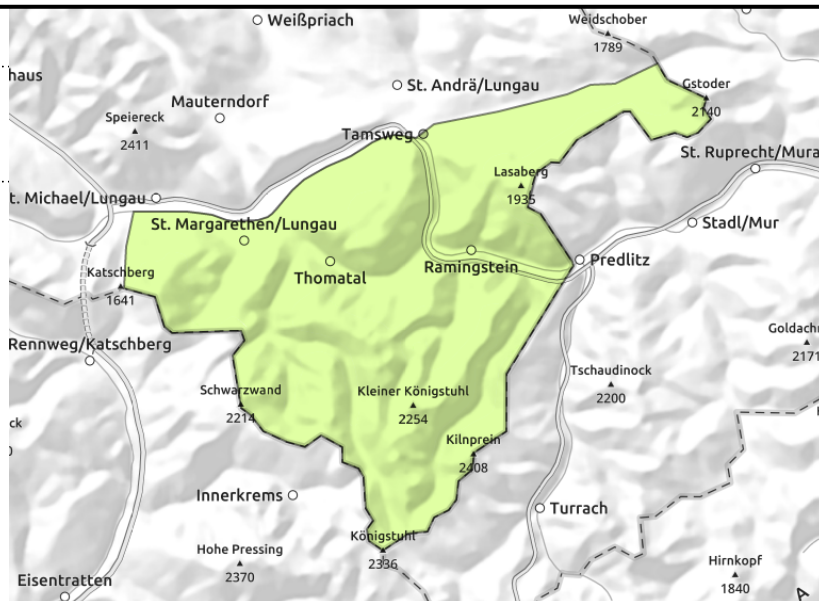


# Avalanche report for **Wednesday, 15.03.2023**

## Nockberge



avoid fresh snowdrifts in very steep terrain



## Isolated trigger-sensitive snowdrift accumulations

Avalanche danger below 2000m is LOW. Fresh snowdrift accumulations are being generated on east-facing slopes, behind abrupt discontinuities in the terrain, in gullies and bowls. They are trigger sensitive on very steep slopes, releases will be small-sized. Danger zones increase with ascending altitude, they are generally easy to recognize.

### Snowpack structure

Conditions in recent days have moistened the snowpack, the dropping temperatures then regained it some firmness. A few cm of fresh snow and fresh drifts are bonding well. The fresh drifts generated by southerly foehn wind and the NW storm wind on Wednesday is generally bonded wello. Possible weak spots for slab avalanches are most likely inside the fresh, shallow drifts.

### Weather

The peaks will initially be in clouds, minor snowfall is possible. The clouds will then disperse, sunshine is expected, and better visibility. Very cold. At 2000 m: -9 degrees; at 3000 m: -16 degrees. Stormy NW winds will make it feel subjectively even colder.

### Outlook

Little change expected

#### Avalanche problems



#### Danger ratings

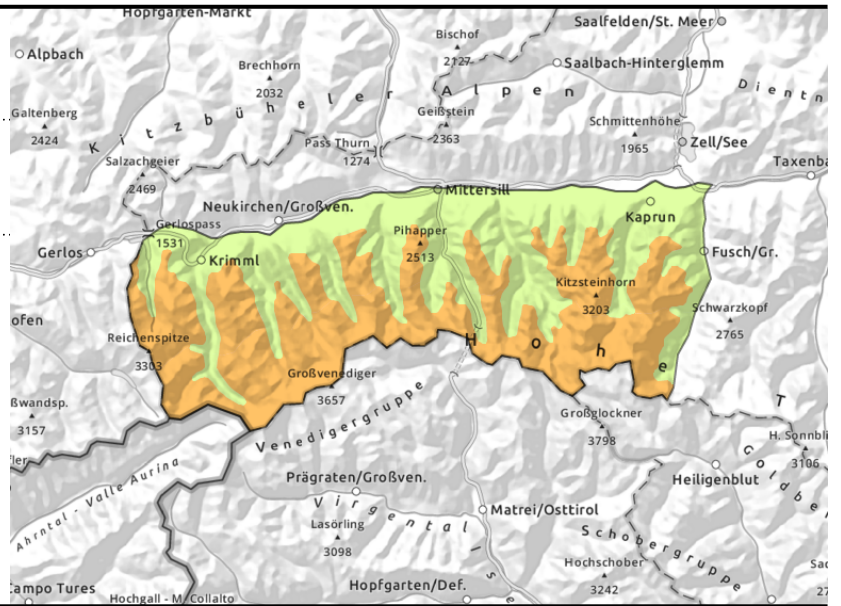
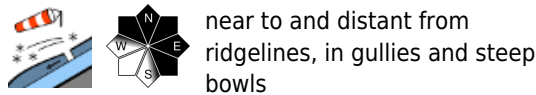
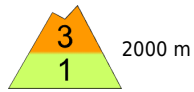


#### Expositions



# Avalanche report for **Wednesday, 15.03.2023**

**Großvenedigergruppe Nord, Großvenedigergruppe  
Alpenhauptkamm, Glocknergruppe  
Alpenhauptkamm, Glocknergruppe Nord**



## Fresh snow plus strong wind impact

Avalanche danger above 2000 m is **CONSIDERABLE**, below that altitude danger is **LOW**. Danger zones are found on NW/N/E/SE facing slopes behind abrupt discontinuities in the terrain, in gullies and bowls. They are trigger sensitive on very steep slopes, releases can reach medium size. Danger zones increase with ascending altitude, they are difficult to spot due to poor visibility. In very steep terrain, small naturally triggered loose-snow avalanches are possible in the fresh snow due to solar radiation.

## Snowpack structure

At high and high alpine altitudes there was 5-15 cm of fresh snow widespread, in Hohe Tauern 30 cm, which was initially transported by stormy foehn winds and on Wednesday will be transported by NW winds. Bonding of drifts to the loose base deteriorate with ascending altitude. Rain up to 1500-2000 m has moistened the snowpack, the dropping temperatures will regain it some firmness. Atop this base the fresh snow will bond sufficiently.

## Weather

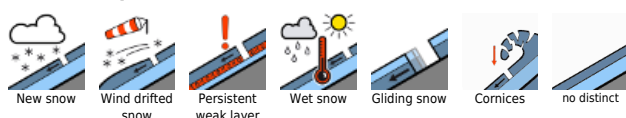
The peaks will initially be in clouds, minor snowfall is possible. The clouds will then disperse, sunshine is expected, and better visibility. Very cold. At 2000 m: -9 degrees; at 3000 m: -16 degrees. Stormy NW winds will make it feel subjectively even colder.

## Outlook

Significantly rising temperatures on Thursday. Moistening of the snowpack up to intermediate altitudes. At high altitudes the snowdrifts are partly prone to triggering.

Translated by Jeffrey McCabe, [www.creativtrans.com](http://www.creativtrans.com)

### Avalanche problems



### Danger ratings



### Expositions

