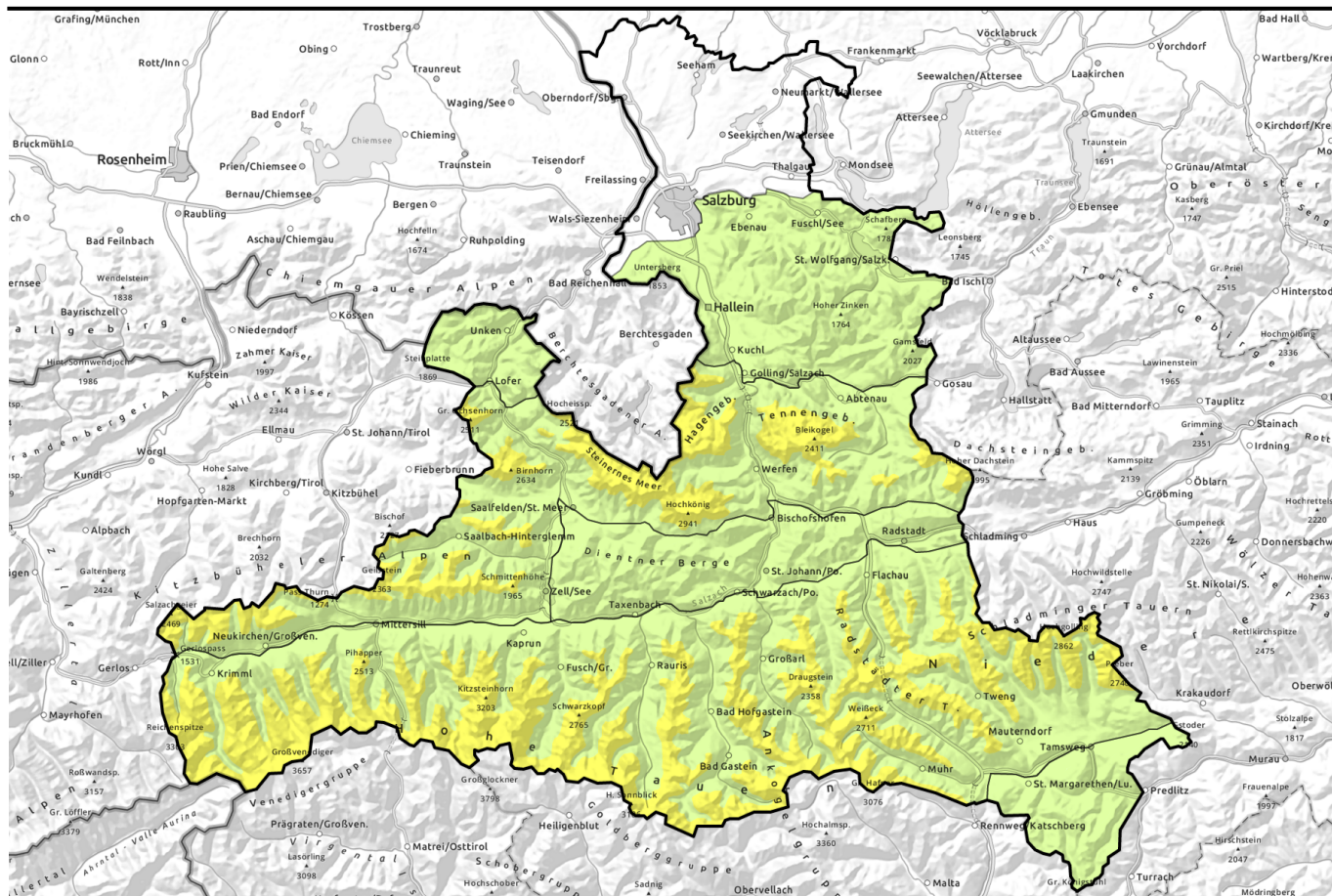


# Avalanche report for Tuesday, 14.03.2023



## Fresh snowdrift accumulations not visible to the naked eye due to poor visibility

	<p>2000 m Großenedigergruppe Nord, Großenedigergruppe Alpenhauptkamm, Glocknergruppe Nord, Glocknergruppe Alpenhauptkamm, Goldberggruppe Nord, Goldberggruppe Alpenhauptkamm, Niedere Tauern Nord, Niedere Tauern Alpenhauptkamm, Niedere Tauern Süd, Ankogelgruppe, Muhr</p>	
	<p>2000 m Loferer und Leoganger Steinberge, Steinernes Meer, Hochkönig, Hagengebirge, Göllstock, Tennengebirge, Gosaukamm, Kitzbüheler Alpen, Glemmtal, Oberpinzgauer Grasberge</p>	
	<p>1 Dientner Grasberge, Pongauer Grasberge, Osterhorngruppe, Gamsfeldgruppe, Untersbergstock, Chiemgauer Alpen, Heutal, Reiteralpe</p>	
	<p>1 Nockberge</p>	

### Avalanche problems



### Danger ratings

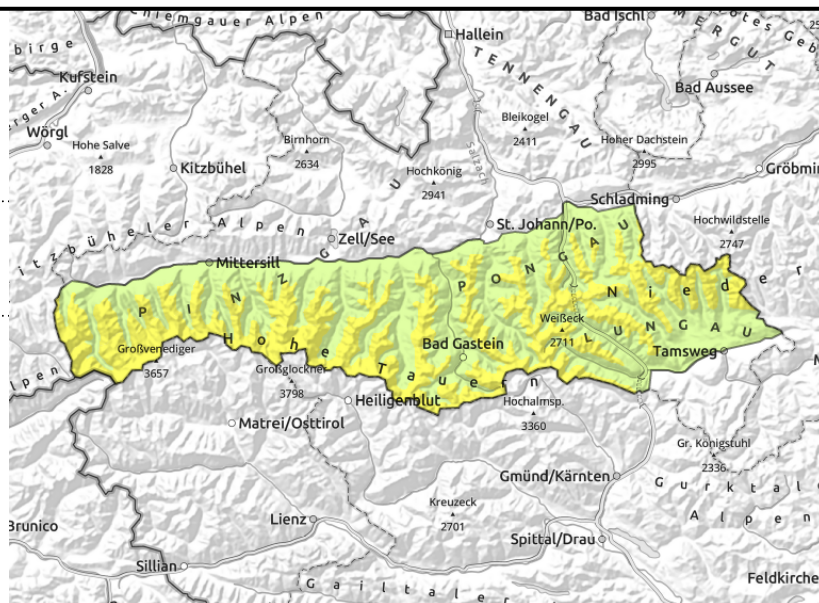
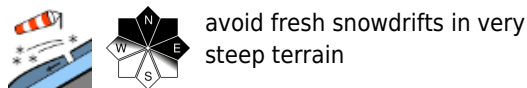


### Expositions



# Avalanche report for Tuesday, 14.03.2023

**Großvenedigergruppe Nord, Großvenedigergruppe Alpenhauptkamm, Glocknergruppe Nord, Glocknergruppe Alpenhauptkamm, Goldberggruppe Nord, Goldberggruppe Alpenhauptkamm, Niedere Tauern Nord, Niedere Tauern Alpenhauptkamm, Niedere Tauern Süd, Ankogelgruppe, Muhr**



## Fresh trigger-sensitive snowdrifts

Avalanche danger below 2000m is LOW, above the altitude danger is MODERATE.

Fresh snowdrift accumulations are being generated on north-facing slopes, behind abrupt discontinuities in the terrain, in gullies and bowls. They are trigger sensitive on very steep slopes, releases can reach medium size. Danger zones increase with ascending altitude, they are difficult to spot due to poor visibility.

Below 1500 m rainfall is weakening the snowpack. Due to the shallowness of the snow at this altitude, only small loose-snow slides are to be expected in very steep terrain.

## Snowpack structure

The snowpack has become very moist in the last few days, thus, the drifts bond well with the old snowpack surface. Weak layers inside the snowpack are prone to triggering, as are snowdrift accumulations at high altitudes where the bonding is poorer.

Weak layers deeply embedded inside the snowpack (Tauern, high alpine regions) are well blanketed, unlikely to trigger.

Up to intermediate altitudes the snowpack is moist. Rain will soften it further, it will forfeit its firmness.

## Weather

The summits are often shrouded in heavy cloud, heavy precipitation further deteriorates the visibility. Snowfall level at 1500 m, then descending to 1200m. In Hohe Tauern, up to 30 cm of fresh snow is expected, in Niedere Tauern 10 cm widespread. On the Main Alpine Ridge, stormy southerly winds, later slackening off and shifting to NW. At 2000 M. descending from -1 to -4 degrees; at 3000 m: from -5 to -10 degrees.

## Outlook

Little change expected

### Avalanche problems



### Danger ratings



### Expositions

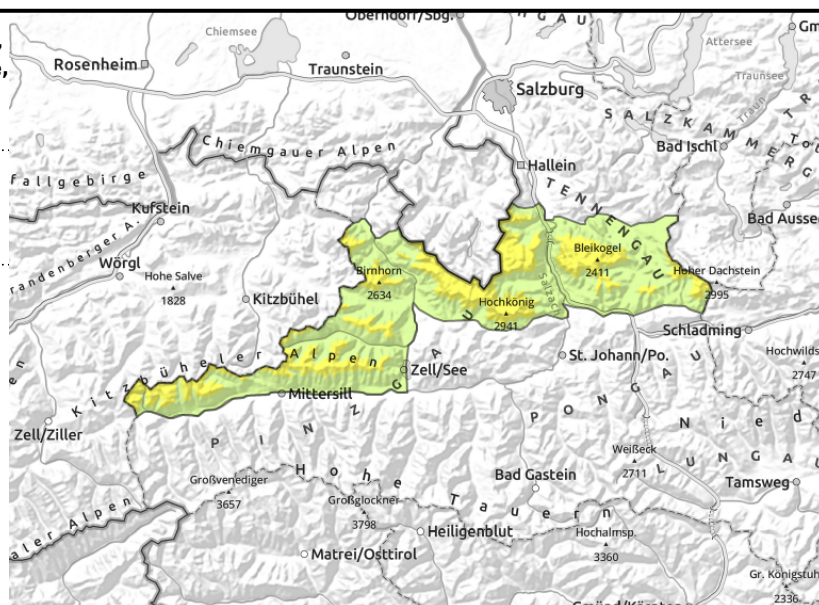


# Avalanche report for Tuesday, 14.03.2023

**Loferer und Leoganger Steinberge, Steinernes Meer, Hochkönig, Hagengebirge, Göllstock, Tennengebirge, Gosaukamm, Kitzbüheler Alpen, Glemmtal, Oberpinzgauer Grasberge**



avoid fresh snowdrifts in very steep terrain



## Fresh trigger-sensitive snowdrifts

Avalanche danger below 2000m is LOW, above the altitude danger is MODERATE.

Fresh snowdrift accumulations are being generated on east-facing slopes, behind abrupt discontinuities in the terrain, in gullies and bowls. They are trigger sensitive on very steep slopes, releases can reach medium size. Danger zones increase with ascending altitude, they are difficult to spot due to poor visibility.

Below 1500 m rainfall is weakening the snowpack. Due to the shallowness of the snow at this altitude, only small loose-snow slides are to be expected in very steep terrain.

## Snowpack structure

The snowpack has become very moist in the last few days, thus, the drifts bond well with the old snowpack surface. Weak layers inside the snowpack are prone to triggering, as are snowdrift accumulations at high altitudes where the bonding is poorer.

Up to intermediate altitudes the snowpack is moist. Rain will soften it further, it will forfeit its firmness.

## Weather

The summits are often shrouded in heavy cloud, heavy precipitation further deteriorates the visibility. Snowfall level at 1500 m, then descending to 1200m. In Hohe Tauern, up to 30 cm of fresh snow is expected, in Niedere Tauern 10 cm widespread. On the Main Alpine Ridge, stormy southerly winds, later slackening off and shifting to NW. At 2000 M. descending from -1 to -4 degrees; at 3000 m: from -5 to -10 degrees.

## Outlook

Little change expected

### Avalanche problems



### Danger ratings



### Expositions

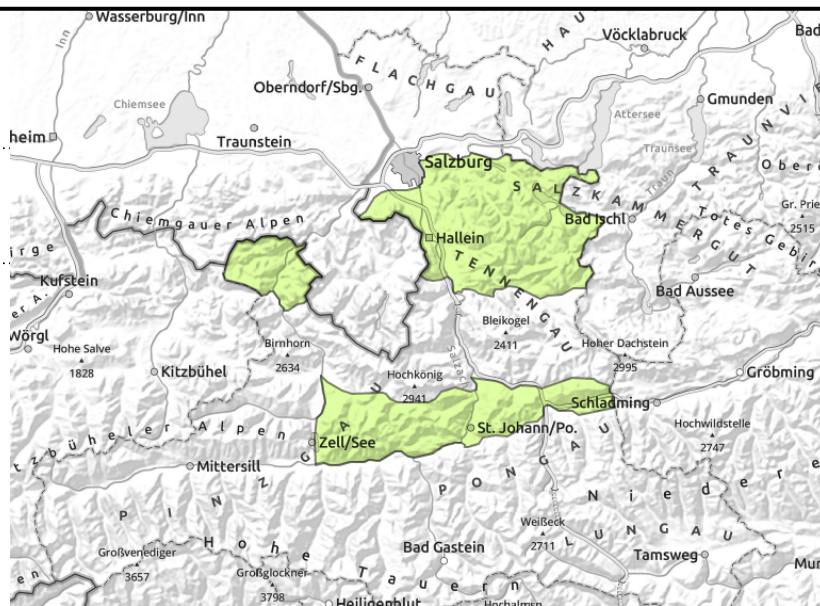


# Avalanche report for Tuesday, 14.03.2023

Dientner Grasberge, Pongauer Grasberge, Osterhorngruppe, Gamsfeldgruppe, Untersbergstock, Chiemgauer Alpen, Heutal, Reiteralpe



avoid fresh snowdrifts in very steep terrain



## Isolated trigger-sensitive snowdrift accumulations

Avalanche danger below 2000m is LOW.

Fresh snowdrift accumulations are being generated on east-facing slopes, behind abrupt discontinuities in the terrain, in gullies and bowls. They are trigger sensitive on very steep slopes, releases can reach medium size. Danger zones increase with ascending altitude, they are difficult to spot due to poor visibility.

Below 1500 m rainfall is weakening the snowpack. Due to the shallowness of the snow at this altitude, only small loose-snow slides are to be expected in very steep terrain.

### Snowpack structure

The snowpack has become very moist in the last few days, thus, the drifts bond well with the old snowpack surface. Weak layers inside the snowpack are prone to triggering, as are snowdrift accumulations at high altitudes where the bonding is poorer.

Up to intermediate altitudes the snowpack is moist. Rain will soften it further, it will forfeit its firmness.

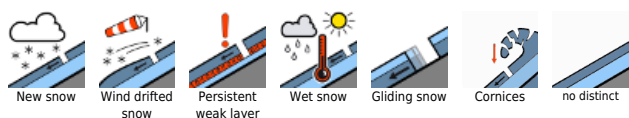
### Weather

The summits are often shrouded in heavy cloud, heavy precipitation further deteriorates the visibility. Snowfall level at 1500 m, then descending to 1200m. In Hohe Tauern, up to 30 cm of fresh snow is expected, in Niedere Tauern 10 cm widespread. On the Main Alpine Ridge, stormy southerly winds, later slackening off and shifting to NW. At 2000 M. descending from -1 to -4 degrees; at 3000 m: from -5 to -10 degrees.

### Outlook

Little change expected

#### Avalanche problems



#### Danger ratings



#### Expositions

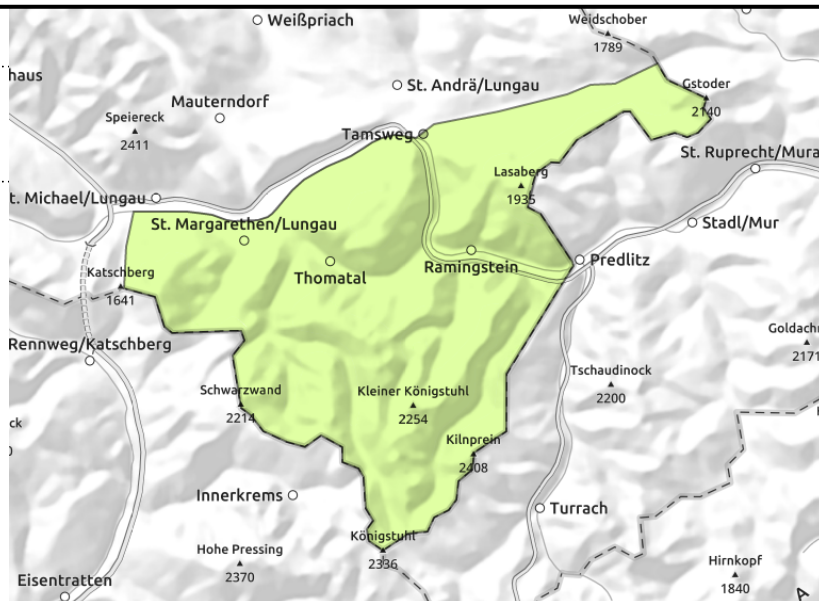


# Avalanche report for Tuesday, 14.03.2023

## Nockberge



avoid fresh snowdrifts in very steep terrain



## Isolated trigger-sensitive snowdrift accumulations

Avalanche danger below 2000m is LOW.

Fresh snowdrift accumulations are being generated on east-facing slopes, behind abrupt discontinuities in the terrain, in gullies and bowls. They are trigger sensitive on very steep slopes, releases can reach medium size. Danger zones increase with ascending altitude, they are difficult to spot due to poor visibility.

Below 1700 m rainfall is weakening the snowpack. Due to the shallowness of the snow at this altitude, only small loose-snow slides are to be expected in very steep terrain.

### Snowpack structure

The snowpack has become very moist in the last few days, thus, the drifts bond well with the old snowpack surface. Weak layers inside the snowpack are prone to triggering, as are snowdrift accumulations at high altitudes where the bonding is poorer.

Up to intermediate altitudes the snowpack is moist. Rain will soften it further, it will forfeit its firmness.

### Weather

The summits are often shrouded in heavy cloud, heavy precipitation further deteriorates the visibility. Snowfall level at 1500 m, then descending to 1200m. In Hohe Tauern, up to 30 cm of fresh snow is expected, in Niedere Tauern 10 cm widespread. On the Main Alpine Ridge, stormy southerly winds, later slackening off and shifting to NW. At 2000 M. descending from -1 to -4 degrees; at 3000 m: from -5 to -10 degrees.

### Outlook

Little change expected

Translated by Jeffrey McCabe, [www.creativtrans.com](http://www.creativtrans.com)

#### Avalanche problems



New snow



Wind drifted snow



Persistent weak layer



Wet snow



Gliding snow



Cornices



no distinct

#### Danger ratings



1

low



2

moderate



3

considerable



4

high



5

very high

#### Expositions

