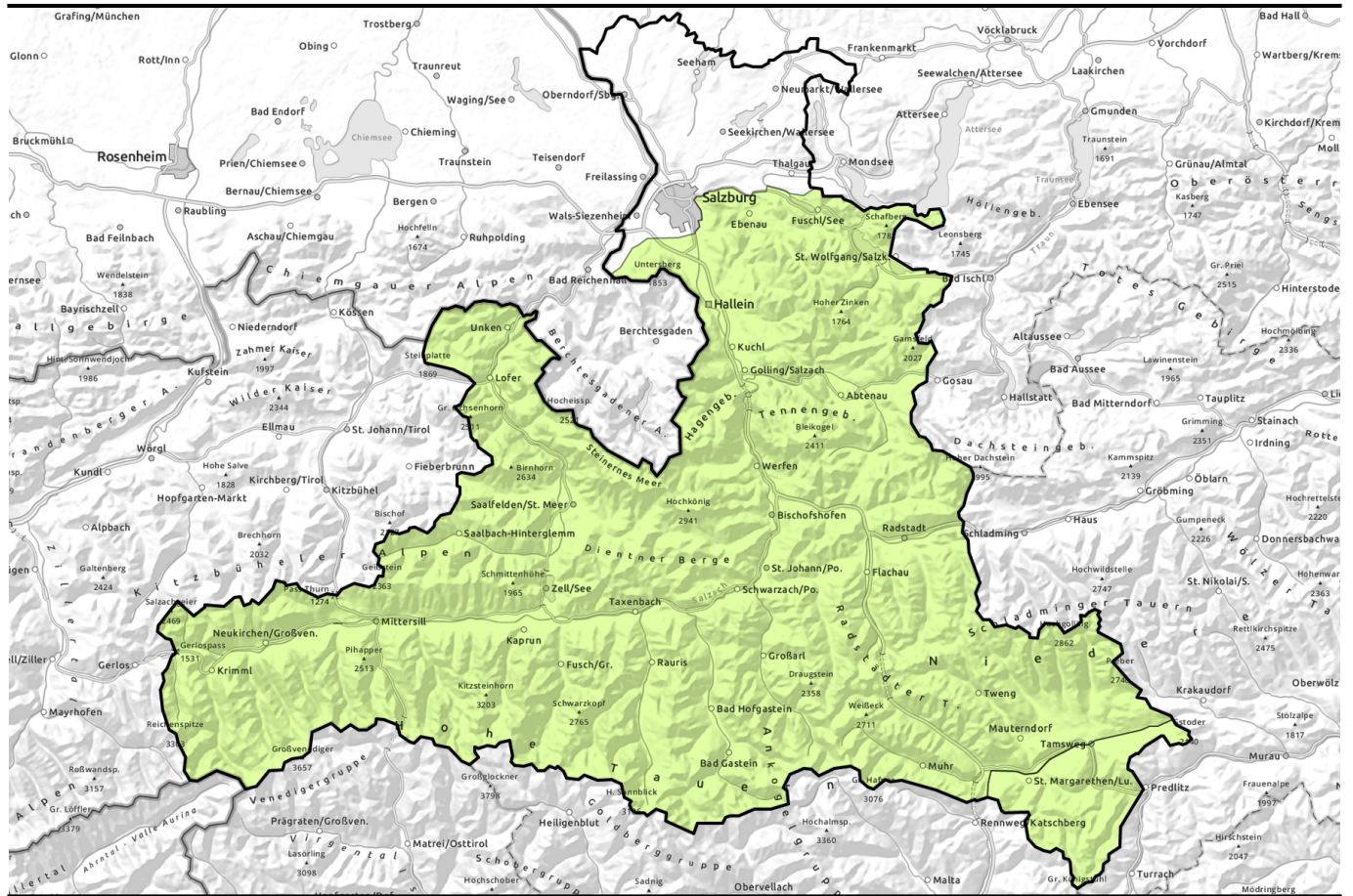


# Avalanche report for Monday, 13.03.2023, morning



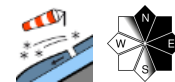
## Daytime avalanche danger cycle



Nockberge



Osterhorngruppe, Gamsfeldgruppe, Untersbergstock, Steinernes Meer, Hochkönig, Hagengebirge, Göllstock, Tennengebirge, Gosaukamm, Chiemgauer Alpen, Heutal, Reiteralpe, Loferer und Leoganger Steinberge, Kitzbüheler Alpen, Glemmtal, Oberpinzgauer Grasberge, Großvenedigergruppe Nord, Großvenedigergruppe Alpenhauptkamm, Glocknergruppe Nord, Glocknergruppe Alpenhauptkamm, Goldberggruppe Nord, Goldberggruppe Alpenhauptkamm, Dientner Grasberge, Pongauer Grasberge, Niedere Tauern Nord, Niedere Tauern Alpenhauptkamm, Niedere Tauern Süd, Ankogelgruppe, Muhr



### Avalanche problems

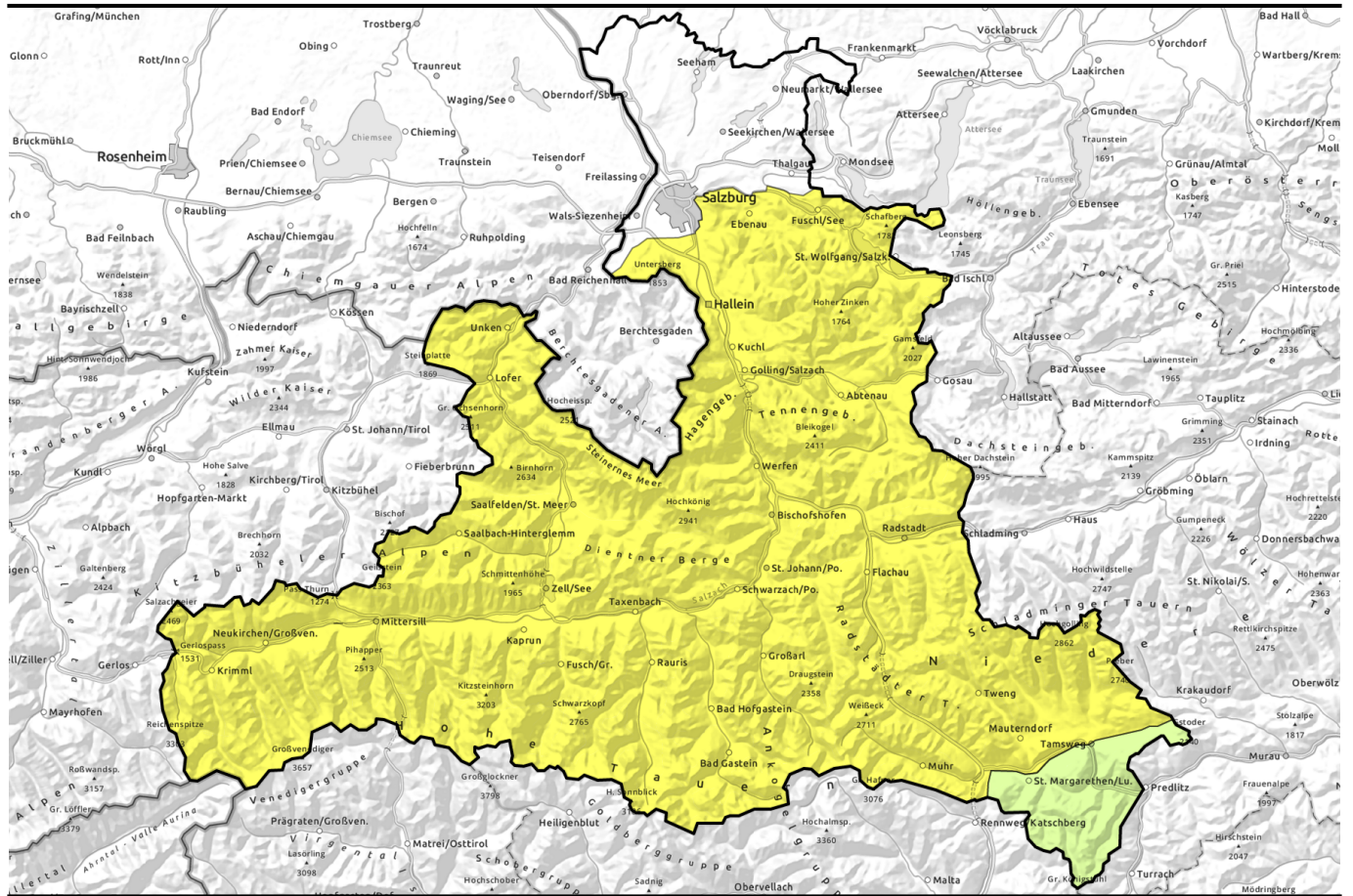


### Danger ratings



### Expositions





## Tageszeitlicher Anstieg der Lawinengefahr



Nockberge



Osterhorngruppe, Gamsfeldgruppe, Untersbergstock, Steinernes Meer, Hochkönig, Hagengebirge, Göllstock, Tennengebirge, Gosaukamm, Chiemgauer Alpen, Heutal, Reiteralpe, Loferer und Leoganger Steinberge, Kitzbüheler Alpen, Glemmtal, Oberpinzgauer Grasberge, Großvenedigergruppe Nord, Großvenedigergruppe Alpenhauptkamm, Glocknergruppe Nord, Glocknergruppe Alpenhauptkamm, Goldberggruppe Nord, Goldberggruppe Alpenhauptkamm, Dientner Grasberge, Pongauer Grasberge, Niedere Tauern Nord, Niedere Tauern Alpenhauptkamm, Niedere Tauern Süd, Ankogelgruppe, Muhr



### Avalanche problems



### Danger ratings



### Expositions

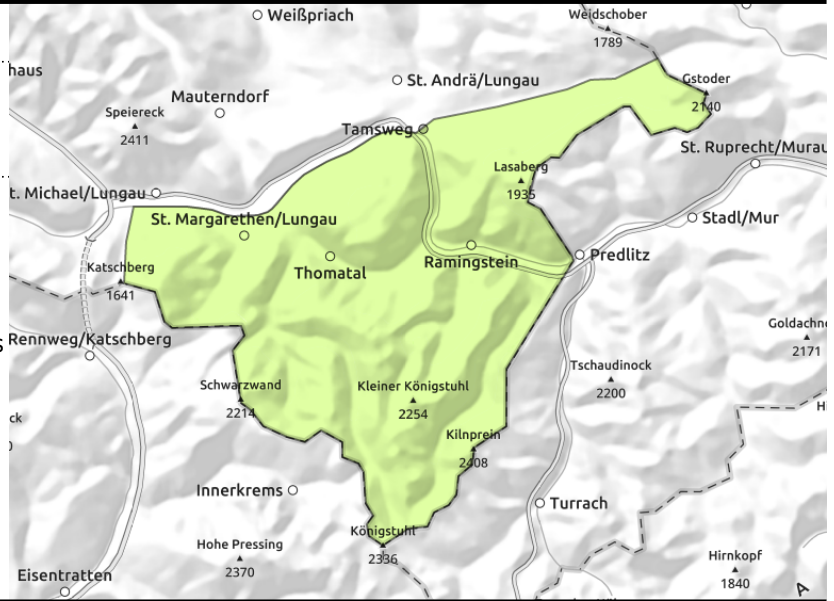


# Avalanche report for Monday, 13.03.2023

## Nockberge



the warmer and weaker the snowpack, the more likely are wet loose-snow avalanches - avoid extremely steep south-facing slopes and danger zones below them



## Very isolated small danger zones

Avalanche danger is LOW.

As temperatures rise during the day, small wet loose-snow avalanches and glide-snow avalanches are possible.

Older small snowdrift accumulations at high altitudes can in some places be triggered even by the weight of one sole skier. Danger zones occur behind abrupt discontinuities in the terrain, in gullies, bowls. Caution of falls in risky zones.

## Snowpack structure

All in all, the snowpack is quite stable, small snowdrift accumulations have bonded well with the old surface. Only on shady slopes are they still prone to triggering in isolated cases.

During the course of the day, the snowpack will become increasingly wet up to high altitudes and thereby forfeit its firmness.

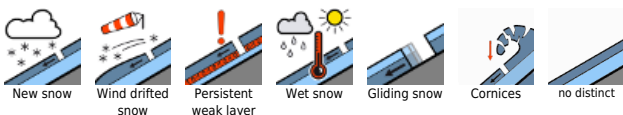
## Weather

On Monday, clouds passing through will keep the skies gray but visibility should remain adequate. As of midday, sunny weather will take over, no precipitation. Winds will be light. At 2000 m: 0 to 8 degrees.

## Outlook

Due to dropping temperatures and precipitation on Tuesday, new snowdrift accumulations will be generated. At low altitudes the rainfall will weaken the snowpack.

### Avalanche problems



### Danger ratings

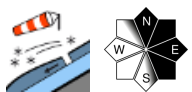
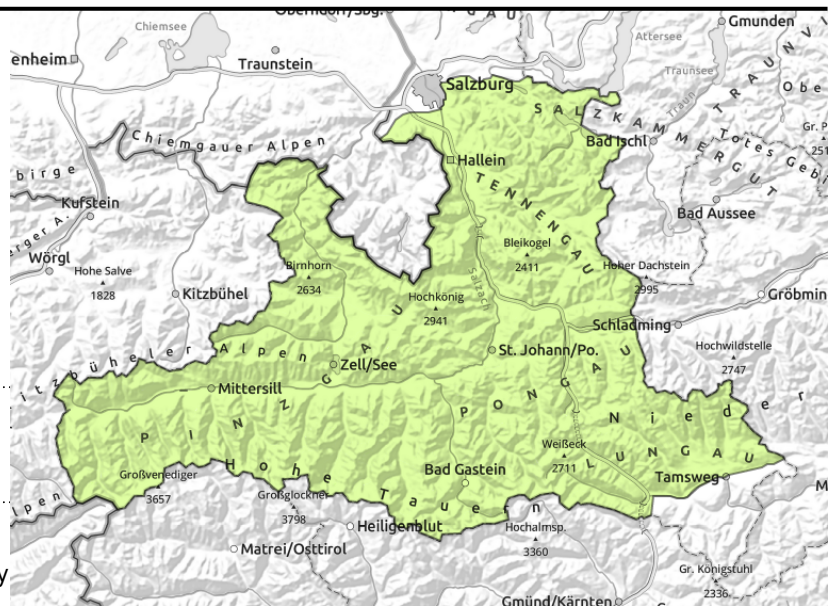


### Expositions



# Avalanche report for Monday, 13.03.2023, morning

Osterhorngruppe, Gamsfeldgruppe, Untersbergstock, Steinernes Meer, Hochkönig, Hagengebirge, Göllstock, Tennengebirge, Gosaukamm, Chiemgauer Alpen, Heutal, Reiteralpe, Loferer und Leoganger Steinberge, Kitzbüheler Alpen, Glemmtal, Oberpinzgauer Grasberge, Großvenedigergruppe Nord, Großvenedigergruppe Alpenhauptkamm, Glocknergruppe Nord, Glocknergruppe Alpenhauptkamm, Goldberggruppe Nord, Goldberggruppe Alpenhauptkamm, Dientner Grasberge, Pongauer Grasberge, Niedere Tauern Nord, Niedere Tauern Alpenhauptkamm, Niedere Tauern Süd, Ankogelgruppe, Muhr



circumvent small fresh snowdrift accumulations in very steep terrain

## Wet-snow avalanches starting at midday

Avalanche danger is LOW.

As temperatures rise during the day, small wet loose-snow avalanches and glide-snow avalanches are possible.

Older small snowdrift accumulations at high altitudes can in some places be triggered even by the weight of one sole skier. Danger zones occur behind abrupt discontinuities in the terrain, in gullies, bowls. Caution of falls in risky zones.

### Snowpack structure

Snowdrift accumulations have bonded well with the old surface due to rising temperatures. Only on shady slopes are they still prone to triggering in isolated cases.

On Sunday, rainfall up to intermediate altitudes moistened the snowpack. During the course of the day on Monday the snowpack will become increasingly wet, particularly on south-facing slopes, and forfeit its firmness.

### Weather

On Monday, clouds passing through will keep the skies gray but visibility should remain adequate. As of midday, sunny weather will take over, no precipitation. Winds will be light. At 2000 m: 0 to 8 degrees, at 3000 m: -5 to +2 degrees.

### Outlook

Due to dropping temperatures and precipitation on Tuesday, new snowdrift accumulations will be generated. At low altitudes the rainfall will weaken the snowpack.

#### Avalanche problems



#### Danger ratings

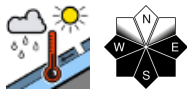
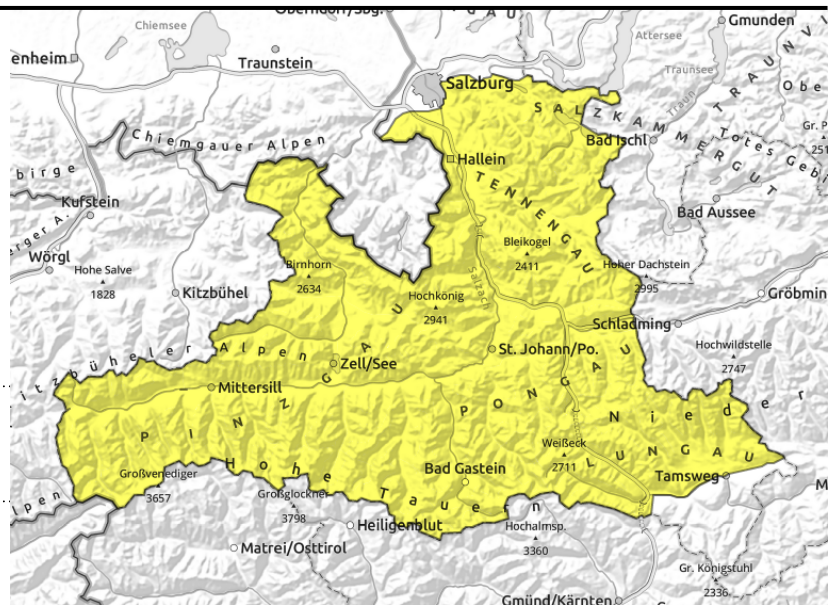


#### Expositions



# Avalanche report for Monday, 13.03.2023, afternoon

Osterhorngruppe, Gamsfeldgruppe, Untersbergstock, Steinernes Meer, Hochkönig, Hagengebirge, Göllstock, Tennengebirge, Gosakamm, Chiemgauer Alpen, Heutal, Reiteralpe, Loferer und Leoganger Steinberge, Kitzbüheler Alpen, Glemmtal, Oberpinzgauer Grasberge, Großvenedigergruppe Nord, Großvenedigergruppe Alpenhauptkamm, Glocknergruppe Nord, Glocknergruppe Alpenhauptkamm, Goldberggruppe Nord, Goldberggruppe Alpenhauptkamm, Dientner Grasberge, Pongauer Grasberge, Niedere Tauern Nord, Niedere Tauern Alpenhauptkamm, Niedere Tauern Süd, Ankogelgruppe, Muhr



the warmer and weaker the snowpack, the more likely are wet loose-snow avalanches - avoid extremely steep south-facing slopes and danger zones below them

## Wet-snow avalanches starting at midday

Avalanche danger is LOW.

As temperatures rise during the day, small wet loose-snow avalanches and glide-snow avalanches are possible.

Older small snowdrift accumulations at high altitudes can in some places be triggered even by the weight of one sole skier. Danger zones occur behind abrupt discontinuities in the terrain, in gullies, bowls. Caution of falls in risky zones.

### Snowpack structure

Snowdrift accumulations have bonded well with the old surface due to rising temperatures. Only on shady slopes are they still prone to triggering in isolated cases.

On Sunday, rainfall up to intermediate altitudes moistened the snowpack. During the course of the day on Monday the snowpack will become increasingly wet, particularly on south-facing slopes, and forfeit its firmness.

### Weather

On Monday, clouds passing through will keep the skies gray but visibility should remain adequate. As of midday, sunny weather will take over, no precipitation. Winds will be light. At 2000 m: 0 to 8 degrees, at 3000 m: -5 to +2 degrees.

### Outlook

Due to dropping temperatures and precipitation on Tuesday, new snowdrift accumulations will be generated. At low altitudes the rainfall will weaken the snowpack.

Translated by Jeffrey McCabe, [www.creativtrans.com](http://www.creativtrans.com)

#### Avalanche problems



#### Danger ratings



#### Expositions

