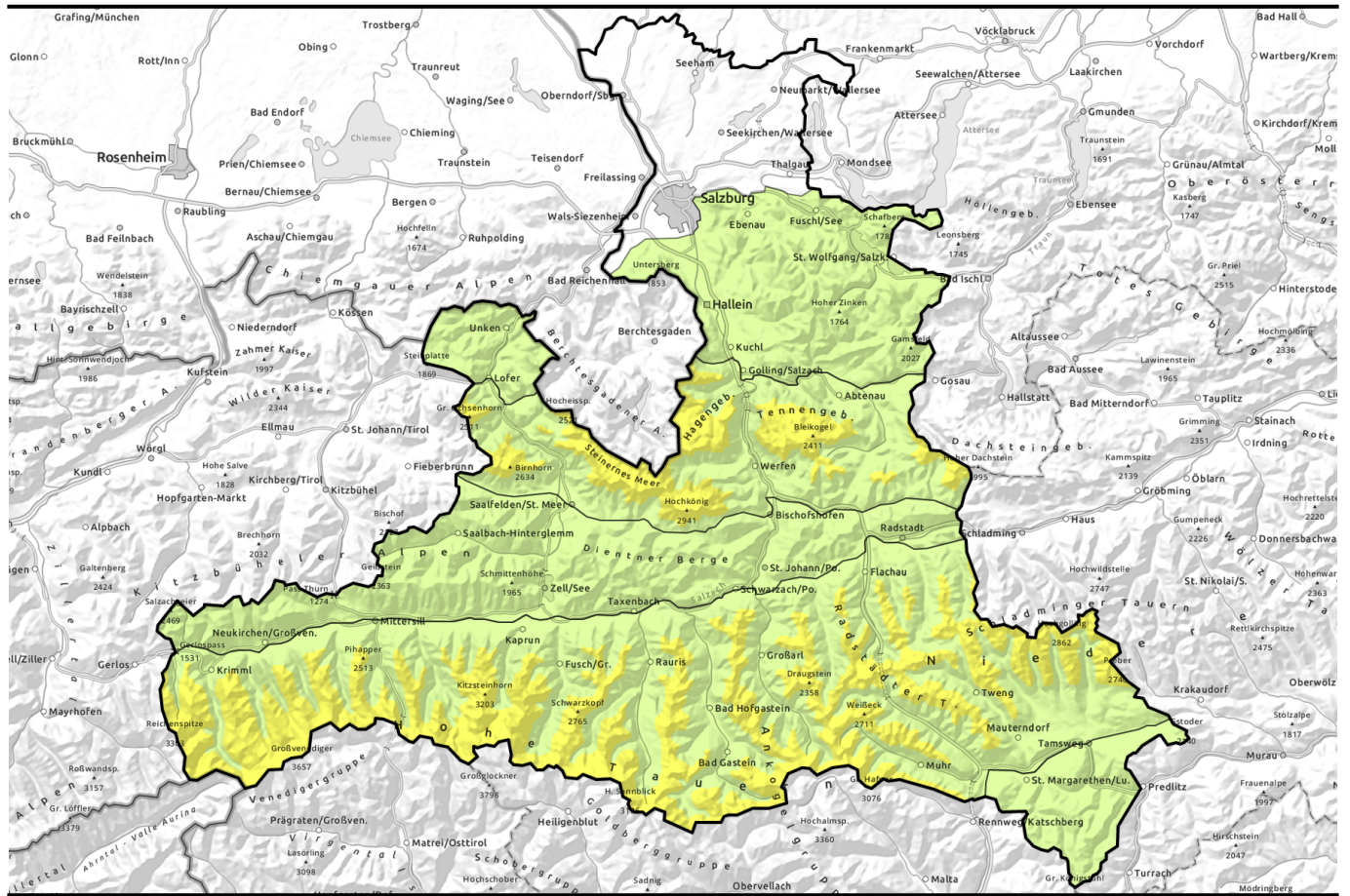


Avalanche report for Sunday, 12.03.2023

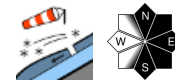


Caution: freshly generated snowdrifts

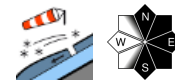


2200 m

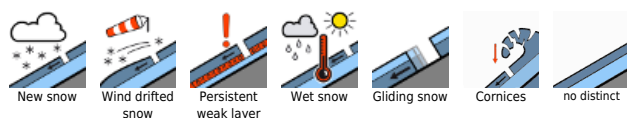
Großenedigergruppe Nord, Großenedigergruppe Alpenhauptkamm, Glocknergruppe Nord, Glocknergruppe Alpenhauptkamm, Goldberggruppe Nord, Goldberggruppe Alpenhauptkamm, Niedere Tauern Nord, Niedere Tauern Alpenhauptkamm, Niedere Tauern Süd, Ankogelgruppe, Muhr, Steinernes Meer, Hochkönig, Hagengebirge, Göllstock, Tennengebirge, Gosaukamm, Loferer und Leoganger Steinberge



Osterhorngruppe, Gamsfeldgruppe, Oberpinzgauer Grasberge, Kitzbüheler Alpen, Glemmtal, Dientner Grasberge, Pongauer Grasberge, Nockberge, Untersbergstock, Chiemgauer Alpen, Heutal, Reiteralpe



Avalanche problems



Danger ratings

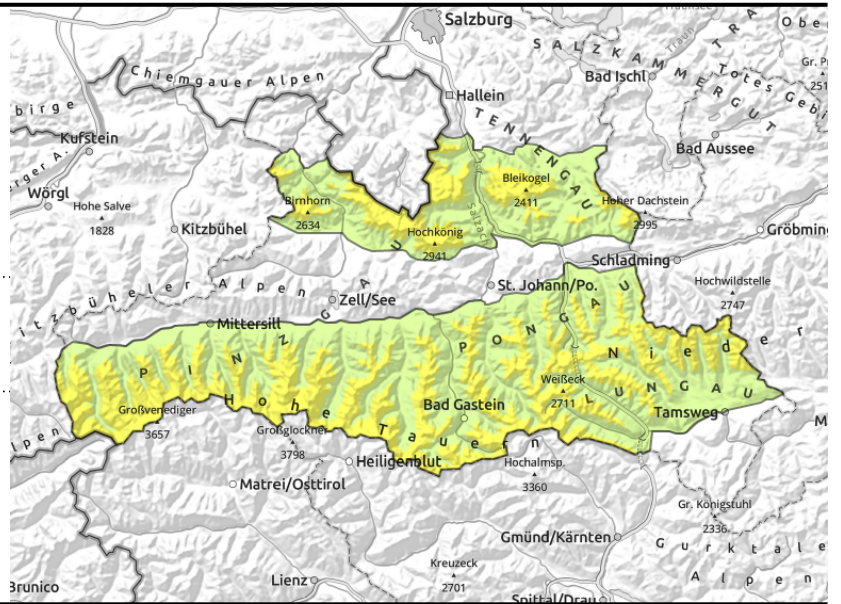


Expositions



Avalanche report for Sunday, 12.03.2023

Großvenedigergruppe Nord, Großvenedigergruppe Alpenhauptkamm, Glocknergruppe Nord, Glocknergruppe Alpenhauptkamm, Goldberggruppe Nord, Goldberggruppe Alpenhauptkamm, Niedere Tauern Nord, Niedere Tauern Alpenhauptkamm, Niedere Tauern Süd, Ankogelgruppe, Muhr, Steinernes Meer, Hochkönig, Hagengebirge, Göllstock, Tennengebirge, Gosaukamm, Loferer und Leoganger Steinberge



avoid small fresh snowdrift accumulations on very steep slopes

Trigger-sensitive snowdrift accumulations in some places

Avalanche danger above 2200 m is MODERATE, fresh snowdrift accumulations on east-facing slopes behind abrupt discontinuities in the terrain, in gullies and bowls - also distant from ridgelines - are the main danger. Particularly in steep ridgeline terrain they can trigger and grow to medium-sized avalanches. Danger zones increase in frequency with ascending altitude, often cannot be seen by the naked eye.

Snowpack structure

At high altitudes are snowdrift accumulations are shady, wind-protected east-facing slopes atop soft layers (faceted crystals, surface hoar) which are prone to triggering. Apart from this, bonding of fresh snow and drifts is good. Weak layers embedded inside the snowpack (Tauern, high alpine regions) are well blanketed, unlikely to trigger.

Weather

On Sunday, heavy cloud right from the start, the peaks often shrouded. Light to moderate precipitation in all massifs, in some places snowfall down to the valley floor, in the afternoon only above 800-1300m. Winds will be moderate to brisk from the west, strong at high altitudes. At 2000m: -8 to -2 degrees; at 3000 m: -10 degrees.

Outlook

As temperatures rise, the danger of wet loose-snow avalanches rises with them.

Avalanche problems



Danger ratings

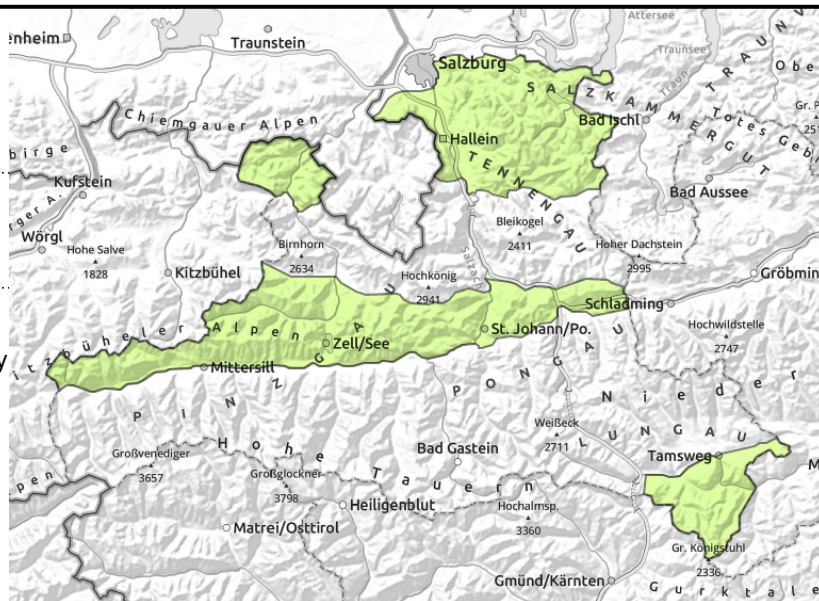


Expositions



Avalanche report for Sunday, 12.03.2023

Osterhorngruppe, Gamsfeldgruppe, Oberpinzgauer Grasberge, Kitzbüheler Alpen, Glemmtal, Dientner Grasberge, Pongauer Grasberge, Nockberge, Untersbergstock, Chiemgauer Alpen, Heutal, Reiteralpe



circumvent small fresh snowdrift accumulations in very steep terrain

Only few danger zones

Avalanche danger is LOW.

Fresh snowdrift accumulations on east-facing slopes behind abrupt discontinuities in the terrain, in gullies and bowls - also distant from ridgelines - are the main danger. Particularly in steep ridgeline terrain they can trigger but are generally small-sized. Danger zones increase in frequency with ascending altitude, often cannot be seen by the naked eye.

Snowpack structure

Bonding of fresh snow and drifts is good. Faceted layers on shady wind-protected east-facing slopes have snowdrifts deposited atop them (faceted crystals, surface hoar).

Weather

On Sunday, heavy cloud right from the start, the peaks often shrouded. Light to moderate precipitation in all massifs, in some places snowfall down to the valley floor, in the afternoon only above 800-1300m. Winds will be moderate to brisk from the west, strong at high altitudes. At 2000m: -8 to -2 degrees.

Outlook

As temperatures rise, the danger of wet loose-snow avalanches rises with them.

Translated by Jeffrey McCabe, www.creativtrans.com

Avalanche problems



Danger ratings



Expositions

