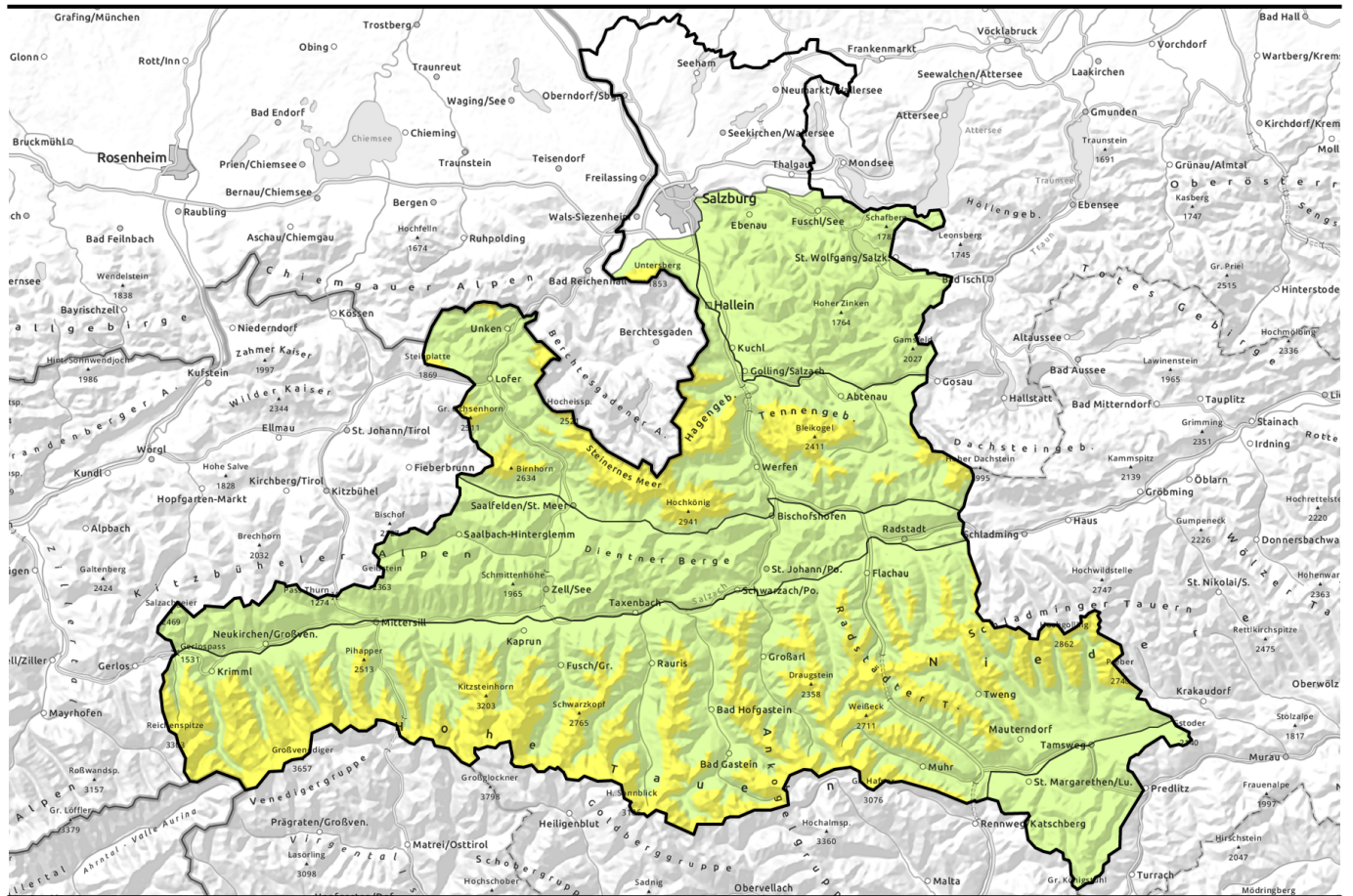


Avalanche report for Saturday, 11.03.2023



Caution: freshly generated snowdrifts



2200 m

Großvenedigergruppe Nord, Großvenedigergruppe Alpenhauptkamm, Glocknergruppe Nord, Glocknergruppe Alpenhauptkamm, Goldberggruppe Nord, Goldberggruppe Alpenhauptkamm, Niedere Tauern Nord, Niedere Tauern Alpenhauptkamm, Niedere Tauern Süd, Ankogelgruppe, Muhr, Steinernes Meer, Hochkönig, Hagengebirge, Göllstock, Tennengebirge, Gosaukamm, Loferer und Leoganger Steinberge, Chiemgauer Alpen, Heutal, Reiteralpe, Untersbergstock



Osterhorngruppe, Gamsfeldgruppe, Oberpinzgauer Grasberge, Kitzbüheler Alpen, Glemmtal, Dientner Grasberge, Pongauer Grasberge, Nockberge



Avalanche problems



Danger ratings

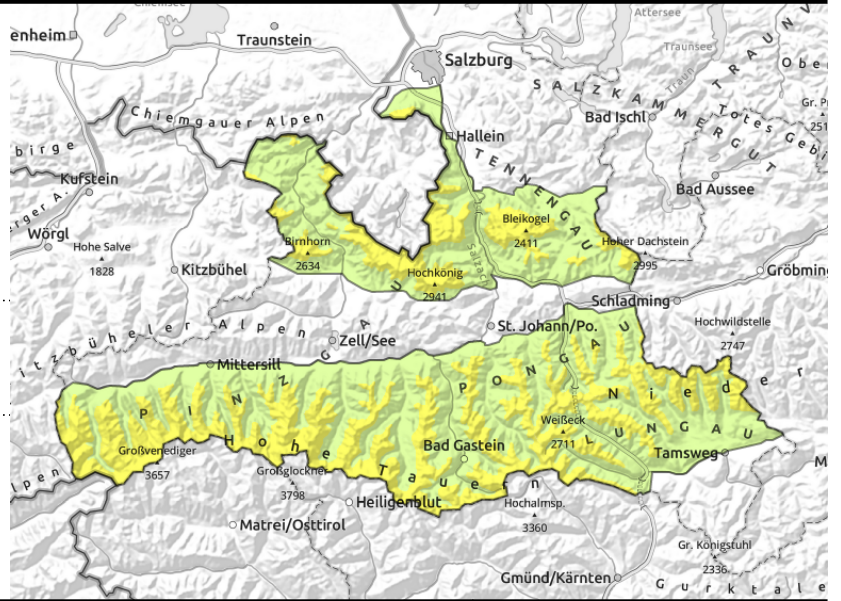


Expositions



Avalanche report for Saturday, 11.03.2023

Großvenedigergruppe Nord, Großvenedigergruppe Alpenhauptkamm, Glocknergruppe Nord, Glocknergruppe Alpenhauptkamm, Goldberggruppe Nord, Goldberggruppe Alpenhauptkamm, Niedere Tauern Nord, Niedere Tauern Alpenhauptkamm, Niedere Tauern Süd, Ankogelgruppe, Muhr, Steinernes Meer, Hochkönig, Hagengebirge, Göllstock, Tennengebirge, Gosaukamm, Loferer und Leoganger Steinberge, Chiemgauer Alpen, Heutal, Reiteralpe, Untersbergstock



2200 m



avoid small fresh snowdrift accumulations on very steep slopes

Trigger-sensitive snowdrift accumulations in some places

Avalanche danger above 2200 m is MODERATE, below that altitude danger is LOW. Fresh snowdrift accumulations on east-facing slopes behind abrupt discontinuities in the terrain, in gullies and bowls - also distant from ridgelines - are the main danger. Particularly in steep ridgeline terrain they can trigger and grow to large-sized avalanches. Danger zones increase in frequency with ascending altitude, often cannot be seen by the naked eye.

Snowpack structure

At high altitudes are snowdrift accumulations are shady, wind-protected east-facing slopes atop soft layers (faceted crystals, surface hoar) which are prone to triggering. Apart from this, bonding of fresh snow and drifts is good. Weak layers embedded inside the snowpack (Tauern, high alpine regions) are well blanketed, unlikely to trigger.

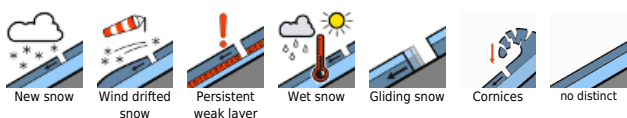
Weather

On Saturday, dense cloud, minor snowfall, poor visibility, later on dry weather will prevail. In the afternoon, some sunshine, improved visibility, strong-to-stormy W/NW winds will slacken off. Strongest gusts will reach 100 km/hr, can be expected in morning in the Radstadt Tauern and Nockberge. Temperatures will drop. At 2000 m: -9 degrees; at 3000 m; -14 degrees.

Outlook

Little change

Avalanche problems



Danger ratings

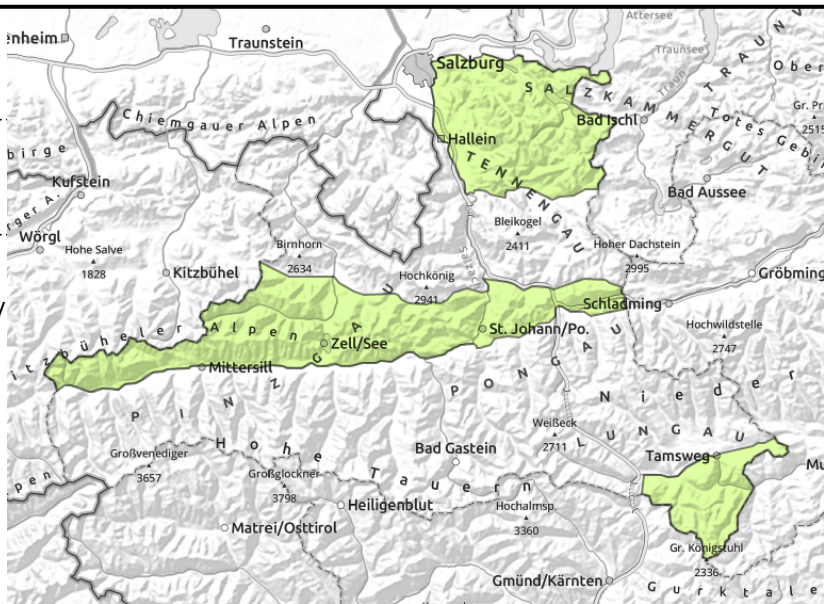


Expositions



Avalanche report for Saturday, 11.03.2023

Osterhorngruppe, Gamsfeldgruppe, Oberpinzgauer Grasberge, Kitzbüheler Alpen, Glemmtal, Dientner Grasberge, Pongauer Grasberge, Nockberge



circumvent small fresh snowdrift accumulations in very steep terrain

Only few danger zones

Avalanche danger is LOW.

Fresh snowdrift accumulations on east-facing slopes behind abrupt discontinuities in the terrain, in gullies and bowls - also distant from ridgelines - are the main danger. Particularly in steep ridgeline terrain they can trigger and grow to large-sized avalanches. Danger zones increase in frequency with ascending altitude, often cannot be seen by the naked eye.

Snowpack structure

Bonding of fresh snow and drifts is good, snow fell often on bare ground. Faceted layers on shady wind-protected east-facing slopes have snowdrifts deposited atop them (faceted crystals, surface hoar).

Weather

On Saturday, dense cloud, minor snowfall, poor visibility, later on dry weather will prevail. In the afternoon, some sunshine, improved visibility, strong-to-stormy W/NW winds will slacken off. Temperatures will drop. At 2000 m: -9 degrees.

Outlook

Little change

Translated by Jeffrey McCabe, www.creativtrans.com

Avalanche problems



Danger ratings



Expositions

