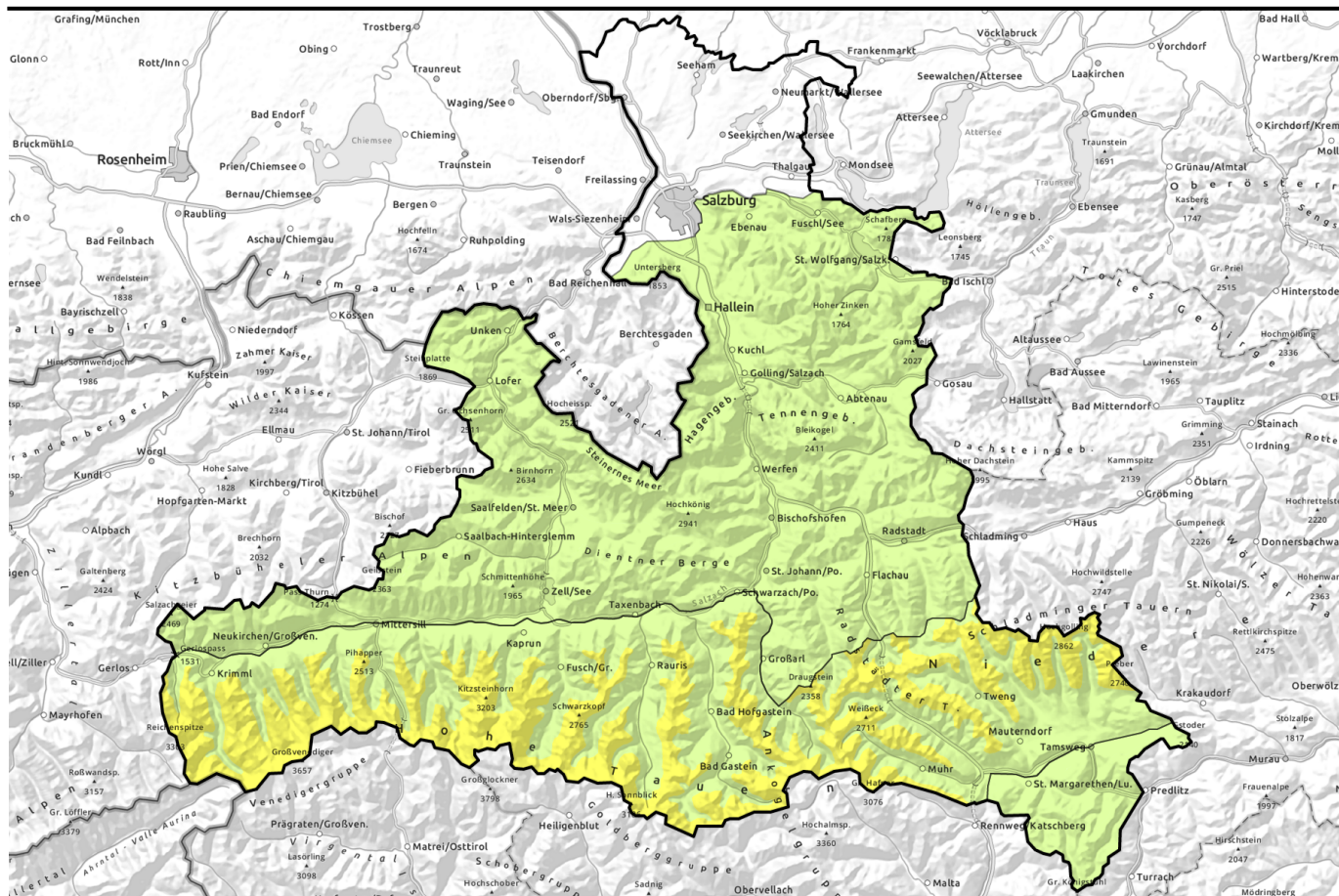


Avalanche report for Friday, 10.03.2023



Caution: freshly generated snowdrifts are often prone to triggering



Kitzbüheler Alpen, Glemmtal, Oberpinzgauer Grasberge, Chiemgauer Alpen, Heutal, Reiteralpe, Dientner Grasberge, Pongauer Grasberge, Osterhorngruppe, Gamsfeldgruppe, Untersbergstock, Niedere Tauern Nord, Nockberge, Loferer und Leoganger Steinberge, Steinernes Meer, Hochkönig, Hagengebirge, Göllstock, Tennengebirge, Gosaukamm



2200 m

Großenedigergruppe Alpenhauptkamm, Glocknergruppe Alpenhauptkamm, Großenedigergruppe Nord, Glocknergruppe Nord, Goldberggruppe Nord, Goldberggruppe Alpenhauptkamm, Ankogelgruppe, Muhr, Niedere Tauern Alpenhauptkamm, Niedere Tauern Süd



Avalanche problems



Danger ratings

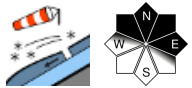
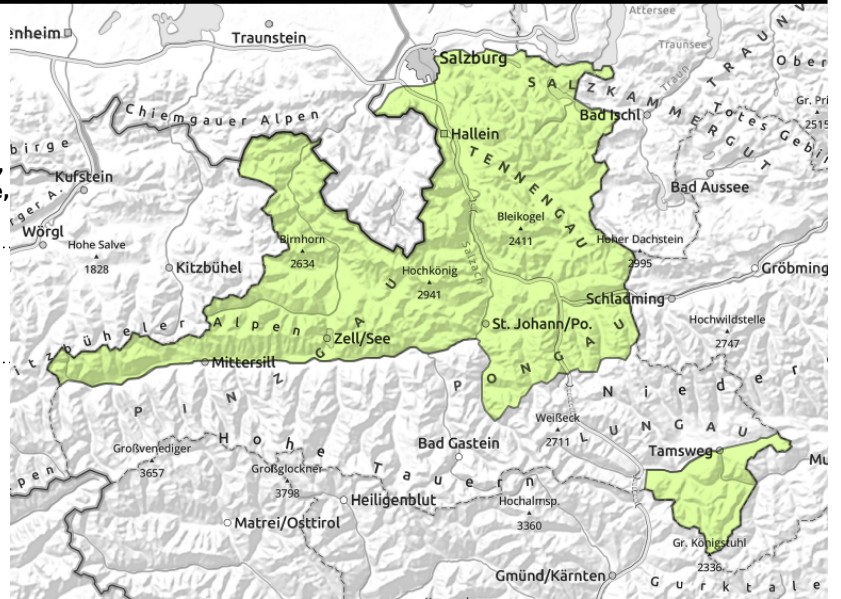


Expositions



Avalanche report for Friday, 10.03.2023

Kitzbüheler Alpen, Glemmtal, Oberpinzgauer Grasberge, Chiemgauer Alpen, Heutal, Reiteralpe, Dientner Grasberge, Pongauer Grasberge, Osterhorngruppe, Gamsfeldgruppe, Untersbergstock, Niedere Tauern Nord, Nockberge, Loferer und Leoganger Steinberge, Steinernes Meer, Hochkönig, Hagengebirge, Göllstock, Tennengebirge, Gosaukamm



avoid small fresh snowdrift accumulations on very steep slopes

Only few danger zones

Avalanche danger is LOW. As a result of storm W winds, fresh snowdrift accumulations are being formed. They are small but on very steep (>35°) N/E facing slopes above 2000 m can be easily triggered. Danger zones occur in gullies, bowls and behind abrupt discontinuities in the terrain. They are not always visible to the naked eye. Caution in fall-endangered zones.

Snowpack structure

The snowpack is generally stable. Due to storm-strength westerly winds, small snowdrift accumulations will be generated, they will be deposited on N/E facing slopes atop a loose old snowpack surface (faceted crystals, surface hoar) and are prone to triggering in isolate cases. A melt-freeze crust will form at night. Weather on Friday will moisten the snowpack up to high altitudes.

Weather

On Friday cloud cover will soon move in, visibility will become more diffuse. At midday a few rain and snow showers (snowfall level at 1500m). Limited visibility for a brief spell, then clouds will disperse, but more showers will arrive in late afternoon. Winds will be light to moderate from S/W, in evening in the Northern Alps strong-to-stormy westerly winds will arise. At 2000 m: 0 degrees; at 3000 m: -7 degrees.

Outlook

Strong-to-stormy NW winds starting Friday night, temperatures dropping significantly, a bit of fresh snow on Saturday. Small fresh snowdrifts are the main danger.

Avalanche problems



Danger ratings

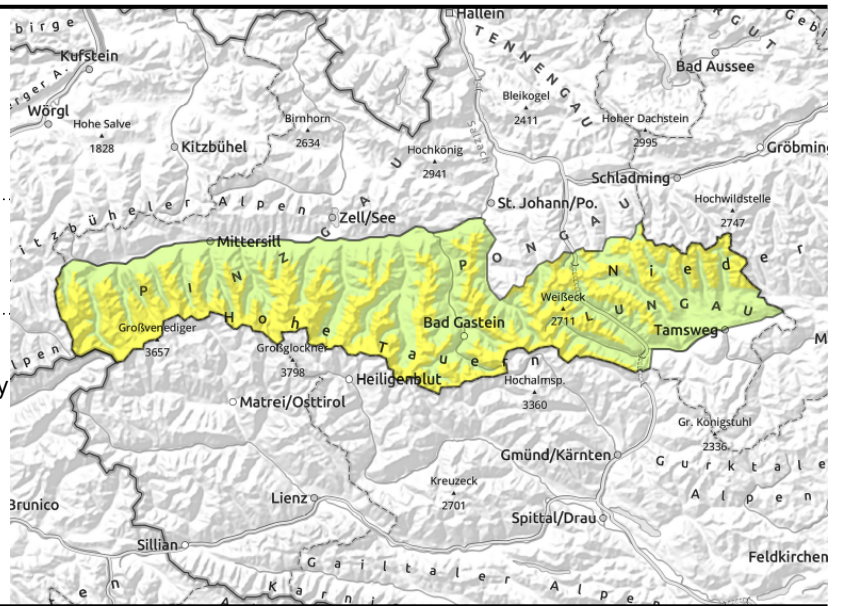




Expositions



Avalanche report for Friday, 10.03.2023

Großvenedigergruppe Alpenhauptkamm,
 Glocknergruppe Alpenhauptkamm,
 Großvenedigergruppe Nord, Glocknergruppe Nord,
 Goldberggruppe Nord, Goldberggruppe
 Alpenhauptkamm, Ankogelgruppe, Muhr, Niedere
 Tauern Alpenhauptkamm, Niedere Tauern Süd



  circumvent small fresh
 snowdrift accumulations in very
 steep terrain

Isolated small dangerous snowdrift patches

Avalanche danger above 2200m is MODERATE, below that altitude danger is LOW. Fresh, small snowdrift accumulations can trigger on very steep (>35°) N/E facing slopes above 2000 m. Danger zones occur in gullies, bowls and behind abrupt discontinuities in the terrain. They are not always visible to the naked eye in the diffuse light conditions.

Snowpack structure

Small and isolated medium-sized snowdrift accumulations lie deposited atop a loose old snowpack surface (faceted crystals, surface hoar) and are prone to triggering in isolated cases, as has been confirmed by many reports. Weak layers deeply embedded inside the snowpack (Tauern, high alpine regions) are well blanketed and unlikely to trigger.

Up to 2300m the snowpack was moistened in all aspects on Thursday, on sunny slopes higher still. During the night, a superficial melt-freeze crust will form. Weather on Friday will moisten the snowpack up to high altitudes.

Weather

On Friday cloud cover will soon move in, visibility will become more diffuse. At midday a few rain and snow showers (snowfall level at 1500m). Limited visibility for a brief spell, then clouds will disperse, but more showers will arrive in late afternoon. Winds will be light to moderate from S/W, in evening in the Northern Alps strong-to-stormy westerly winds will arise. At 2000 m: 0 degrees; at 3000 m: -7 degrees.

Outlook

Strong-to-stormy NW winds starting Friday night, temperatures dropping significantly, a bit of fresh snow on Saturday. No significant changer in avalanche danger levels is expected.

Translated by Jeffrey McCabe, www.creativtrans.com

Avalanche problems



Danger ratings



Expositions

