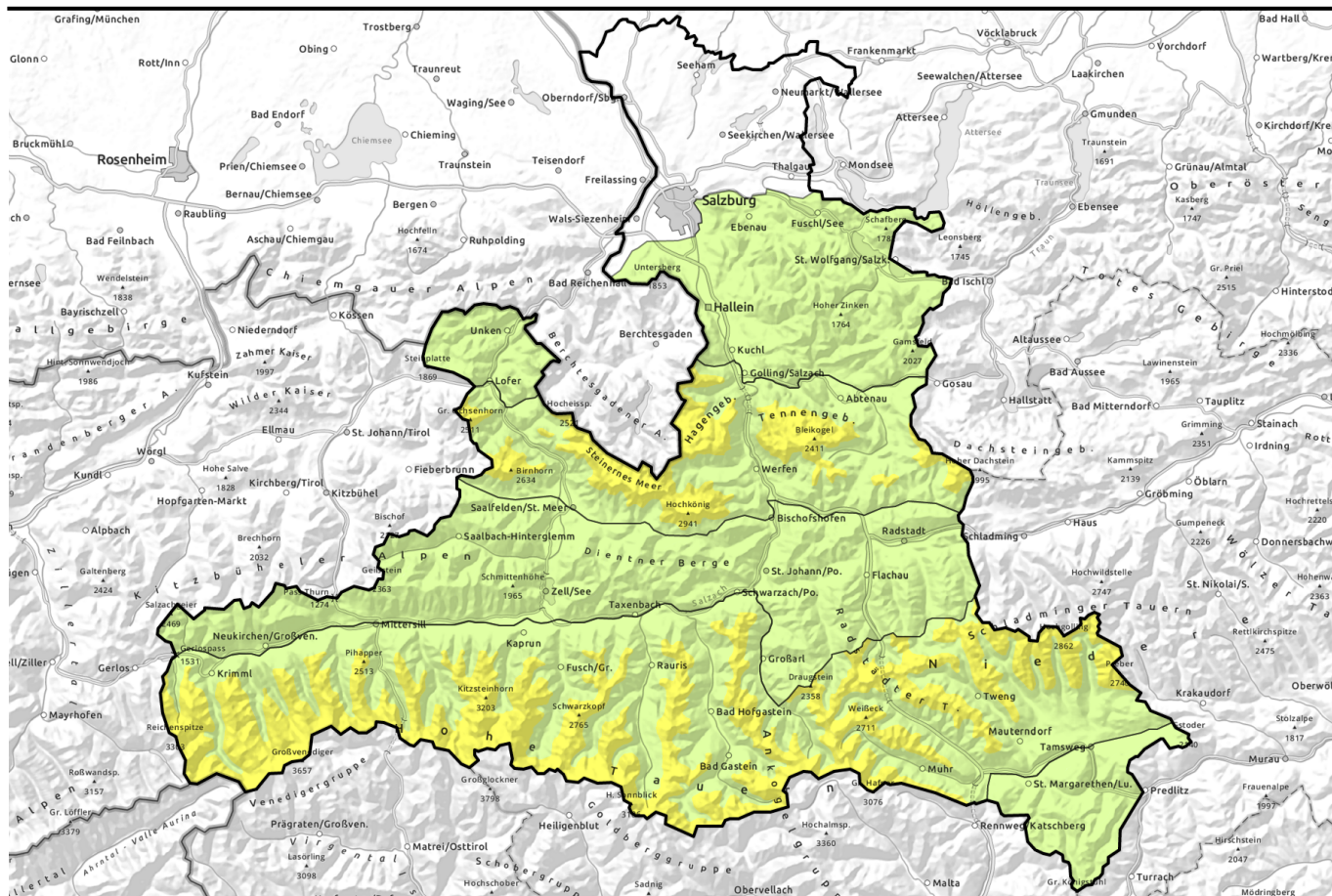


# Avalanche report for Thursday, 09.03.2023



## Caution: freshly generated snowdrifts



Kitzbüheler Alpen, Glemmtal, Oberpinzgauer Grasberge, Chiemgauer Alpen, Heutal, Reiteralpe, Dientner Grasberge, Pongauer Grasberge, Osterhorngruppe, Gamsfeldgruppe, Untersbergstock, Niedere Tauern Nord, Nockberge



2200 m

Großvenedigergruppe Alpenhauptkamm, Glocknergruppe Alpenhauptkamm, Großvenedigergruppe Nord, Glocknergruppe Nord, Goldberggruppe Nord, Goldberggruppe Alpenhauptkamm, Ankogelgruppe, Muhr, Niedere Tauern Alpenhauptkamm, Niedere Tauern Süd, Loferer und Leoganger Steinberge, Steinernes Meer, Hochkönig, Hagengebirge, Göllstock, Tennengebirge, Gosaukamm



### Avalanche problems



### Danger ratings

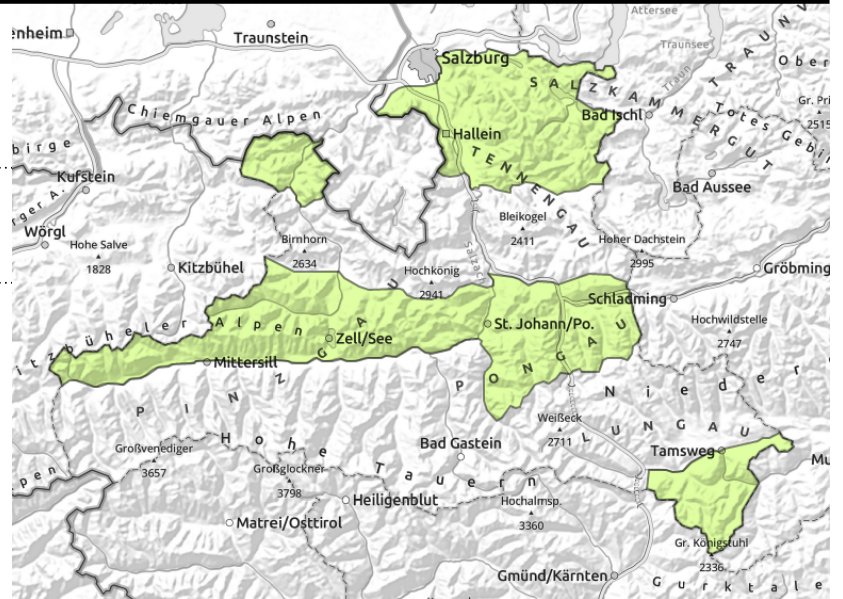


### Expositions



# Avalanche report for Thursday, 09.03.2023

Kitzbüheler Alpen, Glemmtal, Oberpinzgauer Grasberge, Chiemgauer Alpen, Heutal, Reiteralpe, Dientner Grasberge, Pongauer Grasberge, Osterhorngruppe, Gamsfeldgruppe, Untersbergstock, Niedere Tauern Nord, Nockberge



avoid small fresh snowdrift accumulations on very steep slopes

## Only few danger zones

Avalanche danger is LOW. As a result of storm W winds, fresh snowdrift accumulations are being formed. They are small but on very steep (>35°) N/E facing slopes above 2000 m can be easily triggered. Danger zones occur in gullies, bowls and behind abrupt discontinuities in the terrain. They are not always visible to the naked eye in the diffuse light conditions. Caution urged wherever taking a fall is possible.

## Snowpack structure

The snowpack is generally stable. Due to storm-strength westerly winds, small snowdrift accumulations will be generated, they will be deposited on N/E facing slopes atop a loose old snowpack surface (faceted crystals, surface hoar) and are prone to triggering in isolate cases. Mild temperatures and solar radiation will moisten the snowpack, plus diffuse light conditions on shady slopes up to 2200-2400.

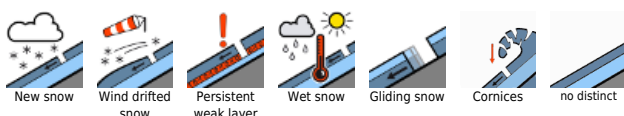
## Weather

On Thursday, very stormy conditions in the mountains. In the Tauern, the foehn will collapse. In early morning clouds will swiftly move in in northern regions, bringing rainfall and snow showers (snowfall level 1200 to 1500 m) accompanied by stormy westerly winds. In exposed terrain in the Northern Alps, gusts reaching gale strength are possible. Mostly dry in the Central Alps, with dispersed clouds. As of midday in the Northern Alps, clouds will disperse somewhat, it will remain dry, visibility will be good, winds will slacken off. AT 2000 m: -2 to 0 degrees; at 3000 m: -9 to -7 degrees.

## Outlook

Snowdrift accumulations will consolidated. Low avalanche danger.

### Avalanche problems



### Danger ratings

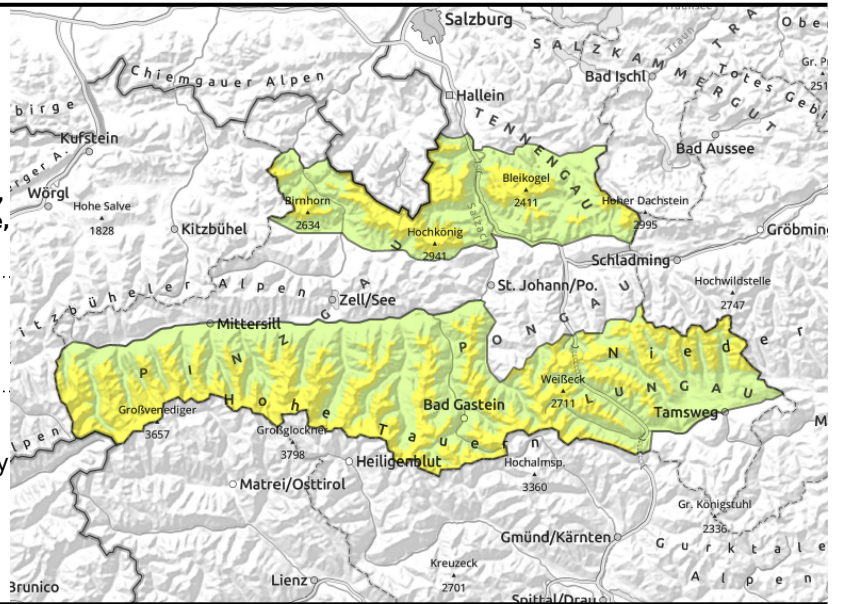


### Expositions



# Avalanche report for Thursday, 09.03.2023

Großvenedigergruppe Alpenhauptkamm,  
 Glocknergruppe Alpenhauptkamm,  
 Großvenedigergruppe Nord, Glocknergruppe Nord,  
 Goldberggruppe Nord, Goldberggruppe  
 Alpenhauptkamm, Ankogelgruppe, Muhr, Niedere  
 Tauern Alpenhauptkamm, Niedere Tauern Süd,  
 Loferer und Leoganger Steinberge, Steinernes Meer,  
 Hochkönig, Hagengebirge, Göllstock, Tennengebirge,  
 Gosaukamm



2200 m



circumvent small fresh  
 snowdrift accumulations in very  
 steep terrain

## Isolated small danger snowdrift patches

Avalanche danger above 2200m is MODERATE, below that altitude danger is LOW. Fresh, small snowdrift accumulations can trigger on very steep (>35°) N/E facing slopes above 2000 m. Danger zones occur in gullies, bowls and behind abrupt discontinuities in the terrain. They are not always visible to the naked eye in the diffuse light conditions. Caution urged wherever taking a fall is possible.

## Snowpack structure

Due to storm-strength westerly winds, small snowdrift accumulations will be generated, they will be deposited on N/E facing slopes atop a loose old snowpack surface (faceted crystals, surface hoar) and are prone to triggering in isolate cases. Mild temperatures and solar radiation will moisten the snowpack, plus diffuse light conditions on shady slopes up to 2200-2400.

## Weather

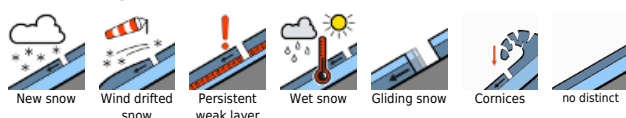
On Thursday, very stormy conditions in the mountains. In the Tauern, the foehn will collapse. In early morning clouds will swiftly move in in northern regions, bringing rainfall and snow showers (snowfall level 1200 to 1500 m) accompanied by stormy westerly winds. In exposed terrain in the Northern Alps, gusts reaching gale strength are possible. Mostly dry in the Central Alps, with dispersed clouds. As of midday in the Northern Alps, clouds will disperse somewhat, it will remain dry, visibility will be good, winds will slacken off. AT 2000 m: -2 to 0 degrees; at 3000 m: -9 to -7 degrees.

## Outlook

Snowdrift accumulations will consolidated. Avalanche danger will decrease.

Translated by Jeffrey McCabe, [www.creativtrans.com](http://www.creativtrans.com)

### Avalanche problems



### Danger ratings



### Expositions

