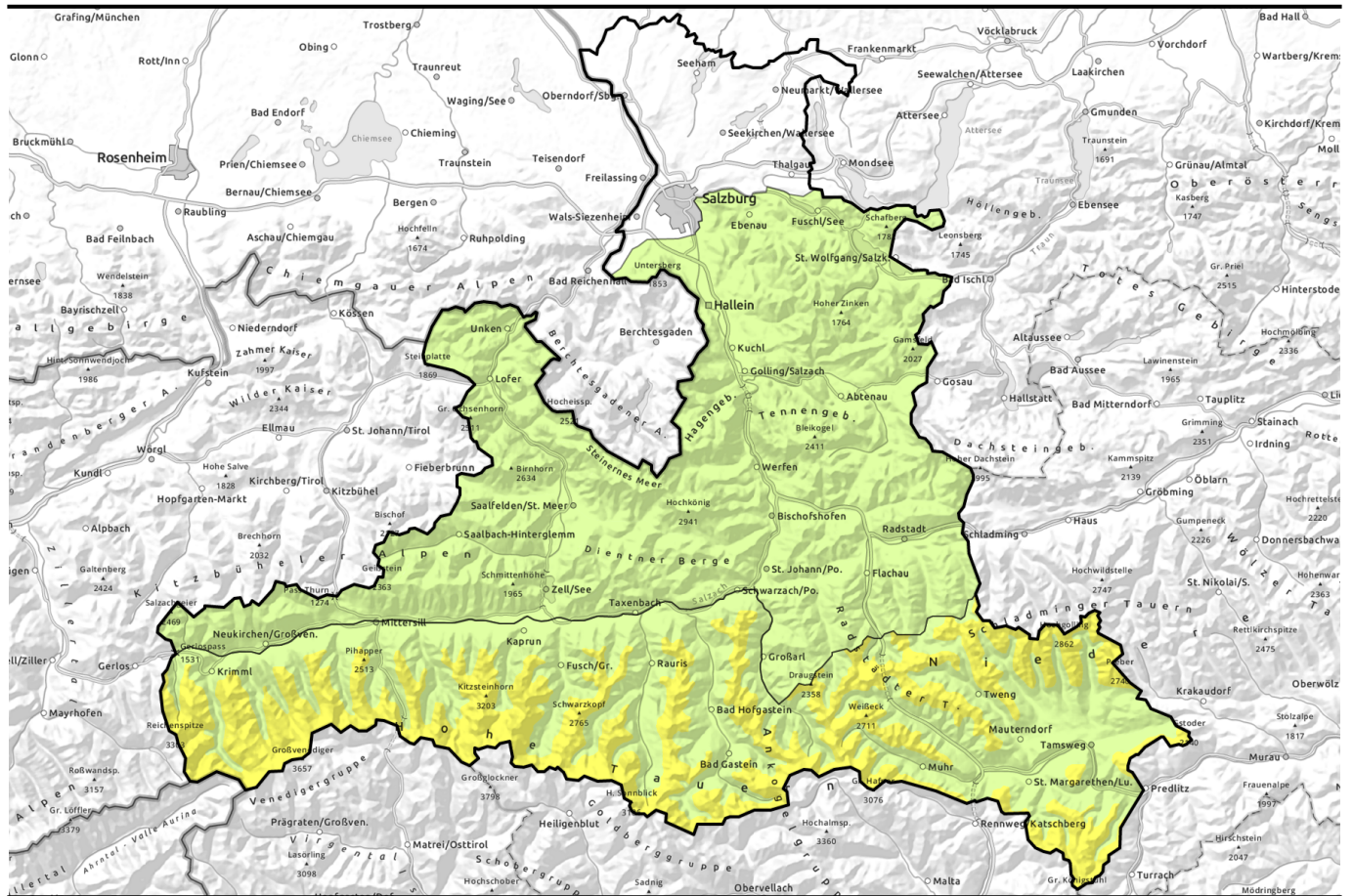


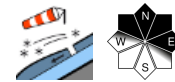
Avalanche report for Wednesday, 08.03.2023



Caution: freshly generated snowdrifts

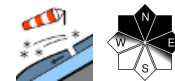


Kitzbüheler Alpen, Glemmtal, Oberpinzgauer Grasberge, Chiemgauer Alpen, Heutal, Reiteralpe, Steinernes Meer, Hochkönig, Hagengebirge, Göllstock, Loferer und Leoganger Steinberge, Dientner Grasberge, Tennengebirge, Gosaukamm, Pongauer Grasberge, Osterhorngruppe, Gamsfeldgruppe, Untersbergstock, Niedere Tauern Nord

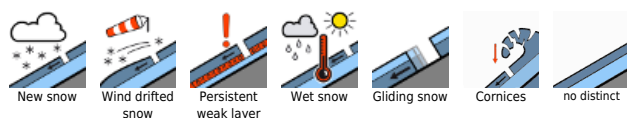


forestline

Großvenedigergruppe Alpenhauptkamm, Glocknergruppe Alpenhauptkamm, Großvenedigergruppe Nord, Glocknergruppe Nord, Goldberggruppe Nord, Goldberggruppe Alpenhauptkamm, Ankogelgruppe, Muhr, Niedere Tauern Alpenhauptkamm, Niedere Tauern Süd, Nockberge



Avalanche problems



Danger ratings

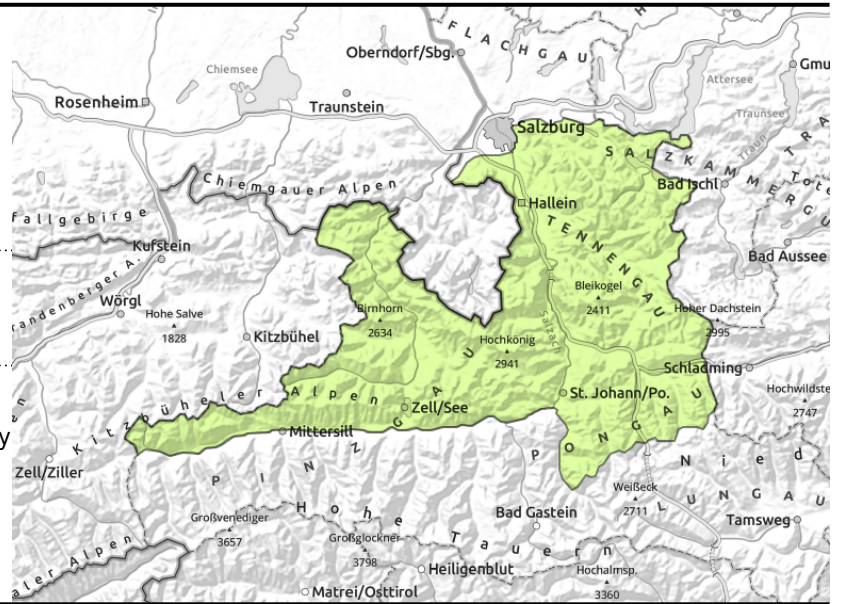


Expositions



Avalanche report for **Wednesday, 08.03.2023**

Kitzbüheler Alpen, Glemmtal, Oberpinzgauer Grasberge, Chiemgauer Alpen, Heutal, Reiteralpe, Steinernes Meer, Hochkönig, Hagengebirge, Göllstock, Loferer und Leoganger Steinberge, Dientner Grasberge, Tennengebirge, Gosaukamm, Pongauer Grasberge, Osterhorngruppe, Gamsfeldgruppe, Untersbergstock, Niedere Tauern Nord



circumvent small fresh snowdrift accumulations in very steep terrain

Isolated small danger snowdrift patches

Avalanche danger is LOW. As a result of SW winds, isolated fresh snowdrift accumulations are being formed. They are small but on very steep (>35°) N/E facing slopes above 2000 m can be easily triggered. Danger zones occur in gullies, bowls and behind abrupt discontinuities in the terrain. They are not always visible to the naked eye in the diffuse light conditions. Caution urged wherever taking a fall is possible.

Snowpack structure

Amid strong (in Tauern storm-strength) SW winds there was a few cm of fresh snow registered on Tuesday night which generated fresh snowdrift accumulations. These were deposited atop a loose old snowpack surface of faceted crystals, surface hoar on N/E facing slopes and are prone to triggering in isolated cases. Light rainfall in the afternoon will lead to a moistening of the snowpack at low and intermediate altitudes (>2000 m) particularly in the Northern Alps.

Weather

On Wednesday, foehn conditions will arrive, with high-altitude clouds. Visibility will be good, if somewhat diffuse. Near the Main Alpine Ridge dense clouds and light snowfall could hamper visibility somewhat, also in the Northern Alps in the afternoon. Some rainfall and snowfall is possible (snowfall level at 1800-2000m), but elsewhere it will remain dry. In the Northern Alps above all, moderate to strong velocity SW winds. Temperatures will rise. At midday at 2000 m: -1 degree; a 3000 m: -6 degrees.

Outlook

Thursday: stormy westerly winds. Cautions urged towards fresh, small snowdrift accumulations.

Avalanche problems



Danger ratings



Expositions



Avalanche report for **Wednesday, 08.03.2023**

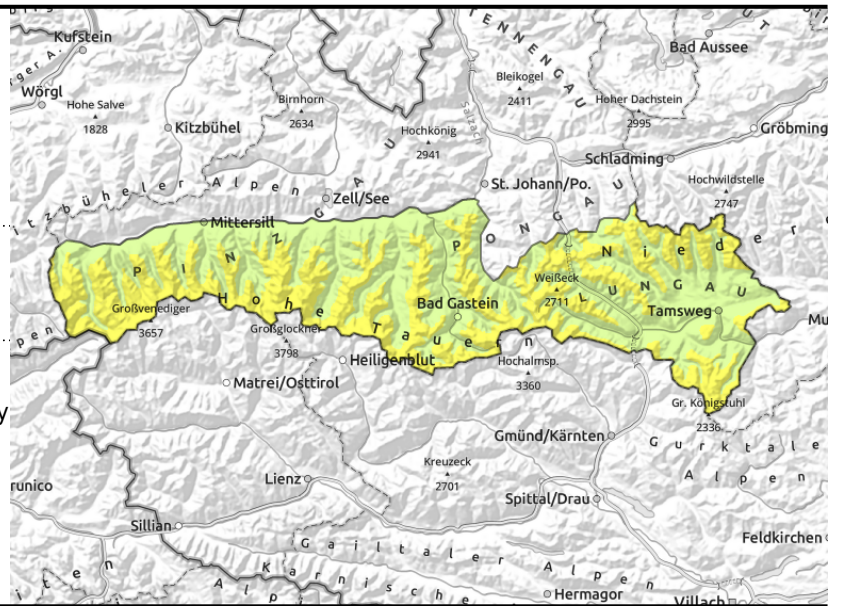
Großvenedigergruppe Alpenhauptkamm, Glocknergruppe Alpenhauptkamm, Großvenedigergruppe Nord, Glocknergruppe Nord, Goldberggruppe Nord, Goldberggruppe Alpenhauptkamm, Ankogelgruppe, Muhr, Niedere Tauern Alpenhauptkamm, Niedere Tauern Süd, Nockberge



forestline



circumvent small fresh snowdrift accumulations in very steep terrain



Isolated small danger snowdrift patches

Avalanche danger above the treeline is MODERATE, below that altitude danger is LOW. Fresh, small snowdrift accumulations can trigger on very steep (>35°) N/E facing slopes above 2000 m. Danger zones occur in gullies, bowls and behind abrupt discontinuities in the terrain. They are not always visible to the naked eye in the diffuse light conditions. Caution urged wherever taking a fall is possible.

Snowpack structure

Amid strong (in places storm-strength) SW winds there was a few cm of fresh snow registered on Tuesday night which generated fresh snowdrift accumulations. These were deposited atop a loose old snowpack surface of faceted crystals, surface hoar on N/E facing slopes and are prone to triggering in isolated cases. Weak layers inside the old snowpack (Tauern, high alpine regions) are well blanketed and unlikely to trigger.

Weather

On Wednesday, foehn conditions will arrive, with high-altitude clouds. Visibility will be good, if somewhat diffuse. Near the Main Alpine Ridge dense clouds and light snowfall could hamper visibility somewhat, also in the Northern Alps in the afternoon. Some rainfall and snowfall is possible (snowfall level at 1800-2000m), but elsewhere it will remain dry. In the Northern Alps above all, moderate to strong velocity SW winds. Temperatures will rise. At midday at 1000 m: +6 degrees; at 2000 m: -3 degree; a 3000 m: -7 degrees.

Outlook

Cautions urged towards fresh snowdrift accumulations.

Translated by Jeffrey McCabe, www.creativtrans.com

Avalanche problems



Danger ratings



Expositions

