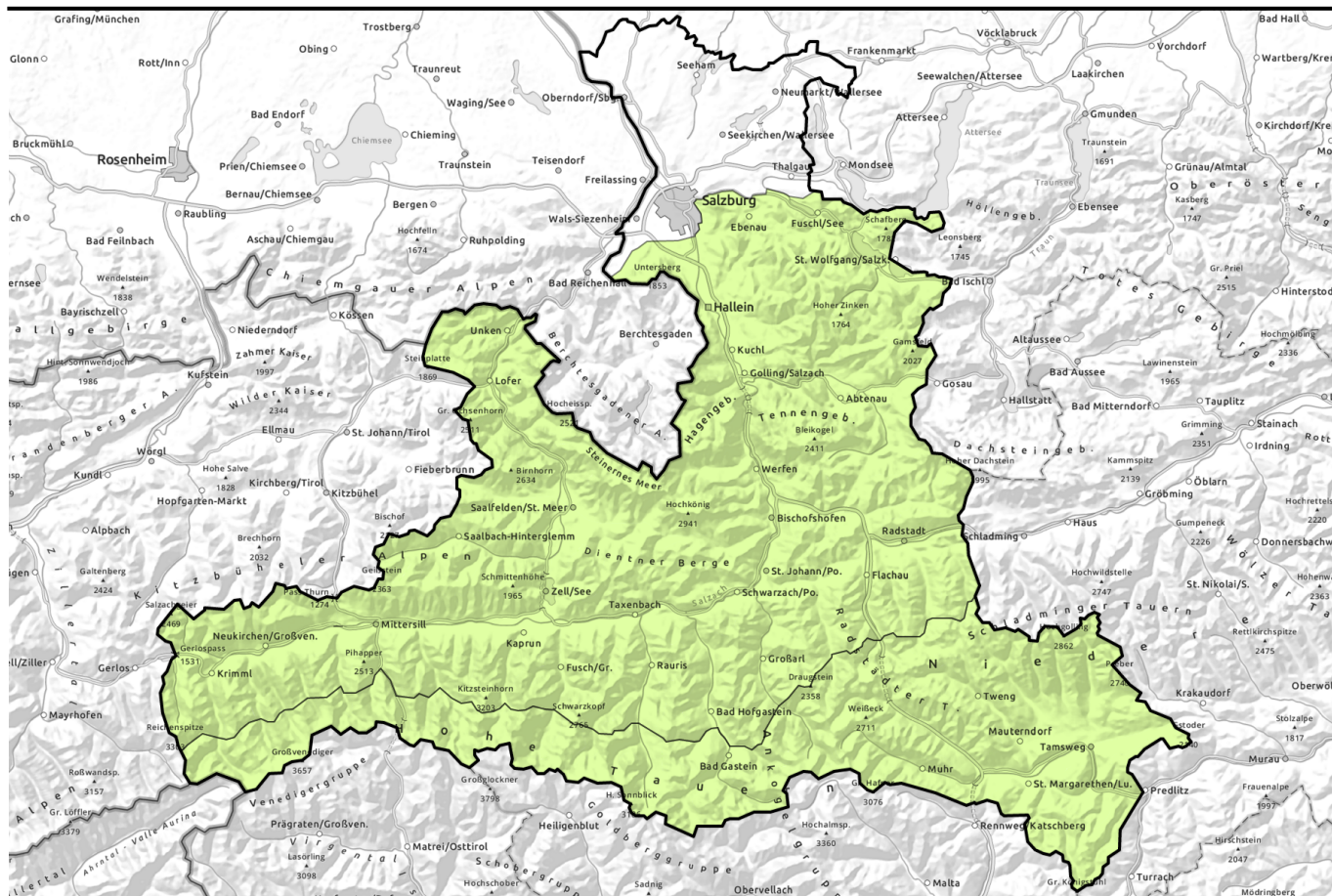


# Avalanche report for Tuesday, 07.03.2023



## Low avalanche danger



Oberpinzgauer Grasberge, Kitzbüheler Alpen, Glemmtal, Dientner Grasberge, Pongauer Grasberge, Osterhorngruppe, Gamsfeldgruppe, Untersbergstock, Chiemgauer Alpen, Heutal, Reiteralpe, Niedere Tauern Nord, Loferer und Leoganger Steinberge, Steinernes Meer, Hochkönig, Hagengebirge, Göllstock, Tennengebirge, Gosaukamm, Großvenedigergruppe Nord, Glocknergruppe Nord, Goldberggruppe Nord



Großvenedigergruppe Alpenhauptkamm, Glocknergruppe Alpenhauptkamm, Goldberggruppe Alpenhauptkamm, Niedere Tauern Alpenhauptkamm, Niedere Tauern Süd, Ankogelgruppe, Muhr, Nockberge



### Avalanche problems



### Danger ratings

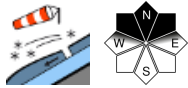
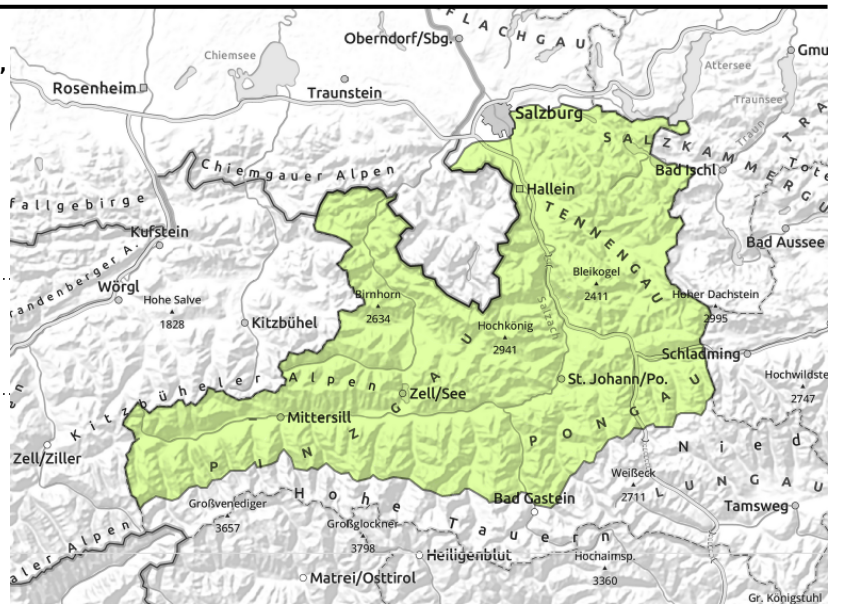


### Expositions



# Avalanche report for **Tuesday, 07.03.2023**

**Oberpinzgauer Grasberge, Kitzbüheler Alpen, Glemmtal, Dientner Grasberge, Pongauer Grasberge, Osterhorngruppe, Gamsfeldgruppe, Untersbergstock, Chiemgauer Alpen, Heutal, Reiteralpe, Niedere Tauern Nord, Loferer und Leoganger Steinberge, Steinernes Meer, Hochkönig, Hagengebirge, Göllstock, Tennengebirge, Gosaukamm, Großvenedigergruppe Nord, Glocknergruppe Nord, Goldberggruppe Nord**



## Very isolated small danger zones

Avalanche danger is LOW. Very isolated danger zones for dry-snow slab avalanches occur on very steep (>40°) shady ridgeline slopes, in gullies and bowls at high altitudes. Caution urged where falls are possible.

On extremely steep (>40°) sunny slopes, isolated small wet slides are possible.

## Snowpack structure

The snowpack is quite stable in general. Snowpack analysis and reports confirm the favourable situation.

The snowpack is highly variable. Especially at low (<1000m) and intermediate (<2000m) altitudes there is little snow on the ground. Sunny slopes at that altitude are mostly bare of snow. On shady slopes above 1800 m there are dry, powdery layers. On sunny slopes and below 1800 m there is a melt-freeze crust which will hardly soften up on Monday due to heavy cloud cover.

## Weather

North of the Tauern, visibility is usually good. In the northern ramparts of the Tauern there is moderately strong foehn wind blowing, in the grassy mountains and in the Northern Alps, winds are no disturbance. At 2000 m: -7 to -2 degrees; at 3000 m: -13 to -9 degrees.

## Outlook

On Wednesday, small fresh snowdrift accumulations will be generated amid fresh snowfall and wind. Avalanche danger will increase somewhat.

### Avalanche problems



### Danger ratings

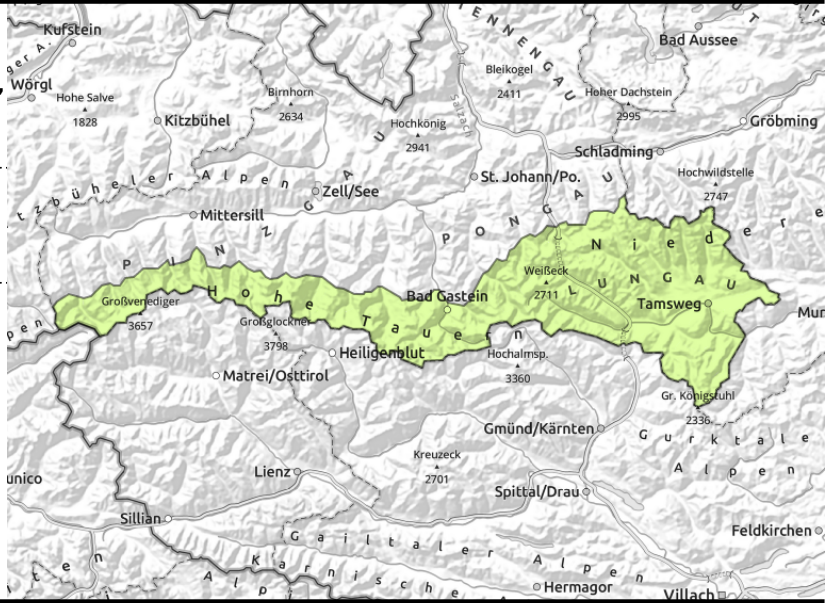


### Expositions



# Avalanche report for Tuesday, 07.03.2023

Großvenedigergruppe Alpenhauptkamm, Glocknergruppe Alpenhauptkamm, Goldberggruppe Alpenhauptkamm, Niedere Tauern Alpenhauptkamm, Niedere Tauern Süd, Ankogelgruppe, Muhr, Nockberge



avoid small fresh snowdrifts in steep terrain

## Isolated trigger-sensitive snowdrift patches

Avalanche danger is low. Fresh small snowdrift accumulations can be triggered, esp. >35° on shady slopes. Danger zones occur in gullies, bowls and behind abrupt discontinuities in the terrain and are difficult to recognize due to poor visibility. Caution urged where falls are possible.

## Snowpack structure

Due to strong velocity southerly winds starting on Tuesday afternoon, isolated small snowdrift accumulations will be generated. They occur on wind-protected shady slopes and lie deposited atop a loose old snowpack surface of faceted crystals and surface hoar - they are prone to triggering. Weak layers more deeply embedded inside the snowpack (Tauern, high alpine zones) are well blanketed and unlikely to trigger. The snowpack is generally stable.

At low (<1000m) and intermediate (<2000m) altitudes there is little snow on the ground, most slopes are bare. On shady slopes above 1800 m there is dry snow, even powder in wind-protected zones (expansively metamorphosed). On sunny slopes and in general below 1800 m a melt-freeze crust has formed on the surface which due to heavy cloud and winds in Tuesday will not soften up much.

## Weather

On Tuesday, gray skies, the peaks often shrouded in fog, poor visibility, a bit of minor snowfall. Possible sunshine at high altitudes on the Main Tauern Ridge in the morning. Moderate to strong SW winds. At 3000 m: -10 degrees; at 2000m: -4 degrees; at 1000 m: +4 degrees.

## Outlook

Wednesday: a few centimetres of fresh snow and strong-to-stormy southerly winds along the Main Ridge. Slight rise in avalanche danger.

Translated by Jeffrey McCabe, [www.creativtrans.com](http://www.creativtrans.com)

### Avalanche problems



### Danger ratings



### Expositions

