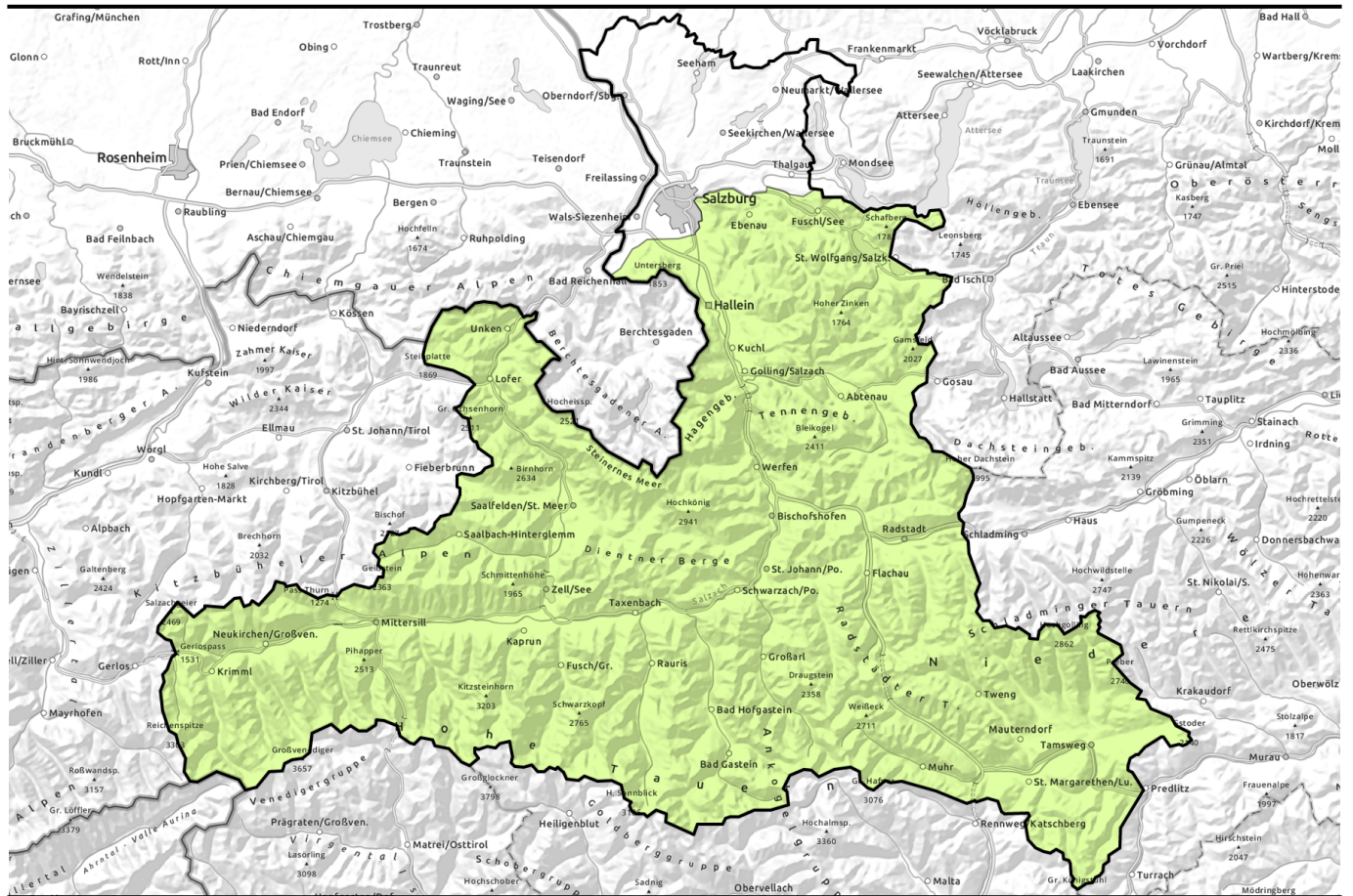


Avalanche report for Sunday, 05.03.2023



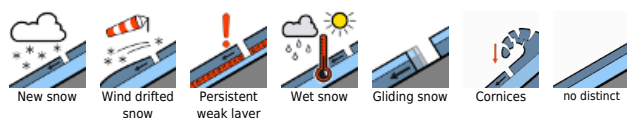
Favorable avalanche situation widespread



Nockberge, Oberpinzgauer Grasberge, Kitzbüheler Alpen, Glemmtal, Dientner Grasberge, Pongauer Grasberge, Osterhorngruppe, Gamsfeldgruppe, Untersbergstock, Chiemgauer Alpen, Heutal, Reiteralpe, Niedere Tauern Nord, Loferer und Leoganger Steinberge, Steinernes Meer, Hochkönig, Hagengebirge, Göllstock, Tennengebirge, Gosaukamm, Großvenedigergruppe Nord, Großvenedigergruppe Alpenhauptkamm, Glocknergruppe Nord, Glocknergruppe Alpenhauptkamm, Goldberggruppe Alpenhauptkamm, Goldberggruppe Nord, Niedere Tauern Alpenhauptkamm, Ankogelgruppe, Muhr, Niedere Tauern Süd



Avalanche problems



Danger ratings

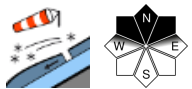
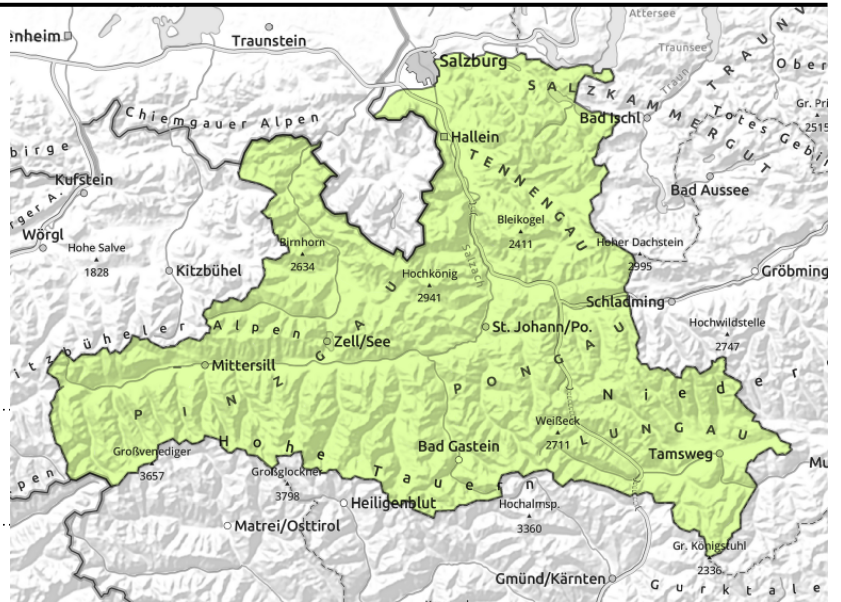


Expositions



Avalanche report for Sunday, 05.03.2023

Nockberge, Oberpinzgauer Grasberge, Kitzbüheler Alpen, Glemmtal, Dientner Grasberge, Pongauer Grasberge, Osterhorngruppe, Gamsfeldgruppe, Untersbergstock, Chiemgauer Alpen, Heutal, Reiteralpe, Niedere Tauern Nord, Loferer und Leoganger Steinberge, Steinernes Meer, Hochkönig, Hagengebirge, Göllstock, Tennengebirge, Gosaukamm, Großvenedigergruppe Nord, Großvenedigergruppe Alpenhauptkamm, Glocknergruppe Nord, Glocknergruppe Alpenhauptkamm, Goldberggruppe Alpenhauptkamm, Goldberggruppe Nord, Niedere Tauern Alpenhauptkamm, Ankogelgruppe, Muhr, Niedere Tauern Süd



avoid snowdrifts on steep slopes, high-alpine terrain esp. above discontinuities in the terrain (e.g. rocky precipices)

Very isolated small danger zones

Avalanche danger is LOW. Isolated danger zones for dry-snow slab avalanches occur on very steep (>35°) shady ridgeline slopes, in gullies and bowls at high altitudes, where even one single winter sports enthusiast can trigger an avalanche. Caution urged where falls are possible.

Snowpack structure

The snowpack is quite stable in general. Snowdrift masses often lie deposited atop loose, soft snow and can be triggered in isolated cases, on shady high altitude slopes they are prone to triggering. Weak layers more deeply embedded inside the old snowpack (Tauern, in high alpine regions) are generally well blanketed, unlikely to trigger.

The snow situation is below average, particularly at low (<1000m) and intermediate (<2000m) altitudes. Sunny slopes are mostly bare of snow. On Friday the snowpack was moistened in all aspects up to 1800-2000m. Above that altitude on shady slopes the snow is often dry and powdery, on sunny slopes a melt-freeze crust forms during the night, softens during the day.

Weather

On Sunday, many peaks in the Northern Alps and Tauern will be shrouded in low lying clouds (ceiling at 2000-2500m). Snowfall will be minor. Nockberge will have better visibility and more sun. Winds will be blowing at 30-40 km/hr. At 2000 m: -8 degrees in the Northern Alps and -5 degrees in the Nockberge, at 3000 m: -11 degrees.

Outlook

LOW avalanche danger will continue.

Translated by Jeffrey McCabe, www.creativtrans.com

Avalanche problems



Danger ratings



Expositions

