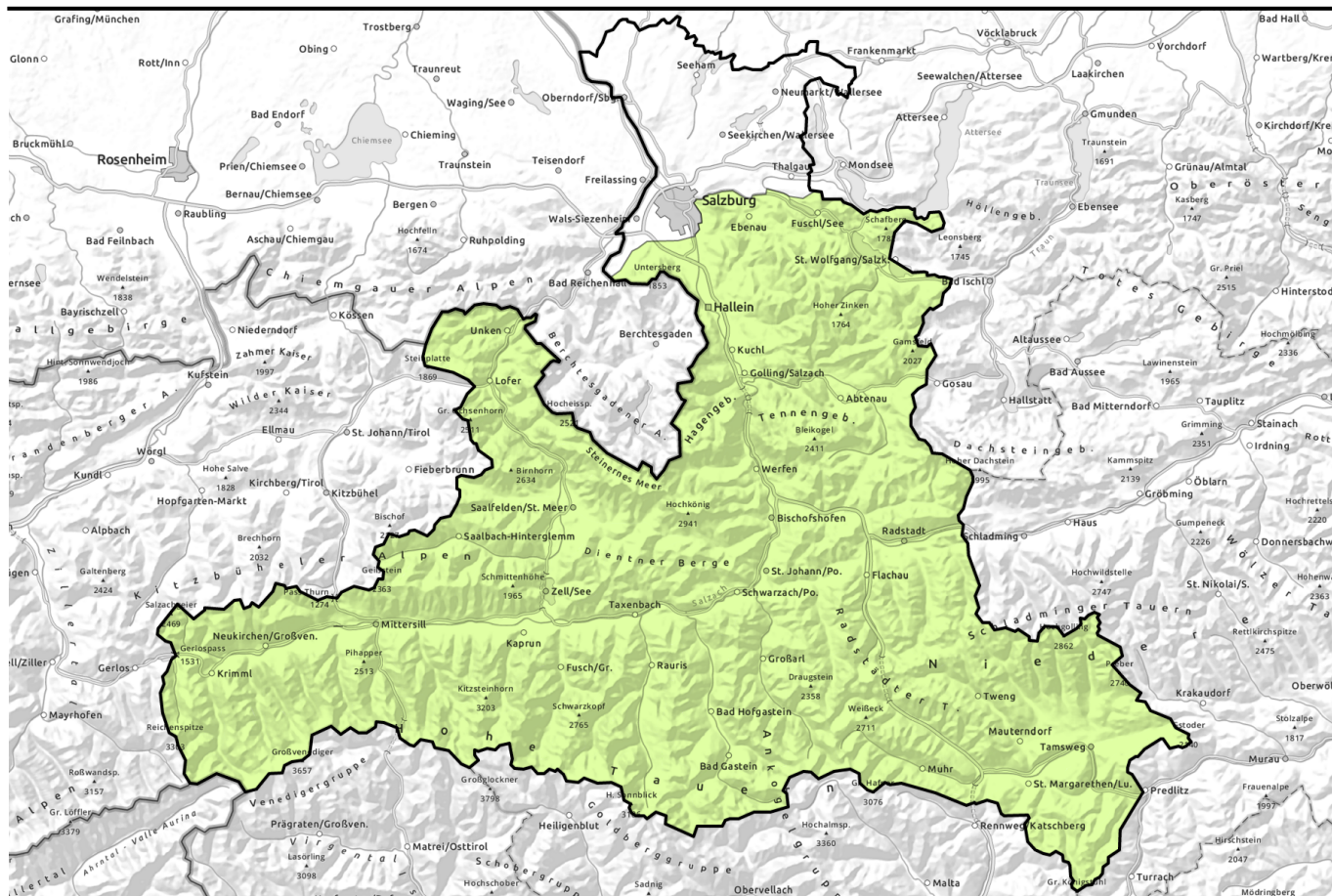


Avalanche report for Friday, 03.03.2023



Low avalanche danger widespread



Nockberge, Oberpinzgauer Grasberge, Kitzbüheler Alpen, Glemmtal, Dientner Grasberge, Pongauer Grasberge, Osterhorngruppe, Gamsfeldgruppe, Untersbergstock, Chiemgauer Alpen, Heutal, Reiteralpe, Niedere Tauern Nord, Loferer und Leoganger Steinberge, Steinernes Meer, Hochkönig, Hagengebirge, Göllstock, Tennengebirge, Gosaukamm, Großvenedigergruppe Nord, Großvenedigergruppe Alpenhauptkamm, Glocknergruppe Nord, Glocknergruppe Alpenhauptkamm, Goldberggruppe Alpenhauptkamm, Goldberggruppe Nord, Niedere Tauern Alpenhauptkamm, Ankogelgruppe, Muhr, Niedere Tauern Süd



Avalanche problems



Danger ratings

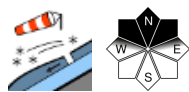
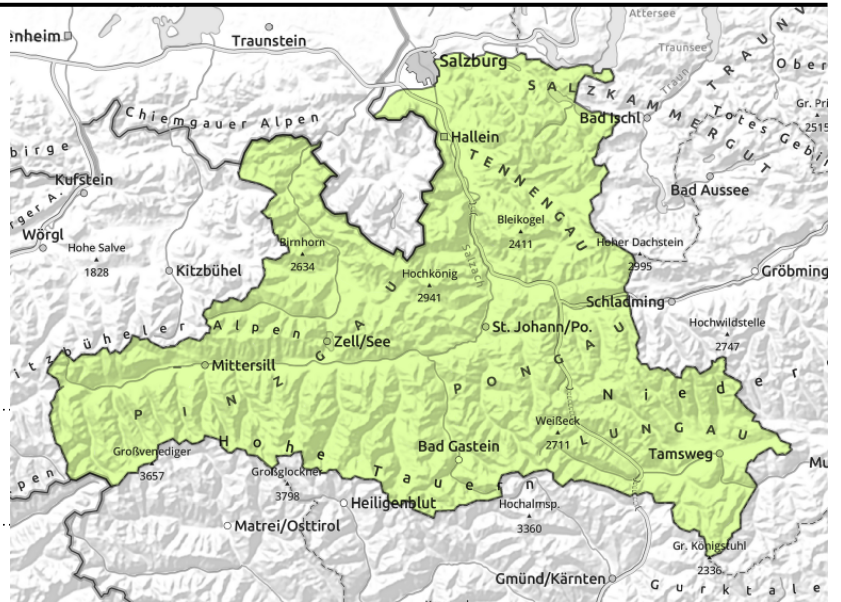


Expositions



Avalanche report for Friday, 03.03.2023

Nockberge, Oberpinzgauer Grasberge, Kitzbüheler Alpen, Glemmtal, Dientner Grasberge, Pongauer Grasberge, Osterhorngruppe, Gamsfeldgruppe, Untersbergstock, Chiemgauer Alpen, Heutal, Reiteralpe, Niedere Tauern Nord, Loferer und Leoganger Steinberge, Steinernes Meer, Hochkönig, Hagengebirge, Göllstock, Tennengebirge, Gosaukamm, Großvenedigergruppe Nord, Großvenedigergruppe Alpenhauptkamm, Glocknergruppe Nord, Glocknergruppe Alpenhauptkamm, Goldberggruppe Alpenhauptkamm, Goldberggruppe Nord, Niedere Tauern Alpenhauptkamm, Ankogelgruppe, Muhr, Niedere Tauern Süd



avoid snowdrifts on steep slopes, esp. above discontinuities in the terrain (rocky precipices)

Favourable situation, few danger zones

Avalanche danger is LOW.

Isolated small trigger-sensitive snowdrift accumulations are still found on very steep (>35°) shady ridgeline slopes, in gullies and bowls at high altitudes. Caution urged where falls are possible.

Snowpack structure

Snowdrift masses often lie deposited atop loose, soft snow and can be triggered in those places. The fresh snow from the weekend has bonded well with the old snowpack and this is well consolidated. Weak layers more deeply embedded inside the old snowpack (Tauern, in high alpine regions) are generally well blanketed, unlikely to trigger.

Wind-exposed zones are bare of snow, utterly windblown, valley floors and sunny slopes up to intermediate altitudes have little snow on the ground. Sunny slopes: a melt-freeze crust forms during the night.

Weather

On Friday, dense low-lying clouds will limit visibility, only the highest peaks will peek out of the blanket. In the morning, minor snowfall is possible (snowfall level at 1100m). Winds will shift to westerly/northwesterly, but remain light. At 2000 m: -4 degrees; at 3000 m: -9 degrees.

Outlook

Little change

Translated by Jeffrey McCabe, www.creativtrans.com

Avalanche problems



Danger ratings



Expositions

