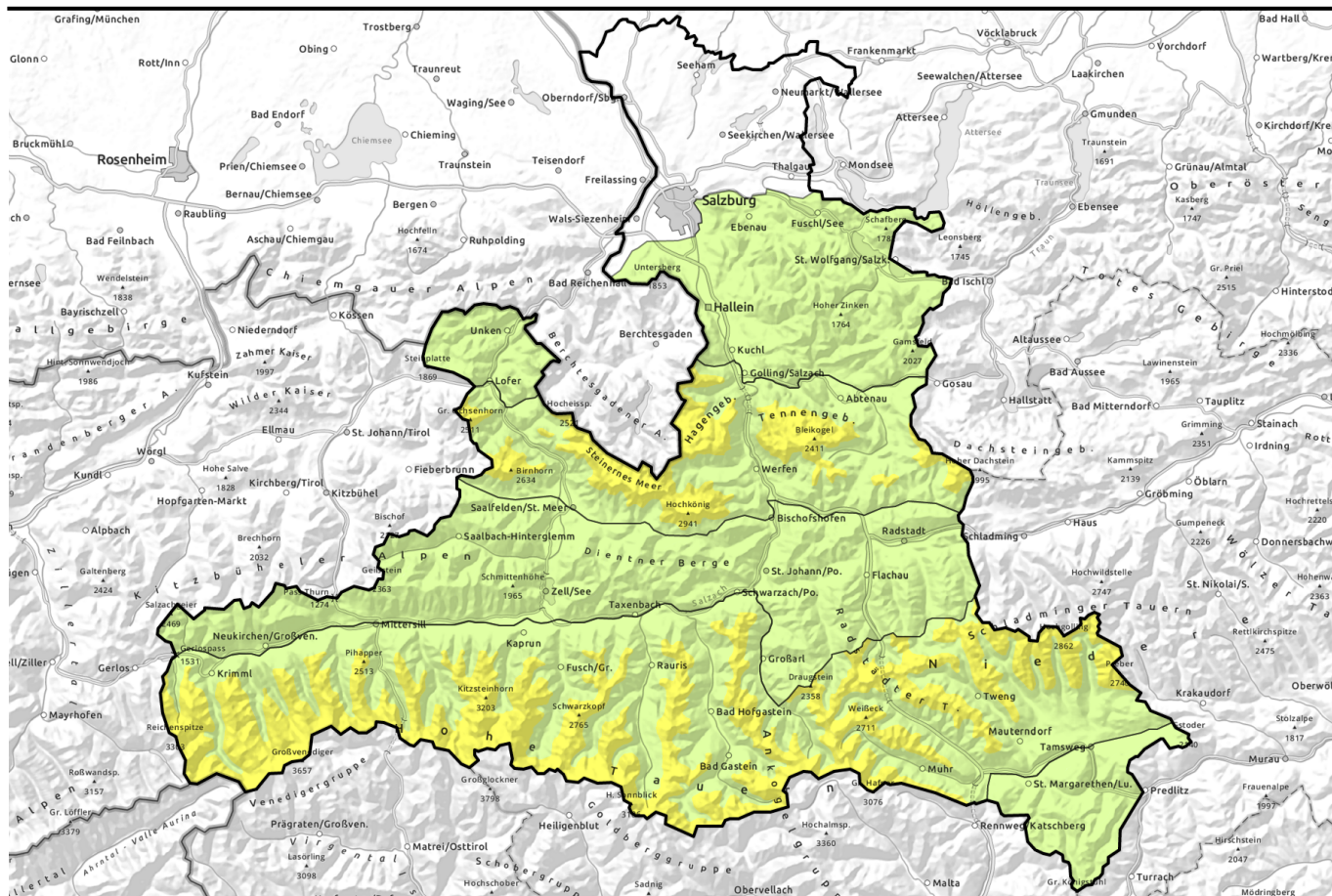


# Avalanche report for Thursday, 02.03.2023



## Caution: snowdrift accumulations



Loferer und Leoganger Steinberge, Steinernes Meer, Hochkönig, Hagengebirge, Göllstock, Tennengebirge, Gosaukamm, Niedere Tauern Süd, Ankogelgruppe, Muhr, Großvenedigergruppe Nord, Glocknergruppe Nord, Goldberggruppe Nord, Großvenedigergruppe Alpenhauptkamm, Glocknergruppe Alpenhauptkamm, Niedere Tauern Alpenhauptkamm, Goldberggruppe Alpenhauptkamm



Nockberge, Oberpinzgauer Grasberge, Kitzbüheler Alpen, Glemmtal, Dientner Grasberge, Pongauer Grasberge, Osterhorngruppe, Gamsfeldgruppe, Untersbergstock, Chiemgauer Alpen, Heutal, Reiteralpe, Niedere Tauern Nord



### Avalanche problems



### Danger ratings

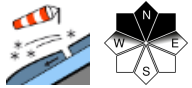
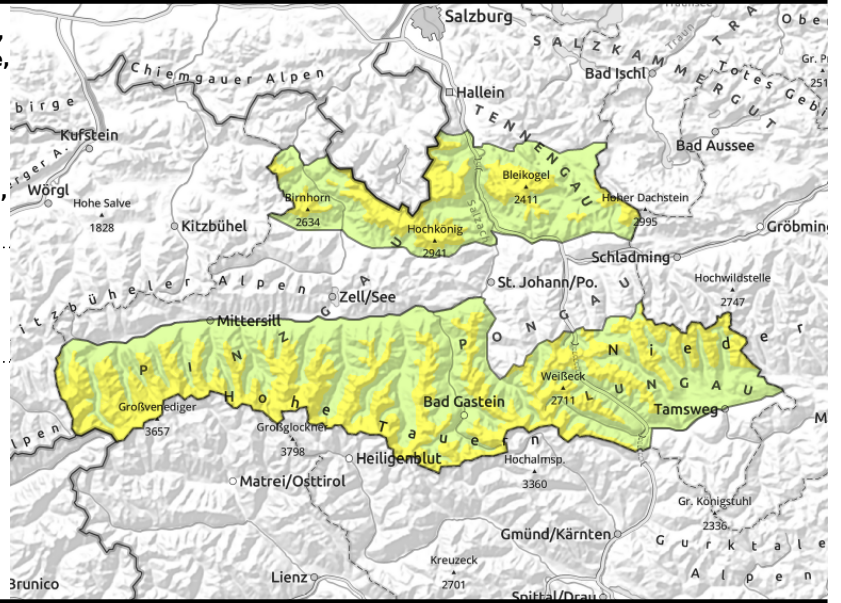


### Expositions



# Avalanche report for Thursday, 02.03.2023

Loferer und Leoganger Steinberge, Steinernes Meer, Hochkönig, Hagengebirge, Göllstock, Tennengebirge, Gosaukamm, Niedere Tauern Süd, Ankogelgruppe, Muhr, Großvenedigergruppe Nord, Glocknergruppe Nord, Goldberggruppe Nord, Großvenedigergruppe Alpenhauptkamm, Glocknergruppe Alpenhauptkamm, Niedere Tauern Alpenhauptkamm, Goldberggruppe Alpenhauptkamm



avoid snowdrifts on steep slopes, esp. above discontinuities in the terrain, esp. rocky precipices

## Main danger: mostly small trigger-sensitive snowdrift masses

Avalanche danger above 2400m is MODERATE, below that altitude danger is low.

Main danger: snowdrifts, near ridgelines, in gullies and bowls, behind discontinuities in the terrain esp. on north-facing slopes. Triggering a usually small-to-medium avalanches is possible by minimum additional loading.

Also isolated glide-snow avalanches are possible.

### Snowpack structure

The snowdrift accumulations lie deposited atop a loose, soft snowpack which is also a weak layer. Bonding of fresh snow to the old snowpack is generally adequate. Weak layers are evident deeply embedded in the snowpack (Tauern, high alpine regions). On south-facing slopes there is a thin melt-freeze crust.

### Weather

On Thursday, dense clouds will pass through, a bit of sunshine is possible but clouds will be denser further south, the summits will be veiled in fog. Sunnier phases are expected in the Northern Alps. At 2000 m: -5 in the southern regions to -1 in the northern regions, at 3000 m: -7 degrees.

### Outlook

Little change.

#### Avalanche problems



#### Danger ratings

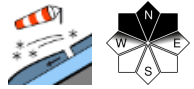
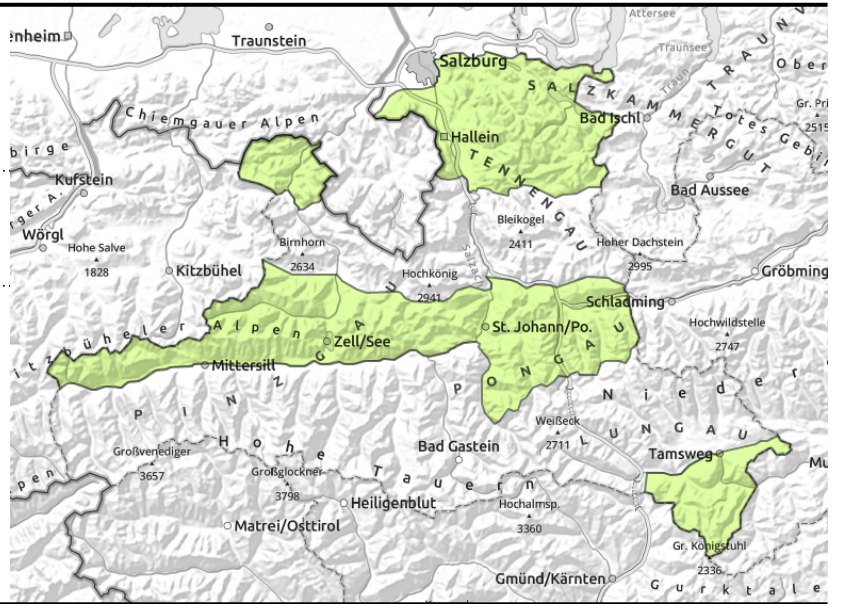


#### Expositions



# Avalanche report for Thursday, 02.03.2023

**Nockberge, Oberpinzgauer Grasberge, Kitzbüheler Alpen, Glemmtal, Dientner Grasberge, Pongauer Grasberge, Osterhorngruppe, Gamsfeldgruppe, Untersbergstock, Chiemgauer Alpen, Heutal, Reiteralpe, Niedere Tauern Nord**



avoid snowdrifts on steep slopes, esp. above discontinuities in the terrain, esp. rocky precipices

## Quite favourable situation, few danger zones

Avalanche danger is low.

Main danger: trigger-sensitive snowdrifts, near ridgelines, in gullies and bowls esp. >35°. Caution urged where falls are possible.

### Snowpack structure

The snowfall from the weekend is generally well bonded with the old snowpack, which itself is well consolidated. Wind-exposed spots are bare. In the valleys and on sunny slopes up to intermediate altitudes there is little snow on the ground.

### Weather

On Thursday, dense clouds will pass through, a bit of sunshine is possible but clouds will be denser further south, the summits will be veiled in fog. Slight foehn impact, brisk southerly winds in the Tauern. At 2000 m: -4 in the southern regions to -1 in the northern regions, at 3000 m: -7 or -6 degrees.

### Outlook

Little change

Translated by Jeffrey McCabe, [www.creativtrans.com](http://www.creativtrans.com)

#### Avalanche problems



#### Danger ratings



#### Expositions

