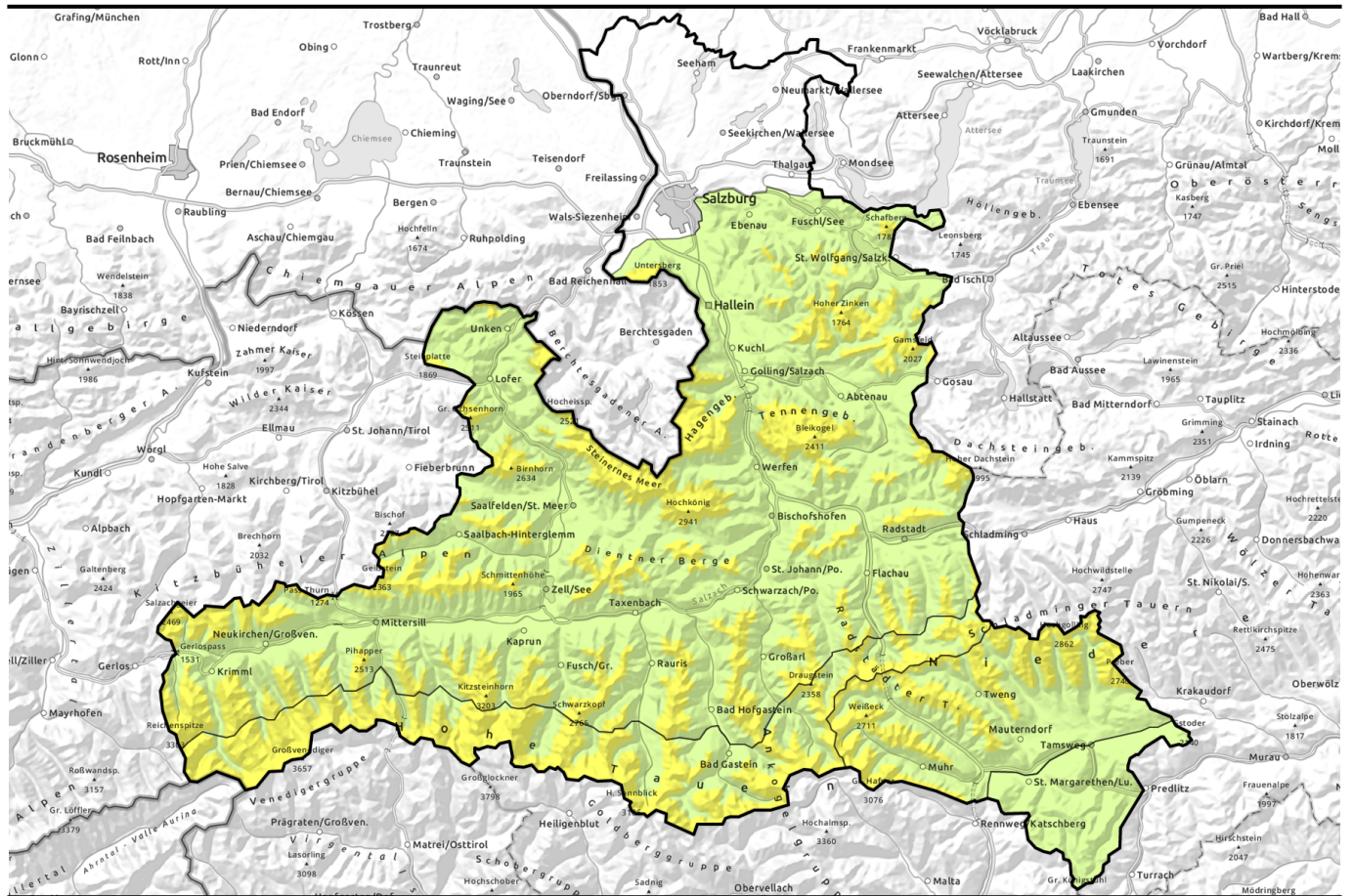











Avalanche report for Wednesday, 01.03.2023



Caution: snowdrift accumulations

- 
2000 m
Chiemgauer Alpen, Heutal, Reiteralpe, Loferer und Leoganger Steinberge, Steinernes Meer, Hochkönig, Hagengebirge, Göllstock, Tennengebirge, Gosaukamm, Osterhorngruppe, Gamsfeldgruppe, Untersbergstock, Oberpinzgauer Grasberge, Kitzbüheler Alpen, Glemmtal, Dientner Grasberge, Pongauer Grasberge, Niedere Tauern Nord, Niedere Tauern Süd, Ankogelgruppe, Muhr, Großvenedigergruppe Nord, Glocknergruppe Nord, Goldberggruppe Nord



- 
2000 m
Großvenedigergruppe Alpenhauptkamm, Glocknergruppe Alpenhauptkamm, Goldberggruppe Alpenhauptkamm, Niedere Tauern Alpenhauptkamm



- 
Nockberge



Avalanche problems



Danger ratings

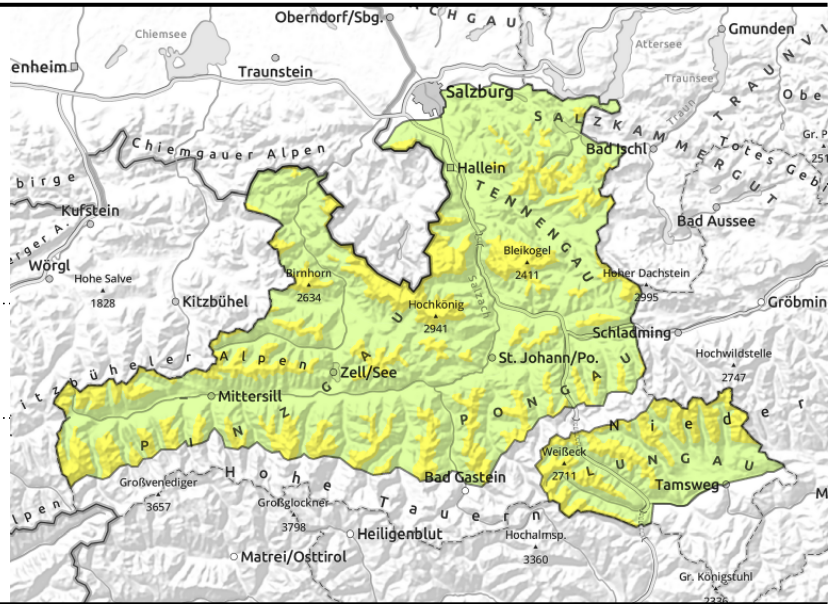


Expositions



Avalanche report for **Wednesday, 01.03.2023**

Chiemgauer Alpen, Heutal, Reiteralpe, Loferer und Leoganger Steinberge, Steinernes Meer, Hochkönig, Hagengebirge, Göllstock, Tennengebirge, Gosaukamm, Osterhorngruppe, Gamsfeldgruppe, Untersbergstock, Oberpinzgauer Grasberge, Kitzbüheler Alpen, Glemmtal, Dientner Grasberge, Pongauer Grasberge, Niedere Tauern Nord, Niedere Tauern Süd, Ankogelgruppe, Muhr, Großvenedigergruppe Nord, Glocknergruppe Nord, Goldberggruppe Nord



avoid snowdrifts in steep terrain, esp. in transitions from shallow to deep snow and from soft to hard snow

Trigger-sensitive snowdrift masses, naturally triggered loose-snow avalanches in the afternoon

Avalanche danger above 2000m is MODERATE, below that altitude danger is low. Main danger: snowdrifts, near ridgelines, in gullies and bowls in esp. on north-facing slopes. Triggering a usually small-to-medium avalanches is possible by minimum additional loading. In isolated cases, small-to-medium avalanches can be triggered inside the fresh snow (graupel) or in the melt-freeze crust of the old snow. As temperatures rise during the day, small naturally triggered loose-snow avalanches are likely in extremely steep terrain. Also isolated glide-snow avalanches are possible.

Snowpack structure

The snowdrift accumulations lie deposited atop a loose, soft snowpack which is also a weak layer. Bonding of fresh snow to the old snowpack is generally adequate. The snowpack has settled somewhat in the higher temperatures. On south-facing slopes a thin melt-freeze crust formed overnight which will soften up during the daytime hours. Up to intermediate altitudes the snowpack is often thoroughly wet.

Weather

On Wednesday, terrific weather in the mountains, very good visibility, sunshine, clouds only in the Lungau. Winds will be light to moderate from the east. At 2000 m: -1 degree; at 3000 m: -7 degrees.

Outlook

Avalanche danger will recede as the snowpack settles.

Avalanche problems



Danger ratings



Expositions

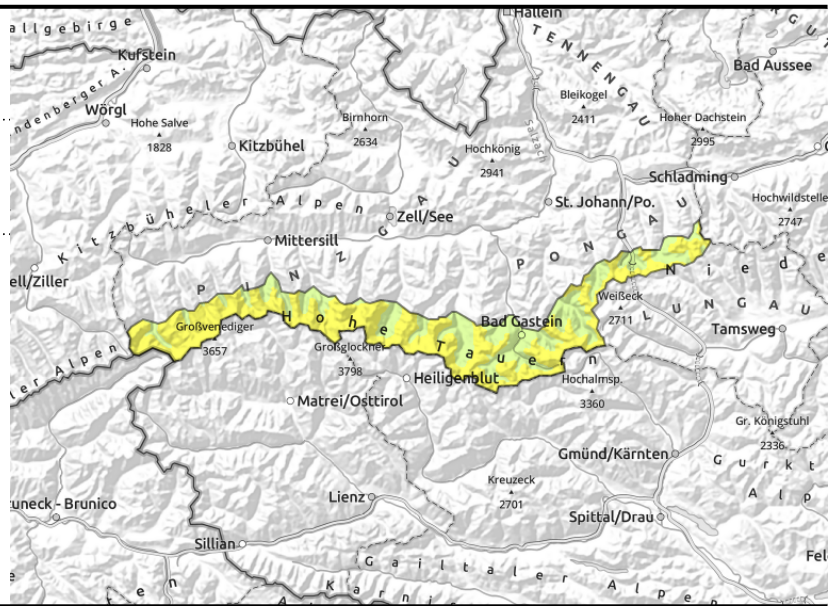


Avalanche report for **Wednesday, 01.03.2023**

Großvenedigergruppe Alpenhauptkamm, Glocknergruppe Alpenhauptkamm, Goldberggruppe Alpenhauptkamm, Niedere Tauern Alpenhauptkamm



avoid snowdrifts in steep terrain, esp. in transitions from shallow to deep snow and from soft to hard snow



Caution: snowdrift accumulations also distant from ridgelines

Avalanche danger above 2000m is MODERATE, below that altitude danger is low.

Main danger: snowdrifts. On Tuesday, southerly winds generated fresh snowdrift accumulations also distant from ridgelines on north-facing slopes which are prone to triggering. Slabs can grow to medium size.

In isolated cases, small-to-medium avalanches can be triggered inside the fresh snow (graupel) or in the melt-freeze crust of the old snow.

As temperatures rise during the day, small naturally triggered loose-snow avalanches are likely in extremely steep terrain. Also isolated glide-snow avalanches are possible.

Snowpack structure

The snowdrift accumulations lie deposited atop a loose, soft snowpack which is also a weak layer. Bonding of fresh snow to the old snowpack is generally adequate. The snowpack has settled somewhat in the higher temperatures.

On south-facing slopes a thin melt-freeze crust formed overnight which will soften up during the daytime hours. Up to intermediate altitudes the snowpack is often thoroughly wet.

Weather

Some dense cloudbanks will pass through the Main Alpine Ridge. Winds will be light to moderate from the east. At 2000 m: -1 degree; at 3000 m: -7 degrees.

Outlook

Avalanche danger will recede as the snowpack settles.

Avalanche problems



Danger ratings



Expositions

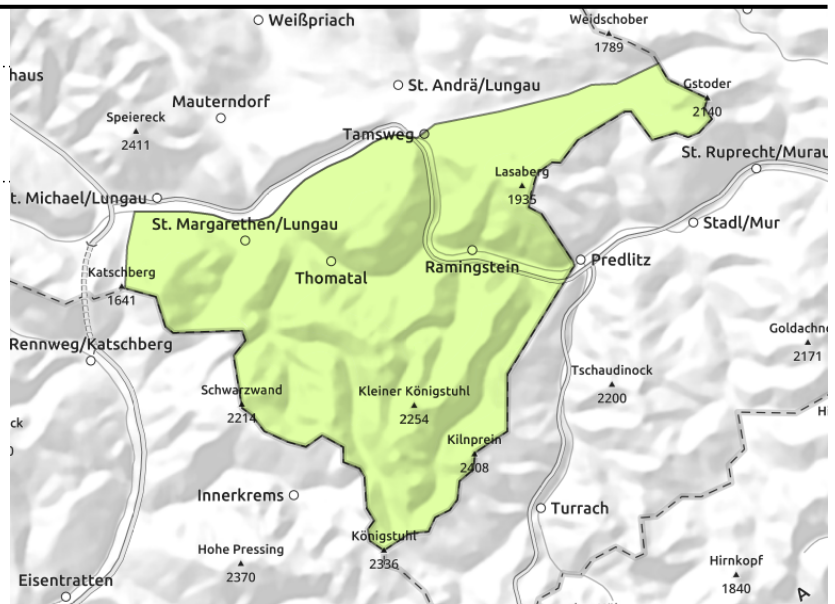


Avalanche report for **Wednesday, 01.03.2023**

Nockberge



avoid snowdrifts in steep terrain, esp. in transitions from shallow to deep snow and from soft to hard snow



Small fresh snowdrifted masses

Avalanche danger is low.

Main danger: snowdrifts, near ridgelines, in gullies and bowls esp. on north-facing slopes. Triggering a usually small-to-medium avalanches is possible by minimum additional loading.

As temperatures rise during the day, small naturally triggered loose-snow avalanches are likely in extremely steep terrain. Also isolated glide-snow avalanches are possible.

Snowpack structure

The snowfall from the weekend is generally well bonded with the old snowpack, which itself is well consolidated. Wind-exposed spots are bare. In the valleys and on sunny slopes up to intermediate altitudes there is little snow on the ground.

Weather

In the Lungau Nockberge, dense clouds will pass through, winds will be light to moderate from the east. At 2000 m: -5 degrees; at 3000 m: -7 degrees.

Outlook

Little change

Translated by Jeffrey McCabe, www.creativtrans.com

Avalanche problems



Danger ratings



Expositions

