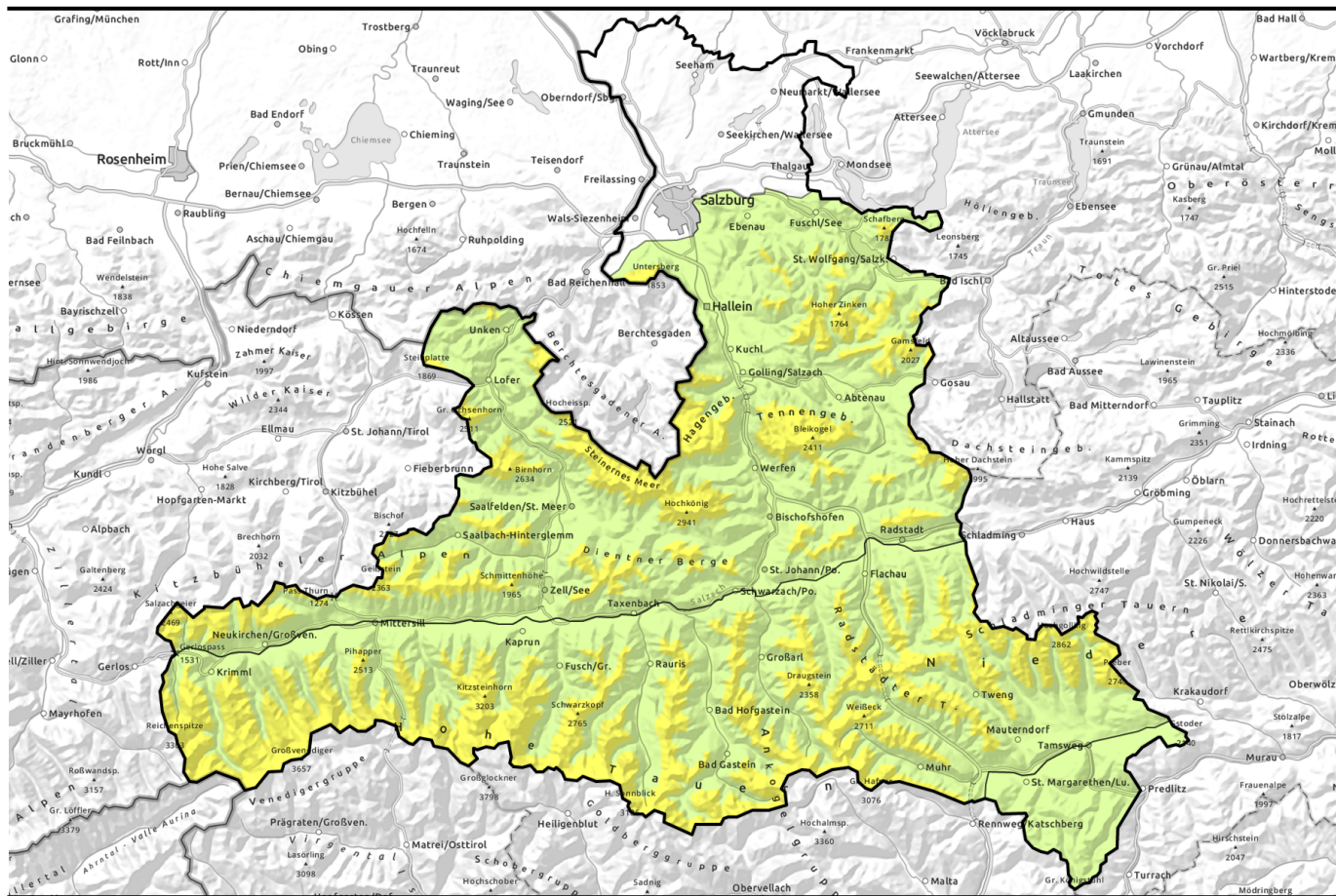


Avalanche report for Monday, 27.02.2023



Fresh snow plus arctic air

	<p>forestline Osterhorngruppe, Gamsfeldgruppe, Untersbergstock, Chiemgauer Alpen, Heutal, Reiteralpe, Loferer und Leoganger Steinberge, Steinernes Meer, Hochkönig, Hagengebirge, Göllstock, Tennengebirge, Gosaukamm, Pongauer Grasberge, Dientner Grasberge, Kitzbüheler Alpen, Glemmtal, Oberpinzgauer Grasberge</p>	
	<p>1800 m Großvenedigergruppe Nord, Glocknergruppe Nord, Großvenedigergruppe Alpenhauptkamm, Glocknergruppe Alpenhauptkamm, Goldberggruppe Alpenhauptkamm, Ankogelgruppe, Muhr, Goldberggruppe Nord, Niedere Tauern Nord, Niedere Tauern Alpenhauptkamm, Niedere Tauern Süd</p>	
	<p>Nockberge</p>	

Avalanche problems



Danger ratings

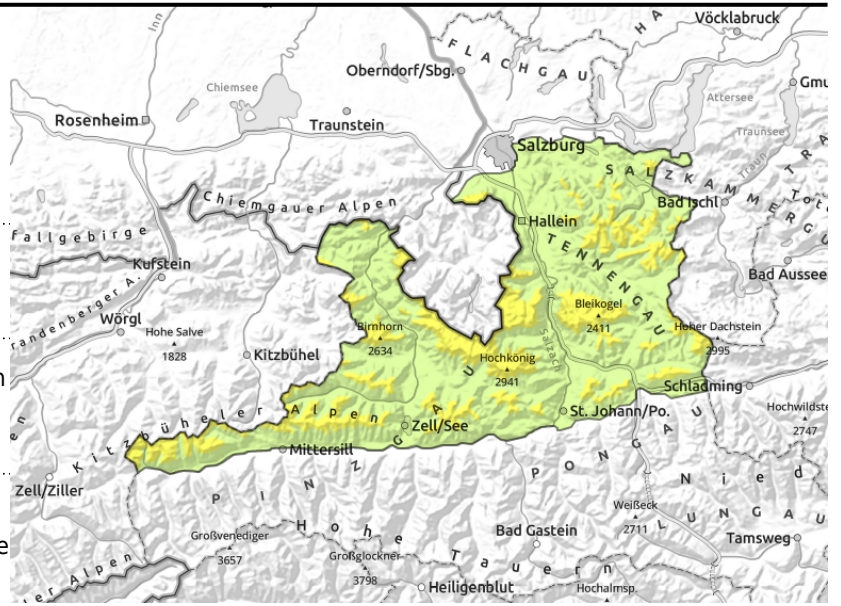


Expositions



Avalanche report for Monday, 27.02.2023

Osterhorngruppe, Gamsfeldgruppe, Untersbergstock, Chiemgauer Alpen, Heutal, Reiteralpe, Loferer und Leoganger Steinberge, Steinernes Meer, Hochkönig, Hagengebirge, Göllstock, Tennengebirge, Gosaukamm, Pongauer Grasberge, Dientner Grasberge, Kitzbüheler Alpen, Glemmtal, Oberpinzgauer Grasberge



forestline



behind abrupt discontinuities in the terrain, in gullies, steep bowls, above the treeline



potential weak layer at the melt-freeze crust and inside the fresh fallen snow

Lots of fresh snow in Northern Alps

Avalanche danger above 1500 m is MODERATE, below that altitude danger is LOW. The risks stem mostly from small-to-medium slab avalanches which can trigger even by minimum additional loading. The snowdrifts are lightly covered, no longer easy to recognize. Frequency of danger zones increases with ascending altitude. Naturally triggered small-to-medium loose-snow avalanches and isolated glide-snow avalanches are possible in extremely steep terrain.

Snowpack structure

Since Friday 20-40 cm of fresh snow has been registered widespread, as much as 50 cm on the northern Alpine rim (Osterhorn Massif). In open terrain, winds from W/NW, on Sunday from N/E intermittently transported the snow. Stability tests show no heightened likelihood to fracture, although a weak layer has developed (cold on warm) inside the mass of fresh snow. Apart from that, blanketed fresh snow is also a potential fracture point. On steep north-facing slopes there is also blanketed surface hoar. At low altitudes and on steep sunny slopes up to intermediate altitudes, the fresh snow fell on bare ground.

Weather

On Monday the peaks will be veiled in clouds and fog, visibility will be severely limited, but next-to-no snowfall is anticipated. The E/N winds will be light, no longer transport the snow. AT 2000 m: -13 degrees; at 3000 m: -17 degrees.

Outlook

The fresh snow will settle noticeably due to solar radiation and higher temperatures on Tuesday. Mostly favourable conditions, despite local danger zones.

Avalanche problems



Danger ratings

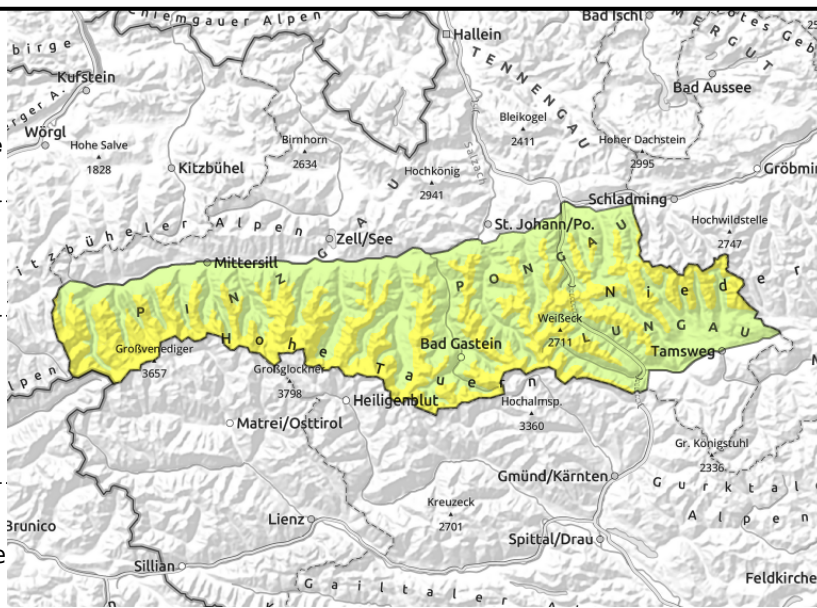
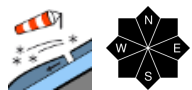


Expositions

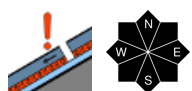


Avalanche report for Monday, 27.02.2023

Großvenedigergruppe Nord, Glocknergruppe Nord, Großvenedigergruppe Alpenhauptkamm, Glocknergruppe Alpenhauptkamm, Goldberggruppe Alpenhauptkamm, Ankogelgruppe, Muhr, Goldberggruppe Nord, Niedere Tauern Nord, Niedere Tauern Alpenhauptkamm, Niedere Tauern Süd

near to and distant from ridgelines, behind abrupt discontinuities in the terrain, in gullies and bowls



potential weak layer at the melt-freeze crust and inside the fresh fallen snow (graupel)

Snowdrifts due to W/NE winds

Snowpack structure

Avalanche danger above 1800 m is MODERATE, below that altitude danger is LOW. Risks stem from small, isolatedly medium slab avalanches which can be triggered in a few places even be minimum additional loading. They occur mostly in steep ridgeline terrain, in steep gullies and bowls, behind abrupt discontinuities in the terrain in all aspects. Frequency of danger zones increases with ascending altitude. Naturally triggered loose-snow and isolated glide-snow avalanches are possible in extremely steep terrain.

Weather

On Monday the peaks will be veiled in clouds and fog, visibility will be severely limited, but next-to-no snowfall is anticipated. The E/N winds will be light, no longer transport the snow. AT 2000 m: -13 degrees; at 3000 m: -17 degrees.

Outlook

The fresh snow will settle noticeably due to solar radiation and higher temperatures on Tuesday. Mostly favourable conditions, despite local danger zones.

Avalanche problems



Danger ratings



Expositions

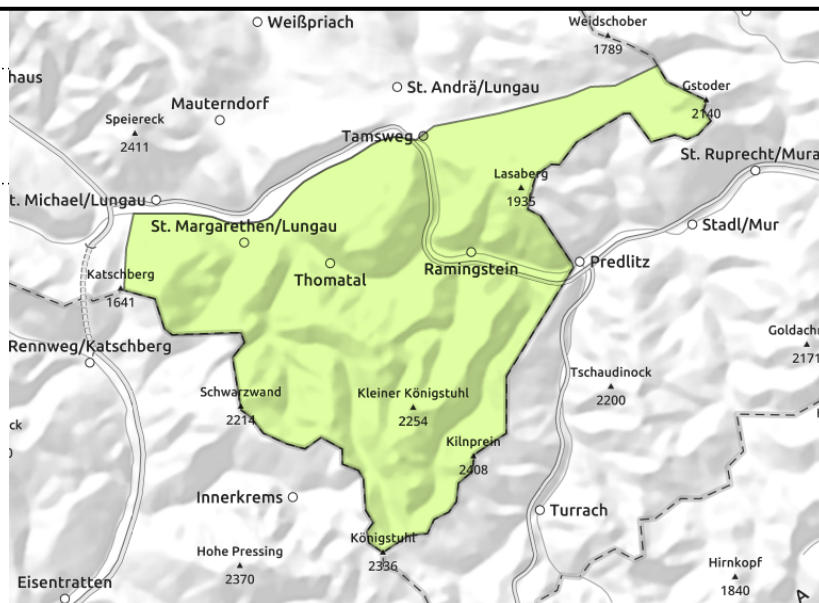


Avalanche report for Monday, 27.02.2023

Nockberge



shallow, small snowdrift accumulations



Overcast skies, winds will not disturb

Avalanche danger is LOW, only few danger zones for slab releases, particularly on extremely steep slopes, in gullies and bowls and on shady high-altitude slopes. Isolated small-to-medium glide-snow avalanches can trigger naturally in extremely steep grassy terrain.

Snowpack structure

Strong to stormy NE/NW winds have generated new snowdrift accumulations. Crests and ridges are often hard and utterly windblown. In wind-protected terrain the 10 cm of fresh snow is well bonded with the springtime snowpack surface, often melt-freeze encrusted. The layers inside the snowpack are well bonded with each other, although ice films are embedded. The only weak layer lies at ground level. At valley floor and on sunny slopes up to intermediate altitudes there is little snow on the ground.

Weather

On Monday the peaks will be veiled in clouds and fog, visibility will be severely limited, but next-to-no snowfall is anticipated. The E/N winds will be light, no longer transport the snow. AT 2000 m: -13 degrees.

Outlook

No change expected.

Translated by Jeffrey McCabe, www.creativtrans.com

Avalanche problems



Danger ratings



Expositions

