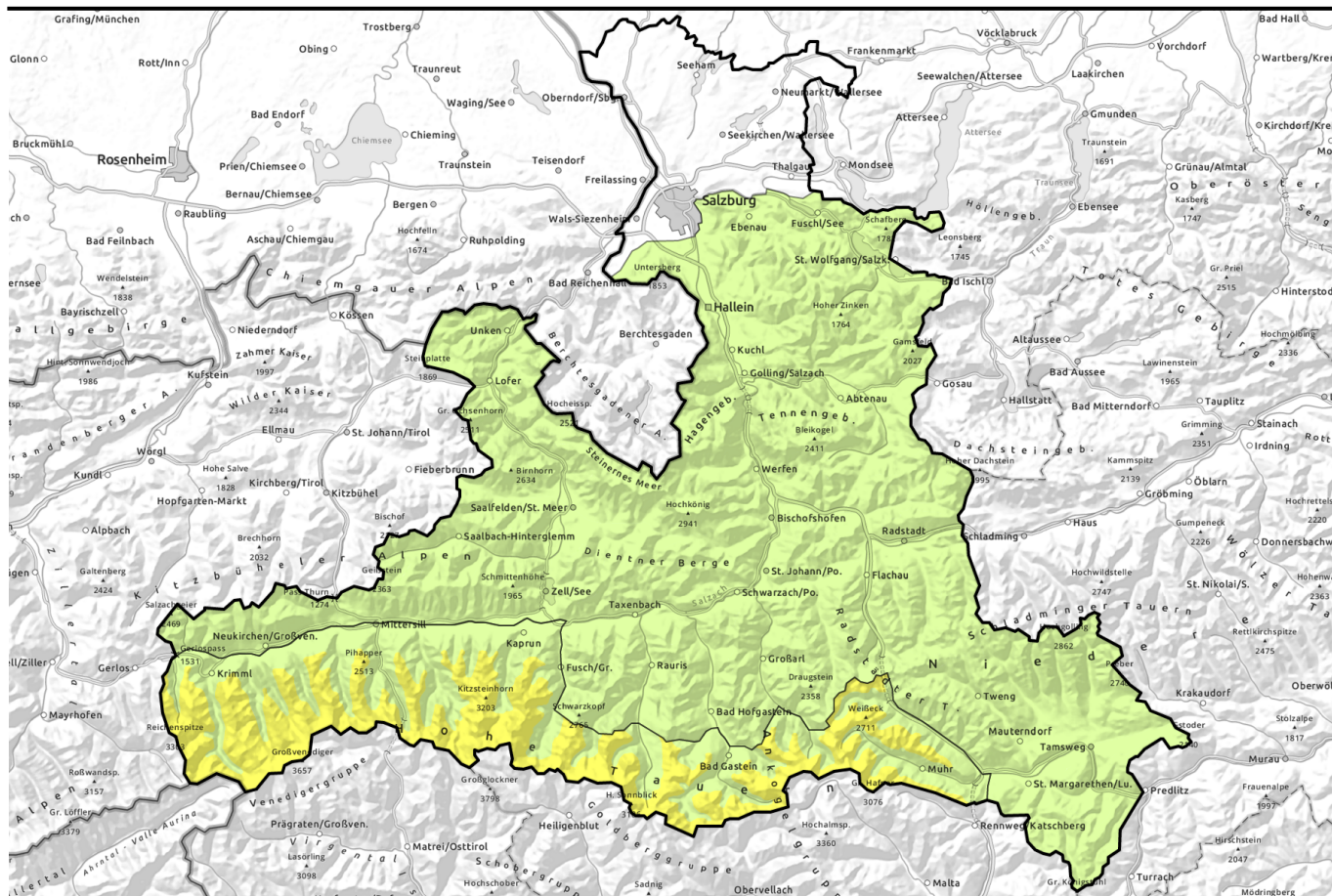


# Avalanche report for Friday, 24.02.2023



## Isolated glide-snow avalanches



Osterhorngruppe, Gamsfeldgruppe, Untersbergstock, Chiemgauer Alpen, Heutal, Reiteralpe, Loferer und Leoganger Steinberge, Steinernes Meer, Hochkönig, Hagengebirge, Göllstock, Tennengebirge, Gosaukamm, Pongauer Grasberge, Niedere Tauern Nord, Niedere Tauern Alpenhauptkamm, Niedere Tauern Süd, Nockberge, Dientner Grasberge, Kitzbüheler Alpen, Glemmtal, Oberpinzgauer Grasberge, Goldberggruppe Nord



2500 m

Großvenedigergruppe Nord, Glocknergruppe Nord, Großvenedigergruppe Alpenhauptkamm, Glocknergruppe Alpenhauptkamm, Goldberggruppe Alpenhauptkamm, Ankogelgruppe, Muhr



### Avalanche problems



### Danger ratings

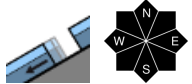
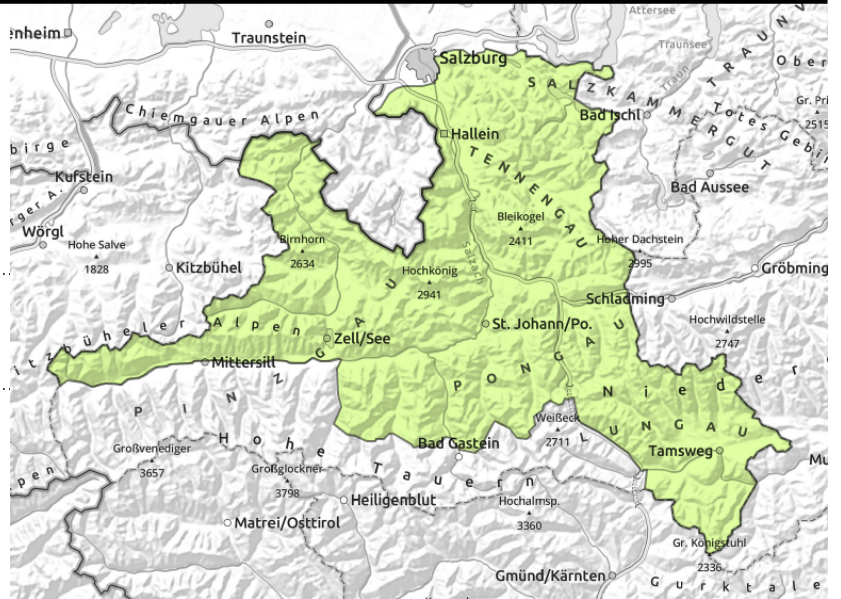


### Expositions



# Avalanche report for Friday, 24.02.2023

Osterhorngruppe, Gamsfeldgruppe, Untersbergstock, Chiemgauer Alpen, Heutal, Reiteralpe, Loferer und Leoganger Steinberge, Steinernes Meer, Hochkönig, Hagengebirge, Göllstock, Tennengebirge, Gosaukamm, Pongauer Grasberge, Niedere Tauern Nord, Niedere Tauern Alpenhauptkamm, Niedere Tauern Süd, Nockberge, Dientner Grasberge, Kitzbüheler Alpen, Glemmtal, Oberpinzgauer Grasberge, Goldberggruppe Nord



avoid zones below glide cracks

## Overall little snow for this juncture of the season

Avalanche danger is LOW.

Isolated small-to-medium glide-snow avalanches occur. Circumvent terrain below glide cracks, extremely steep grassy slopes and smooth rock plates.

A dry slab is unlikely to trigger, if at all, then above 2200m on very steep north-facing slopes by large additional loading.

### Snowpack structure

The snowpack layers are well bonded with each other, although in places there is an ice film lodged between the layers. The only weak layer is found near ground level. At low altitudes there is hardly any snow on the ground. At intermediate altitudes the slopes are becoming bare of snow.

### Weather

On Friday, intermittent sunshine amid scattered clouds. Visibility will deteriorate towards evening, rainfall/snowfall will set in. Snowfall level will lie at 1600 m. At high altitudes, brisk westerly winds. At 2000m: -1 degree.

### Outlook

The avalanche situation will change on the weekend. Winter is returning for a brief spell, with freshly generated snowdrift accumulations.

#### Avalanche problems



#### Danger ratings

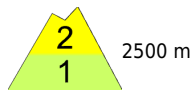


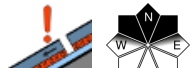
#### Expositions

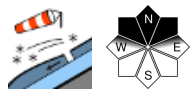


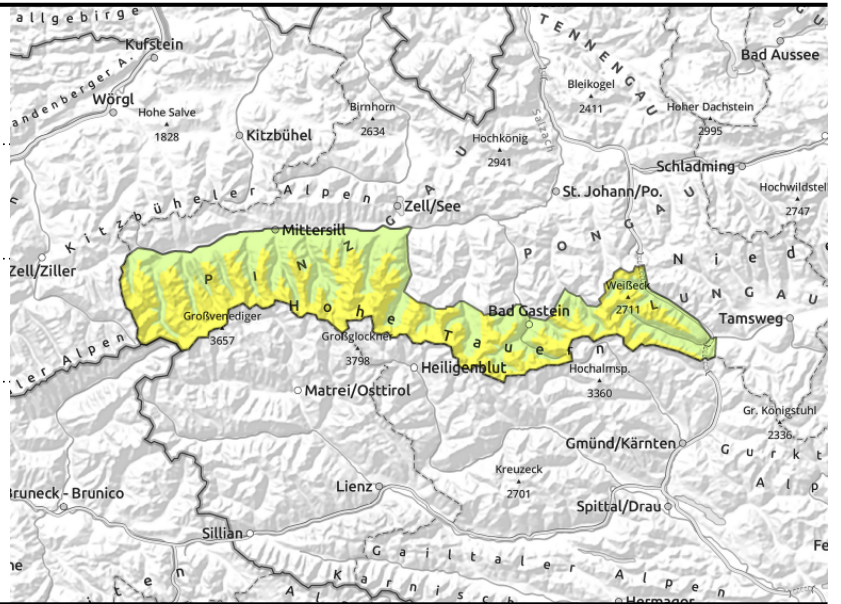
# Avalanche report for Friday, 24.02.2023

**Großvenedigergruppe Nord, Glocknergruppe Nord, Großvenedigergruppe Alpenhauptkamm, Glocknergruppe Alpenhauptkamm, Goldberggruppe Alpenhauptkamm, Ankogelgruppe, Muhr**



 isolated, shady slopes, at high and high-alpine altitudes

 above 2500m, near ridgelines, due to southerly winds



## Southerly winds can generate fresh snowdrifts in high alpine zones

Avalanche danger is MODERATE above 2500 m, below that altitude danger is LOW.

Brisk southerly winds can generate fresh snowdrift accumulations, mostly shallow but caution is necessary in very steep ridgeline terrain in shady north-facing slopes. Precisely these are the zones where a persistent weak layer still threatens.

Isolated small-to-medium glide-snow avalanches will occur. Avoid glide cracks, extremely steep grassy slopes and smooth rock plates.

### Snowpack structure

The snowpack layers are well bonded with each other, deeply embedded weak layers in the old snow (faceted crystals, bordering on melt-freeze crusts) are unlikely to trigger. Most weak layers occur in transitions to ground level. At low altitudes there is hardly any snow on the ground. At intermediate altitudes the slopes are becoming bare. At high and high-alpine altitudes, melt-freeze crusts dominate, a bit of powder is still to be found.

### Weather

On Friday, intermittent sunshine amid scattered clouds. Visibility will deteriorate towards evening, rainfall/snowfall will set in. Snowfall level will lie at 1600 m. At high altitudes, brisk westerly winds. At 2000m: -1 degree; at 3000 m: -7 degrees.

### Outlook

The avalanche situation will change on the weekend. Winter is returning for a brief spell, with freshly generated snowdrift accumulations.

Translated by Jeffrey McCabe, [www.creativtrans.com](http://www.creativtrans.com)

#### Avalanche problems



#### Danger ratings



#### Expositions

