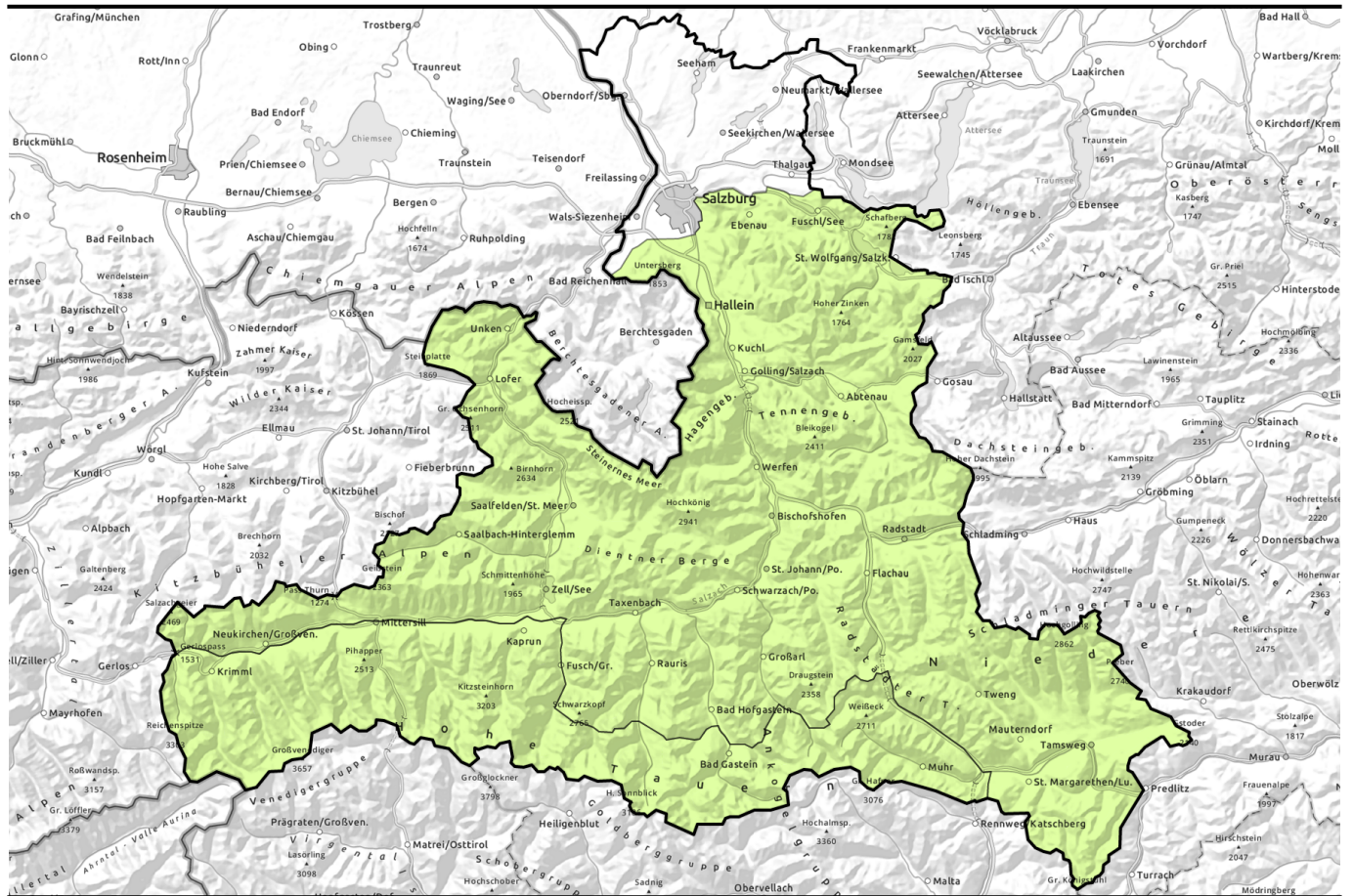


# Avalanche report for Thursday, 23.02.2023



## Isolated glide-snow avalanches



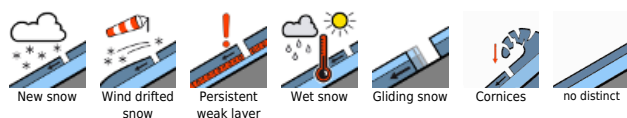
Osterhorngruppe, Gamsfeldgruppe, Untersbergstock, Chiemgauer Alpen, Heutal, Reiteralpe, Loferer und Leoganger Steinberge, Steinernes Meer, Hochkönig, Hagengebirge, Göllstock, Tennengebirge, Gosaukamm, Pongauer Grasberge, Niedere Tauern Nord, Niedere Tauern Alpenhauptkamm, Niedere Tauern Süd, Nockberge, Dientner Grasberge, Kitzbüheler Alpen, Glemmtal, Oberpinzgauer Grasberge, Goldberggruppe Nord



Großvenedigergruppe Nord, Glocknergruppe Nord, Großvenedigergruppe Alpenhauptkamm, Glocknergruppe Alpenhauptkamm, Goldberggruppe Alpenhauptkamm, Ankogelgruppe, Muhr



### Avalanche problems



### Danger ratings

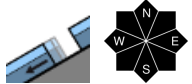
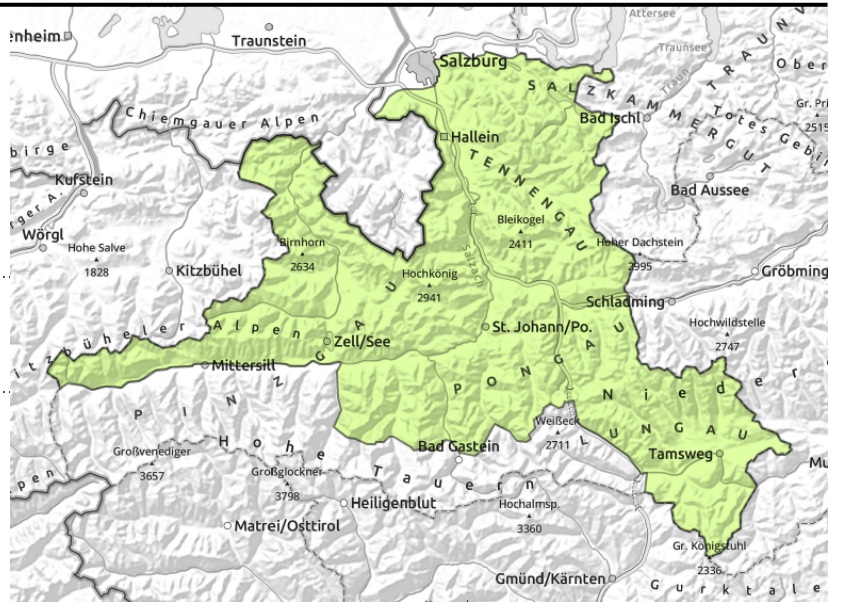


### Expositions



# Avalanche report for Thursday, 23.02.2023

Osterhorngruppe, Gamsfeldgruppe, Untersbergstock, Chiemgauer Alpen, Heutal, Reiteralpe, Loferer und Leoganger Steinberge, Steinernes Meer, Hochkönig, Hagengebirge, Göllstock, Tennengebirge, Gosaukamm, Pongauer Grasberge, Niedere Tauern Nord, Niedere Tauern Alpenhauptkamm, Niedere Tauern Süd, Nockberge, Dientner Grasberge, Kitzbüheler Alpen, Glemmtal, Oberpinzgauer Grasberge, Goldberggruppe Nord



avoid zones below glide cracks

## Overall little snow for this juncture of the season

Avalanche danger is LOW.

Isolated small-to-medium glide-snow avalanches occur. Circumvent terrain below glide cracks, extremely steep grassy slopes and smooth rock plates.

A dry slab is unlikely to trigger, if at all, then above 2200m on very steep north-facing slopes by large additional loading.

### Snowpack structure

The snowpack layers are well bonded with each other, although in places there is an ice film lodged between the layers. The only weak layer is found near ground level. At low altitudes there is hardly any snow on the ground. At intermediate altitudes the slopes are becoming bare of snow.

### Weather

On Thursday, only occasional sunshine, higher altitudes will be shrouded in clouds and fog. Minor rainfall or snowfall is possible, the snowfall level will lie at 1500 m. Winds will be light at all altitudes. At 2000 m: -1 degree.

### Outlook

The avalanche situation will change on the weekend. Winter is returning for a brief spell.

#### Avalanche problems



#### Danger ratings

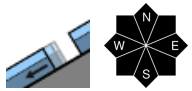
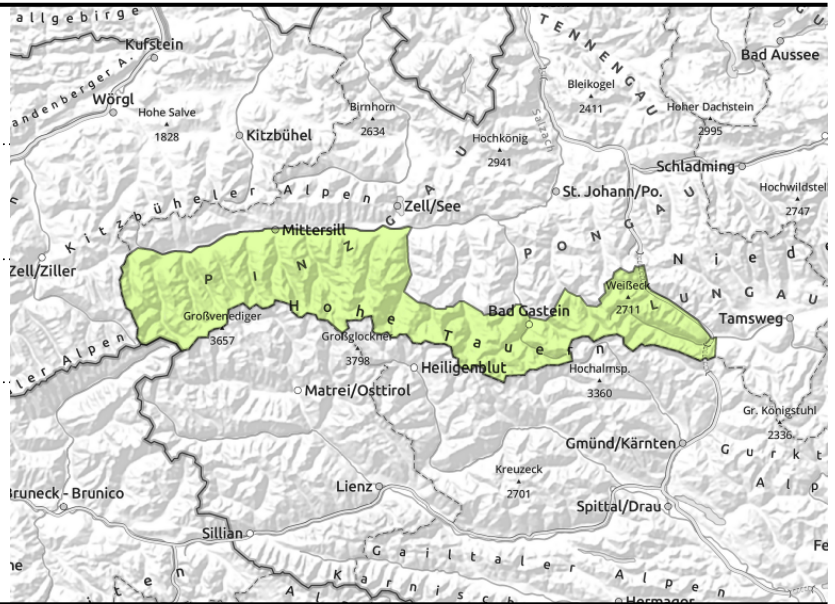


#### Expositions

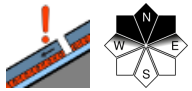


# Avalanche report for Thursday, 23.02.2023

Großvenedigergruppe Nord, Glocknergruppe Nord,  
Großvenedigergruppe Alpenhauptkamm,  
Glocknergruppe Alpenhauptkamm, Goldberggruppe  
Alpenhauptkamm, Ankogelgruppe, Muhr



avoid zones below glide cracks



vereinzelt, schattseitig, in hohen und hochalpinen Lagen

## Danger of falling on icy surfaces

Avalanche danger is LOW.

Isolated small-to-medium glide-snow avalanches occur. Circumvent terrain below glide cracks, extremely steep grassy slopes and smooth rock plates.

A dry slab is unlikely to trigger, if at all, then above 2200m on very steep north-facing slopes by large additional loading. A release (from a fall or stomping) can reach medium size.

## Snowpack structure

The snowpack layers are well bonded with each other, although in places there is an ice film lodged between the layers. The only weak layer is found near ground level. At low altitudes there is hardly any snow on the ground. At high altitudes, melt-freeze crusts dominate. In some places the surface is very smooth - beware of taking a fall.

## Weather

On Thursday, only occasional sunshine, higher altitudes will be shrouded in clouds and fog. Minor rainfall or snowfall is possible, the snowfall level will lie at 1500 m. Winds will be light at all altitudes. At 2000 m: -1 degree, at 3000 m: -7 degrees.

## Outlook

The avalanche situation will change on the weekend. Winter is returning for a brief spell.

Translated by Jeffrey McCabe, [www.creativtrans.com](http://www.creativtrans.com)

### Avalanche problems



### Danger ratings



### Expositions

