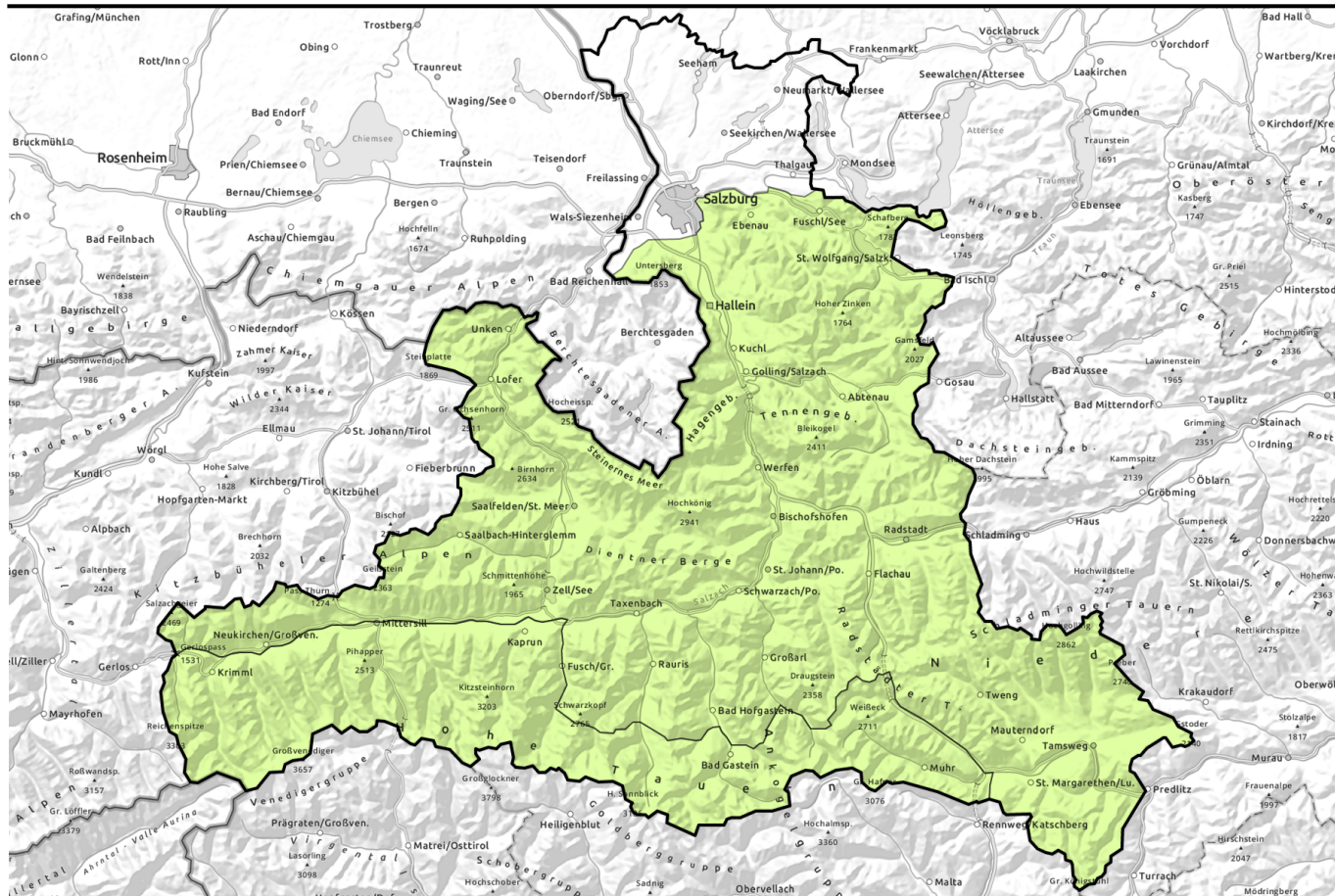


Avalanche report for Wednesday, 22.02.2023, morning



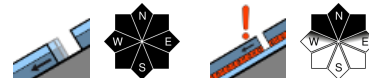
Almost like in April



Chiemgauer Alpen, Heutal, Reiteralpe, Loferer und Leoganger Steinberge, Steinernes Meer, Hochkönig, Hagengebirge, Göllstock, Untersbergstock, Osterhorngruppe, Gamsfeldgruppe, Tennengebirge, Gosaukamm, Pongauer Grasberge, Niedere Tauern Nord, Niedere Tauern Alpenhauptkamm, Niedere Tauern Süd, Nockberge, Dientner Grasberge, Kitzbüheler Alpen, Glemmtal, Oberpinzgauer Grasberge, Goldberggruppe Nord



Großvenedigergruppe Nord, Glocknergruppe Nord, Großvenedigergruppe Alpenhauptkamm, Glocknergruppe Alpenhauptkamm, Goldberggruppe Alpenhauptkamm, Ankogelgruppe, Muhr



Avalanche problems



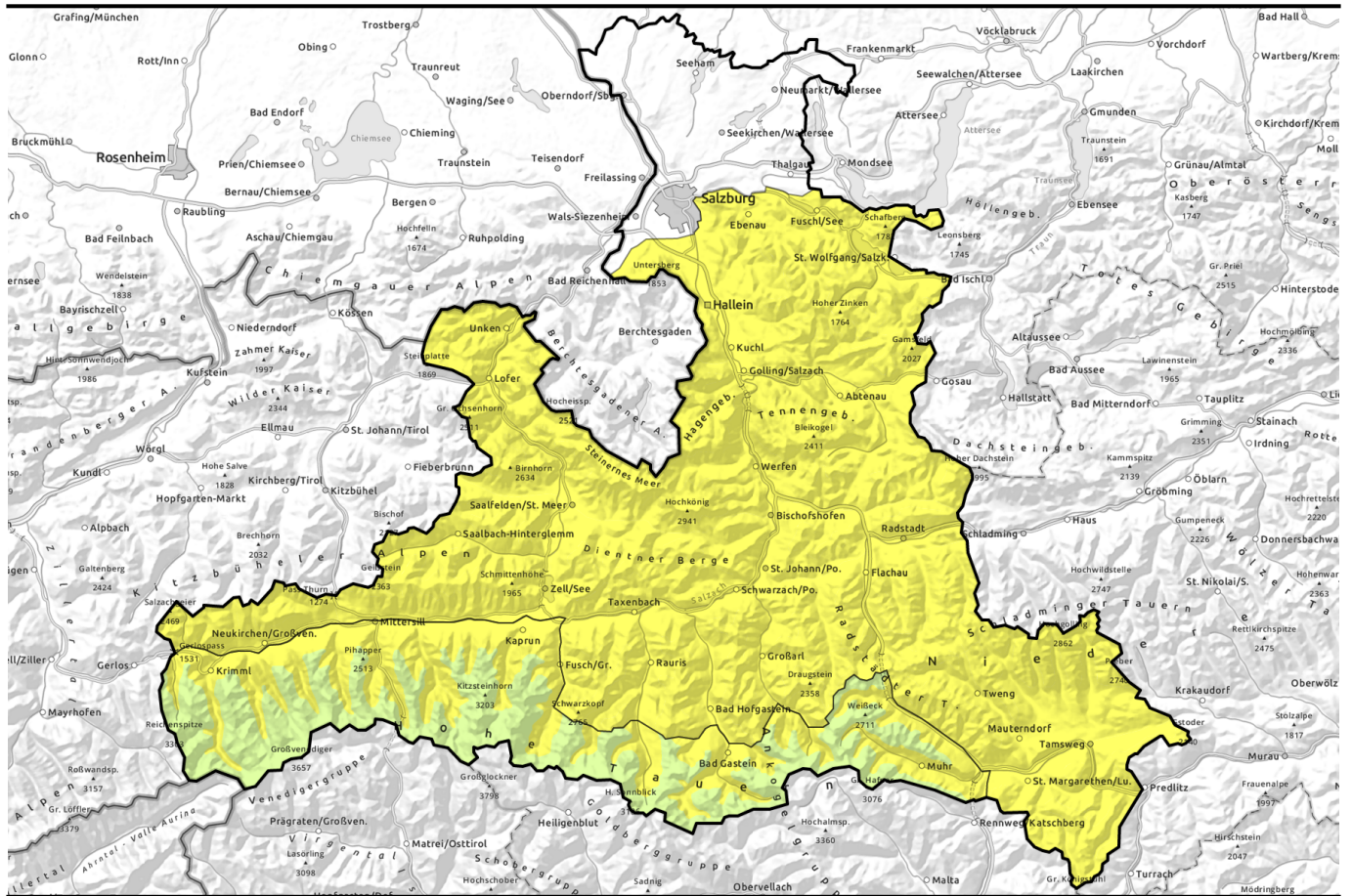
Danger ratings



Expositions



Avalanche report for Wednesday, 22.02.2023, afternoon



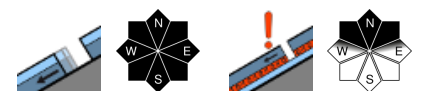
Fast wie im April



Chiemgauer Alpen, Heutal, Reiteralpe, Loferer und Leoganger Steinberge, Steinernes Meer, Hochkönig, Hagengebirge, Göllstock, Untersbergstock, Osterhorngruppe, Gamsfeldgruppe, Tennengebirge, Gosaukamm, Pongauer Grasberge, Niedere Tauern Nord, Niedere Tauern Alpenhauptkamm, Niedere Tauern Süd, Nockberge, Dientner Grasberge, Kitzbüheler Alpen, Glemmtal, Oberpinzgauer Grasberge, Goldberggruppe Nord

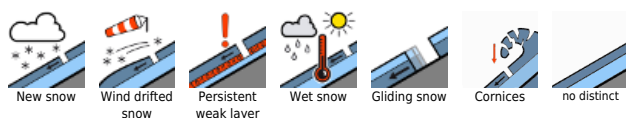


Großvenedigergruppe Nord, Glocknergruppe Nord, Großvenedigergruppe Alpenhauptkamm, Glocknergruppe Alpenhauptkamm, Goldberggruppe Alpenhauptkamm, Ankogelgruppe, Muhr

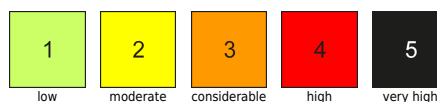


2600 m

Avalanche problems



Danger ratings

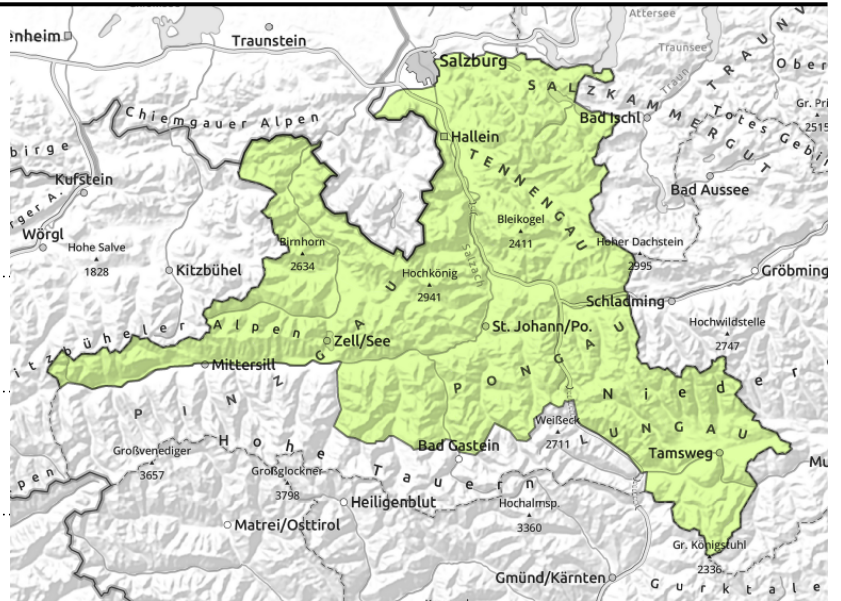


Expositions



Avalanche report for Wednesday, 22.02.2023, morning

Chiemgauer Alpen, Heutal, Reiteralpe, Loferer und Leoganger Steinberge, Steinernes Meer, Hochkönig, Hagengebirge, Göllstock, Untersbergstock, Osterhorngruppe, Gamsfeldgruppe, Tennengebirge, Gosaukamm, Pongauer Grasberge, Niedere Tauern Nord, Niedere Tauern Alpenhauptkamm, Niedere Tauern Süd, Nockberge, Dientner Grasberge, Kitzbüheler Alpen, Glemmtal, Oberpinzgauer Grasberge, Goldberggruppe Nord



avoid zones below glide cracks



heed slope aspects and sun cycle

Snowpack on east-facing slopes softens during the day

Avalanche danger is subject to a daytime cycle, rising from LOW to MODERATE during the day depending on aspect.

Isolated small-to-medium sized glide-snow avalanches trigger, increasingly frequent starting at midday. Zones below glide-cracks, extremely steep grass-covered slopes and smooth rock plates should be circumvented. From very steep rocky slopes which have not yet discharged, mostly small wet loose-snow avalanches can trigger.

A dry slab is unlikely to trigger, if at all, then above 2200m on very steep north-facing slopes by large additional loading.

Snowpack structure

The snowpack layers are well bonded with each other, most often the only weak layer lies at ground level. On the surface, melt-freeze crusts dominate which soften depending on the sun cycle. Overall, little snow lies on the ground and the slopes are becoming bare.

Weather

On Wednesday morning, frequent sunshine, good visibility. In the afternoon, cloudbanks will move in, hamper the sun, diffuse light conditions will prevail. Winds will be light at all altitudes. At 2000 m: +5 degrees; at 3000 m: -3 degrees.

Outlook

Little change expected.

Avalanche problems



Danger ratings

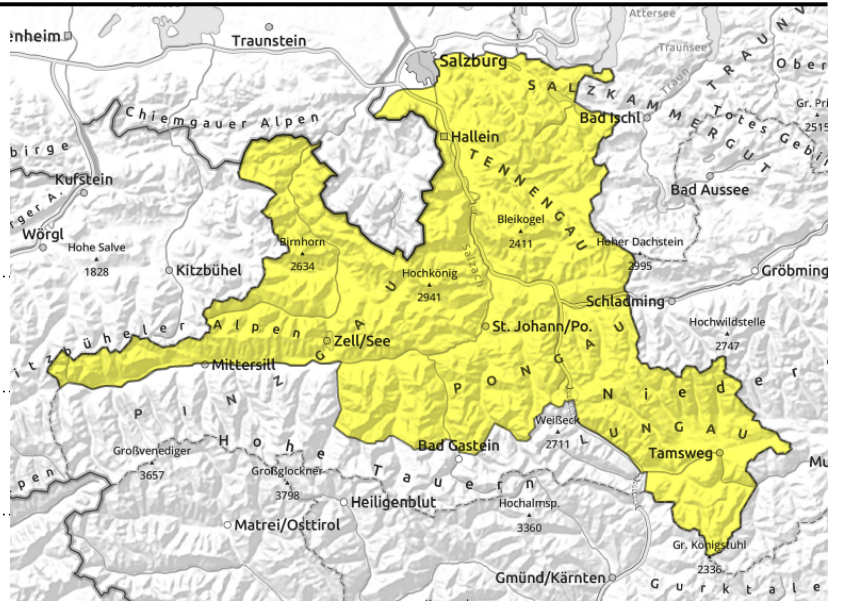


Expositions



Avalanche report for Wednesday, 22.02.2023, afternoon

Chiemgauer Alpen, Heutal, Reiteralpe, Loferer und Leoganger Steinberge, Steinernes Meer, Hochkönig, Hagengebirge, Göllstock, Untersbergstock, Osterhorngruppe, Gamsfeldgruppe, Tennengebirge, Gosaukamm, Pongauer Grasberge, Niedere Tauern Nord, Niedere Tauern Alpenhauptkamm, Niedere Tauern Süd, Nockberge, Dientner Grasberge, Kitzbüheler Alpen, Glemmtal, Oberpinzgauer Grasberge, Goldberggruppe Nord



avoid zones below glide cracks



heed slope aspects and sun cycle

Snowpack on east-facing slopes softens during the day

Avalanche danger is subject to a daytime cycle, rising from LOW to MODERATE during the day depending on aspect.

Isolated small-to-medium sized glide-snow avalanches trigger, increasingly frequent starting at midday. Zones below glide-cracks, extremely steep grass-covered slopes and smooth rock plates should be circumvented. From very steep rocky slopes which have not yet discharged, mostly small wet loose-snow avalanches can trigger.

A dry slab is unlikely to trigger, if at all, then above 2200m on very steep north-facing slopes by large additional loading.

Snowpack structure

The snowpack layers are well bonded with each other, most often the only weak layer lies at ground level. On the surface, melt-freeze crusts dominate which soften depending on the sun cycle. Overall, little snow lies on the ground and the slopes are becoming bare.

Weather

On Wednesday morning, frequent sunshine, good visibility. In the afternoon, cloudbanks will move in, hamper the sun, diffuse light conditions will prevail. Winds will be light at all altitudes. At 2000 m: +5 degrees; at 3000 m: -3 degrees.

Outlook

Little change expected.

Avalanche problems



Danger ratings



Expositions



Avalanche report for Wednesday, 22.02.2023, morning

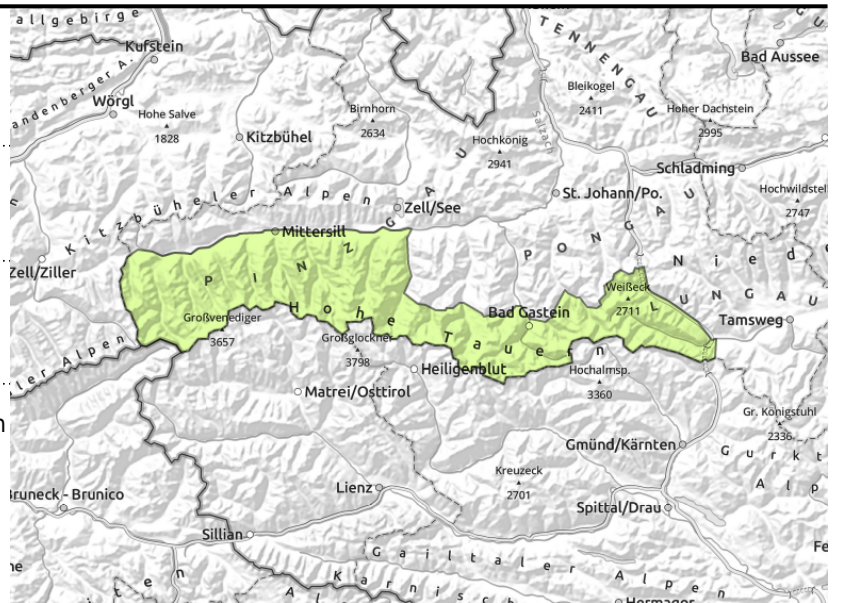
Großvenedigergruppe Nord, Glocknergruppe Nord, Großvenedigergruppe Alpenhauptkamm, Glocknergruppe Alpenhauptkamm, Goldberggruppe Alpenhauptkamm, Ankogelgruppe, Muhr



avoid zones below glide cracks



triggerable in few spots in open terrain



Snowpack on east-facing slopes softens during the day

Avalanche danger is subject to a daytime cycle, rising from LOW to MODERATE below 2600m during the day depending on aspect.

Isolated small-to-medium sized glide-snow avalanches trigger, increasingly frequent starting at midday. Zones below glide-cracks, extremely steep grass-covered slopes and smooth rock plates should be circumvented. From very steep rocky slopes which have not yet discharged, mostly small wet loose-snow avalanches can trigger.

A dry slab is unlikely to trigger, if at all, then above 2200m on very steep north-facing slopes by large additional loading.

Snowpack structure

The snowpack layers are well bonded with each other, most often the only weak layer lies at ground level. On the surface, melt-freeze crusts dominate which soften depending on the sun cycle. Overall, little snow lies on the ground and the slopes are becoming bare.

Weather

On Wednesday morning, frequent sunshine, good visibility. In the afternoon, cloudbanks will move in, hamper the sun, diffuse light conditions will prevail. Winds will be light at all altitudes. At 2000 m: +5 degrees; at 3000 m: -3 degrees.

Outlook

Little change expected.

Avalanche problems



Danger ratings

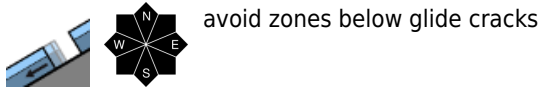
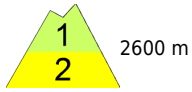


Expositions

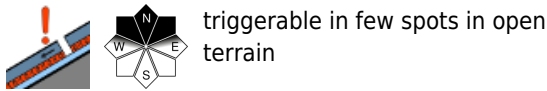


Avalanche report for Wednesday, 22.02.2023, afternoon

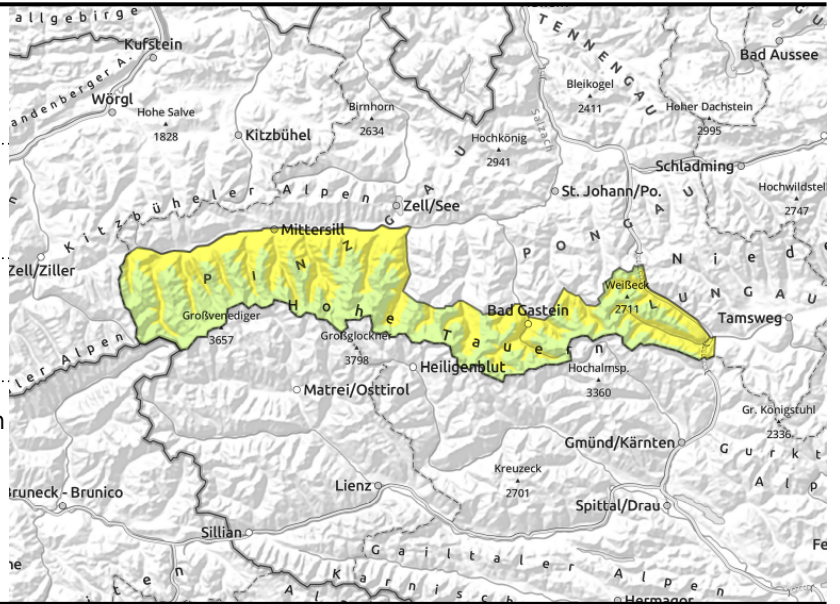
Großvenedigergruppe Nord, Glocknergruppe Nord, Großvenedigergruppe Alpenhauptkamm, Glocknergruppe Alpenhauptkamm, Goldberggruppe Alpenhauptkamm, Ankogelgruppe, Muhr



avoid zones below glide cracks



triggerable in few spots in open terrain



Snowpack on east-facing slopes softens during the day

Avalanche danger is subject to a daytime cycle, rising from LOW to MODERATE below 2600m during the day depending on aspect.

Isolated small-to-medium sized glide-snow avalanches trigger, increasingly frequent starting at midday. Zones below glide-cracks, extremely steep grass-covered slopes and smooth rock plates should be circumvented. From very steep rocky slopes which have not yet discharged, mostly small wet loose-snow avalanches can trigger.

A dry slab is unlikely to trigger, if at all, then above 2200m on very steep north-facing slopes by large additional loading.

Snowpack structure

The snowpack layers are well bonded with each other, most often the only weak layer lies at ground level. On the surface, melt-freeze crusts dominate which soften depending on the sun cycle. Overall, little snow lies on the ground and the slopes are becoming bare.

Weather

On Wednesday morning, frequent sunshine, good visibility. In the afternoon, cloudbanks will move in, hamper the sun, diffuse light conditions will prevail. Winds will be light at all altitudes. At 2000 m: +5 degrees; at 3000 m: -3 degrees.

Outlook

Little change expected.

Translated by Jeffrey McCabe, www.creativtrans.com

Avalanche problems



Danger ratings



Expositions

