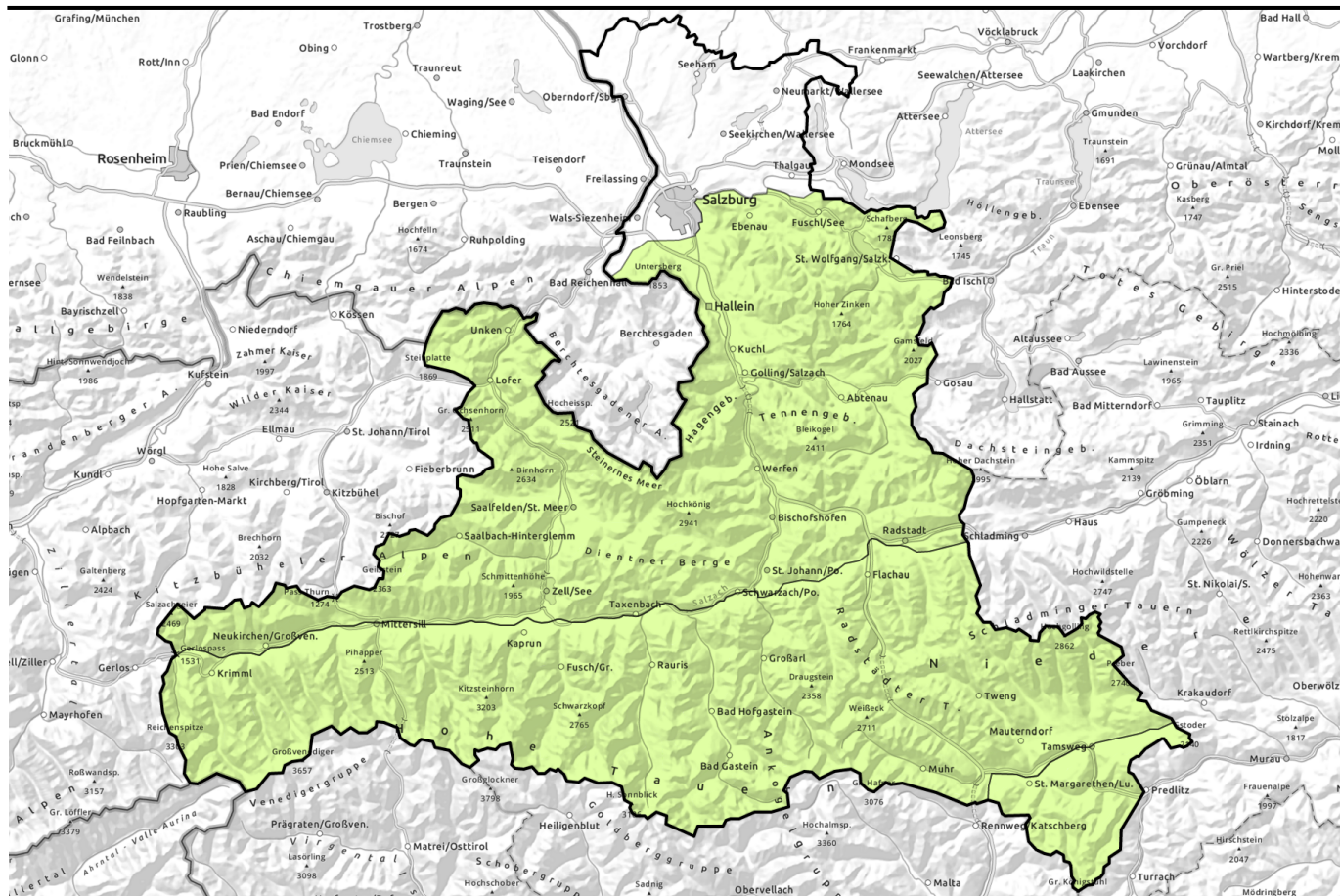


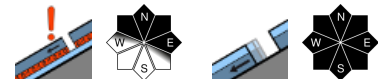
Avalanche report for Tuesday, 21.02.2023, morning



Daytime increase in avalanche danger



Glocknergruppe Alpenhauptkamm, Glocknergruppe Nord, Großvenedigergruppe Nord, Großvenedigergruppe Alpenhauptkamm, Goldberggruppe Nord, Goldberggruppe Alpenhauptkamm, Niedere Tauern Nord, Niedere Tauern Alpenhauptkamm, Ankogelgruppe, Muhr, Niedere Tauern Süd



Steinernes Meer, Hochkönig, Hagengebirge, Göllstock, Tennengebirge, Gosaukamm, Kitzbüheler Alpen, Glemmtal, Oberpinzgauer Grasberge, Dientner Grasberge, Pongauer Grasberge, Osterhorngruppe, Gamsfeldgruppe, Untersbergstock, Nockberge, Loferer und Leoganger Steinberge, Chiemgauer Alpen, Heutal, Reiteralpe



Avalanche problems



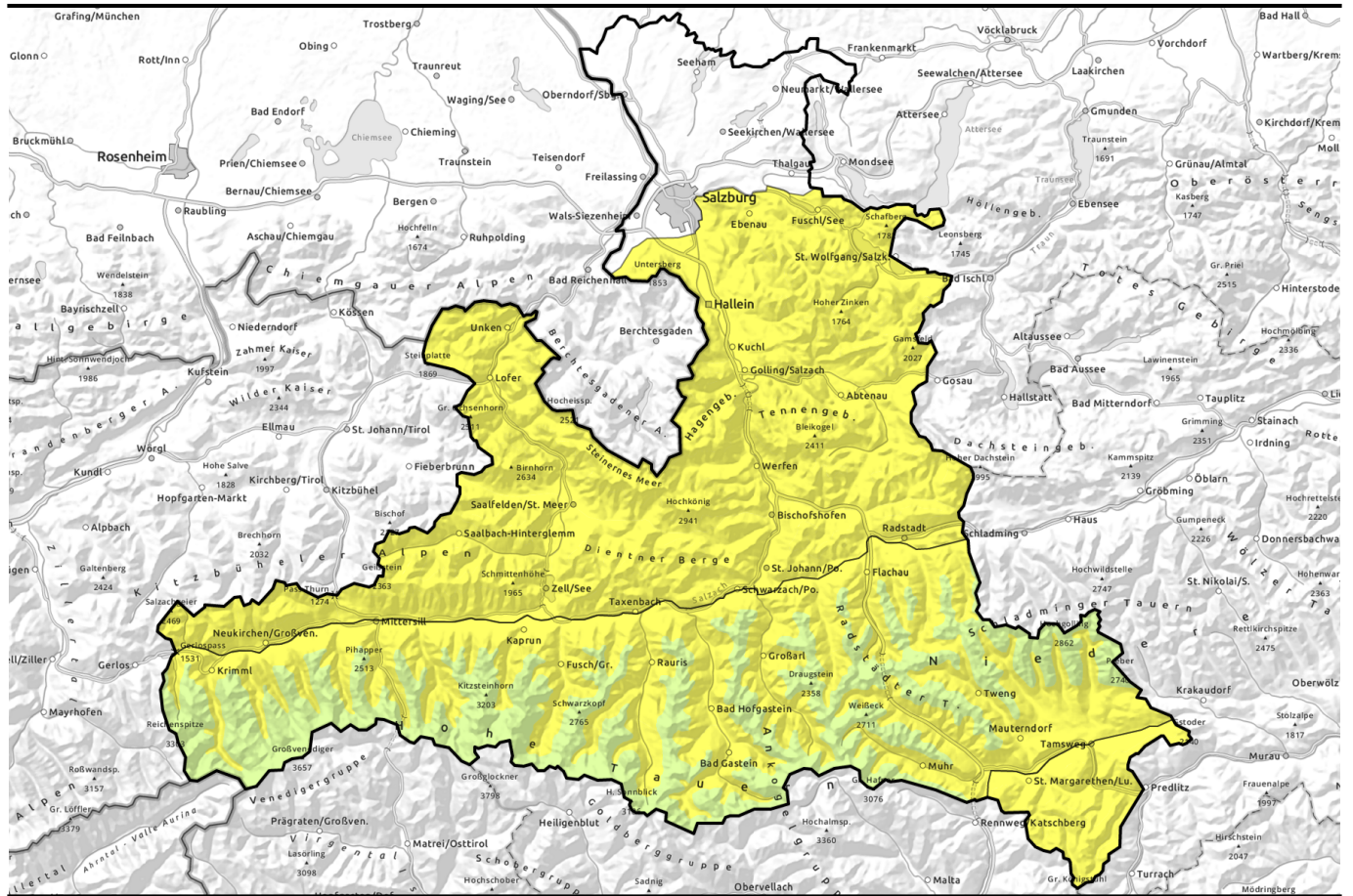
Danger ratings



Expositions



Avalanche report for Tuesday, 21.02.2023, afternoon

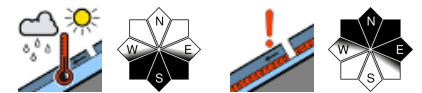


Tageszeitlicher Anstieg der Lawinengefahr



2600 m

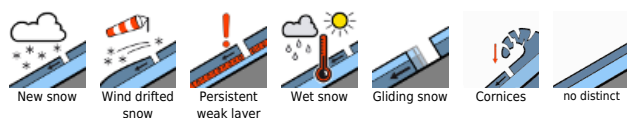
Glocknergruppe Alpenhauptkamm, Glocknergruppe Nord, Großvenedigergruppe Nord, Großvenedigergruppe Alpenhauptkamm, Goldberggruppe Nord, Goldberggruppe Alpenhauptkamm, Niedere Tauern Nord, Niedere Tauern Alpenhauptkamm, Ankogelgruppe, Muhr, Niedere Tauern Süd



Steinernes Meer, Hochkönig, Hagengebirge, Göllstock, Tennengebirge, Gosaukamm, Kitzbüheler Alpen, Glemmtal, Oberpinzgauer Grasberge, Dientner Grasberge, Pongauer Grasberge, Osterhorngruppe, Gamsfeldgruppe, Untersbergstock, Nockberge, Loferer und Leoganger Steinberge, Chiemgauer Alpen, Heutal, Reiteralpe



Avalanche problems



Danger ratings

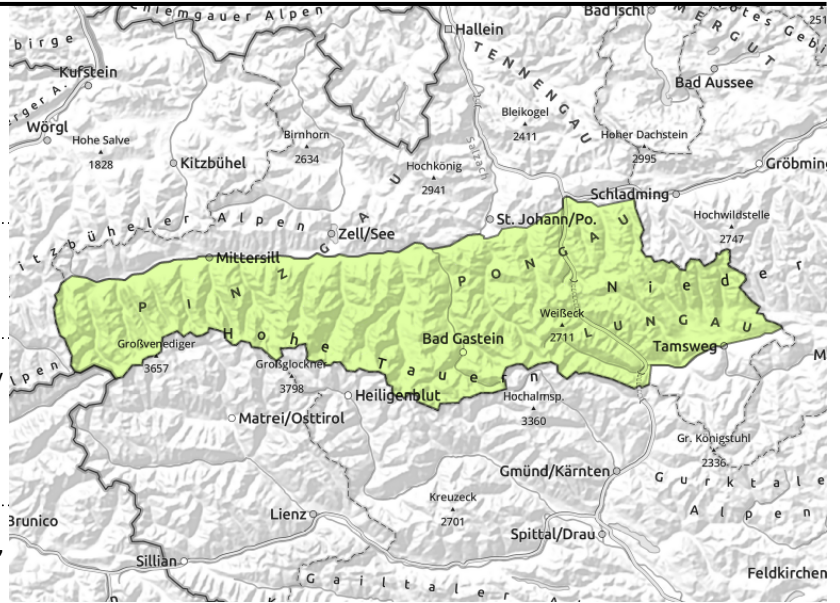


Expositions



Avalanche report for Tuesday, 21.02.2023, morning

Glocknergruppe Alpenhauptkamm, Glocknergruppe Nord, Großvenedigergruppe Nord, Großvenedigergruppe Alpenhauptkamm, Goldberggruppe Alpenhauptkamm, Niedere Tauern Nord, Niedere Tauern Alpenhauptkamm, Ankogelgruppe, Muhr, Niedere Tauern Süd



avoid shallow-snow zones, very steep convex zones. Use single descents and safe assembly points to reduce risk.



avoid zones below glide cracks, pass through endanger zones quickly

Few danger zones for dry slab avalanches. Wet-snow avalanches in the afternoon.

LOW avalanche danger in the morning, MODERATE above 2600m in the afternoon. Fractures in weak layers in lower part of snowpack can in isolated cases be triggered by large additional loading. Transitions from shallow to deep snow are unfavourable on very steep (>35°) N/E facing slopes above 2200 m. Avalanches can reach medium size. In addition, on steep smooth grassy slopes below 2000 m, naturally triggered glide-snow avalanches are possible at any time of day or night which can reach medium size. Pass through terrain below glide cracks as quickly as possible. Due to higher daytime temperatures, likelihood of mostly small wet loose-snow avalanches will rise somewhat. A soft, weak snowpack is indicative of rising danger.

Snowpack structure

The snowpack is quite stable. More deeply embedded layers in the old snow (faceted crystals, also melt-freeze crusts) are unlikely to trigger. Strong westerly winds are not transporting much loose snow. Small snowdrift patches lie deposited atop a favourable snowpack surface. On sunny slopes, a melt-freeze crust can form at night which is capable of bearing loads. Due to higher daytime temperatures the snowpack softens up and thereby loses its firmness. On shady slopes, a wind crust is usually evident, on leeward slopes there is still settled powder.

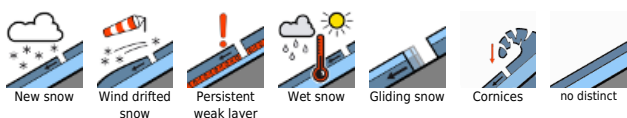
Weather

On Tuesday, sunshine and good visibility. Winds will be light to moderate. At high altitudes in the Tauern regions, NW winds can reach 60 km/hr at midday. At 2000 m: +3 degrees; at 3000 m: -2 degrees.

Outlook

No significant change is expected in avalanche danger levels.

Avalanche problems



Danger ratings

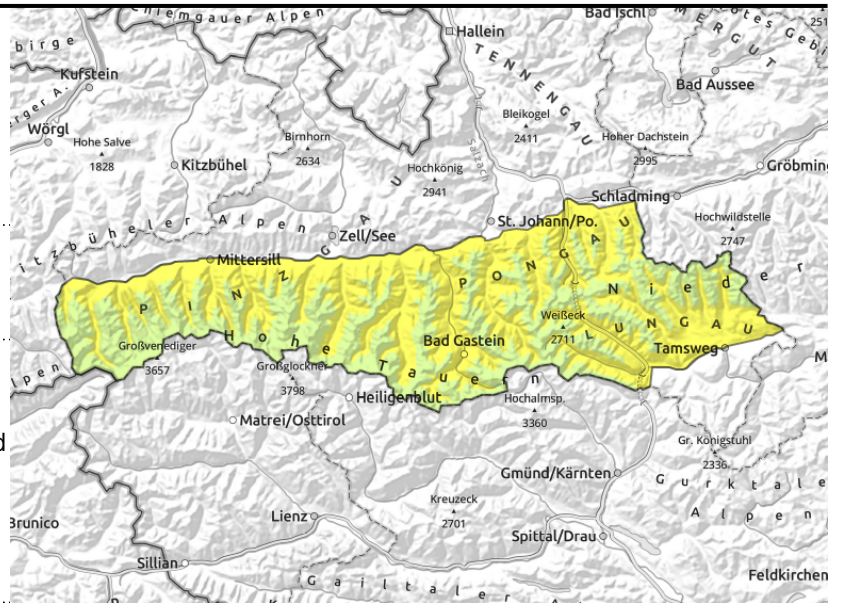


Expositions



Avalanche report for Tuesday, 21.02.2023, afternoon

Glocknergruppe Alpenhauptkamm, Glocknergruppe Nord, Großvenedigergruppe Nord, Großvenedigergruppe Alpenhauptkamm, Goldberggruppe Alpenhauptkamm, Niedere Tauern Nord, Niedere Tauern Alpenhauptkamm, Ankogelgruppe, Muhr, Niedere Tauern Süd



the warmer and weaker the snowpack, the more likely are wet loose-snow avalanches and warm glide-snow avalanches. Avoid extremely steep south-facing slopes and danger zones.



avoid shallow-snow zones, very steep convex zones. Use single descents and safe assembly points to reduce risk.

Few danger zones for dry slab avalanches. Wet-snow avalanches in the afternoon.

LOW avalanche danger in the morning, MODERATE above 2600m in the afternoon.

Fractures in weak layers in lower part of snowpack can in isolated cases be triggered by large additional loading. Transitions from shallow to deep snow are unfavourable on very steep (>35°) N/E facing slopes above 2200 m. Avalanches can reach medium size.

In addition, on steep smooth grassy slopes below 2000 m, naturally triggered glide-snow avalanches are possible at any time of day or night which can reach medium size. Pass through terrain below glide cracks as quickly as possible.

Due to higher daytime temperatures, likelihood of mostly small wet loose-snow avalanches will rise somewhat. A soft, weak snowpack is indicative of rising danger.

Snowpack structure

The snowpack is quite stable. More deeply embedded layers in the old snow (faceted crystals, also melt-freeze crusts) are unlikely to trigger. Strong westerly winds are not transporting much loose snow. Small snowdrift patches lie deposited atop a favourable snowpack surface.

On sunny slopes, a melt-freeze crust can form at night which is capable of bearing loads. Due to higher daytime temperatures the snowpack softens up and thereby loses its firmness. On shady slopes, a wind crust is usually evident, on leeward slopes there is still settled powder.

Weather

On Tuesday, sunshine and good visibility. Winds will be light to moderate. At high altitudes in the Tauern regoins, NW winds can reach 60 km/hr at midday. At 2000 m: +3 degrees; at 3000 m: -2 degrees.

Outlook

No significant change is expected in avalanche danger levels.

Avalanche problems



Danger ratings

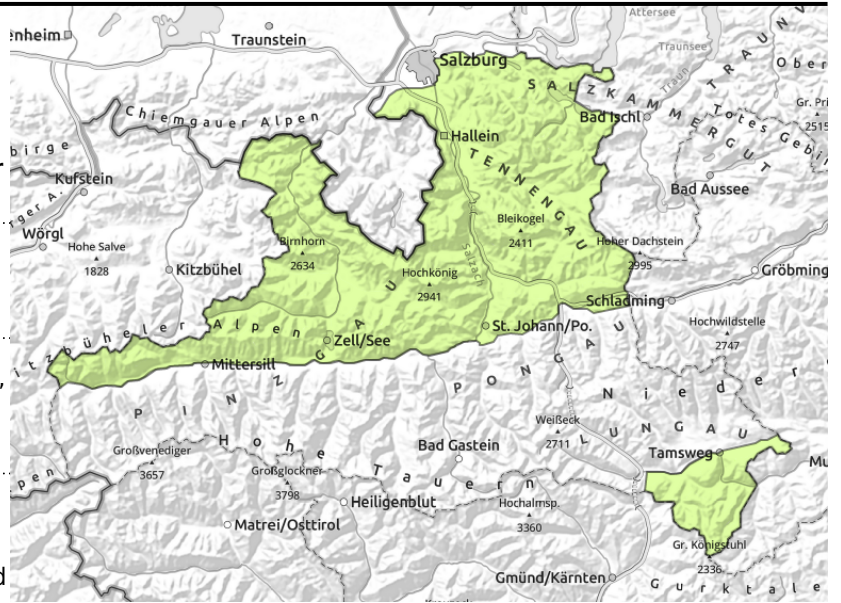


Expositions



Avalanche report for Tuesday, 21.02.2023, morning

Steinernes Meer, Hochkönig, Hagengebirge, Göllstock, Tennengebirge, Gosaukamm, Kitzbüheler Alpen, Glemmtal, Oberpinzgauer Grasberge, Dientner Grasberge, Pongauer Grasberge, Osterhorngruppe, Gamsfeldgruppe, Untersbergstock, Nockberge, Loferer und Leoganger Steinberge, Chiemgauer Alpen, Heutal, Reiteralpe



avoid zones below glide cracks, pass through endanger zones quickly



the warmer and weaker the snowpack, the more likely are wet loose-snow avalanches and warm glide-snow avalanches. Avoid extremely steep south-facing slopes and danger zones.

Glide-snow avalanches and wet loose-snow avalanches in the afternoon

LOW avalanche danger, MODERATE danger in the afternoon.

Due to daytime warming, likelihood of triggerings increases, mostly small wet loose-snow avalanches. A soft, weak snowpack is indicative of rising danger.

On steep smooth grassy slopes below 2000 m, naturally triggered glide-snow avalanches are possible at any time of day or night which can reach medium size. Pass through terrain below glide cracks as quickly as possible.

Snowpack structure

The snowpack is quite stable. More deeply embedded layers in the old snow (faceted crystals, also melt-freeze crusts) are unlikely to trigger. Strong westerly winds are not transporting much loose snow. Small snowdrift patches lie deposited atop a favourable snowpack surface.

On sunny slopes, a melt-freeze crust can form at night which is capable of bearing loads. Due to higher daytime temperatures the snowpack softens up and thereby loses its firmness. On shady slopes, a wind crust is usually evident, on leeward slopes there is still settled powder.

Weather

On Tuesday, sunshine and good visibility. Winds will be light to moderate. At 2000 m: +3 degrees; at 3000 m: -2 degrees.

Outlook

No significant change is expected in avalanche danger levels.

Avalanche problems



Danger ratings

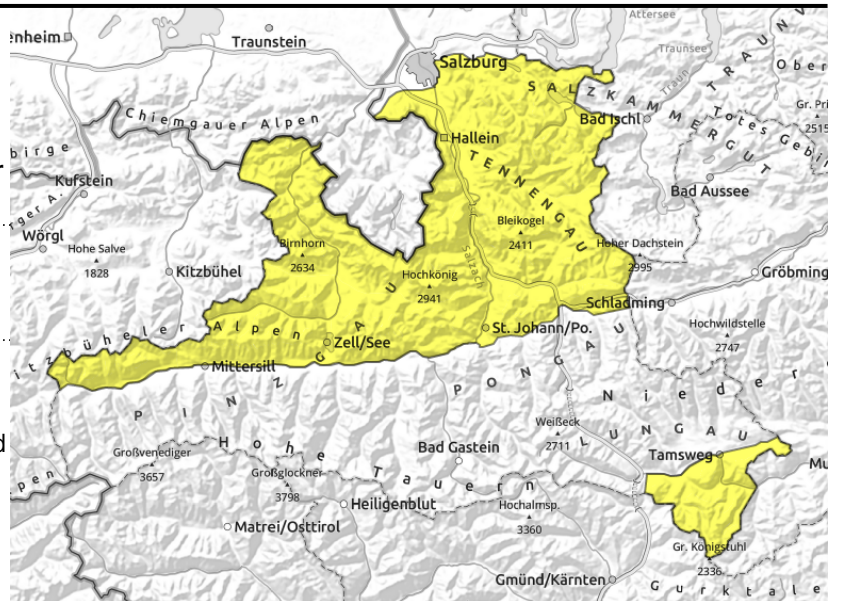


Expositions



Avalanche report for Tuesday, 21.02.2023, afternoon

Steinernes Meer, Hochkönig, Hagengebirge, Göllstock, Tennengebirge, Gosaukamm, Kitzbüheler Alpen, Glemmtal, Oberpinzgauer Grasberge, Dientner Grasberge, Pongauer Grasberge, Osterhorngruppe, Gamsfeldgruppe, Untersbergstock, Nockberge, Loferer und Leoganger Steinberge, Chiemgauer Alpen, Heutal, Reiteralpe



the warmer and weaker the snowpack, the more likely are wet loose-snow avalanches and warm glide-snow avalanches. Avoid extremely steep south-facing slopes and danger zones.



avoid zones below glide cracks, pass through endanger zones quickly

Glide-snow avalanches and wet loose-snow avalanches in the afternoon

LOW avalanche danger, MODERATE danger in the afternoon.

Due to daytime warming, likelihood of triggerings increases, mostly small wet loose-snow avalanches. A soft, weak snowpack is indicative of rising danger.

On steep smooth grassy slopes below 2000 m, naturally triggered glide-snow avalanches are possible at any time of day or night which can reach medium size. Pass through terrain below glide cracks as quickly as possible.

Snowpack structure

The snowpack is quite stable. More deeply embedded layers in the old snow (faceted crystals, also melt-freeze crusts) are unlikely to trigger. Strong westerly winds are not transporting much loose snow. Small snowdrift patches lie deposited atop a favourable snowpack surface.

On sunny slopes, a melt-freeze crust can form at night which is capable of bearing loads. Due to higher daytime temperatures the snowpack softens up and thereby loses its firmness. On shady slopes, a wind crust is usually evident, on leeward slopes there is still settled powder.

Weather

On Tuesday, sunshine and good visibility. Winds will be light to moderate. At 2000 m: +3 degrees; at 3000 m: -2 degrees.

Outlook

No significant change is expected in avalanche danger levels.

Translated by Jeffrey McCabe, www.creativtrans.com

Avalanche problems



Danger ratings



Expositions

