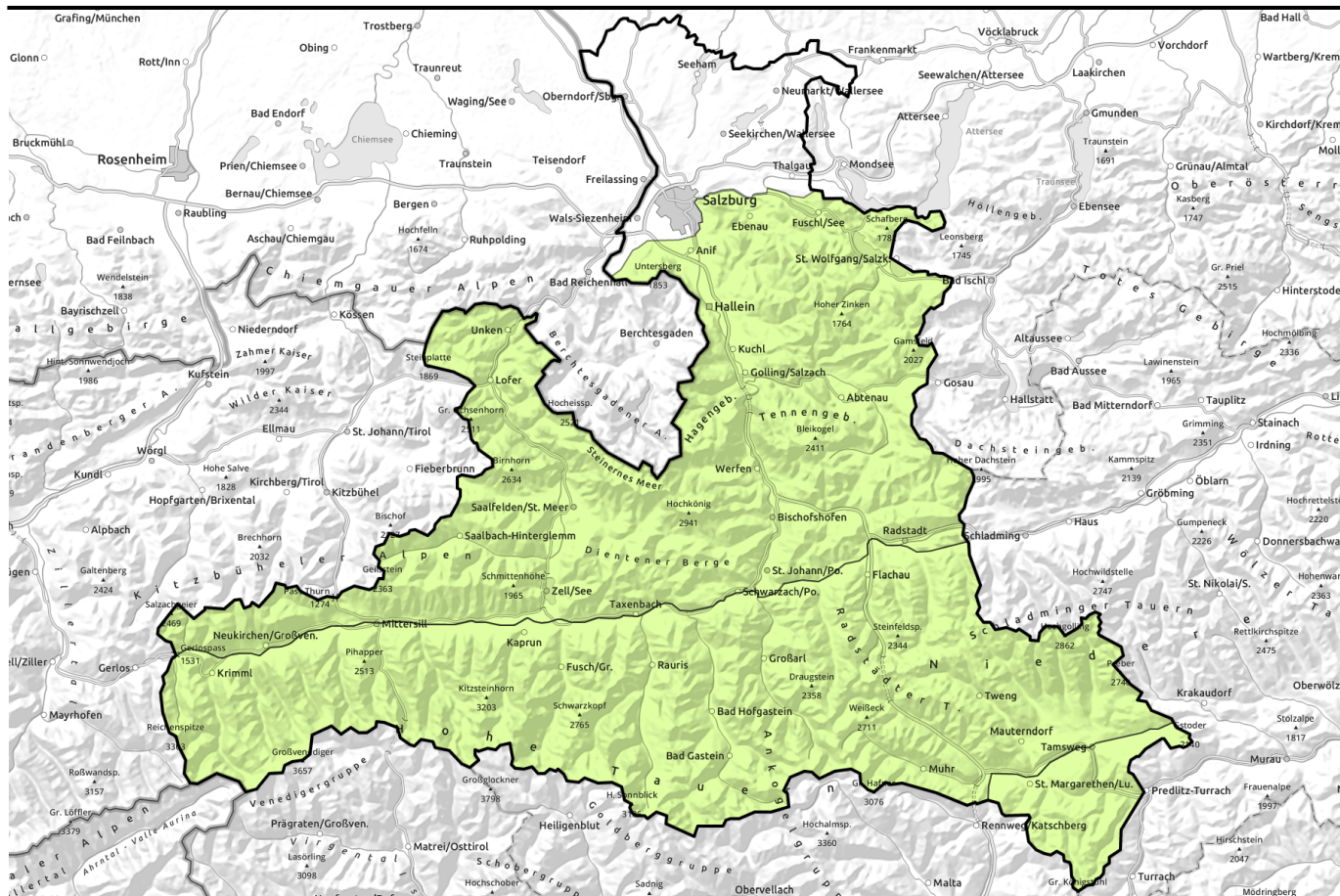


Avalanche report for Monday, 20.02.2023, morning



Daytime increase in avalanche danger

- Glocknergruppe Alpenhauptkamm, Glocknergruppe Nord, Großvenedigergruppe Nord, Großvenedigergruppe Alpenhauptkamm, Goldberggruppe Nord, Goldberggruppe Alpenhauptkamm, Niedere Tauern Nord, Niedere Tauern Alpenhauptkamm, Ankogelgruppe, Muhr, Niedere Tauern Süd
- Loferer und Leoganger Steinberge, Steinernes Meer, Hochkönig, Hagengebirge, Göllstock, Tennengebirge, Gosaukamm, Kitzbüheler Alpen, Glemmtal, Oberpinzgauer Grasberge, Dientner Grasberge, Pongauer Grasberge, Osterhorngruppe, Gamsfeldgruppe, Untersbergstock, Chiemgauer Alpen, Heutal, Reiteralpe
- Nockberge

Avalanche problems

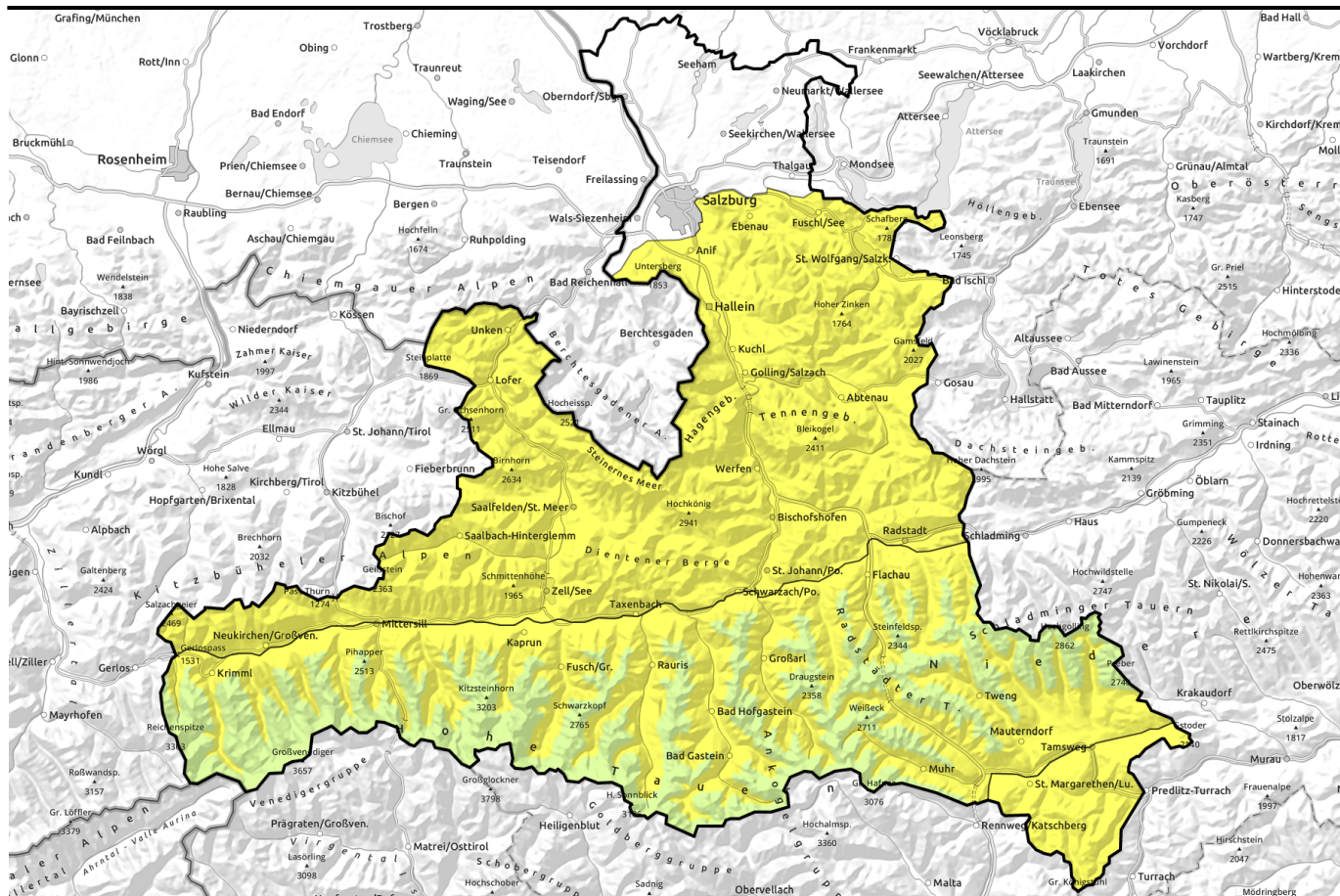


Danger ratings



Expositions



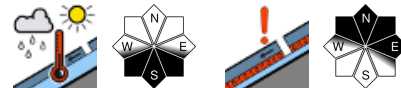


Tageszeitlicher Anstieg der Lawinengefahr



2400 m

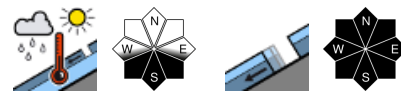
Glocknergruppe Alpenhauptkamm, Glocknergruppe Nord, Großvenedigergruppe Nord, Großvenedigergruppe Alpenhauptkamm, Goldberggruppe Nord, Goldberggruppe Alpenhauptkamm, Niedere Tauern Nord, Niedere Tauern Alpenhauptkamm, Ankogelgruppe, Muhr, Niedere Tauern Süd



Loferer und Leoganger Steinberge, Steinernes Meer, Hochkönig, Hagengebirge, Gölstock, Tennengebirge, Gosaukamm, Kitzbüheler Alpen, Glemmtal, Oberpinzgauer Grasberge, Dientner Grasberge, Pongauer Grasberge, Osterhorngruppe, Gamsfeldgruppe, Untersbergstock, Chiemgauer Alpen, Heutal, Reiteralpe



Nockberge



Avalanche problems



Danger ratings

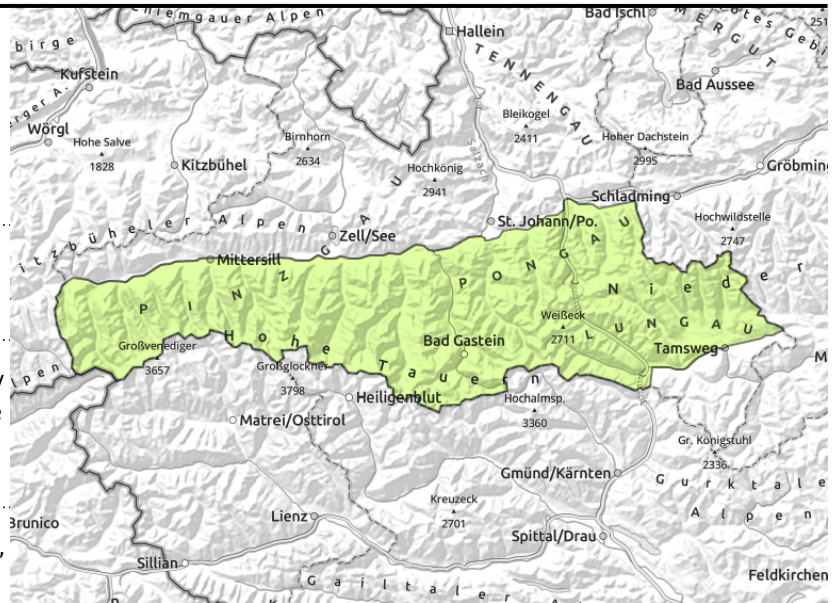


Expositions



Avalanche report for Monday, 20.02.2023, morning

Glocknergruppe Alpenhauptkamm, Glocknergruppe Nord, Großvenedigergruppe Nord, Großvenedigergruppe Alpenhauptkamm, Goldberggruppe Nord, Goldberggruppe Alpenhauptkamm, Niedere Tauern Nord, Niedere Tauern Alpenhauptkamm, Ankogelgruppe, Muhr, Niedere Tauern Süd



avoid shallow-snow zones, very steep convex zones. Use single descents and safe assembly points to reduce risk.



avoid zones below glide cracks, pass through endanger zones quickly

Few danger zones for dry slab avalanches. Glide-snow avalanches starting in afternoon.

LOW avalanche danger.

Fractures in weak layers in lower part of snowpack can in isolated cases be triggered by large additional loading. Transitions from shallow to deep snow are unfavourable on very steep ($>35^\circ$) N/E facing slopes above 2200 m. Avalanches can reach medium size.

In addition, on steep smooth grassy slopes below 2000 m, naturally triggered glide-snow avalanches are possible at any time of day or night which can reach medium size. Pass through terrain below glide cracks as quickly as possible.

Due to higher daytime temperatures, likelihood of mostly small wet loose-snow avalanches will rise somewhat. A soft, weak snowpack is indicative of rising danger.

Fresh, small snowdrift accumulations are being generated on east-facing slopes. They are bonding well with the old snowpack and are unlikely to trigger.

Snowpack structure

The snowpack is quite stable. More deeply embedded layers in the old snow (faceted crystals, also melt-freeze crusts) are unlikely to trigger. Strong westerly winds are not transporting much loose snow. Small snowdrift patches lie deposited atop a favourable snowpack surface, although highly irregular (showing impact of warmth and sun below 1500 m and on all sunny slopes, still powdery on shady wind-protected slopes, elsewhere showing signs of wind impact). Wind-exposed terrain is often bare of snow.

The snowpack softens during the course of the day and thus forfeits its firmness.

Weather

On Monday, residual clouds near the Northern Alps will disperse in the morning, the sun will come out. Near Tauern and Nockberge, frequent sunshine. At high altitudes, brisk-to-strong NW winds. At 2000 m: rising from -4 to $+2$ degrees; at 3000 m from -6 to 0 degrees.

Outlook

No significant change is expected in avalanche danger levels.

Avalanche problems



New snow



Wind drifted snow



Persistent weak layer



Wet snow



Gliding snow



Cornices



no distinct

Danger ratings



1
low



2
moderate



3
considerable



4
high



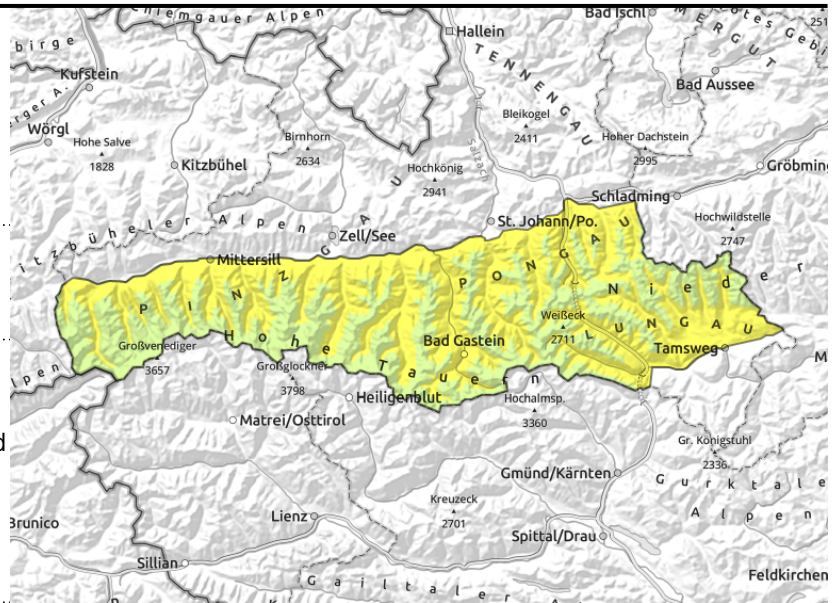
5
very high

Expositions



Avalanche report for Monday, 20.02.2023, afternoon

Glocknergruppe Alpenhauptkamm, Glocknergruppe Nord, Großvenedigergruppe Nord, Großvenedigergruppe Alpenhauptkamm, Goldberggruppe Nord, Goldberggruppe Alpenhauptkamm, Niedere Tauern Nord, Niedere Tauern Alpenhauptkamm, Ankogelgruppe, Muhr, Niedere Tauern Süd



the warmer and weaker the snowpack, the more likely are wet loose-snow avalanches and warm glide-snow avalanches. Avoid extremely steep south-facing slopes and danger zones.



avoid shallow-snow zones, very steep convex zones. Use single descents and safe assembly points to reduce risk.

Few danger zones for dry slab avalanches. Glide-snow avalanches starting in afternoon.

LOW avalanche danger.

Fractures in weak layers in lower part of snowpack can in isolated cases be triggered by large additional loading. Transitions from shallow to deep snow are unfavourable on very steep (>35°) N/E facing slopes above 2200 m. Avalanches can reach medium size.

In addition, on steep smooth grassy slopes below 2000 m, naturally triggered glide-snow avalanches are possible at any time of day or night which can reach medium size. Pass through terrain below glide cracks as quickly as possible.

Due to higher daytime temperatures, likelihood of mostly small wet loose-snow avalanches will rise somewhat. A soft, weak snowpack is indicative of rising danger.

Fresh, small snowdrift accumulations are being generated on east-facing slopes. They are bonding well with the old snowpack and are unlikely to trigger.

Snowpack structure

The snowpack is quite stable. More deeply embedded layers in the old snow (faceted crystals, also melt-freeze crusts) are unlikely to trigger. Strong westerly winds are not transporting much loose snow. Small snowdrift patches lie deposited atop a favourable snowpack surface, although highly irregular (showing impact of warmth and sun below 1500 m and on all sunny slopes, still powdery on shady wind-protected slopes, elsewhere showing signs of wind impact). Wind-exposed terrain is often bare of snow.

The snowpack softens during the course of the day and thus forfeits its firmness.

Weather

On Monday, residual clouds near the Northern Alps will disperse in the morning, the sun will come out. Near Tauern and Nockberge, frequent sunshine. At high altitudes, brisk-to-strong NW winds. At 2000

Avalanche problems



Danger ratings



Expositions



published at 19.02.2023, 18:00 h by Veronika Krieger

Avalanche report for Monday, 20.02.2023, afternoon

m: rising from -4 to +2 degrees; at 3000 m from -6 to 0 degrees.

Outlook

No significant change is expected in avalanche danger levels.

Avalanche problems



Danger ratings

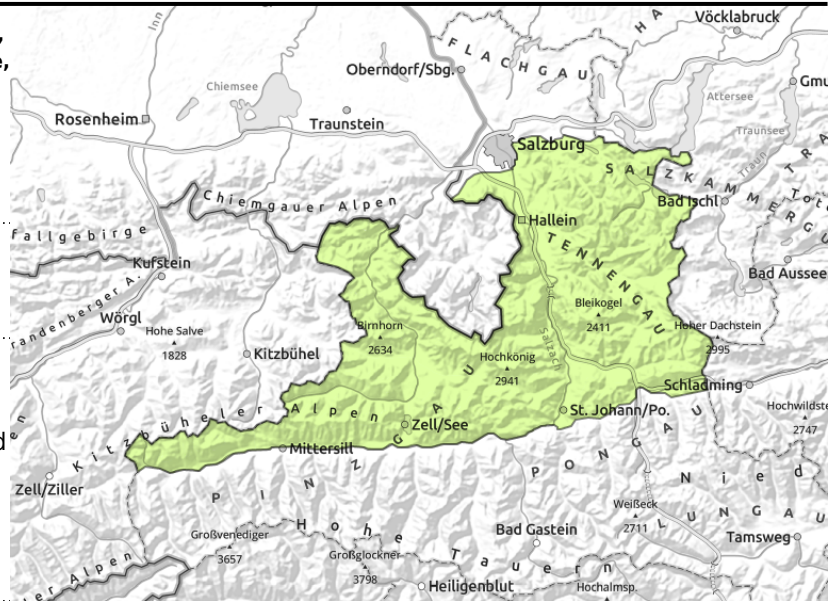


Expositions



Avalanche report for Monday, 20.02.2023, morning

Loferer und Leoganger Steinberge, Steinernes Meer, Hochkönig, Hagengebirge, Göllstock, Tennengebirge, Gosaukamm, Kitzbüheler Alpen, Glemmtal, Oberpinzgauer Grasberge, Dientner Grasberge, Pongauer Grasberge, Osterhorngruppe, Gamsfeldgruppe, Untersbergstock, Chiemgauer Alpen, Heutal, Reiteralpe



the warmer and weaker the snowpack, the more likely are wet loose-snow avalanches and warm glide-snow avalanches. Avoid extremely steep south-facing slopes and danger zones.



avoid zones below glide cracks, pass through endanger zones quickly

Glide-snow avalanches and wet loose-snow avalanches

LOW avalanche danger, MODERATE danger in the afternoon.

Due to daytime warming, likelihood of triggerings increases, mostly small wet loose-snow avalanches. A soft, weak snowpack is indicative of rising danger.

On steep smooth grassy slopes below 2000 m, naturally triggered glide-snow avalanches are possible at any time of day or night which can reach medium size. Pass through terrain below glide cracks as quickly as possible.

Fresh, small snowdrift accumulations are being generated on east-facing slopes. They are bonding well with the old snowpack and are unlikely to trigger.

Snowpack structure

The snowpack is quite stable. More deeply embedded layers in the old snow (faceted crystals, also melt-freeze crusts) are unlikely to trigger. Strong westerly winds are not transporting much loose snow. Small snowdrift patches lie deposited atop a favourable snowpack surface, although highly irregular (showing impact of warmth and sun below 1500 m and on all sunny slopes, still powdery on shady wind-protected slopes, elsewhere showing signs of wind impact). Wind-exposed terrain is often bare of snow.

Up to intermediate altitudes the snowpack is thoroughly wet from the rainfall on Sunday. The snowpack softens during the course of the day and thus forfeits its firmness.

Weather

On Monday, residual clouds near the Northern Alps will disperse in the morning, the sun will come out. At high altitudes, brisk-to-strong NW winds. At 2000 m: rising from -4 to +2 degrees.

Outlook

No significant change is expected in avalanche danger levels.

Avalanche problems



Danger ratings

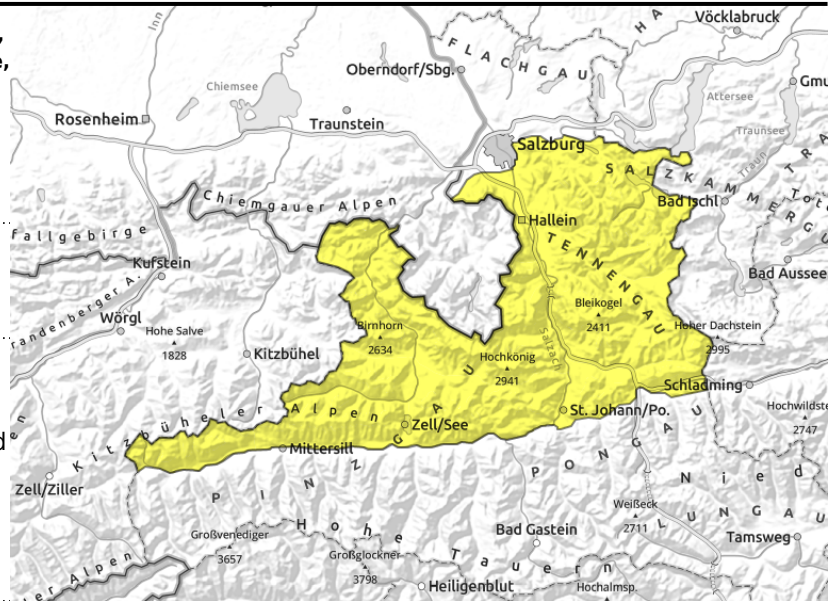


Expositions



Avalanche report for Monday, 20.02.2023, afternoon

Loferer und Leoganger Steinberge, Steinernes Meer, Hochkönig, Hagengebirge, Göllstock, Tennengebirge, Gosaukamm, Kitzbüheler Alpen, Glemmtal, Oberpinzgauer Grasberge, Dientner Grasberge, Pongauer Grasberge, Osterhorngruppe, Gamsfeldgruppe, Untersbergstock, Chiemgauer Alpen, Heutal, Reiteralpe



the warmer and weaker the snowpack, the more likely are wet loose-snow avalanches and warm glide-snow avalanches. Avoid extremely steep south-facing slopes and danger zones.



avoid zones below glide cracks, pass through endanger zones quickly

Glide-snow avalanches and wet loose-snow avalanches

LOW avalanche danger, MODERATE danger in the afternoon.

Due to daytime warming, likelihood of triggerings increases, mostly small wet loose-snow avalanches. A soft, weak snowpack is indicative of rising danger.

On steep smooth grassy slopes below 2000 m, naturally triggered glide-snow avalanches are possible at any time of day or night which can reach medium size. Pass through terrain below glide cracks as quickly as possible.

Fresh, small snowdrift accumulations are being generated on east-facing slopes. They are bonding well with the old snowpack and are unlikely to trigger.

Snowpack structure

The snowpack is quite stable. More deeply embedded layers in the old snow (faceted crystals, also melt-freeze crusts) are unlikely to trigger. Strong westerly winds are not transporting much loose snow. Small snowdrift patches lie deposited atop a favourable snowpack surface, although highly irregular (showing impact of warmth and sun below 1500 m and on all sunny slopes, still powdery on shady wind-protected slopes, elsewhere showing signs of wind impact). Wind-exposed terrain is often bare of snow.

Up to intermediate altitudes the snowpack is thoroughly wet from the rainfall on Sunday. The snowpack softens during the course of the day and thus forfeits its firmness.

Weather

On Monday, residual clouds near the Northern Alps will disperse in the morning, the sun will come out. At high altitudes, brisk-to-strong NW winds. At 2000 m: rising from -4 to +2 degrees.

Outlook

No significant change is expected in avalanche danger levels.

Avalanche problems



Danger ratings



Expositions

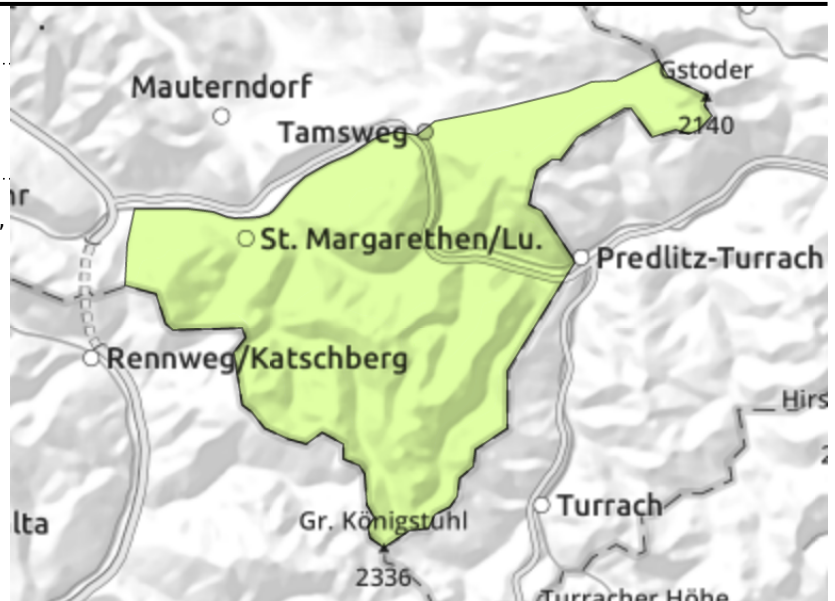


Avalanche report for Monday, 20.02.2023, morning

Nockberge



avoid zones below glide cracks,
pass through endanger zones
quickly



Glide-snow avalanches and wet loose-snow avalanches

LOW avalanche danger, MODERATE danger in the afternoon.

On steep smooth grassy slopes below 2000 m, naturally triggered glide-snow avalanches are possible at any time of day or night which can reach medium size. Pass through terrain below glide cracks as quickly as possible.

Due to daytime warming, likelihood of triggerings increases, mostly small wet loose-snow avalanches. A soft, weak snowpack is indicative of rising danger.

Snowpack structure

The snowpack is quite stable. More deeply embedded layers in the old snow (faceted crystals, also melt-freeze crusts) are unlikely to trigger. Strong westerly winds are not transporting much loose snow. Small snowdrift patches lie deposited atop a favourable snowpack surface, although highly irregular (showing impact of warmth and sun below 1500 m and on all sunny slopes, still powdery on shady wind-protected slopes, elsewhere showing signs of wind impact). Wind-exposed terrain is often bare of snow.

The snowpack softens during the course of the day and thus forfeits its firmness.

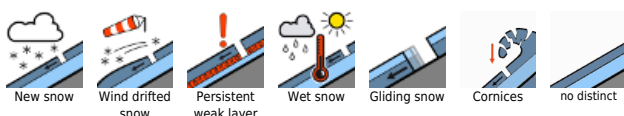
Weather

Near the Nockberge, frequent sunshine. At high altitudes, brisk-to-strong NW winds. At 2000 m: rising from -4 to +2 degrees.

Outlook

No significant change is expected in avalanche danger levels.

Avalanche problems



Danger ratings



Expositions



Avalanche report for Monday, 20.02.2023, afternoon

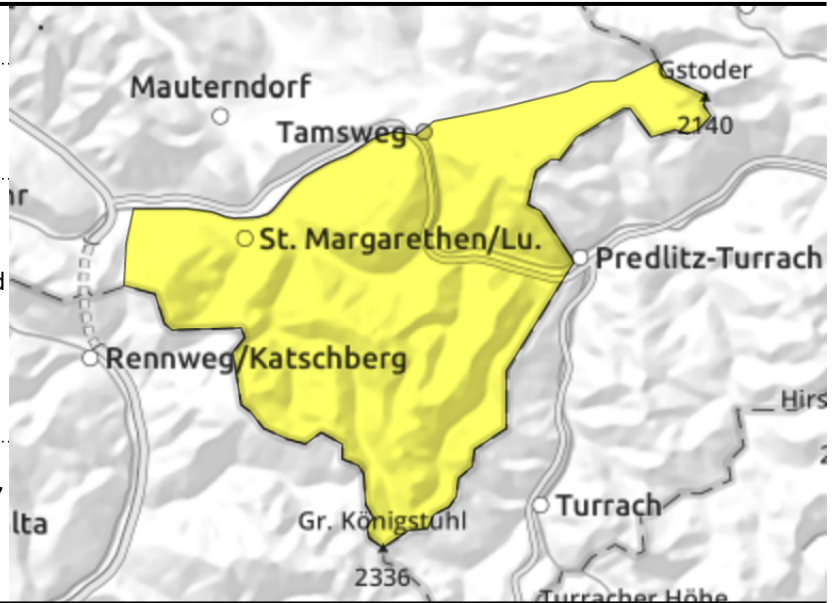
Nockberge



the warmer and weaker the snowpack, the more likely are wet loose-snow avalanches and warm glide-snow avalanches. Avoid extremely steep south-facing slopes and danger zones.



avoid zones below glide cracks, pass through endanger zones quickly



Glide-snow avalanches and wet loose-snow avalanches

LOW avalanche danger, MODERATE danger in the afternoon.

On steep smooth grassy slopes below 2000 m, naturally triggered glide-snow avalanches are possible at any time of day or night which can reach medium size. Pass through terrain below glide cracks as quickly as possible.

Due to daytime warming, likelihood of triggerings increases, mostly small wet loose-snow avalanches. A soft, weak snowpack is indicative of rising danger.

Snowpack structure

The snowpack is quite stable. More deeply embedded layers in the old snow (faceted crystals, also melt-freeze crusts) are unlikely to trigger. Strong westerly winds are not transporting much loose snow. Small snowdrift patches lie deposited atop a favourable snowpack surface, although highly irregular (showing impact of warmth and sun below 1500 m and on all sunny slopes, still powdery on shady wind-protected slopes, elsewhere showing signs of wind impact). Wind-exposed terrain is often bare of snow.

The snowpack softens during the course of the day and thus forfeits its firmness.

Weather

Near the Nockberge, frequent sunshine. At high altitudes, brisk-to-strong NW winds. At 2000 m: rising from -4 to +2 degrees.

Outlook

No significant change is expected in avalanche danger levels.

Translated by Jeffrey McCabe, www.creativtrans.com

Avalanche problems



Danger ratings



Expositions

