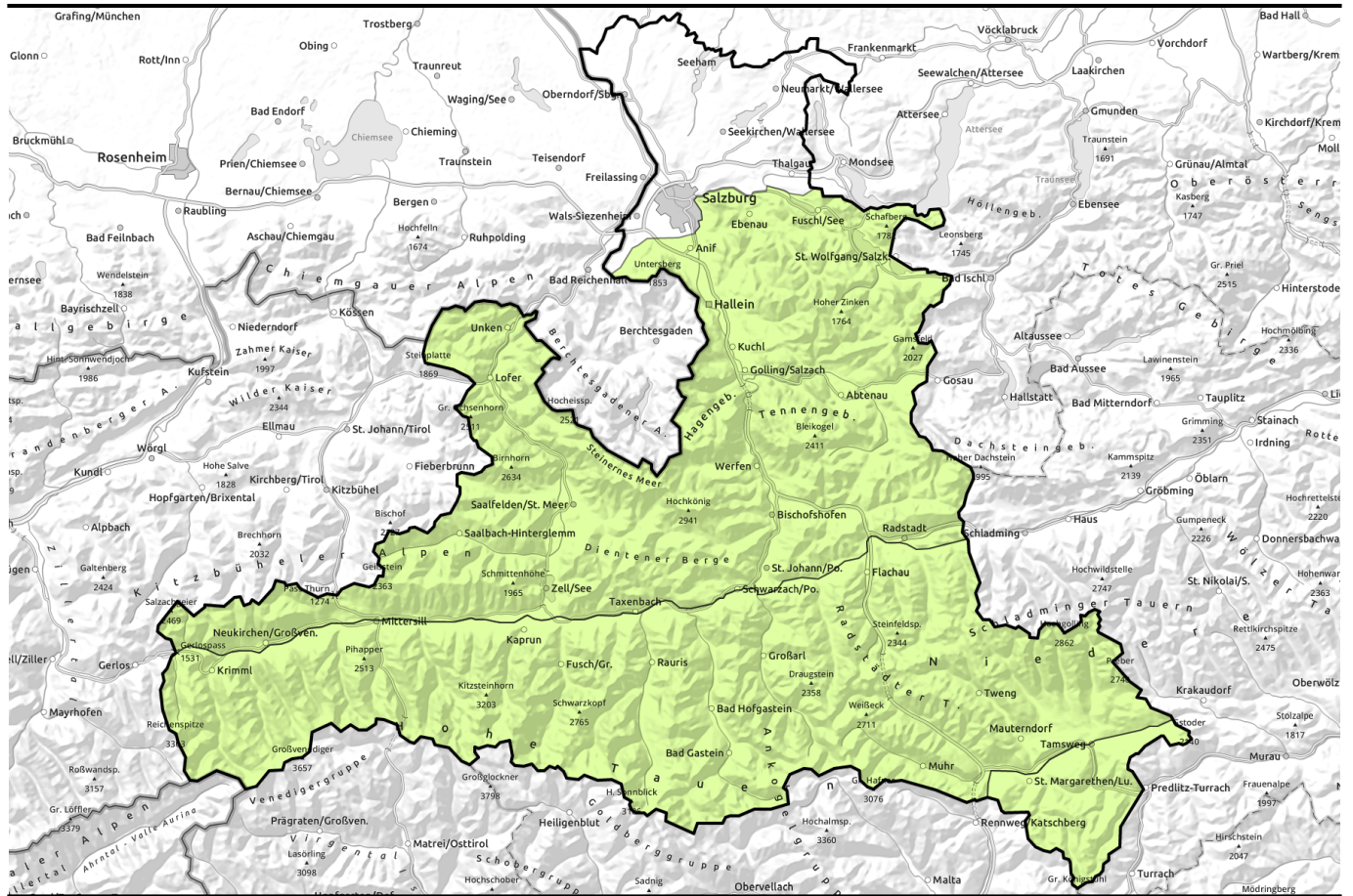


# Avalanche report for Saturday, 18.02.2023, morning



## Slight daytime rise in avalanche danger



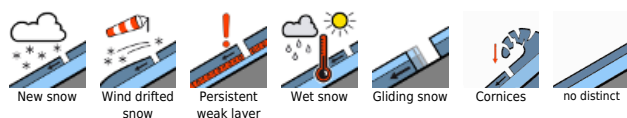
Glocknergruppe Alpenhauptkamm, Glocknergruppe Nord, Großvenedigergruppe Nord, Großvenedigergruppe Alpenhauptkamm, Goldberggruppe Nord, Goldberggruppe Alpenhauptkamm, Niedere Tauern Nord, Niedere Tauern Alpenhauptkamm, Ankogelgruppe, Muhr, Niedere Tauern Süd



Loferer und Leoganger Steinberge, Steinernes Meer, Hochkönig, Hagengebirge, Göllstock, Tennengebirge, Gosaukamm, Kitzbüheler Alpen, Glemmtal, Oberpinzgauer Grasberge, Dientner Grasberge, Pongauer Grasberge, Osterhorngruppe, Gamsfeldgruppe, Chiemgauer Alpen, Heutal, Reiteralpe, Untersbergstock, Nockberge



### Avalanche problems



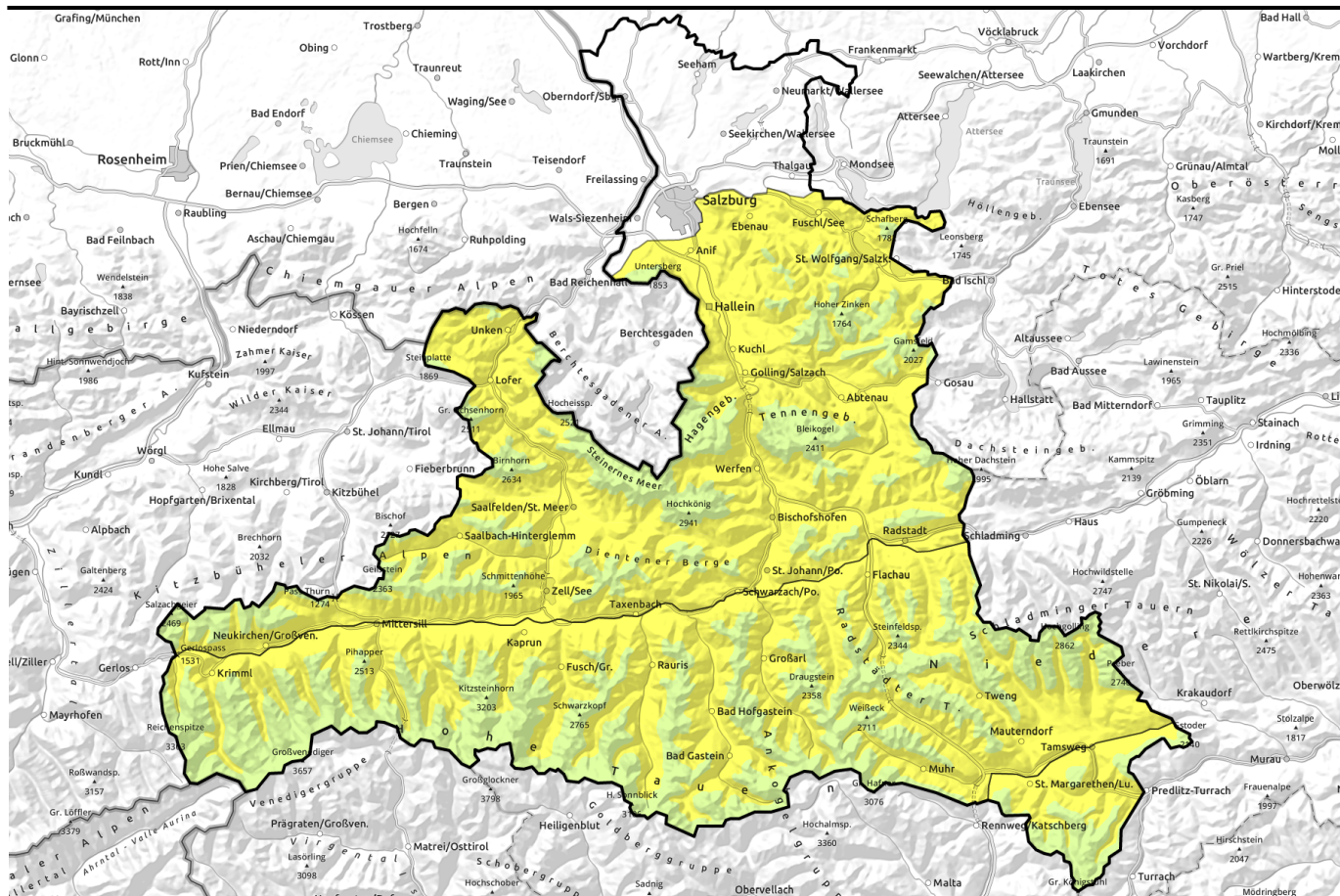
### Danger ratings



### Expositions



# Avalanche report for Saturday, 18.02.2023, afternoon

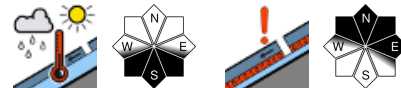


## Leichter tageszeitlicher Anstieg der Lawinengefahr



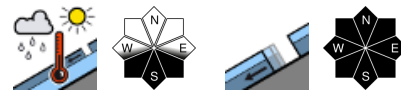
2400 m

Glocknergruppe Alpenhauptkamm, Glocknergruppe Nord, Großvenedigergruppe Nord, Großvenedigergruppe Alpenhauptkamm, Goldberggruppe Nord, Goldberggruppe Alpenhauptkamm, Niedere Tauern Nord, Niedere Tauern Alpenhauptkamm, Ankogelgruppe, Muhr, Niedere Tauern Süd



2400 m

Loferer und Leoganger Steinberge, Steinernes Meer, Hochkönig, Hagengebirge, Göllstock, Tennengebirge, Gosaukamm, Kitzbüheler Alpen, Glemmtal, Oberpinzgauer Grasberge, Dientner Grasberge, Pongauer Grasberge, Osterhorngruppe, Gamsfeldgruppe, Chiemgauer Alpen, Heutal, Reiteralpe, Untersbergstock, Nockberge



### Avalanche problems



### Danger ratings

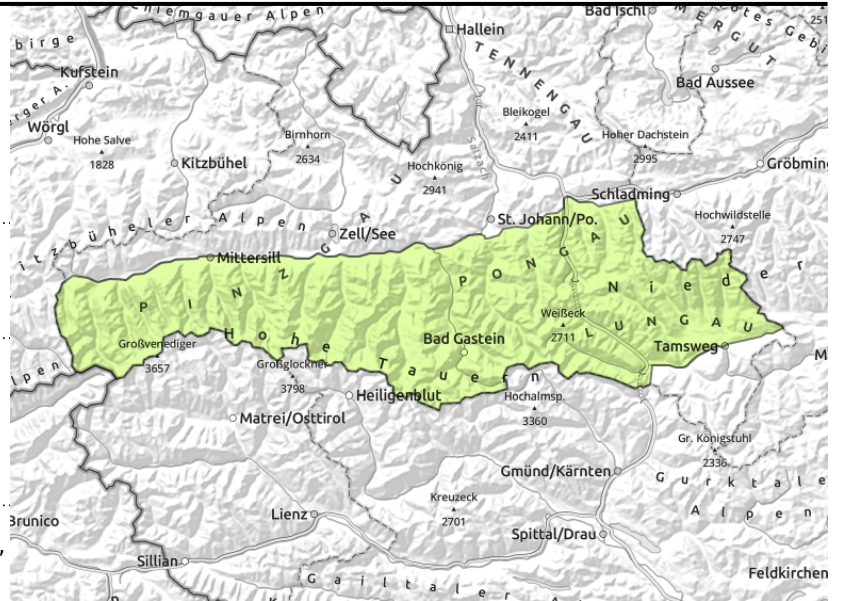


### Expositions



## Avalanche report for Saturday, 18.02.2023, morning

**Glocknergruppe Alpenhauptkamm, Glocknergruppe Nord, Großvenedigergruppe Nord, Großvenedigergruppe Alpenhauptkamm, Goldberggruppe Nord, Goldberggruppe Alpenhauptkamm, Niedere Tauern Nord, Niedere Tauern Alpenhauptkamm, Ankogelgruppe, Muhr, Niedere Tauern Süd**



avoid shallow snow zones and very steep convex zones. Use single descents and safe assembly points to reduce risk.



avoid zones below glide cracks, pass through endanger zones quickly

## Few danger zones for dry slab avalanches. Glide-snow avalanches starting in afternoon.

LOW avalanche danger. In afternoon, MODERATE avalanche danger below 2400m.

Fractures in weak layers in lower part of snowpack can in isolated cases be triggered by large additional loading. Transitions from shallow to deep snow are unfavourable on very steep ( $>35^\circ$ ) N/E facing slopes above 2200 m. Avalanches can reach medium size.

In addition, on steep smooth grassy slopes below 2400 m, naturally triggered glide-snow avalanches are possible at any time of day or night which can reach medium size. Pass through terrain below glide cracks as quickly as possible.

In the afternoon, likelihood of mostly small set loose-snow avalanches rises somewhat on extremely steep SE/S/SW facing slopes. A soft/weak snowpack is an indication of danger.

### Snowpack structure

The snowpack is quite stable. More deeply embedded layers in the old snow (faceted crystals, also melt-freeze crusts) are unlikely to trigger. Strong westerly winds are not transporting much loose snow. Small snowdrift patches lie deposited atop a favourable snowpack surface, although highly irregular (showing impact of warmth and sun below 1500 m and on all sunny slopes, still powdery on shady wind-protected slopes, elsewhere showing signs of wind impact). Wind-exposed terrain is often bare of snow.

The snowpack softens during the course of the day and thus forfeits its firmness.

### Weather

On Saturday in the Tauern and Nockberge, no precipitation. High-altitude clouds will hamper the sunshine and visibility. Stormy W/NW winds will be blowing in some places. At 2000 m: +1 degree; at 3000 m: -2 degrees.

### Outlook

No significant change is expected in avalanche danger levels.

#### Avalanche problems



New snow



Wind drifted snow



Persistent weak layer



Wet snow



Gliding snow



Cornices



no distinct

#### Danger ratings



1

low



2

moderate



3

considerable



4

high



5

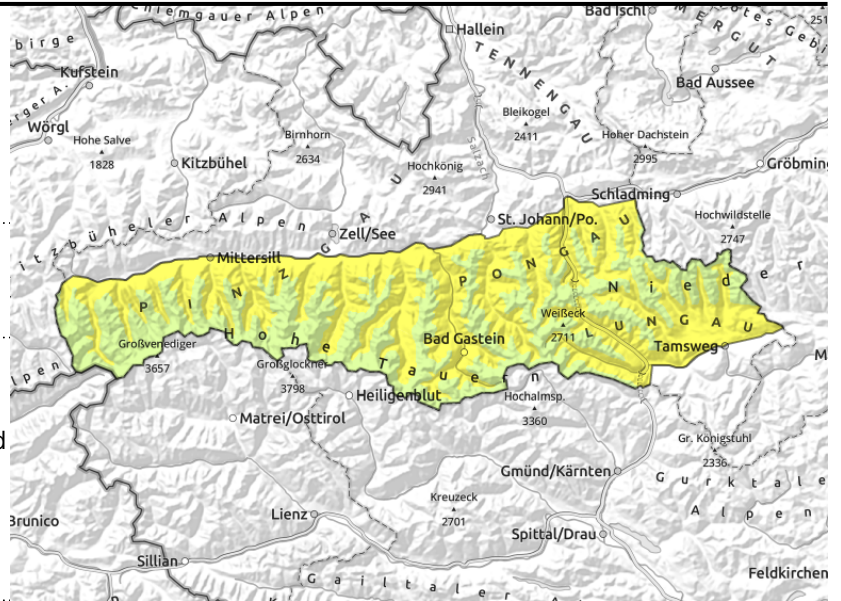
very high

#### Expositions



# Avalanche report for Saturday, 18.02.2023, afternoon

**Glocknergruppe Alpenhauptkamm, Glocknergruppe Nord, Großvenedigergruppe Nord, Großvenedigergruppe Alpenhauptkamm, Goldberggruppe Nord, Goldberggruppe Alpenhauptkamm, Niedere Tauern Nord, Niedere Tauern Alpenhauptkamm, Ankogelgruppe, Muhr, Niedere Tauern Süd**



the warmer and weaker the snowpack, the more likely are wet loose-snow avalanches and warm glide-snow avalanches. Avoid extremely steep south-facing slopes and danger zones.



avoid shallow snow zones and very steep convex zones. Use single descents and safe assembly points to reduce risk.

## Few danger zones for dry slab avalanches. Glide-snow avalanches starting in afternoon.

LOW avalanche danger. In afternoon, MODERATE avalanche danger below 2400m. Fractures in weak layers in lower part of snowpack can in isolated cases be triggered by large additional loading. Transitions from shallow to deep snow are unfavourable on very steep (>35°) N/E facing slopes above 2200 m. Avalanches can reach medium size. In addition, on steep smooth grassy slopes below 2400 m, naturally triggered glide-snow avalanches are possible at any time of day or night which can reach medium size. Pass through terrain below glide cracks as quickly as possible. In the afternoon, likelihood of mostly small set loose-snow avalanches rises somewhat on extremely steep SE/S/SW facing slopes. A soft/weak snowpack is an indication of danger.

### Snowpack structure

The snowpack is quite stable. More deeply embedded layers in the old snow (faceted crystals, also melt-freeze crusts) are unlikely to trigger. Strong westerly winds are not transporting much loose snow. Small snowdrift patches lie deposited atop a favourable snowpack surface, although highly irregular (showing impact of warmth and sun below 1500 m and on all sunny slopes, still powdery on shady wind-protected slopes, elsewhere showing signs of wind impact). Wind-exposed terrain is often bare of snow.

The snowpack softens during the course of the day and thus forfeits its firmness.

### Weather

On Saturday in the Tauern and Nockberge, no precipitation. High-altitude clouds will hamper the sunshine and visibility. Stormy W/NW winds will be blowing in some places. At 2000 m: +1 degree; at 3000 m: -2 degrees.

#### Avalanche problems



#### Danger ratings



#### Expositions

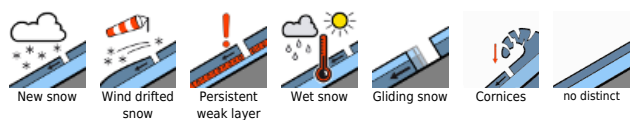


## Outlook

No significant change is expected in avalanche danger levels.

---

### Avalanche problems



### Danger ratings

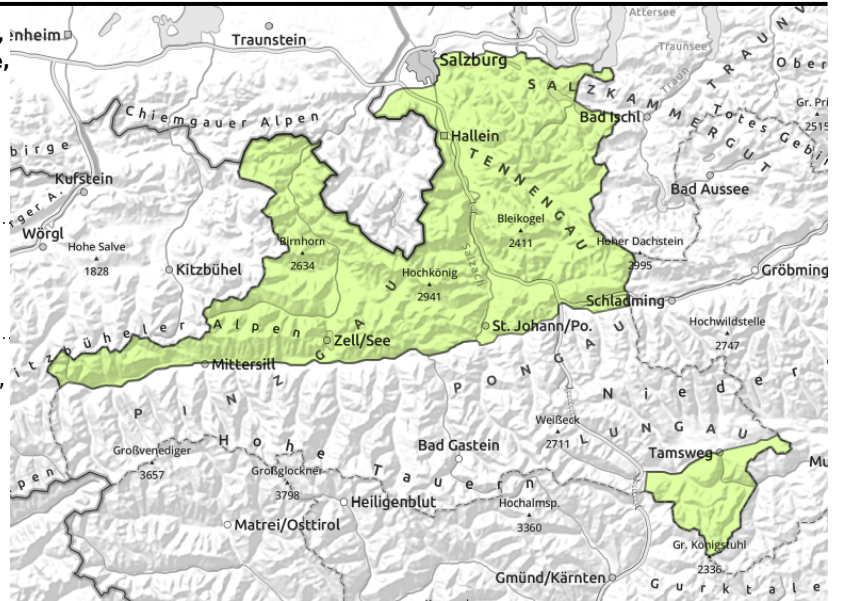


### Expositions



# Avalanche report for Saturday, 18.02.2023, morning

**Loferer und Leoganger Steinberge, Steinernes Meer, Hochkönig, Hagengebirge, Göllstock, Tennengebirge, Gosaukamm, Kitzbüheler Alpen, Glemmtal, Oberpinzgauer Grasberge, Dientner Grasberge, Pongauer Grasberge, Osterhorngruppe, Gamsfeldgruppe, Chiemgauer Alpen, Heutal, Reiteralpe, Untersbergstock, Nockberge**



avoid zones below glide cracks, pass through endanger zones quickly

## Glide-snow + wet loose-snow avalanches starting in afternoon.

LOW avalanche danger. In afternoon, MODERATE avalanche danger below 2400m.

Fractures in weak layers in lower part of snowpack can in isolated cases be triggered by large additional loading. Transitions from shallow to deep snow are unfavourable on very steep (>35°) N/E facing slopes above 2200 m. Avalanches can reach medium size.

In addition, on steep smooth grassy slopes below 2400 m, naturally triggered glide-snow avalanches are possible at any time of day or night which can reach medium size. Pass through terrain below glide cracks as quickly as possible.

In the afternoon, likelihood of mostly small set loose-snow avalanches rises somewhat on extremely steep SE/S/SW facing slopes. A soft/weak snowpack is an indication of danger.

### Snowpack structure

The snowpack is quite stable. More deeply embedded layers in the old snow (faceted crystals, also melt-freeze crusts) are unlikely to trigger. Strong westerly winds are not transporting much loose snow. Small snowdrift patches lie deposited atop a favourable snowpack surface, although highly irregular (showing impact of warmth and sun below 1500 m and on all sunny slopes, still powdery on shady wind-protected slopes, elsewhere showing signs of wind impact). Wind-exposed terrain is often bare of snow.

The snowpack softens during the course of the day and thus forfeits its firmness.

### Weather

On Saturday in the Tauern and Nockberge, no precipitation. High-altitude clouds will hamper the sunshine and visibility. Stormy W/NW winds will be blowing in some places. At 2000 m: +1 degree.

### Outlook

No significant change is expected in avalanche danger levels.

#### Avalanche problems



#### Danger ratings

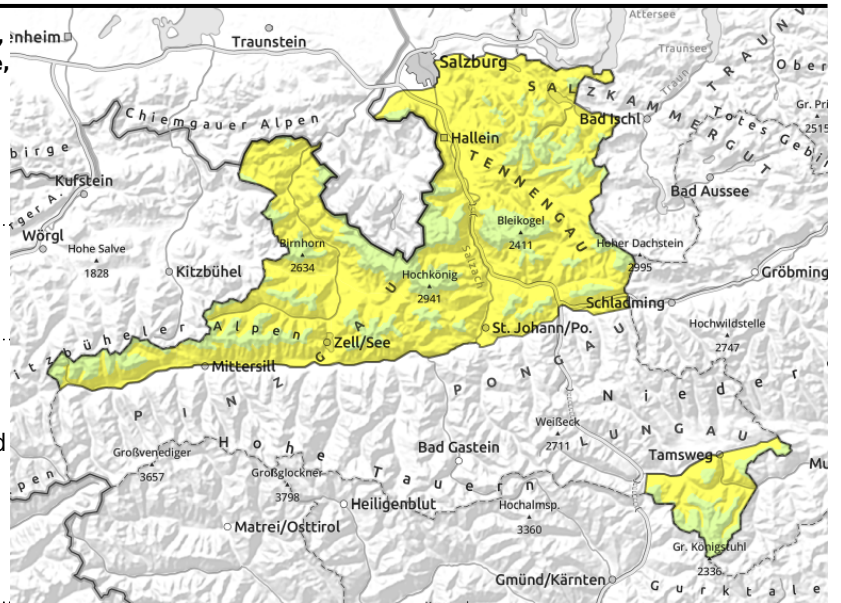


#### Expositions



## Avalanche report for Saturday, 18.02.2023, afternoon

Loferer und Leoganger Steinberge, Steinernes Meer, Hochkönig, Hagengebirge, Göllstock, Tennengebirge, Gosaukamm, Kitzbüheler Alpen, Glemmtal, Oberpinzgauer Grasberge, Dientner Grasberge, Pongauer Grasberge, Osterhorngruppe, Gamsfeldgruppe, Chiemgauer Alpen, Heutal, Reiteralpe, Untersbergstock, Nockberge



the warmer and weaker the snowpack, the more likely are wet loose-snow avalanches and warm glide-snow avalanches. Avoid extremely steep south-facing slopes and danger zones.



avoid zones below glide cracks, pass through endanger zones quickly

### Glide-snow + wet loose-snow avalanches starting in afternoon.

LOW avalanche danger. In afternoon, MODERATE avalanche danger below 2400m.

Fractures in weak layers in lower part of snowpack can in isolated cases be triggered by large additional loading. Transitions from shallow to deep snow are unfavourable on very steep (>35°) N/E facing slopes above 2200 m. Avalanches can reach medium size.

In addition, on steep smooth grassy slopes below 2400 m, naturally triggered glide-snow avalanches are possible at any time of day or night which can reach medium size. Pass through terrain below glide cracks as quickly as possible.

In the afternoon, likelihood of mostly small set loose-snow avalanches rises somewhat on extremely steep SE/S/SW facing slopes. A soft/weak snowpack is an indication of danger.

### Snowpack structure

The snowpack is quite stable. More deeply embedded layers in the old snow (faceted crystals, also melt-freeze crusts) are unlikely to trigger. Strong westerly winds are not transporting much loose snow. Small snowdrift patches lie deposited atop a favourable snowpack surface, although highly irregular (showing impact of warmth and sun below 1500 m and on all sunny slopes, still powdery on shady wind-protected slopes, elsewhere showing signs of wind impact). Wind-exposed terrain is often bare of snow.

The snowpack softens during the course of the day and thus forfeits its firmness.

### Weather

On Saturday in the Tauern and Nockberge, no precipitation. High-altitude clouds will hamper the sunshine and visibility. Stormy W/NW winds will be blowing in some places. At 2000 m: +1 degree.

### Outlook

No significant change is expected in avalanche danger levels.

Translated by Jeffrey McCabe, [www.creativtrans.com](http://www.creativtrans.com)

#### Avalanche problems



#### Danger ratings



#### Expositions

