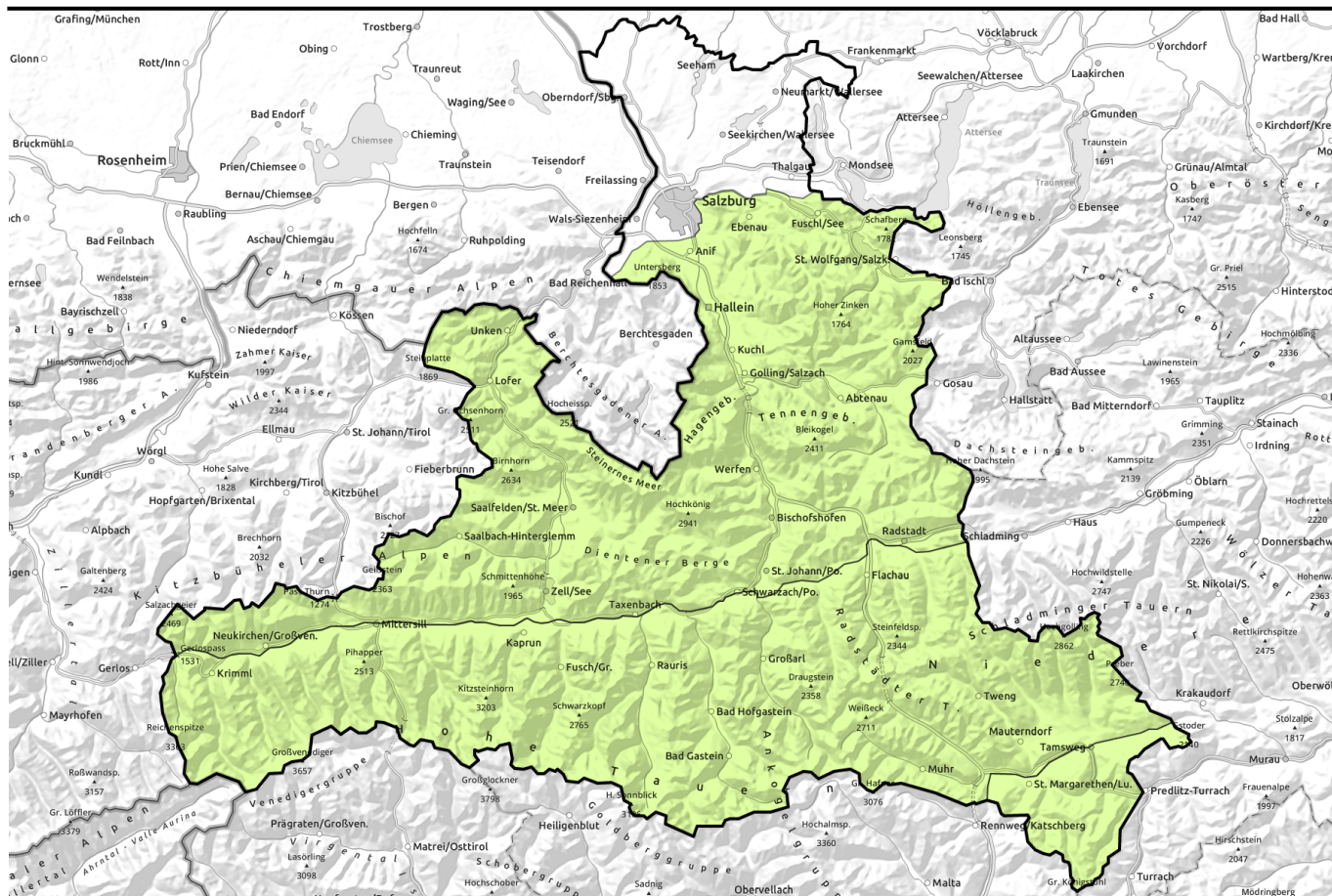


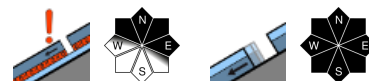
Avalanche report for Friday, 17.02.2023



Low avalanche danger widespread



Glocknergruppe Alpenhauptkamm, Glocknergruppe Nord, Großvenedigergruppe Nord, Großvenedigergruppe Alpenhauptkamm, Goldberggruppe Nord, Goldberggruppe Alpenhauptkamm, Niedere Tauern Nord, Niedere Tauern Alpenhauptkamm, Ankogelgruppe, Muhr, Niedere Tauern Süd



Loferer und Leoganger Steinberge, Steinernes Meer, Hochkönig, Hagengebirge, Göllstock, Tennengebirge, Gosaukamm, Kitzbüheler Alpen, Gemmtal, Oberpinzgauer Grasberge, Dientner Grasberge, Pongauer Grasberge, Osterhorngruppe, Gamsfeldgruppe, Chiemgauer Alpen, Heutal, Reiteralpe, Untersbergstock, Nockberge



Avalanche problems



Danger ratings

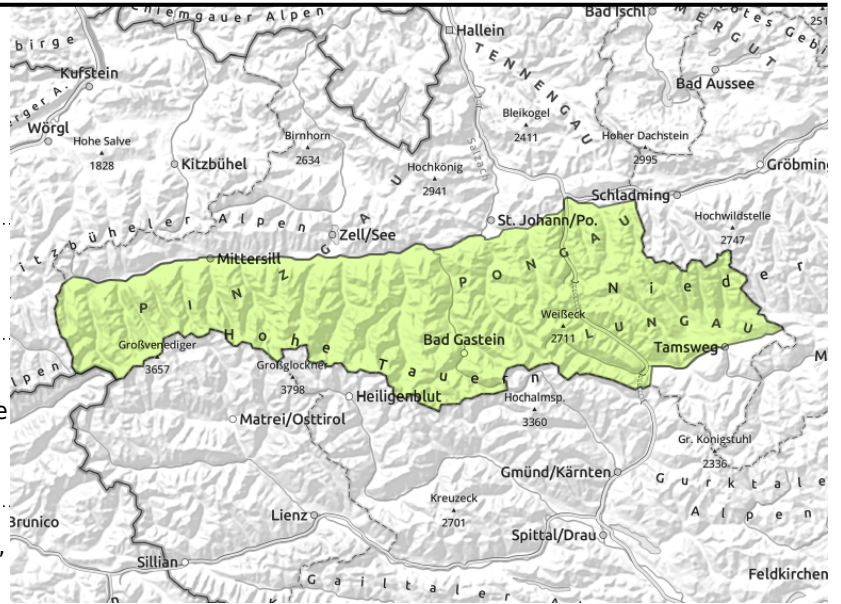


Expositions



Avalanche report for Friday, 17.02.2023

Glocknergruppe Alpenhauptkamm, Glocknergruppe Nord, Großvenedigergruppe Nord, Großvenedigergruppe Alpenhauptkamm, Goldberggruppe Nord, Goldberggruppe Alpenhauptkamm, Niedere Tauern Nord, Niedere Tauern Alpenhauptkamm, Ankogelgruppe, Muhr, Niedere Tauern Süd



caution urged in transitions from shallow to deep snow. Use single descents and safe assembly points to reduce risk.



avoid zones below glide cracks, pass through endanger zones quickly

Few danger zones for dry slab avalanches. Glide-snow problem below 2400 m

LOW avalanche danger.

Fractures in weak layers in lower part of snowpack can in isolated cases be triggered by large additional loading. Transitions from shallow to deep snow are unfavourable on very steep (>35°) N/E facing slopes above 2200 m. Avalanches can reach medium size.

In addition, on steep smooth grassy slopes below 2400 m, naturally triggered glide-snow avalanches are possible at any time of day or night which can reach medium size. Pass through terrain below glide cracks as quickly as possible.

Snowpack structure

The snowpack is quite stable. More deeply embedded layers in the old snow (faceted crystals, also melt-freeze crusts) are unlikely to trigger. Strong westerly winds are not transporting much loose snow. Small snowdrift patches lie deposited atop a favourable snowpack surface, although highly irregular (showing impact of warmth and sun below 1500 m and on all sunny slopes, still powdery on shady wind-protected slopes, elsewhere showing signs of wind impact). Wind-exposed terrain is often bare of snow.

Weather

Peaks and slopes are often shrouded in cloud from which light rainfall is possible especially in the Northern Alps. Snowfall level at 1700 m. In the Tauern and Nockberge, mostly dry and with heavy cloud cover, dispersals at most at midday. Winds brisk from westerly directions, intensifying during the day. At 2000 M. 0 degrees; at 3000 m: -5 degrees.

Outlook

No significant change is expected. Slight daytime cycle of danger of wet-snow avalanches due to mild temperatures and diffuse solar radiation.

Avalanche problems



Danger ratings

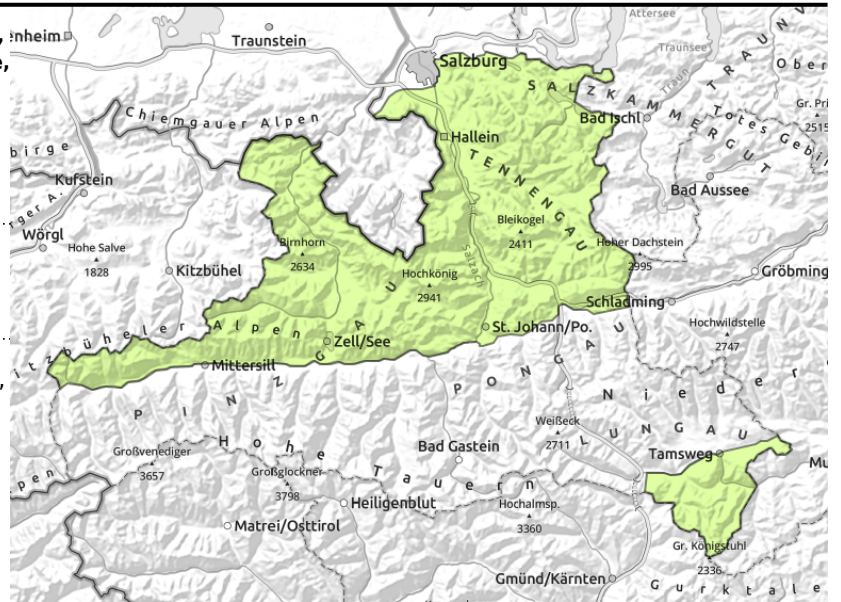


Expositions



Avalanche report for Friday, 17.02.2023

Loferer und Leoganger Steinberge, Steinernes Meer, Hochkönig, Hagengebirge, Göllstock, Tennengebirge, Gosaukamm, Kitzbüheler Alpen, Glemmtal, Oberpinzgauer Grasberge, Dientner Grasberge, Pongauer Grasberge, Osterhorngruppe, Gamsfeldgruppe, Chiemgauer Alpen, Heutal, Reiteralpe, Untersbergstock, Nockberge



avoid zones below glide cracks, pass through endanger zones quickly

Isolated glide-snow avalanches possible

LOW avalanche danger.

On steep, smooth grass-covered slopes below 2400 m, isolated naturally triggered glide-snow avalanches of medium size are possible. Avoid terrain below glide cracks or pass through it quickly.

Snowpack structure

The snowpack is quite stable. Strong westerly winds are not transporting much loose snow. Small snowdrift patches lie deposited atop a favourable snowpack surface, although highly irregular (showing impact of warmth and sun below 1500 m and on all sunny slopes, still powdery on shady wind-protected slopes, elsewhere showing signs of wind impact). Wind-exposed terrain is often bare of snow.

Weather

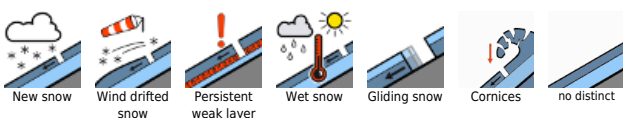
Peaks and slopes are often shrouded in cloud from which light rainfall is possible especially in the Northern Alps. Snowfall level at 1700 m. In the Tauern and Nockberge, mostly dry and with heavy cloud cover, dispersals at most at midday. Winds brisk from westerly directions, intensifying during the day. At 2000 M. 0 degrees; at 3000 m: -5 degrees.

Outlook

No significant change is expected. Slight daytime cycle of danger of wet-snow avalanches due to mild temperatures and diffuse solar radiation.

Translated by Jeffrey McCabe, www.creativtrans.com

Avalanche problems



Danger ratings



Expositions

