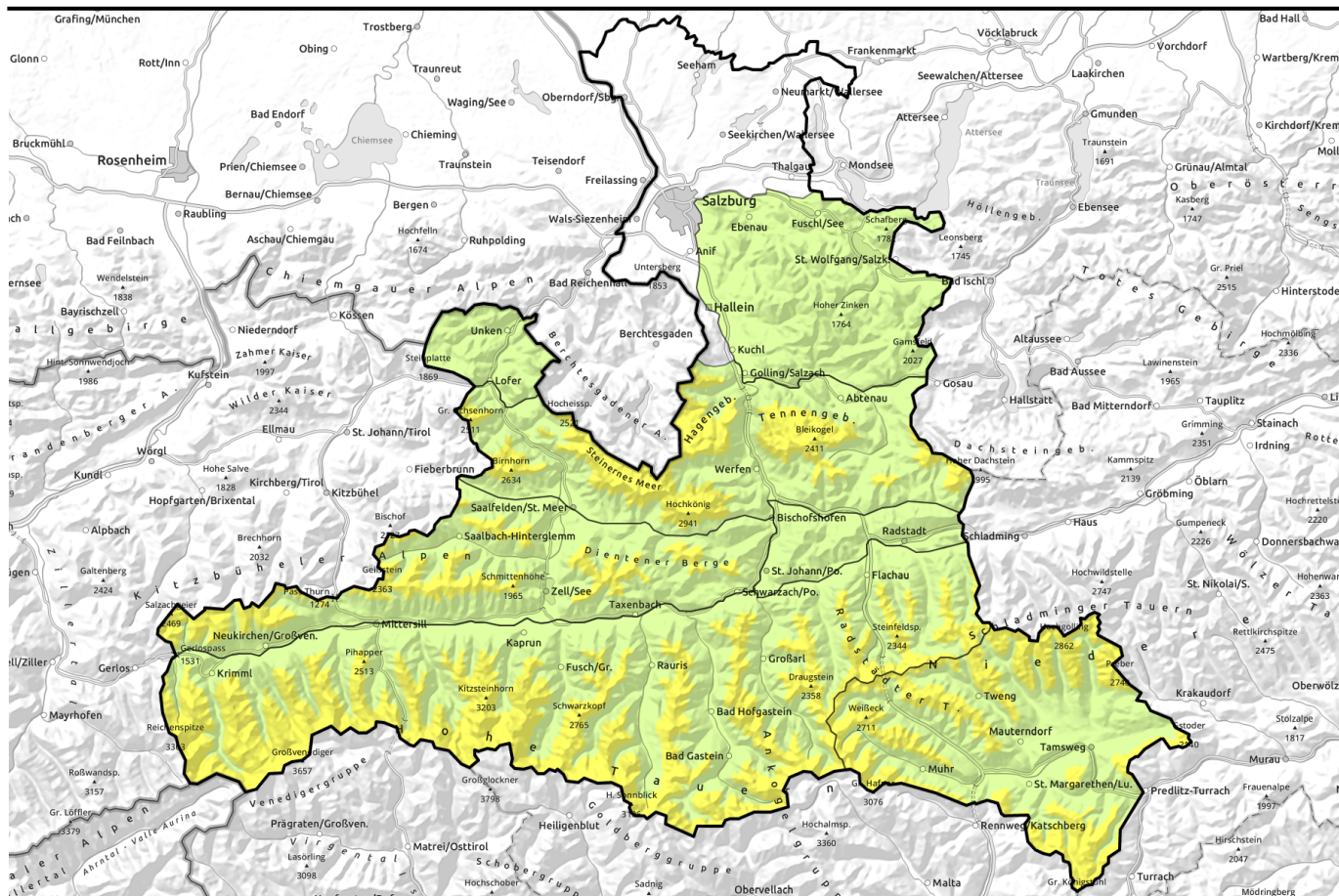


# Avalanche report for Sunday, 12.02.2023



## Isolated danger zones, mostly favourable conditions

	2000 m	Dientner Grasberge, Kitzbüheler Alpen, Glemmtal, Oberpinzgauer Grasberge				
	2000 m	Glocknergruppe Alpenhauptkamm, Glocknergruppe Nord, Großvenedigergruppe Nord, Großvenedigergruppe Alpenhauptkamm, Goldberggruppe Nord, Goldberggruppe Alpenhauptkamm, Niedere Tauern Nord, Niedere Tauern Alpenhauptkamm, Steinernes Meer, Hochkönig, Hagengebirge, Göllstock, Tennengebirge, Gosaukamm, Loferer und Leoganger Steinberge				
		Chiemgauer Alpen, Heutal, Reiteralpe, Osterhorngruppe, Gamsfeldgruppe, Pongauer Grasberge				
	1600 m	Ankogelgruppe, Muhr, Niedere Tauern Süd, Nockberge				

### Avalanche problems



### Danger ratings



### Expositions



# Avalanche report for Sunday, 12.02.2023

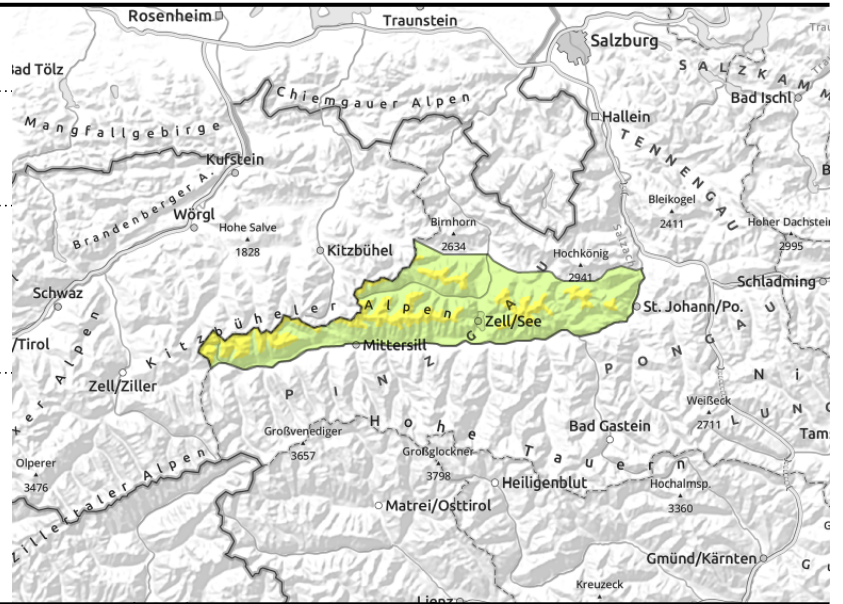
## Dientner Grasberge, Kitzbüheler Alpen, Glemmtal, Oberpinzgauer Grasberge



avoid fresh, easily recognized snowdrift accumulations, esp. on steep slopes and above zones with terrain traps



avoid endangered zones, quickly pass through zones below glide cracks



## Isolated trigger points for slab avalanches + glide-snow problem

Avalanche danger above 2000 m is MODERATE, below that altitude danger is LOW.

The most recent snowdrift accumulations can be triggered even by one person in unfavourable terrain and grow to medium-sized slab avalanches. Danger zones occur mostly in ridgeline terrain and pass areas as well as behind abrupt discontinuities in the terrain on W/N/NE facing slopes. In the foehn lanes this could also apply to east-facing gullies which were filled laterally by winds with drifts. Danger zones are easily recognized and should be circumvented.

In addition, naturally triggered glide-snow avalanches of medium size are possible on steep grassy slopes in all aspects, mostly in south-facing terrain, below 2400 m. Zones below glide cracks should be avoided whenever possible.

### Snowpack structure

Temperatures have risen noticeably, the weekend drifts (north-facing slopes atop loose snowpack) have settled further, the proneness to triggering has receded. Fresh snow and drifts from last weekend are well bonded with the old snowpack. In south-facing terrain a thin melt-freeze crust on steep slopes has formed. In other aspects on leeward slopes there is good powder, Isolated: the snowpack glides away over very steep, mostly sunny grassy slopes from the ground.

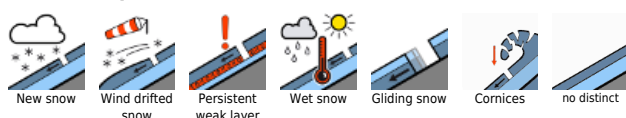
### Weather

On Sunday, clouds to start with, then dispersing. In the Northern Alps in particular and in the Radstadt Tauern, minor snowfall is possible, later on dry. At 2000 m: from -2 to +1 degree. Winds will not disturb.

### Outlook

Ongoing incremental decrease in danger of slab avalanches.

#### Avalanche problems



#### Danger ratings

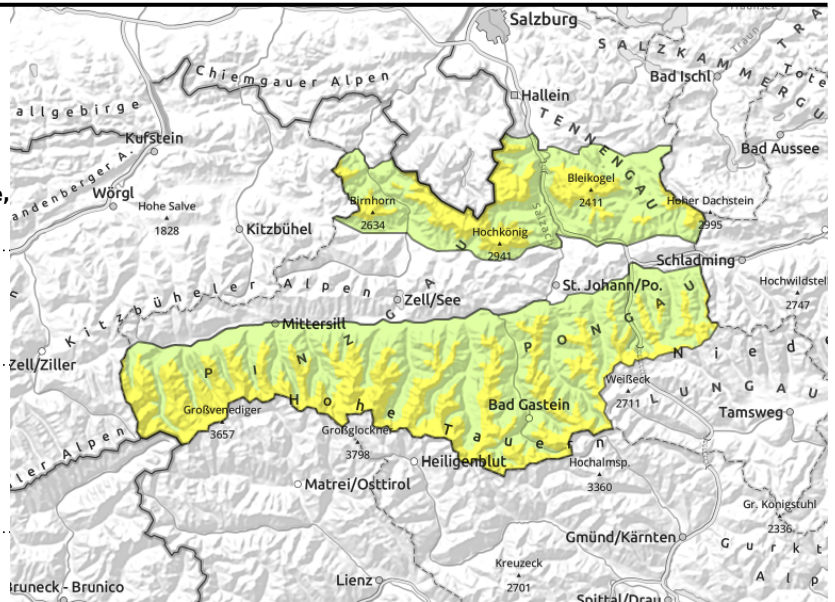


#### Expositions



# Avalanche report for Sunday, 12.02.2023

**Glocknergruppe Alpenhauptkamm, Glocknergruppe Nord, Großvenedigergruppe Nord, Großvenedigergruppe Alpenhauptkamm, Goldberggruppe Nord, Goldberggruppe Alpenhauptkamm, Niedere Tauern Nord, Niedere Tauern Alpenhauptkamm, Steinernes Meer, Hochkönig, Hagengebirge, Göllstock, Tennengebirge, Gosaukamm, Loferer und Leoganger Steinberge**



avoid fresh, easily recognized snowdrift accumulations, esp. on steep slopes and above zones with terrain traps



avoid rocky precipices and steep convex terrain zones. Single descents. Safe assembly points.

## Fresh snowdrift accumulations from NW winds. Weak layer in places.

Avalanche danger rapidly increases above the treeline: above 2000 m danger is MODERATE.

Fresh snowdrift accumulations can in places be triggered even by the weight of one sole skier and release a medium-sized avalanche. Danger zones occur mostly in ridgeline terrain and pass areas as well as behind abrupt discontinuities in the terrain on W/N/NE facing slopes. In the foehn lanes this could also apply to east-facing gullies which were filled laterally by winds with drifts. Danger zones are easily recognized and should be circumvented.

In addition, naturally triggered glide-snow avalanches of medium size are possible on steep grassy slopes in all aspects, mostly in south-facing terrain, below 2400 m. Zones below glide cracks should be avoided whenever possible.

## Snowpack structure

Temperatures have risen noticeably, the weekend drifts (north-facing slopes atop loose snowpack) have settled further, the proneness to triggering has receded. Fresh snow and drifts from last weekend are well bonded with the old snowpack. In south-facing terrain a thin melt-freeze crust on steep slopes has formed. In other aspects on leeward slopes there is good powder, isolated: the snowpack glides away over very steep, mostly sunny grassy slopes from the ground.

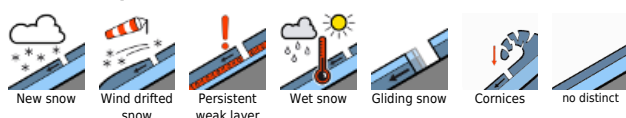
## Weather

On Sunday, clouds to start with, then dispersing. In the Northern Alps in particular and in the Radstadt Tauern, minor snowfall is possible, later on dry. In the Pinzgau, clouds will disperse near midday. At 2000 m: from -2 to +1 degree; at 3000 m: -5 degrees.

## Outlook

No significant change is expected.

### Avalanche problems



### Danger ratings



### Expositions



# Avalanche report for Sunday, 12.02.2023

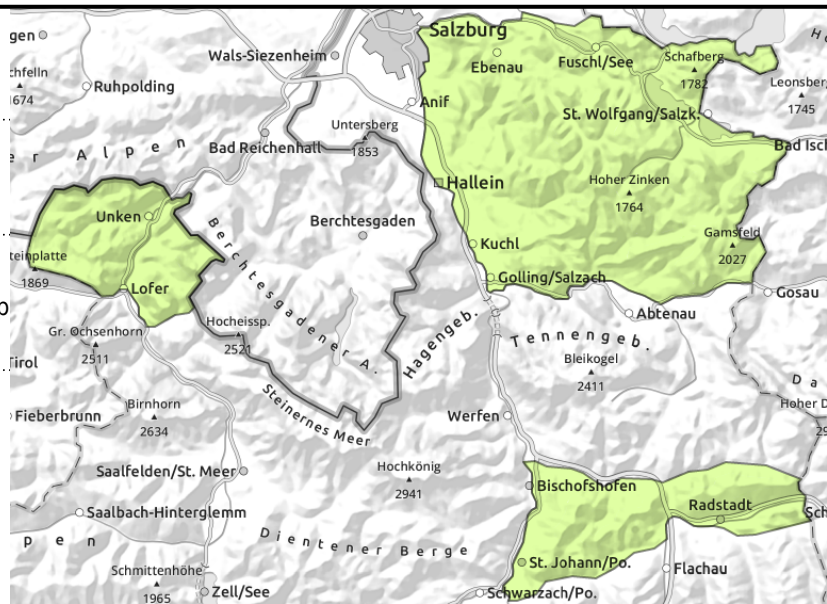
**Chiemgauer Alpen, Heutal, Reiteralpe, Osterhorngruppe, Gamsfeldgruppe, Pongauer Grasberge**



in extremely steep grassy terrain, avoid zones below deep glide-cracks in the snowpack



triggerable in very few spots in extremely steep terrain



## Glide snow on extremely steep grass-covered slopes

Avalanche danger is LOW, only few danger zones for slab avalanches in very steep to extremely steep shady terrain and in gullies where in isolated cases large additional loadint (a fall, stomping, etc.) a fracture can occur in the old snow.

Naturally triggered small glide-snow avalanches are possible on very steep grassy slopes in all aspects, but particularly in extended southern aspects. Avoid areas below glide-cracks.

### Snowpack structure

The snowpack has settled well. Fresh snow and drifts from last weekend are well bonded with the old snowpack. In south-facing terrain a thin melt-freeze crust on steep slopes has formed. In other aspects on leeward slopes there is good powder, Isolated: the snowpack glides away over very steep, mostly sunny grassy slopes from the ground.

### Weather

On Sunday, clouds to start with, then dispersing, visibility mostly sufficient. In the early hours, minor snowfall is possible, later on dry. In the Pinzgau, clouds will disperse near midday. At 2000 m: from -2 to +1 degree. Winds will not disturb.

### Outlook

No significant change is expected.

#### Avalanche problems



#### Danger ratings



#### Expositions



# Avalanche report for Sunday, 12.02.2023

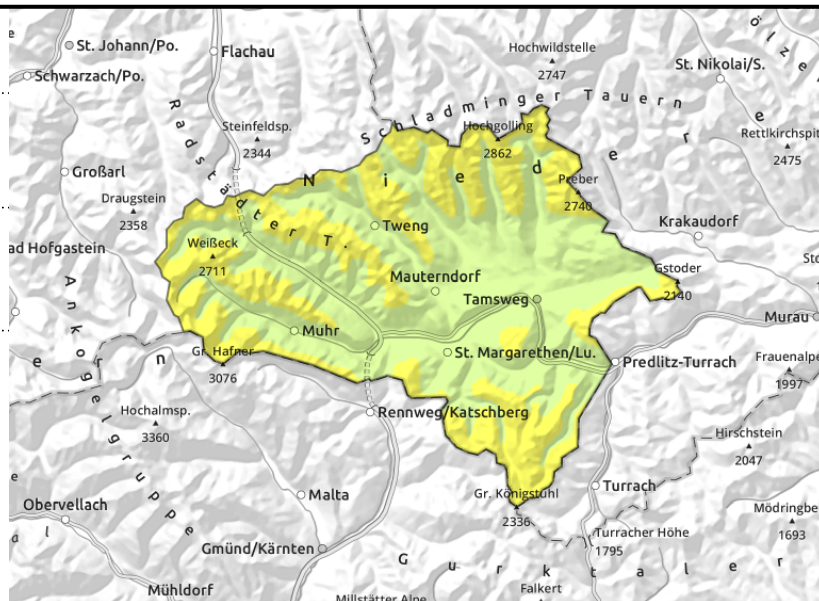
## Ankogelgruppe, Muhr, Niedere Tauern Süd, Nockberge



near ridgelines, behind abrupt discontinuities in the terrain



triggerable in transitions from shallow to deep snow and at edges of gullies and bowls



## Fresh snowdrift accumulations from NW winds

Avalanche danger above the treeline swiftly increases, is MODERATE above 1600 m. Fresh snowdrifts can be triggered by one single skier in places and release a medium-sized avalanche. Danger zones occur esp. in ridgeline zones and pass areas, in gullies and behind abrupt discontinuities in the terrain, esp. on E/S facing slopes. They are easily recognized. In isolated cases, superficial avalanches can fracture down to more deeply embedded layers inside the snowpack. Otherwise, this is likely only in transitions from shallow to deep snow on very steep, convex N/E facing slopes. Avalanches which fracture to deeper layers can grow to large size.

## Snowpack structure

Far higher temperatures at high altitudes, the drifts from mid-week (W//N/NE) have settled, the proneness to triggering has receded. But since Saturday, strong NW winds are transporting the fresh snow, generating new drifts which can be prone to triggering. More deeply embedded layers inside the snowpack of faceted crystals are unlikely to trigger. On very steep sunny slopes a thin crust has formed. In other aspects, also on moderately steep sunny slopes at high altitudes, the snowpack surface is still powdery.

## Weather

On Sunday, clouds to start with, then dispersing, higher peaks will be veiled in fog. Winds will initially be a perturbation at 40-60 km/hr, easing later. At 2000 m: from -2 to +1 degree.

## Outlook

No significant change is expected. On Monday, fresh snowdrifts will be the main problem.

Translated by Jeffrey McCabe, [www.creativtrans.com](http://www.creativtrans.com)

### Avalanche problems



### Danger ratings



### Expositions

