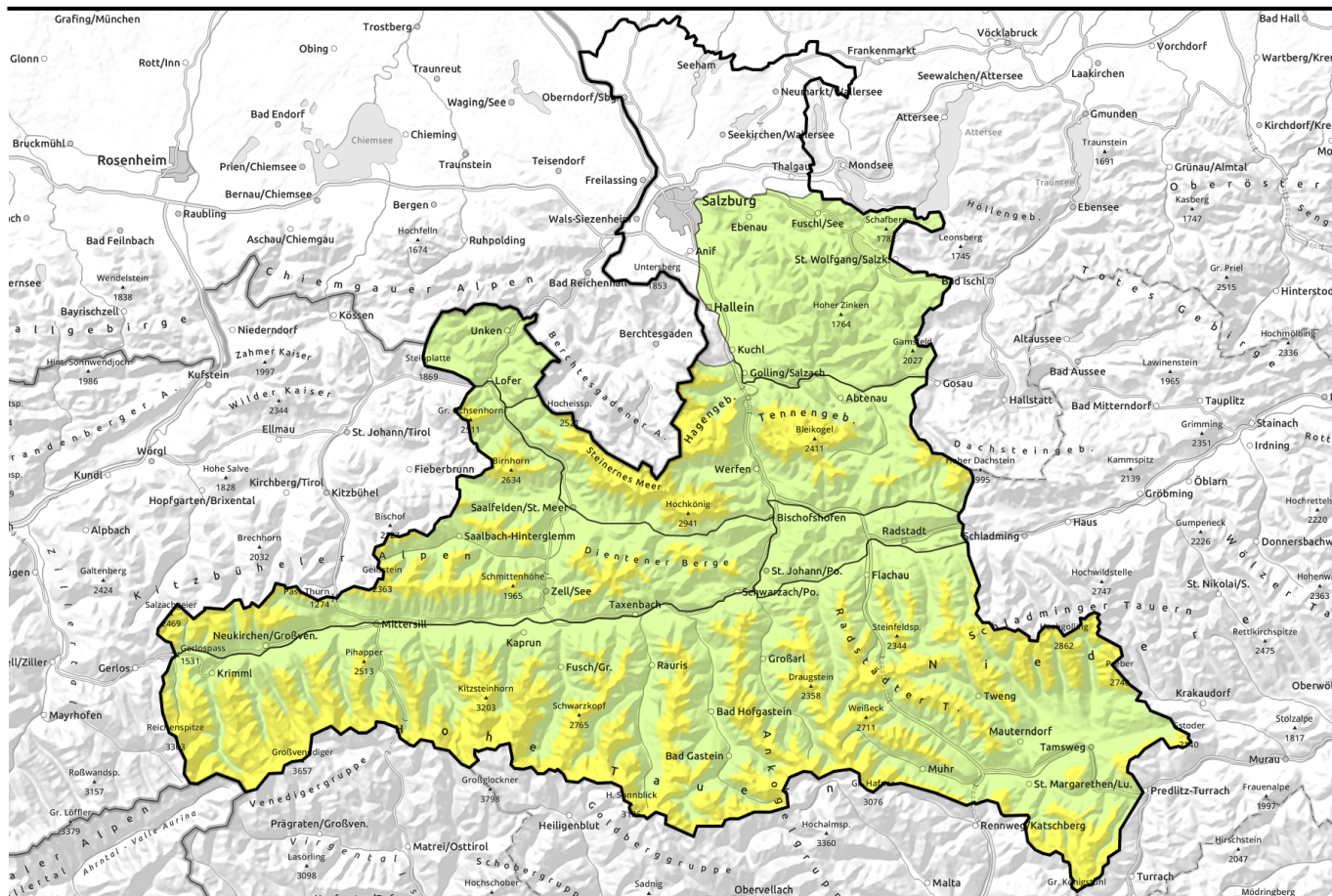


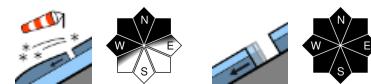
# Avalanche report for Saturday, 11.02.2023



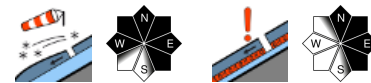
## Rigourously avoid snowdrift accumulations



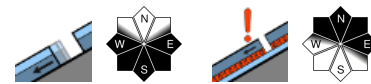
1800 m  
Loferer und Leoganger Steinberge, Dientner Grasberge, Kitzbüheler Alpen, Glemmtal, Oberpinzgauer Grasberge



1800 m  
Glocknergruppe Alpenhauptkamm, Glocknergruppe Nord, Großvenedigergruppe Nord, Großvenedigergruppe Alpenhauptkamm, Goldberggruppe Nord, Goldberggruppe Alpenhauptkamm, Niedere Tauern Nord, Niedere Tauern Alpenhauptkamm, Ankogelgruppe, Muhr, Niedere Tauern Süd, Nockberge, Steinernes Meer, Hochkönig, Hagengebirge, Gölstock, Tennengebirge, Gosaukamm



Chiemgauer Alpen, Heutal, Reiteralpe, Osterhorngruppe, Gamsfeldgruppe, Pongauer Grasberge



### Avalanche problems



### Danger ratings

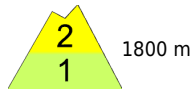


### Expositions



# Avalanche report for **Saturday, 11.02.2023**

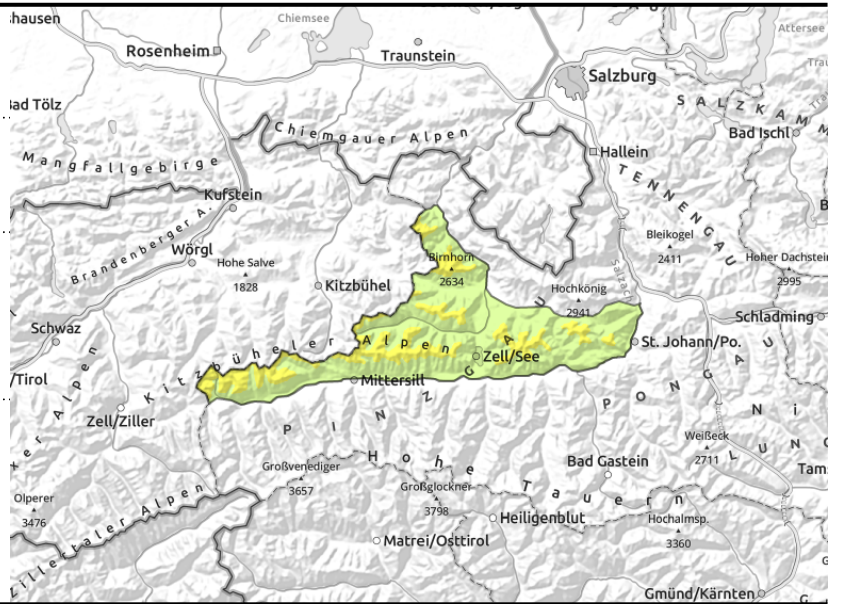
**Loferer und Leoganger Steinberge, Dientner Grasberge, Kitzbüheler Alpen, Glemmtal, Oberpinzgauer Grasberge**



avoid fresh, easily recognized snowdrift accumulations, esp. on steep slopes and above zones with terrain traps



avoid endangered zones, quickly pass through zones below glide cracks



## Main dangers: fresh snowdrift accumulations + glide-snow

Avalanche danger above 1800 m is MODERATE, below that altitude danger is LOW.

The most recent snowdrift accumulations can be triggered even by one person in unfavourable terrain and grow to medium-sized slab avalanches. Danger zones occur mostly in ridgeline terrain and pass areas as well as behind abrupt discontinuities in the terrain on W/N/NE facing slopes. In the foehn lanes this could also apply to east-facing gullies which were filled laterally by winds with drifts. Danger zones are easily recognized and should be circumvented.

In addition, naturally triggered glide-snow avalanches of medium size are possible on steep grassy slopes in all aspects, mostly in south-facing terrain, below 2400 m. Zones below glide cracks should be avoided whenever possible.

### Snowpack structure

The drifts generated over the weekend have settled, lie deposited in W/NE aspects atop a loose snowpack surface where there are prone to triggering in places. Apart from the new drifts the snowpack has settled quite well, fresh snow and drifts from the weekend are well bonded with the old snowpack. On south-facing slopes in steep terrain there is a thin melt-freeze crust on the surface. In other aspects there is often good powder in wind-protected terrain.

### Weather

On Saturday, cloudbanks will pass through in the daytime hours, light will become diffuse but visibility remain adequate. Winds from W/NW will intensify, reach 30-40 km/hr in high altitude open terrain. At 2000 m: -2 degrees.

### Outlook

As W/NW winds intensify, fresh snowdrift accumulations will be generated, while the proneness to triggering of older drifts is receding. No significant change is expected.

#### Avalanche problems



#### Danger ratings

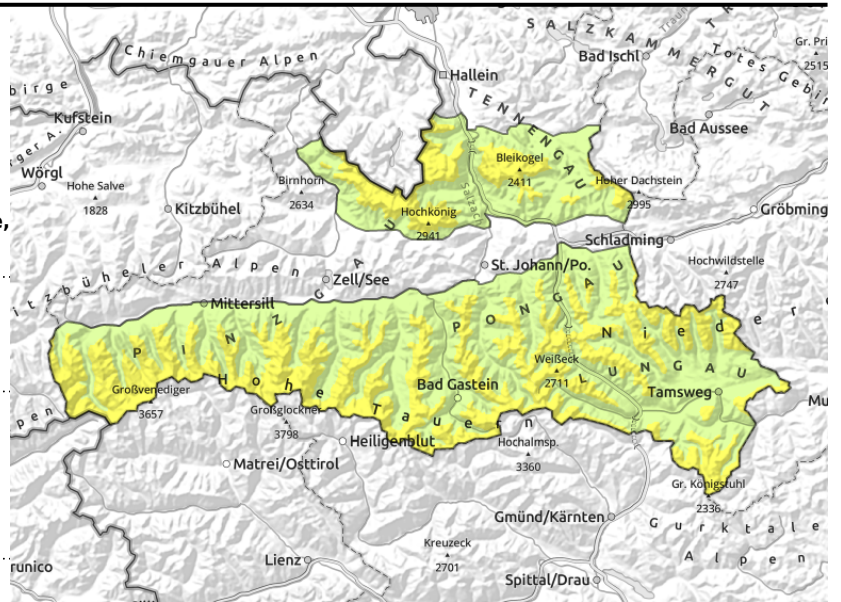


#### Expositions



# Avalanche report for **Saturday, 11.02.2023**

**Glocknergruppe Alpenhauptkamm, Glocknergruppe Nord, Großvenedigergruppe Nord, Großvenedigergruppe Alpenhauptkamm, Goldberggruppe Nord, Goldberggruppe Alpenhauptkamm, Niedere Tauern Nord, Niedere Tauern Alpenhauptkamm, Ankogelgruppe, Muhr, Niedere Tauern Süd, Nockberge, Steinernes Meer, Hochkönig, Hagengebirge, Göllstock, Tennengebirge, Gosaukamm**



avoid fresh, easily recognized snowdrift accumulations, esp. on steep slopes and above zones with terrain traps



avoid rocky precipices and steep convex terrain zones. Single descents. Safe assembly points.

## Fresh snowdrift accumulations. Weak layer in places.

Avalanche danger rapidly increases above the treeline: above 1800 m danger is MODERATE. Fresh snowdrift accumulations can in places be triggered even by the weight of one sole skier and release a medium-sized avalanche. Danger zones occur mostly in ridgeline terrain and pass areas as well as behind abrupt discontinuities in the terrain on W/N/NE facing slopes. In the foehn lanes this could also apply to east-facing gullies which were filled laterally by winds with drifts. Danger zones are easily recognized and should be circumvented. In addition, naturally triggered glide-snow avalanches of medium size are possible on steep grassy slopes in all aspects, mostly in south-facing terrain, below 2400 m. Zones below glide cracks should be avoided whenever possible.

## Snowpack structure

The drifts generated over the weekend (W/N/NE) have settled thanks to higher temperatures, lie deposited atop a loose snowpack surface where there are prone to triggering in places. Apart from the new drifts the snowpack has settled quite well, fresh snow and drifts from the weekend are well bonded with the old snowpack. On south-facing slopes in steep terrain there is a thin melt-freeze crust on the surface. In other aspects there is often good powder in wind-protected terrain.

## Weather

On Saturday, cloudbanks will pass through in the daytime hours, light will become diffuse but visibility remain adequate. Winds from W/NW will intensify, reach 30 km/hr in high altitude open terrain. At 2000 m: -2 degrees; at 3000 m: -7 degrees.

## Outlook

As W/NW winds intensify, fresh snowdrift accumulations will be generated, while the proneness to triggering of older drifts is receding. No significant change is expected.

### Avalanche problems



### Danger ratings



### Expositions



# Avalanche report for **Saturday, 11.02.2023**

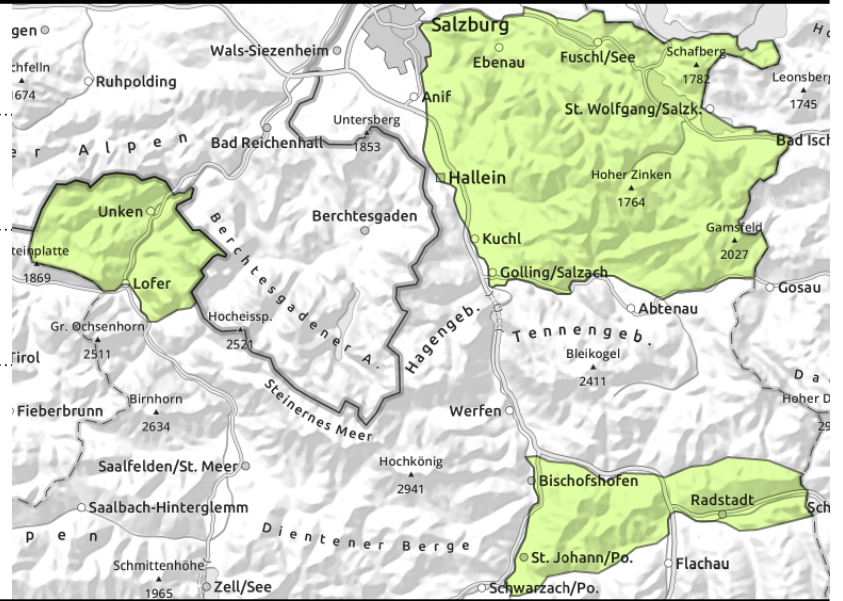
**Chiemgauer Alpen, Heutal, Reiteralpe, Osterhorngruppe, Gamsfeldgruppe, Pongauer Grasberge**



on extremely steep grassy slopes, avoid zone below deep glide cracks



triggerable in few spots in extremely steep terrain



## Glide snow on extremely steep grass-covered slopes

Avalanche danger is LOW, only few danger zones for slab avalanches in very steep to extremely steep shady terrain and in gullies where in isolated cases large additional loadint (a fall, stomping, etc.) a fracture can occur in the old snow.

Naturally triggered small glide-snow avalanches are possible on very steep grassy slopes in all aspects, but particularly in extended southern aspects. Avoid areas below glide-cracks.

### Snowpack structure

The snowpack has settled well. Fresh snow and drifts from the weekend are well bonded with the old snowpack. On south-facing slopes in steep terrain there is a thin melt-freeze crust on the surface. In other aspects there is often good powder in wind-protected terrain.

### Weather

On Saturday, cloudbanks will pass through in the daytime hours, light will become diffuse but visibility remain adequate. Winds from W/NW will intensify, reach 30-40 km/hr in high altitude open terrain. At 1500 m: 0 degrees.

### Outlook

No significant change is expected.

Translated by Jeffrey McCabe, [www.creativtrans.com](http://www.creativtrans.com)

#### Avalanche problems



#### Danger ratings



#### Expositions

