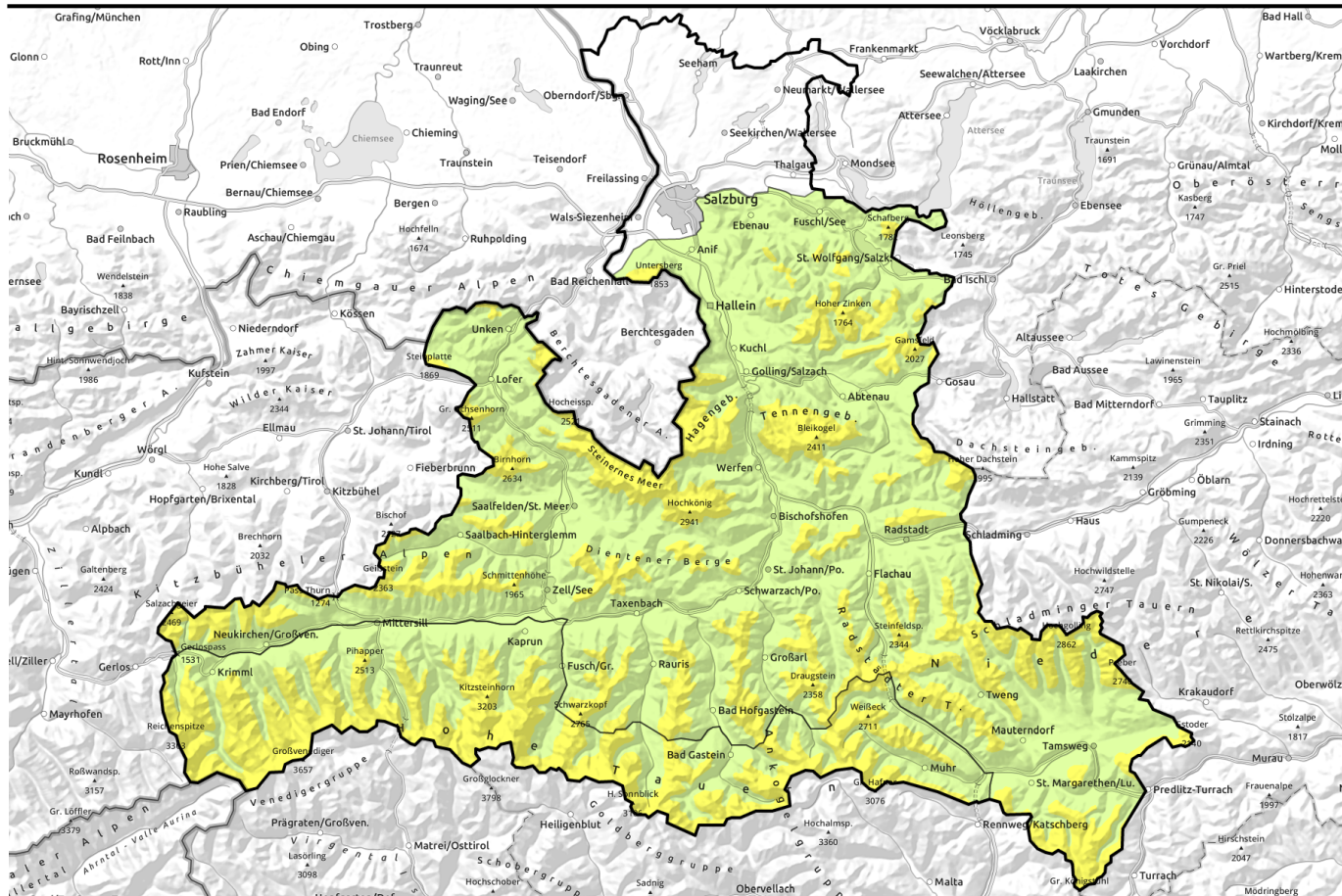


Avalanche report for Wednesday, 08.02.2023, morning

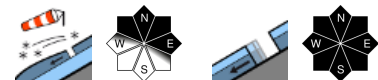


The SE winds are generating fresh snowdrifts on north-facing slopes



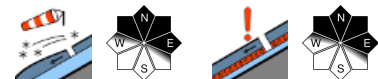
forestline

Osterhorngruppe, Gamsfeldgruppe, Untersbergstock, Chiemgauer Alpen, Heutal, Reiteralpe, Loferer und Leoganger Steinberge, Steinernes Meer, Hochkönig, Hagengebirge, Göllstock, Tennengebirge, Gosaukamm, Pongauer Glasberge, Niedere Tauern Nord, Dientner Grasberge, Kitzbüheler Alpen, Gemmtal, Oberpinzgauer Grasberge, Goldberggruppe Nord, Niedere Tauern Alpenhauptkamm, Niedere Tauern Süd, Nockberge



timberline

Ankogelgruppe, Muhr, Goldberggruppe Alpenhauptkamm, Glocknergruppe Alpenhauptkamm, Glocknergruppe Nord, Großvenedigergruppe Nord, Großvenedigergruppe Alpenhauptkamm



Avalanche problems



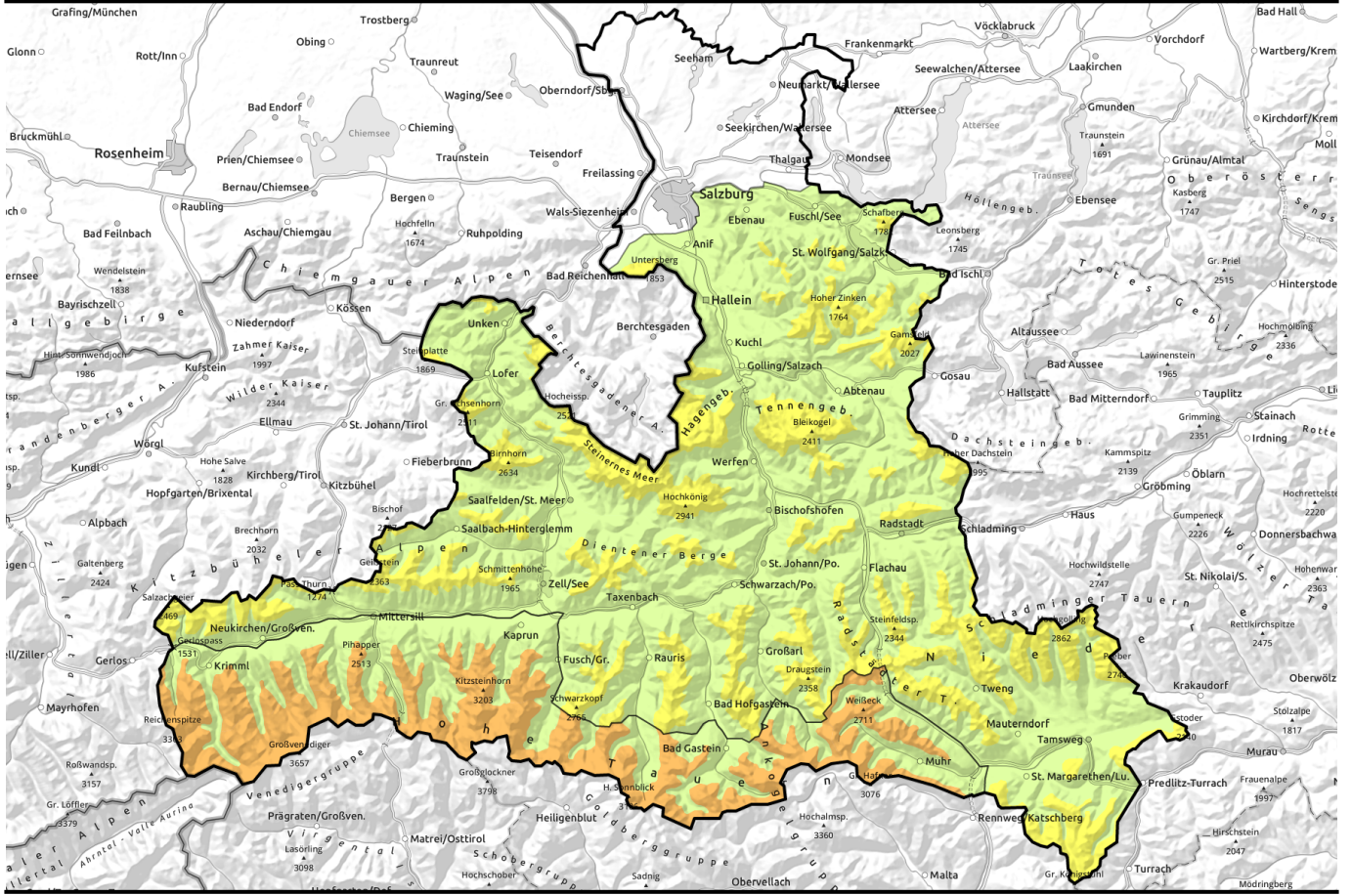
Danger ratings



Expositions



Avalanche report for Wednesday, 08.02.2023, afternoon



Wind aus Südost bildet im Tagesverlauf nordseitig frischen Triebschnee



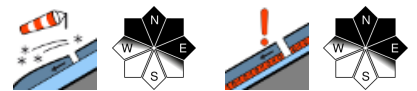
forestline

Osterhorngruppe, Gamsfeldgruppe, Untersbergstock, Chiemgauer Alpen, Heutal, Reiteralpe, Loferer und Leoganger Steinberge, Steinernes Meer, Hochkönig, Hagengebirge, Göllstock, Tennengebirge, Gosaukamm, Pongauer Grasberge, Niedere Tauern Nord, Dientner Grasberge, Kitzbüheler Alpen, Glemmtal, Oberpinzgauer Grasberge, Goldberggruppe Nord, Niedere Tauern Alpenhauptkamm, Niedere Tauern Süd, Nockberge



2000 m

Ankogelgruppe, Muhr, Goldberggruppe Alpenhauptkamm, Glocknergruppe Alpenhauptkamm, Glocknergruppe Nord, Großvenedigergruppe Nord, Großvenedigergruppe Alpenhauptkamm



Avalanche problems



Danger ratings

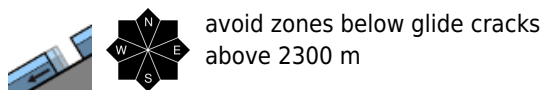
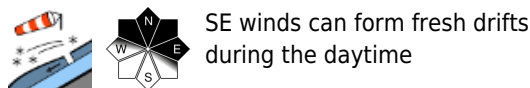
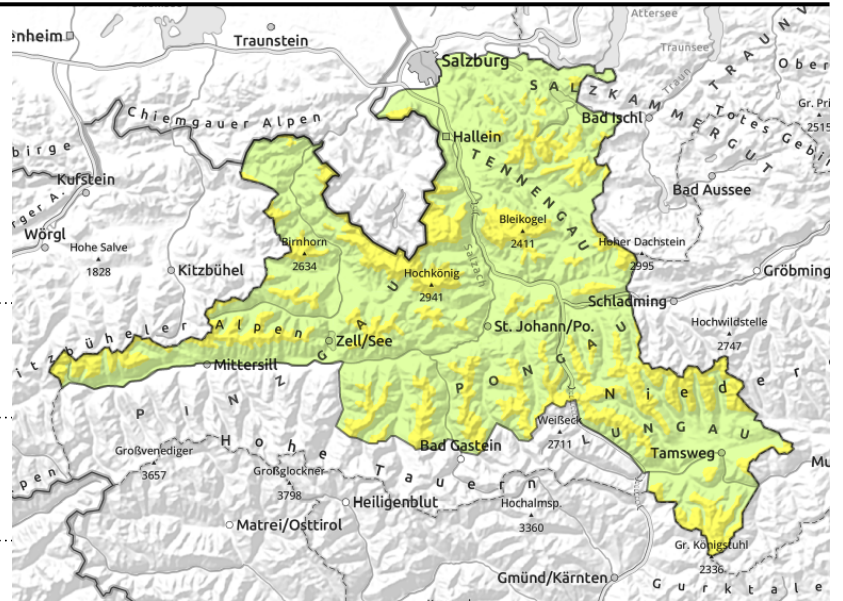


Expositions



Avalanche report for **Wednesday, 08.02.2023**

Osterhorngruppe, Gamsfeldgruppe, Untersbergstock, Chiemgauer Alpen, Heutal, Reiteralpe, Loferer und Leoganger Steinberge, Steinernes Meer, Hochkönig, Hagengebirge, Göllstock, Tennengebirge, Gosaukamm, Pongauer Grasberge, Niedere Tauern Nord, Dientner Grasberge, Kitzbüheler Alpen, Glemmtal, Oberpinzgauer Grasberge, Goldberggruppe Nord, Niedere Tauern Alpenhauptkamm, Niedere Tauern Süd, Nockberge



Some fresh snowdrifts

Avalanche danger above the treeline is MODERATE, below that altitude danger is LOW. The SE winds are forming fresh snowdrift accumulations during the day, most shallow, but triggerable by the weight of one person as a small-to-medium slab avalanche. Caution in north-facing steep terrain: easily recognized fresh snowdrift accumulations. East-facing slope snowdrifts are no longer triggerable. On steep smooth slopes (grassy slopes, rock plates) isolated glide-snow avalanches (mostly small-to-medium) can trigger. Avoid terrain below glide cracks.

Snowpack structure

The snowpack was able to settle, the layers are well bonded to one another. Often the only weak layer is the link between the ground and the glide-layer of the snowpack. There are almost no weak layers inside the snowpack, if at all then on high altitude shady slopes. On sunny slopes in steep terrain, a thin melt-freeze crust has formed. The SE winds will transport the powder to north-facing slopes and deposit it atop loose snow and surface hoar.

Weather

On Wednesday, good visibility and sunshine. During the day the SE winds will strengthen, reach 50 km/hr in Niedere Tauern in the afternoon, elsewhere 30 km/hr. At 2000 m: -8 degrees.

Outlook

Also on Thursday, fresh drifts require attentiveness. Winds on Wednesday-to-Thursday will be strong (60 km/hr), then slacken off on Thursday.

Avalanche problems



Danger ratings

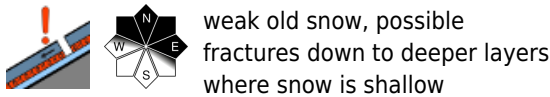
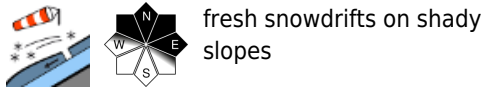
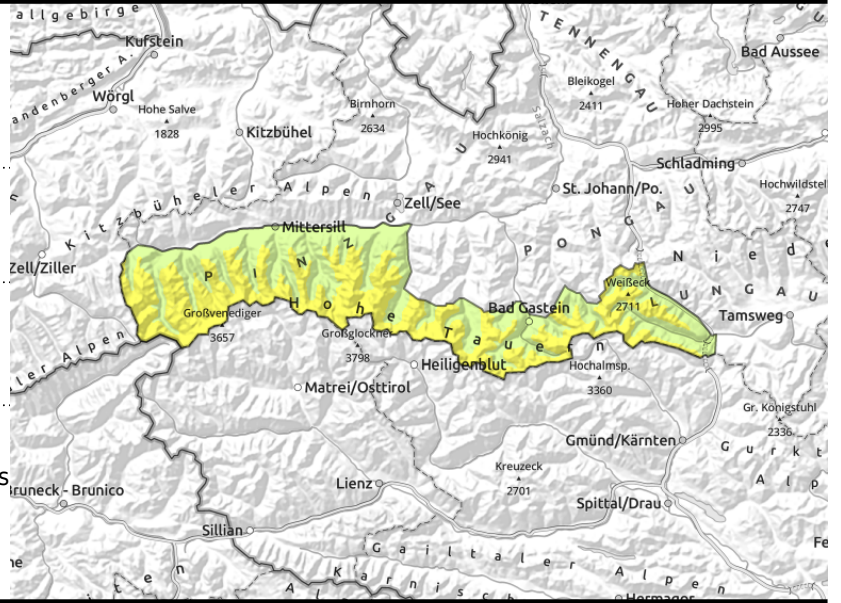


Expositions



Avalanche report for Wednesday, 08.02.2023, morning

Ankogelgruppe, Muhr, Goldberggruppe
 Alpenhauptkamm, Glocknergruppe
 Alpenhauptkamm, Glocknergruppe Nord,
 Großvenedigergruppe Nord, Großvenedigergruppe
 Alpenhauptkamm



Avalanche danger will rise from MODERATE to CONSIDERABLE at high and high alpine altitudes. The SE winds are forming fresh snowdrift accumulations during the day, most shallow, but triggerable by the weight of one person as a small-to-medium slab avalanche. Caution in north-facing steep terrain: easily recognized fresh snowdrift accumulation. East-facing slope snowdrifts are no longer triggerable.

On steep smooth slopes (grassy slopes, rock plates) isolated glide-snow avalanches (mostly small-to-medium) can trigger. Avoid terrain below glide cracks.

Snowpack structure

The snowpack was able to settle, the layers are well bonded to one another. Often the only weak layer is the link between the ground and the glide-layer of the snowpack. There are almost no weak layers inside the snowpack, if at all then on high altitude shady slopes. On sunny slopes in steep terrain, a thin melt-freeze crust has formed. The SE winds will transport the powder to north-facing slopes and deposit it atop loose snow and surface hoar.

Weather

On Wednesday, good visibility and sunshine. During the day the SE winds will strengthen, reach 50 km/hr in Niedere Tauern in the afternoon, elsewhere 30 km/hr. At 2000 m: -8 degrees; at 3000 m: -14 degrees.

Outlook

Also on Thursday, fresh drifts require attentiveness. Winds on Wednesday-to-Thursday will be strong (60 km/hr), then slacken off on Thursday.

Avalanche problems



Danger ratings

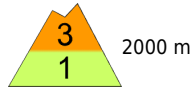


Expositions



Avalanche report for Wednesday, 08.02.2023, afternoon

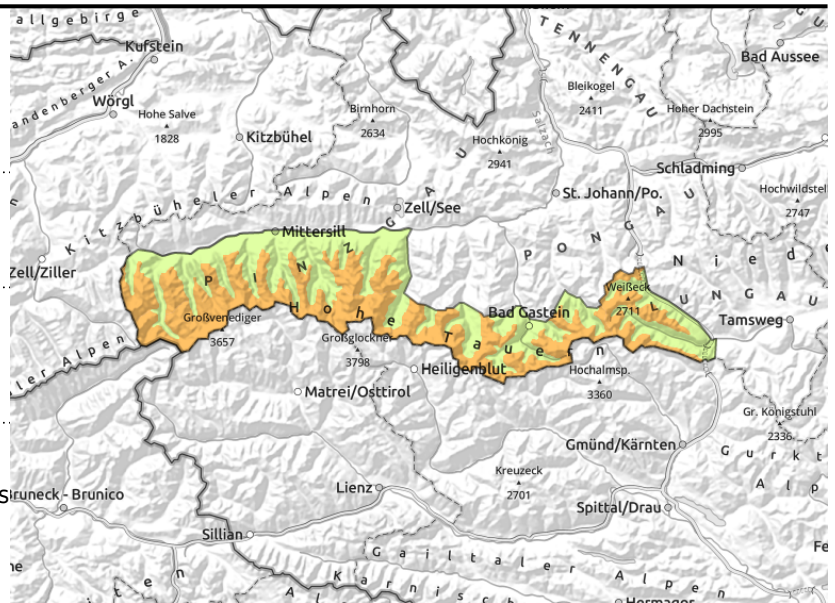
**Ankogelgruppe, Muhr, Goldberggruppe
Alpenhauptkamm, Glocknergruppe
Alpenhauptkamm, Glocknergruppe Nord,
Großvenedigergruppe Nord, Großvenedigergruppe
Alpenhauptkamm**



Increasing snowdrift accumulations. Caution in foehn lanes.



weak old snow, possible fractures down to deeper layers where snow is shallow



Avalanche danger will rise from MODERATE to CONSIDERABLE at high and high alpine altitudes. The SE winds are forming fresh snowdrift accumulations during the day, most shallow, but triggerable by the weight of one person as a small-to-medium slab avalanche. Caution in north-facing steep terrain: easily recognized fresh snowdrift accumulations. East-facing slope snowdrifts are no longer triggerable.

On steep smooth slopes (grassy slopes, rock plates) isolated glide-snow avalanches (mostly small-to-medium) can trigger. Avoid terrain below glide cracks.

Snowpack structure

The snowpack was able to settle, the layers are well bonded to one another. Often the only weak layer is the link between the ground and the glide-layer of the snowpack. There are almost no weak layers inside the snowpack, if at all then on high altitude shady slopes. On sunny slopes in steep terrain, a thin melt-freeze crust has formed. The SE winds will transport the powder to north-facing slopes and deposit it atop loose snow and surface hoar.

Weather

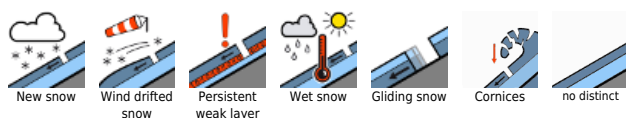
On Wednesday, good visibility and sunshine. During the day the SE winds will strengthen, reach 50 km/hr in Niedere Tauern in the afternoon, elsewhere 30 km/hr. At 2000 m: -8 degrees; at 3000 m: -14 degrees.

Outlook

Also on Thursday, fresh drifts require attentiveness. Winds on Wednesday-to-Thursday will be strong (60 km/hr), then slacken off on Thursday.

Translated by Jeffrey McCabe, www.creativtrans.com

Avalanche problems



Danger ratings



Expositions

