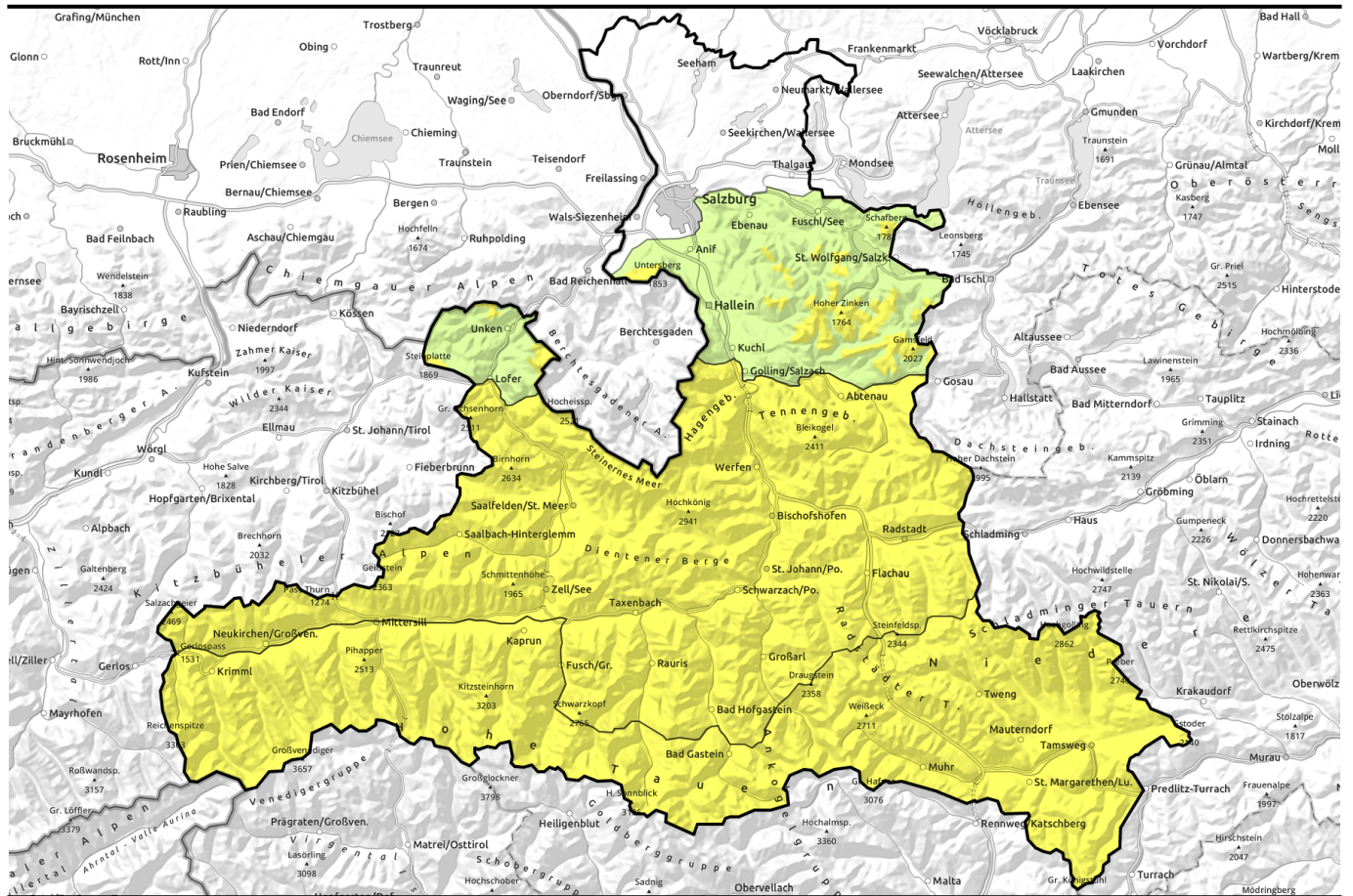



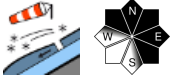

Avalanche report for Tuesday, 07.02.2023



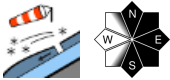

Assess very critically: very steep gullies and trenches

- 


forestline
Chiemgauer Alpen, Heutal, Reiteralpe, Untersbergstock, Osterhorngruppe, Gamsfeldgruppe


- 

Loferer und Leoganger Steinberge, Kitzbüheler Alpen, Glemmtal, Oberpinzgauer Grasberge, Dientner Grasberge, Steinernes Meer, Hochkönig, Hagengebirge, Göllstock, Tennengebirge, Gosaukamm, Pongauer Grasberge, Niedere Tauern Nord, Goldberggruppe Nord


- 

Großvenedigergruppe Nord, Glocknergruppe Nord, Großvenedigergruppe Alpenhauptkamm, Glocknergruppe Alpenhauptkamm, Goldberggruppe Alpenhauptkamm, Niedere Tauern Alpenhauptkamm, Ankogelgruppe, Muhr, Niedere Tauern Süd, Nockberge



Avalanche problems



Danger ratings



Expositions

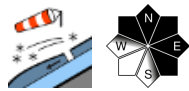


Avalanche report for Tuesday, 07.02.2023

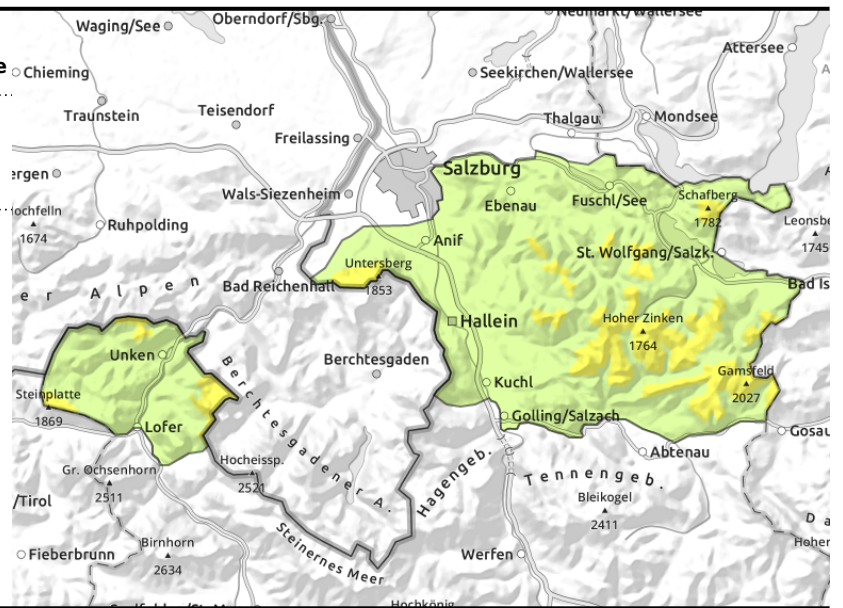
Chiemgauer Alpen, Heutal, Reiteralpe, Untersbergstock, Osterhorngruppe, Gamsfeldgruppe



forestline



ridge snowdrifts



Well settled snowpack

Avalanche danger above 1400 m is MODERATE, below that altitude danger is LOW.

The older snowdrifts are triggerable by large additional loading, in very steep terrain by minimum additional loading. Most critical: N/E facing slopes and gullies. Small-to-medium slab avalanches most triggerable in transitions from shallow to deep snow.

Naturally triggered small glide-snow avalanches are possible on very steep grassy slopes.

Snowpack structure

The snowpack was able to settle, bonding between layers is generally good. Some places have powder.

Weather

On Tuesday, lots of sunshine and good visibility. Hardly any wind. At 2000 m: -7 degrees.

Outlook

As a result of easterly winds on Wednesday, small ridgeline snowdrifts will accumulate.

Avalanche problems



Danger ratings

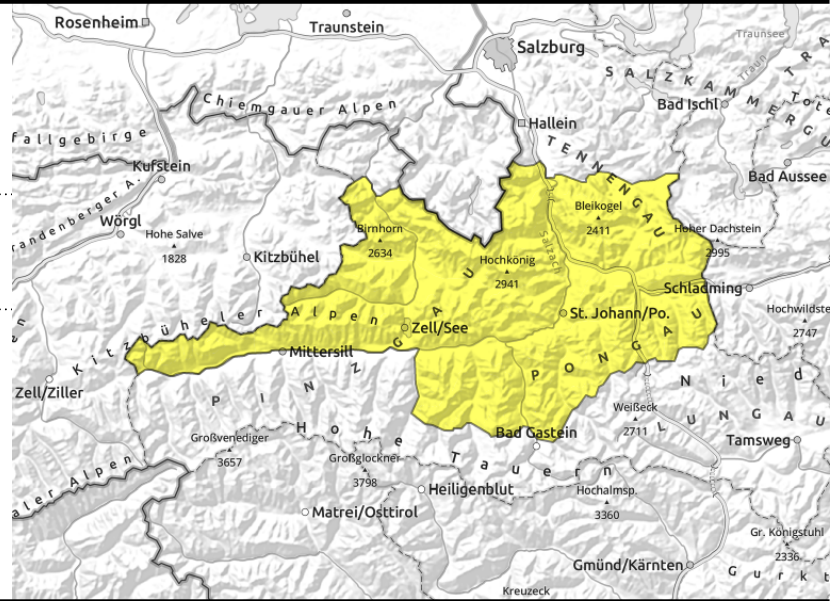


Expositions



Avalanche report for **Tuesday, 07.02.2023**

Loferer und Leoganger Steinberge, Kitzbüheler Alpen, Glemmtal, Oberpinzgauer Grasberge, Dientner Grasberge, Steinernes Meer, Hochkönig, Hagengebirge, Göllstock, Tennengebirge, Gosaukamm, Pongauer Grasberge, Niedere Tauern Nord, Goldberggruppe Nord



ridgeline snowdrift accumulations

Snowpack has settled well

Avalanche danger is MODERATE.

To trigger a slab avalanche, generally large additional loading is necessary, or else in very steep terrain. Also steep gullies and terrain traps such as steep trenches should be avoided. Triggered avalanches are generally small-to-medium sized, in isolated cases they can be large. Most danger zones are in east-facing terrain, then in N/S facing terrain. Most critical are transitions from shallow to deep snow, e.g. in entries into gullies and bowls or at marked discontinuities in the terrain. Naturally triggered small glide-snow avalanches are possible on very steep grassy slopes. In sunny, steep rocky terrain, isolated small-to-medium loose-snow avalanches are possible.

Snowpack structure

The snowpack was able to settle, bonding between layers is generally good. Some places have powder.

Weather

On Tuesday, lots of sunshine and good visibility. Hardly any wind. At 2000 m: -7 degrees, at 3000 m: -14 degrees.

Outlook

As a result of easterly winds on Wednesday, small ridgeline snowdrifts will accumulate.

Avalanche problems



Danger ratings

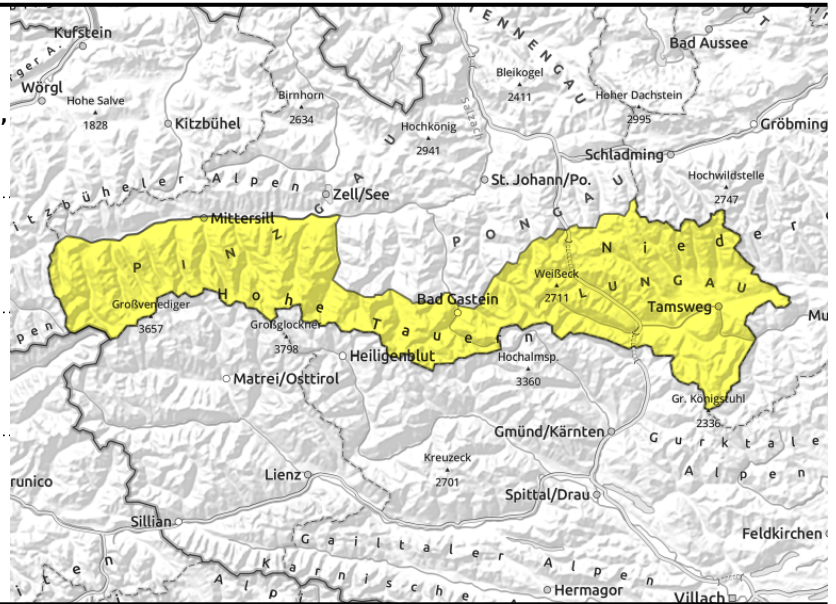


Expositions



Avalanche report for Tuesday, 07.02.2023

Großvenedigergruppe Nord, Glocknergruppe Nord, Großvenedigergruppe Alpenhauptkamm, Glocknergruppe Alpenhauptkamm, Goldberggruppe Alpenhauptkamm, Niedere Tauern Alpenhauptkamm, Ankogelgruppe, Muhr, Niedere Tauern Süd, Nockberge



near to and distant from ridgelines



weak old snow; where snow is shallow it can fracture deep

Moderate avalanche danger but at upper part of that danger level

Avalanche danger is MODERATE.

To trigger a slab avalanche, generally large additional loading is necessary, or else in very steep terrain. Also steep gullies and terrain traps such as steep trenches should be avoided. Triggered avalanches are generally small-to-medium sized, in isolated cases they can be large. Most danger zones are in east-facing terrain, then in N/S facing terrain. Most critical are transitions from shallow to deep snow, e.g. in entries into gullies and bowls or at marked discontinuities in the terrain. Naturally triggered small glide-snow avalanches are possible on very steep grassy slopes. In sunny, steep rocky terrain, isolated small-to-medium loose-snow avalanches are possible.

Snowpack structure

The snowpack was able to settle. Bonding of recent snow is not good. Also inside the old snowpack are faceted layers near ground level.

Weather

On Tuesday, lots of sunshine and good visibility. Hardly any wind. At 2000 m: -7 degrees, at 3000 m: -13 degrees.

Outlook

On Wednesday, S/SE winds will generate new snowdrift accumulations.

Translated by Jeffrey McCabe, www.creativtrans.com

Avalanche problems



Danger ratings



Expositions

