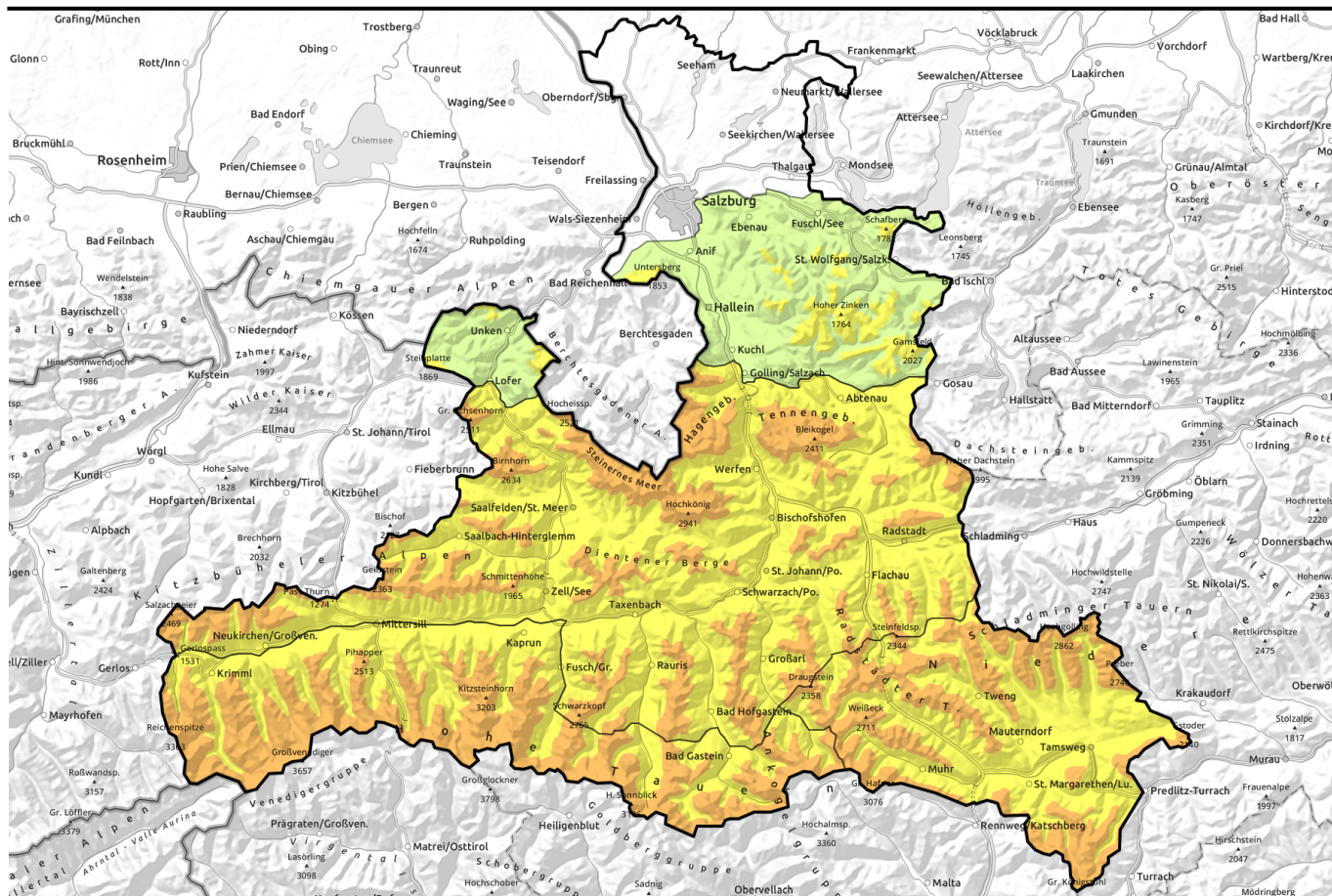


Avalanche report for Monday, 06.02.2023



Snowpack shows huge wind impact

| | | |
|--|---------------------------------------------------------------------------------------------------------------------------------------------------------------------------------------------------------------------------------------------------------------------------|--|
| | <p>1400 m Osterhorngruppe, Gamsfeldgruppe, Untersbergstock, Chiemgauer Alpen, Heutal, Reiteralpe</p> | |
| | <p>2000 m Loferer und Leoganger Steinberge, Steinernes Meer, Hochkönig, Hagengebirge, Göllstock, Tennengebirge, Gosaukamm, Pongauer Grasberge, Dientner Grasberge, Kitzbüheler Alpen, Glemmtal, Oberpinzgauer Grasberge, Niedere Tauern Nord, Goldberggruppe Nord</p> | |
| | <p>forestline Niedere Tauern Alpenhauptkamm, Ankogelgruppe, Muhr, Niedere Tauern Süd, Nockberge</p> | |
| | <p>2200 m Goldberggruppe Alpenhauptkamm, Glocknergruppe Alpenhauptkamm, Großvenedigergruppe Alpenhauptkamm, Großvenedigergruppe Nord, Glocknergruppe Nord</p> | |

Avalanche problems



Danger ratings



Expositions

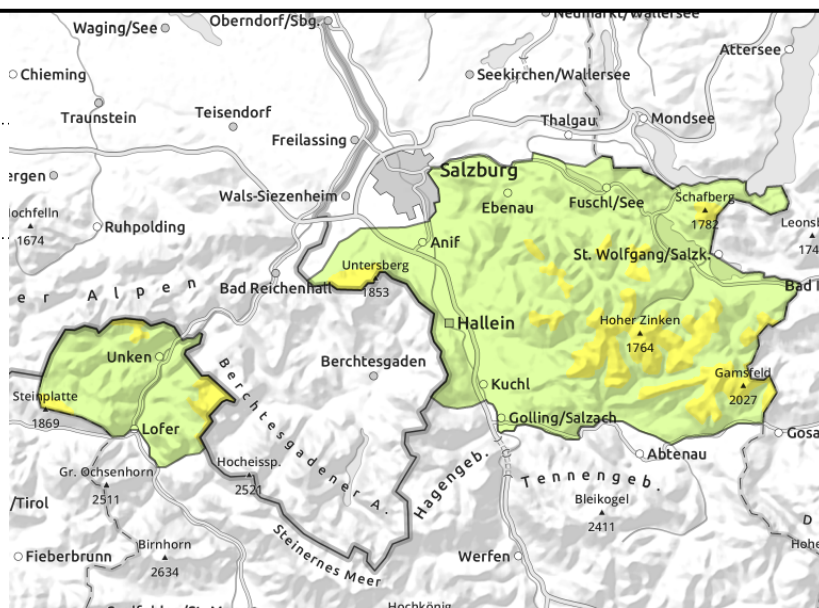


Avalanche report for Monday, 06.02.2023

Osterhorngruppe, Gamsfeldgruppe, Untersbergstock, Chiemgauer Alpen, Heutal, Reiteralpe



near to and distant from ridgelines, particularly by large additional loading



Snowpack is settling well

Avalanche danger above 1400 m is MODERATE, below that altitude danger is LOW. The older snowdrifts are generally triggerable by large additional loading or in extremely steep terrain. Most critical are north and east-facing slopes and gullies. Most likely is a small-to-medium slab avalanche triggering in transitions from shallow to deeper snow. Naturally triggered small glide-snow avalanches are possible on very steep grassy slopes.

Snowpack structure

The snowpack was able to settle on Sunday. Bonding of fresh snow and drifts to the old snowpack is generally adequate.

Weather

On Monday, generally adequate visibility, but some high altitude cloudbanks will pass through, hardly any sunshine. Little wind. At 2000 m: 12 degrees.

Outlook

Avalanche danger will further recede.

Avalanche problems



Danger ratings

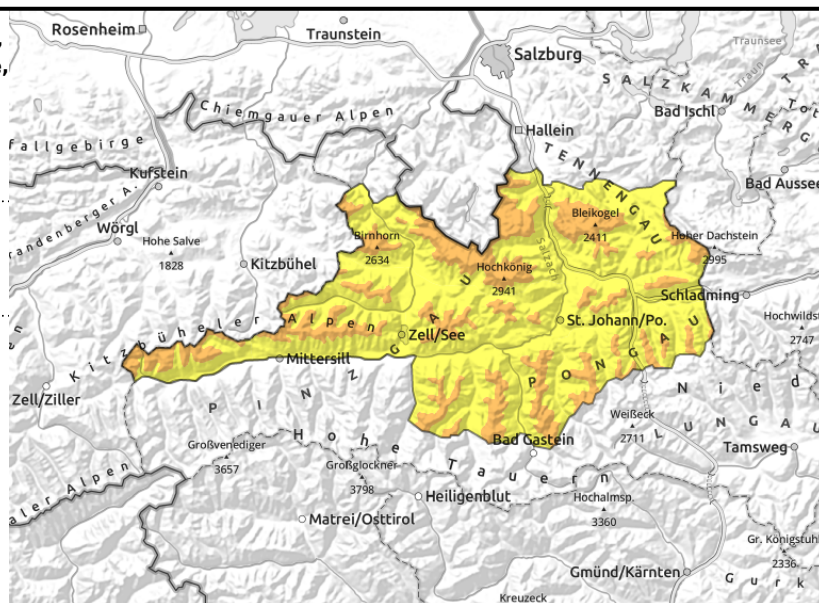
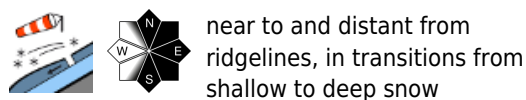


Expositions



Avalanche report for Monday, 06.02.2023

Loferer und Leoganger Steinberge, Steinernes Meer, Hochkönig, Hagengebirge, Göllstock, Tennengebirge, Gosaukamm, Pongauer Grasberge, Dientner Grasberge, Kitzbüheler Alpen, Glemmtal, Oberpinzgauer Grasberge, Niedere Tauern Nord, Goldberggruppe Nord



Special caution urged at entries into gullies and bowls

Avalanche danger is CONSIDERABLE above 2000 m, below that altitude danger is MODERATE. A slab can be triggered even by the weight of one single person in palcers. At intermediate altitudes, generally in extremely steep terrain (gullies, grooves) the weight of one person is sufficient. Most critical: E-facing slopes, on N/S facing slopes, isolated triggerings are possible. Transitions from shallow to deep snow require high attentiveness. Avalanches mostly small-to-medium, in isolated cases large-sized.

Naturally triggered small glide-snow avalanches are possible on steep grassy slopes. In steep rocky terrain, isolated small-to-medium sized loose-snow avalanches are possible.

Snowpack structure

The snowpack was able to settle on Sunday. Bonding of fresh snow and drifts to the old snowpack is generally adequate. At the border old snow-to fresh snow there is surface hoar and fluff.

Weather

On Monday, generally adequate visibility, but some high altitude cloudbanks will pass through, hardly any sunshine. Little wind. At 2000 m: 12 degrees, at 3000 m -16 degrees.

Outlook

Avalanche danger will further recede.

Avalanche problems



Danger ratings

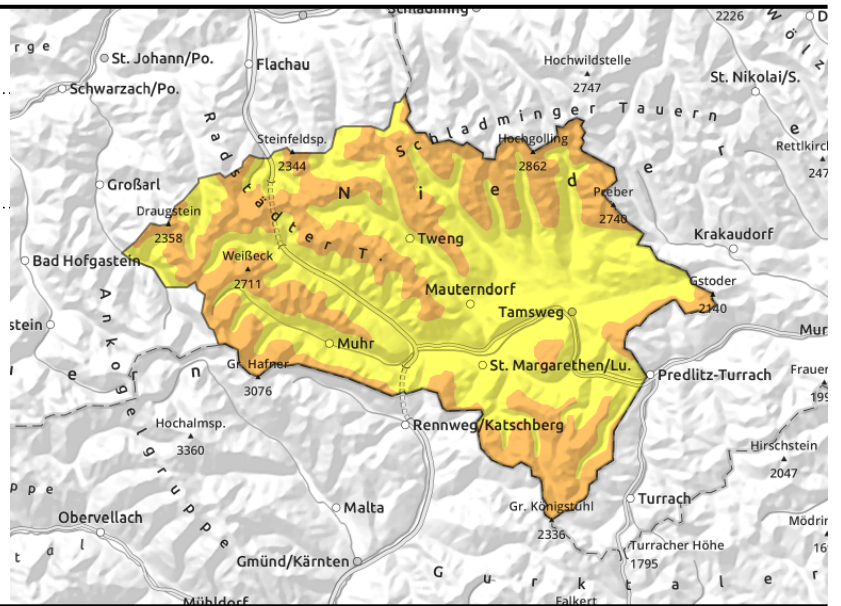
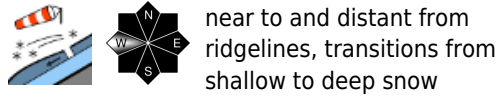


Expositions



Avalanche report for Monday, 06.02.2023

Niedere Tauern Alpenhauptkamm, Ankogelgruppe, Muhr, Niedere Tauern Süd, Nockberge



The snow is distributed in highly irregular fashion

Avalanche danger above the treeline is CONSIDERABLE, below that altitude danger is MODERATE. A slab can be triggered by the weight of one sole person in steep terrain. Most critical : E-facing slopes, also on N and S-facing slopes, isolated triggerings are possible. Transitions from shallow to deep snow require high attentiveness. Avalanches are generally small-to-medium sized, in isolated cases also large-sized.

Naturally triggered small glide-snow avalanches are possible on steep grassy slopes. In steep rocky terrain, isolated small-to-medium loose-snow avalanches are possible.

Snowpack structure

The snowpack was able to settle on Sunday. Bonding of fresh snow and drifts to the old snowpack is not adequate everywhere.

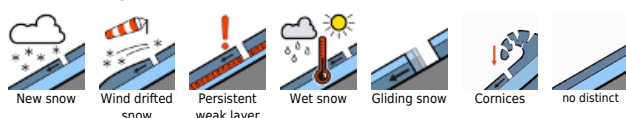
Weather

On Monday, generally adequate visibility, but some high altitude cloudbanks will pass through, hardly any sunshine. Along the Main Alpine Ridge, northerly winds at 30-50 km/hr, elsewhere not much wind. At 2000 m: 12 degrees, at 3000 m -16 degrees.

Outlook

Avalanche danger will further recede.

Avalanche problems



Danger ratings

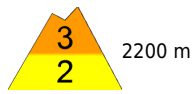




Expositions

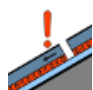



Avalanche report for Monday, 06.02.2023

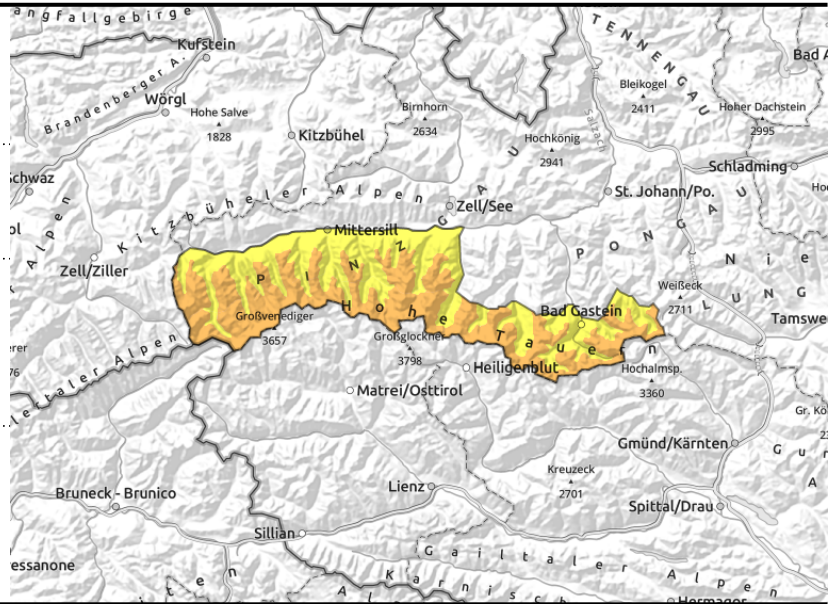
Goldberggruppe Alpenhauptkamm, Glocknergruppe Alpenhauptkamm, Großvenedigergruppe Alpenhauptkamm, Großvenedigergruppe Nord, Glocknergruppe Nord

near to and distant from ridgelines, most critical: transitions from shallow to deep snow

weak old snow, fractures to deeper layers are possible



The largest avalanches were artificially triggered on N/E facing slopes on Sunday

Avalanche danger above 2200 m is CONSIDERABLE, below that altitude danger is MODERATE. A slab can be triggered by the weight of one sole person in steep terrain. Most critical : E-facing slopes, also on N and S-facing slopes, isolated triggerings are possible. Transitions from shallow to deep snow require high attentiveness. Avalanches are generally small-to-medium sized, in isolated cases also large-sized when avalanches fracture down to deeper layers in the snowpack. Naturally triggered small glide-snow avalanches are possible on steep grassy slopes. In steep rocky terrain, isolated small-to-medium loose-snow avalanches are possible.

Snowpack structure

The snowpack was able to settle on Sunday. Bonding of fresh snow and drifts to the old snowpack is not adequate everywhere. At the border old snow-to fresh snow there is surface hoar and fluff. Also inside the old snowpack there are faceted crystals near ground level.

Weather

On Monday, generally adequate visibility, but some high altitude cloudbanks will pass through, hardly any sunshine. Along the Main Alpine Ridge, northerly winds at 30-50 km/hr, elsewhere not much wind. At 2000 m: 12 degrees, at 3000 m -16 degrees.

Outlook

Avalanche danger will further recede.

Translated by Jeffrey McCabe, www.creativtrans.com

Avalanche problems



Danger ratings



Expositions

