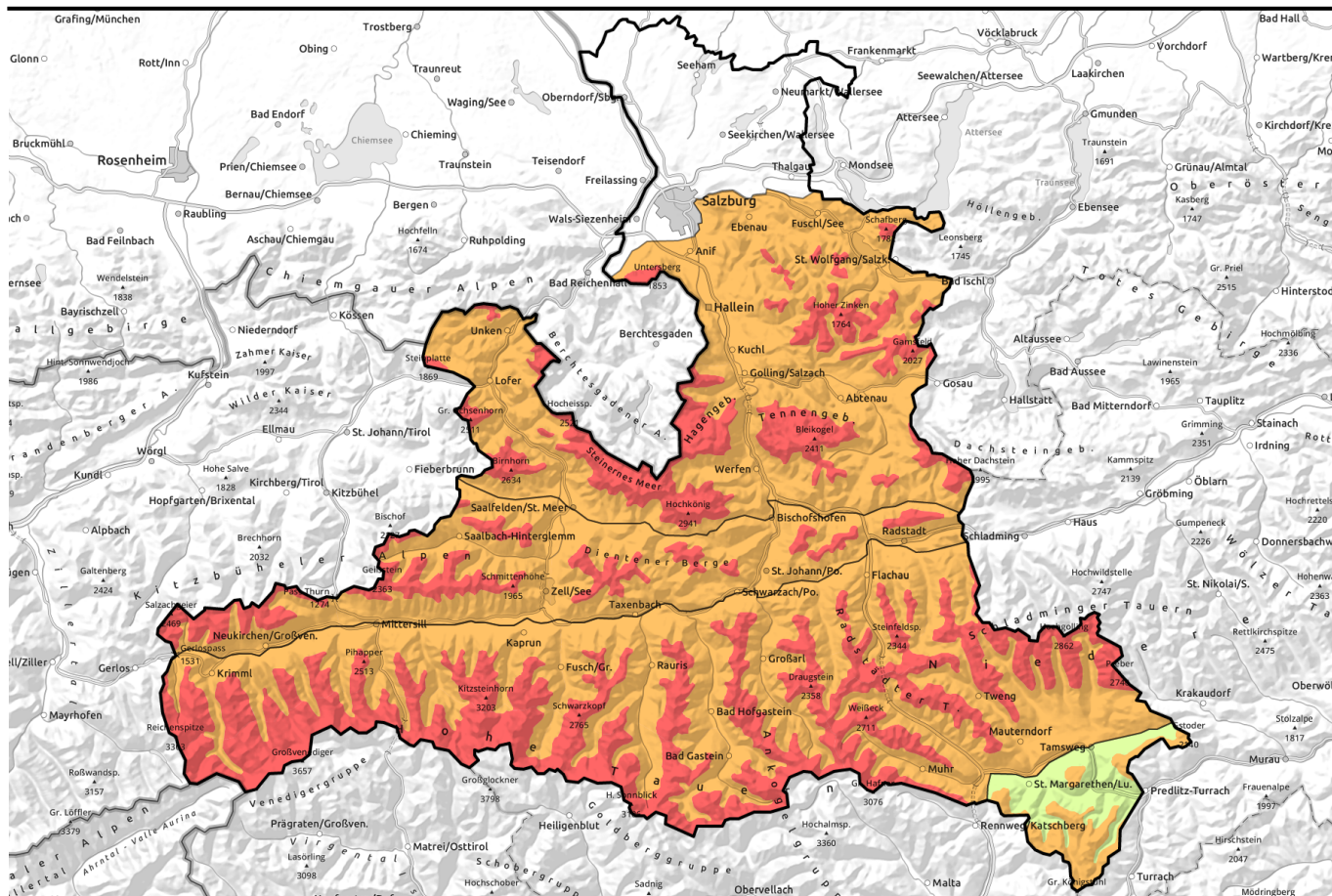


# Avalanche report for Saturday, 04.02.2023



## More fresh snowfall and storm-strength winds: HIGH avalanche danger

|  |   |  |
|--|---|--|
|  | <p>forestline<br/>Großvenedigergruppe Nord, Großvenedigergruppe Alpenhauptkamm, Glocknergruppe Nord, Glocknergruppe Alpenhauptkamm, Goldberggruppe Nord, Goldberggruppe Alpenhauptkamm, Ankogelgruppe, Muhr, Niedere Tauern Nord, Niedere Tauern Süd, Niedere Tauern Alpenhauptkamm</p> |  |
|  | <p>forestline<br/>Loferer und Leoganger Steinberge, Chiemgauer Alpen, Heutal, Reiteralpe, Steinernes Meer, Hochkönig, Hagengebirge, Göllstock, Tennengebirge, Gosaukamm, Osterhorngruppe, Gamsfeldgruppe, Untersbergstock</p>   |  |
|  | <p>forestline<br/>Oberpinzgauer Grasberge, Kitzbüheler Alpen, Glemmtal, Dientner Grasberge, Pongauer Grasberge</p>  |  |
|  | <p>1600 m<br/>Nockberge</p>   |  |

### Avalanche problems



### Danger ratings

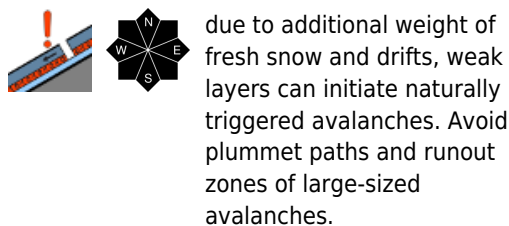
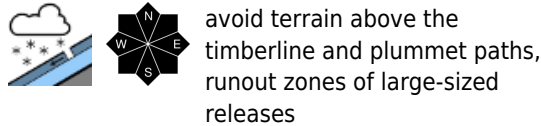
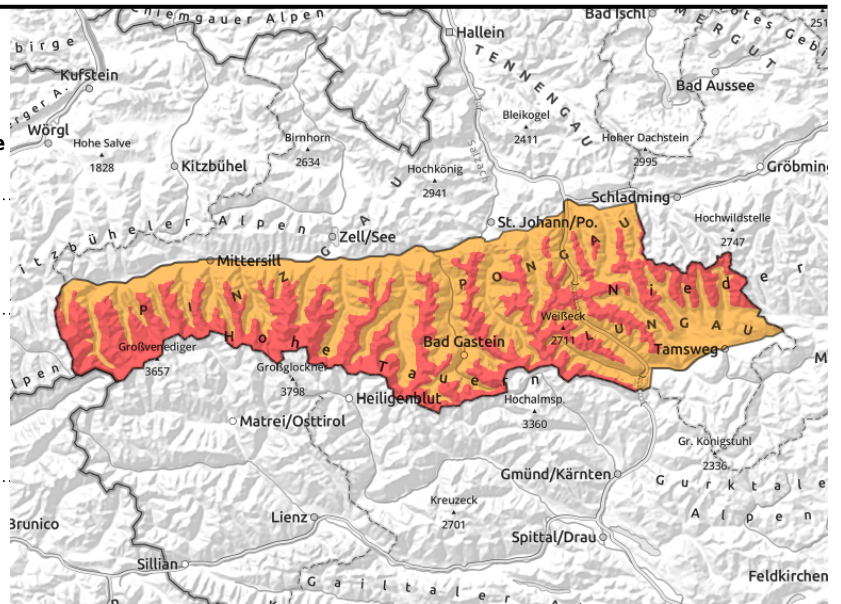


### Expositions



# Avalanche report for **Saturday, 04.02.2023**

**Großvenedigergruppe Nord, Großvenedigergruppe Alpenhauptkamm, Glocknergruppe Nord, Glocknergruppe Alpenhauptkamm, Goldberggruppe Nord, Goldberggruppe Alpenhauptkamm, Ankogelgruppe, Muhr, Niedere Tauern Nord, Niedere Tauern Süd, Niedere Tauern Alpenhauptkamm**



## Snowpack is highly prone to triggering

Avalanche danger above the timberline is HIGH (Danger Level 4). Below that altitude danger is CONSIDERABLE.

Reports of numerous large and isolated very-large sized as well as artificially triggered slab avalanches today, Friday, confirm the tense avalanche situation. On Friday night, naturally triggered avalanche activity will increase as a result of fresh snowfall and storm-strength winds. Starting zones on N/NE/E/SE facing slopes above the treeline are especially endangered. Avalanches can in places trigger in the weak old snowpack, fracture down to deeper layers, and grow to large size. Also near the treeline and further down, the proneness of the snowpack to triggering is high. Avalanches can in some places be triggered with ease and grow to medium size. Remote triggerings are possible. Much experience and much restraint is called for in winter sports enthusiasts in open terrain. On steep grass-covered slopes, naturally triggered glide-snow avalanches are possible.

## Snowpack structure

There has been 40 to 60 cm of fresh snow registered widespread, locally up to 80 cm and more. The NW winds have transported the snow far-reachingly. By Saturday morning, another 30-50 cm, in barrier cloud regions of the Hohe Tauern even 70 cm will be added to that. Winds will be stormy over widespread areas. The fresh snow and freshly generated snowdrift accumulations are prone to triggering. In the lowermost part of the snowpack there are trigger-sensitive weak layers evident from place to place which can be triggered by the weight of the fresh snow + drifts: slab avalanches can result.

## Weather

On Saturday, snowfall throughout the morning hours, sometimes heavy, later the snowfall will ease although many peaks will remain shrouded in clouds. At high altitudes above all else, stormy winds - on the Main Tauern Ridge gale-strength winds - from the northwest will be blowing. At 2000 m: -8 degrees; at 3000 m: -12 degrees.

### Avalanche problems



### Danger ratings



### Expositions



## Avalanche report for **Saturday, 04.02.2023**

### Outlook

It will remain dry, but stormy winds will prevail on the Main Alpine Ridge, then slacken off during the daytime hours. The snowpack will slowly consolidate, avalanche danger levels recede incrementally.

---

#### Avalanche problems



#### Danger ratings





#### Expositions

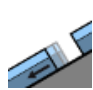



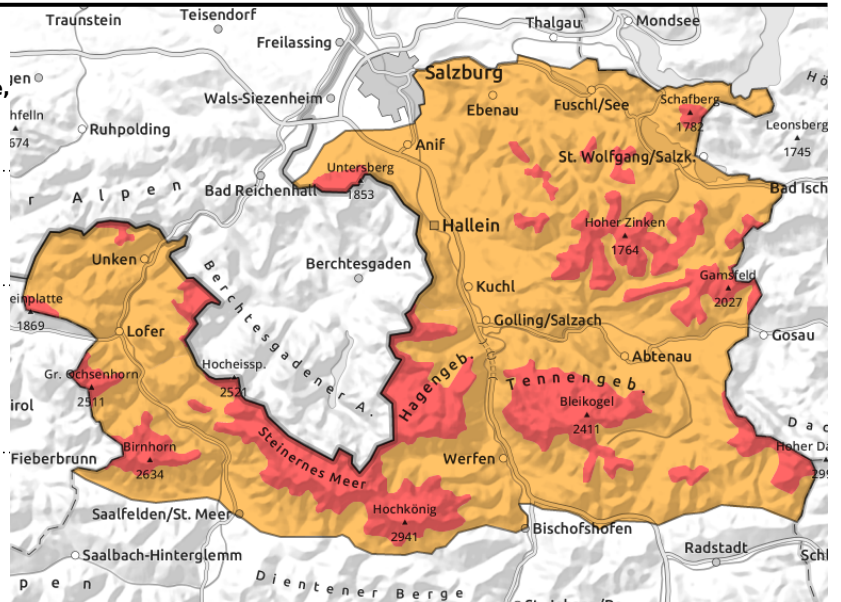
# Avalanche report for **Saturday, 04.02.2023**

**Loferer und Leoganger Steinberge, Chiemgauer Alpen, Heutal, Reiteralpe, Steinernes Meer, Hochkönig, Hagengebirge, Göllstock, Tennengebirge, Gosaukamm, Osterhorngruppe, Gamsfeldgruppe, Untersbergstock**



  avoid terrain above the timberline and plummet paths and runout zones of larger avalanches

  naturally triggered avalanches in the major areas of precipitation, on steep grassy slopes at low and intermediate altitudes



## High proneness to triggering of the snowpack

Avalanche danger above the timberline is HIGH (Danger Level 4). Below that altitude danger is CONSIDERABLE.

On Friday night, naturally triggered avalanche activity will intensify as a result of fresh snowfall and storm-strength winds. By early morning, large, in isolated cases very large naturally triggered avalanches are possible. As the snowfall slackens off, this activity will also ease. The snowpack remains highly prone to triggering, however. One single person can easily trigger avalanches on steep slopes in all aspects above the treeline, including large-sized ones. Danger zones are numerous, and not possible to recognize. Remote triggerings and isolated naturally triggered avalanches are still possible. Also below the treeline, avalanches can often be easily triggered and grow to medium size. On steep grass-covered slopes, naturally triggered glide-snow avalanches are possible.

## Snowpack structure

There has been 60 to 80 cm of fresh snow registered widespread, more from place to place. NW winds were blowing mostly at strong velocity. By Saturday morning, another 30 to 50 cm will be added to that. Winds will be stormy over widespread areas. The fresh snow and freshly generated snowdrift accumulations are prone to triggering. The lowermost part of the snowpack is compact and consolidated.

## Weather

On Saturday, snowfall throughout the morning hours, sometimes heavy, later the snowfall will ease although many peaks will remain shrouded in clouds. At high altitudes above all else, stormy winds - on the Main Tauern Ridge gale-strength winds - from the northwest will be blowing. At 2000 m: -8 degrees; at 3000 m: -12 degrees.

## Outlook

It will remain dry, but stormy winds will prevail on the Main Alpine Ridge, then slacken off during the daytime hours. The snowpack will slowly consolidate, avalanche danger levels recede incrementally.

### Avalanche problems



### Danger ratings

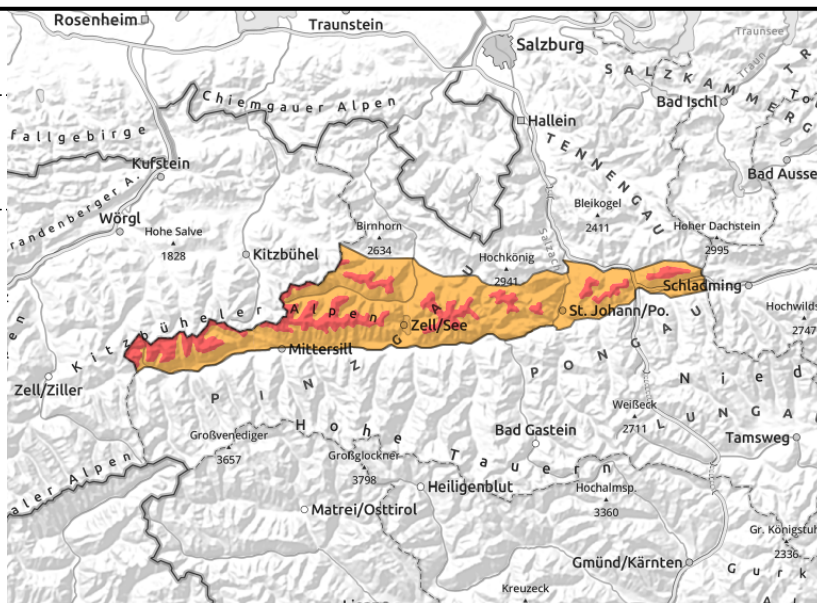
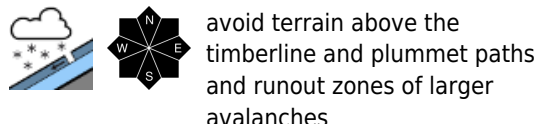


### Expositions



# Avalanche report for **Saturday, 04.02.2023**

**Oberpinzgauer Grasberge, Kitzbüheler Alpen, Glemmtal, Dientner Grasberge, Pongauer Grasberge**



## For winter sports enthusiasts an extremely treacherous avalanche situation

Avalanche danger above the timberline is HIGH (Danger Level 4). Below that altitude danger is CONSIDERABLE.

The snowpack is extremely prone to triggering. Naturally triggered as well as artificially triggered slab avalanches today, Friday, confirm the tense avalanche situation. On Friday night, naturally triggered avalanche activity will increase as a result of fresh snowfall and storm-strength winds. Starting zones on N/NE/E/SE facing slopes above the treeline are especially endangered. Avalanches can in places trigger in the weak old snowpack, fracture down to deeper layers, and grow to large size. Also near the treeline and further down, the proneness of the snowpack to triggering is high. Avalanches can in some places be triggered with ease and grow to medium size. Remote triggerings are possible. Much experience and much restraint is called for in winter sports enthusiasts in open terrain. On steep grass-covered slopes, naturally triggered glide-snow avalanches are possible.

### Snowpack structure

There has been 40 to 60 cm of fresh snow registered widespread, more from place to place. NW winds were blowing mostly at strong velocity. By Saturday morning, another 20 to 40 cm will be added to that. Winds will be stormy over widespread areas. The fresh snow and freshly generated snowdrift accumulations are prone to triggering. In wind-protected terrain and lower down there are trigger-sensitive layers of snow-fluff and surface hoar beneath the latest fresh snowfall and snowdrift masses.

### Weather

On Saturday, snowfall throughout the morning hours, sometimes heavy, later the snowfall will ease although many peaks will remain shrouded in clouds. At high altitudes above all else, stormy winds - on the Main Tauern Ridge gale-strength winds - from the northwest will be blowing. At 2000 m: -8 degrees; at 3000 m: -12 degrees.

### Outlook

It will remain dry, but stormy winds will prevail on the Main Alpine Ridge, then slacken off during the daytime hours. The snowpack will slowly consolidate, avalanche danger levels recede incrementally.

#### Avalanche problems



#### Danger ratings

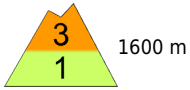


#### Expositions

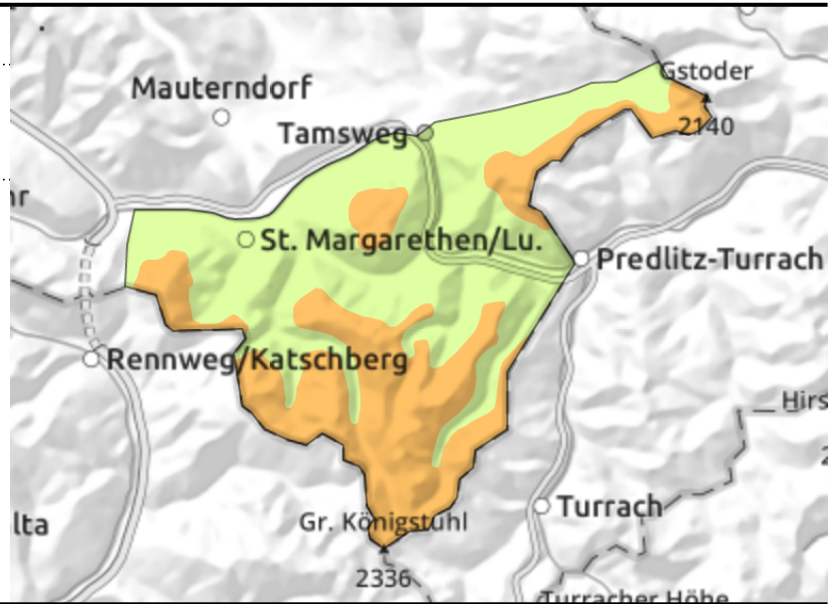


# Avalanche report for **Saturday, 04.02.2023**

## Nockberge



Use crests and ridges in order to avoid snowdrift accumulations. Avoid freshly wind-loaded terrain.



## Freshly generated trigger-sensitive snowdrift accumulations

Above 1600 m **CONSIDERABLE** avalanche danger. Main peril: freshly generated snowdrift accumulations generated by NW winds over the last few days, often possible to trigger medium slab avalanches even by one person. Amid poor visibility the danger zones are difficult to recognize. At forest edges the situation is least favourable of all.

### Snowpack structure

With strong NW winds and an additional 5-15 cm of fresh snow, new snowdrift accumulations will be generated, deposited mostly on wind-protected slopes. They lie atop soft layers and are prone to triggering. The lower part of the snowpack is well consolidated.

### Weather

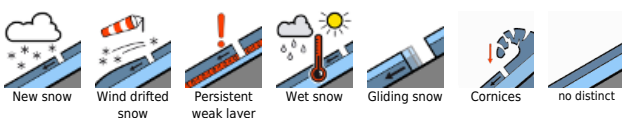
On Saturday, snowfall throughout the morning hours, sometimes heavy, later the snowfall will ease although many peaks will remain shrouded in clouds. At high altitudes above all else, stormy winds from the northwest will be blowing, northerly foehn wind will disperse the clouds somewhat. At 2000 m: -8 degrees.

### Outlook

Winds will ease. Snowdrift accumulations will slowly bond, but remain prone to triggering in places.

Translated by Jeffrey McCabe, [www.creativtrans.com](http://www.creativtrans.com)

### Avalanche problems



### Danger ratings



### Expositions

