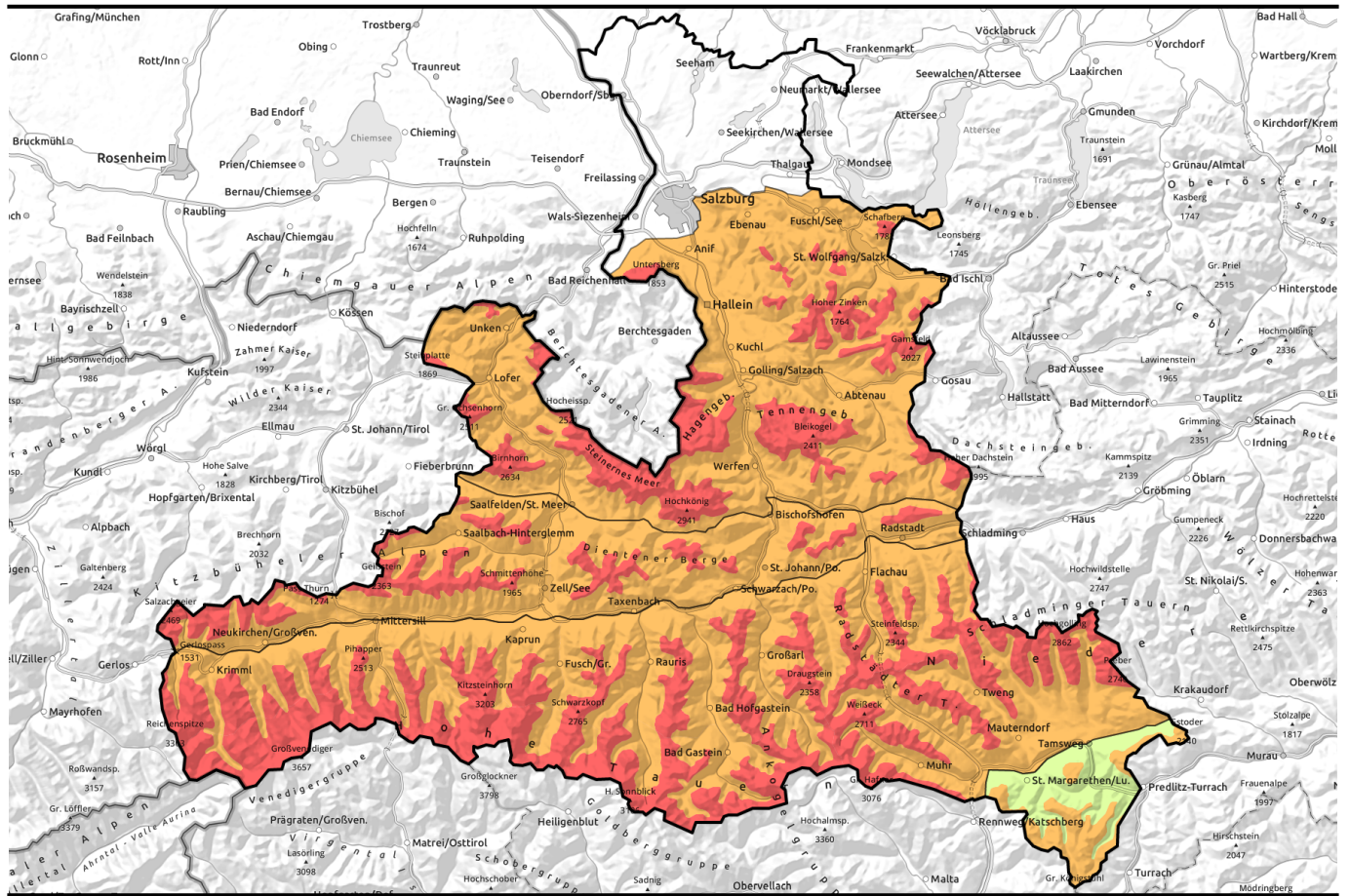


# Avalanche report for Friday, 03.02.2023



## HIGH avalanche danger regionally

	<p>forestline Großvenedigergruppe Nord, Großvenedigergruppe Alpenhauptkamm, Glocknergruppe Nord, Glocknergruppe Alpenhauptkamm, Goldberggruppe Nord, Goldberggruppe Alpenhauptkamm, Ankogelgruppe, Muhr, Niedere Tauern Nord, Niedere Tauern Süd, Niedere Tauern Alpenhauptkamm</p>	
	<p>forestline Loferer und Leoganger Steinberge, Chiemgauer Alpen, Heutal, Reiteralpe, Steinernes Meer, Hochkönig, Hagengebirge, Göllstock, Tennengebirge, Gosaukamm, Osterhorngruppe, Gamsfeldgruppe, Untersbergstock</p>	
	<p>forestline Oberpinzgauer Grasberge, Kitzbüheler Alpen, Glemmtal, Dientner Grasberge, Pongauer Grasberge</p>	
	<p>1600 m Nockberge</p>	

### Avalanche problems



### Danger ratings

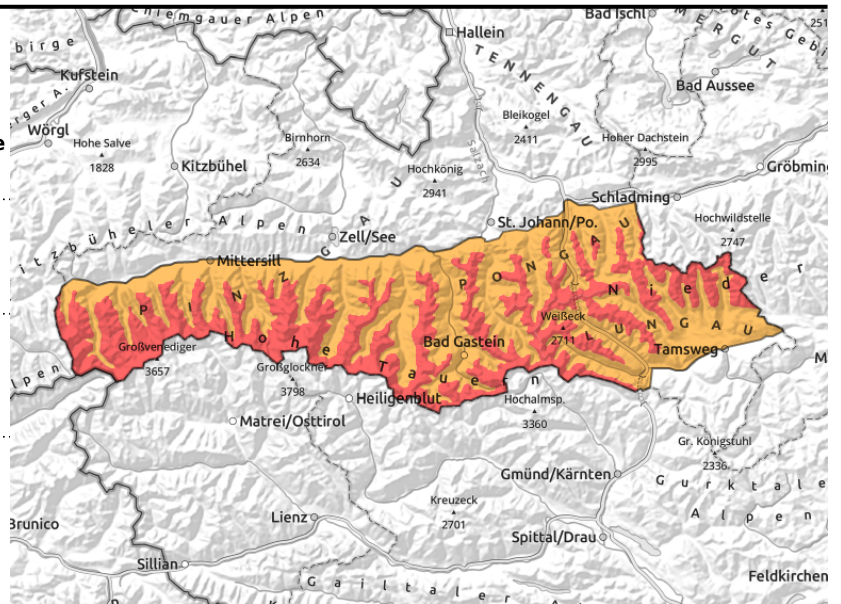


### Expositions



# Avalanche report for Friday, 03.02.2023

**Großvenedigergruppe Nord, Großvenedigergruppe Alpenhauptkamm, Glocknergruppe Nord, Glocknergruppe Alpenhauptkamm, Goldberggruppe Nord, Goldberggruppe Alpenhauptkamm, Ankogelgruppe, Muhr, Niedere Tauern Nord, Niedere Tauern Süd, Niedere Tauern Alpenhauptkamm**



forestline



avoid terrain above the timberline



due to additional weight of fresh snow and drifts, weak layers can initiate naturally triggered avalanches. Avoid plummet paths and runout zones of large-sized avalanches.

## Snowpack highly prone to triggering

Avalanche danger above the timberline is HIGH (Danger Level 4). Below that altitude danger is CONSIDERABLE.

As the snowfall eases, naturally triggered avalanche activity will slacken off somewhat. The snowpack remains very prone to triggering. One person can trigger an avalanche easily in all aspects above the treeline on steep slopes, including large releases. Danger zones are numerous and cannot be recognized. Remote triggerings and isolated naturally triggered avalanches continue to be possible, particularly in the starting zones where strong westerly winds have deposited many snowdrift accumulations. As the next round of precipitation arrives in the evening hours, naturally triggered releases will increase again. In some cases the avalanches can fracture down to deeper layers in the snowpack and grow to large size.

Also below the treeline, avalanches can often be easily triggered and reach medium size. A great deal of experience in assessing risks on-site is necessary for winter sports enthusiasts.

Where there has been much snowfall, glide-snow avalanches will increase somewhat. Precipitation on Friday evening will be rainfall below 1100 m. Thus, on very steep slopes and hillsides, loose-snow avalanches could release.

## Snowpack structure

Lots of fresh snow, also with graupel. The NW winds were usually strong. Friday morning the snowfall will ease. The fresh snow and drifts are prone to triggering. In the lower part of the snowpack are weak layers which are prone to triggering that can be triggered by the weight of the fresh snow and drifts on top of them. On leeward steep slopes, stormy westerly winds will still generate new snowdrift accumulations. Intensive snowfall will set in during the evening.

## Weather

On Friday, the peaks will be shrouded in heavy cloud, stormy NW winds will be blowing. In the morning, intermittent light snowfall, in the afternoon extended dry periods. At 2000 m: -5 degrees; at 3000 m: -10 to -6 degrees.

### Avalanche problems



### Danger ratings



### Expositions



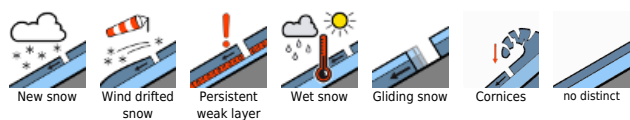
## Avalanche report for **Friday, 03.02.2023**

### Outlook

On Saturday, still stormy winds. In the morning, heavy snowfall regionally. In the afternoon the snowfall will slacken off. Avalanche danger will remain HIGH (Danger Level 4).

---

#### Avalanche problems



#### Danger ratings

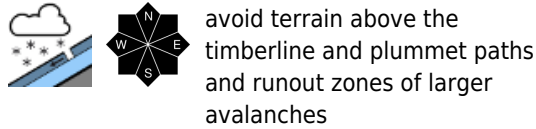


#### Expositions

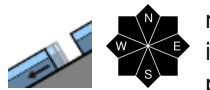


# Avalanche report for Friday, 03.02.2023

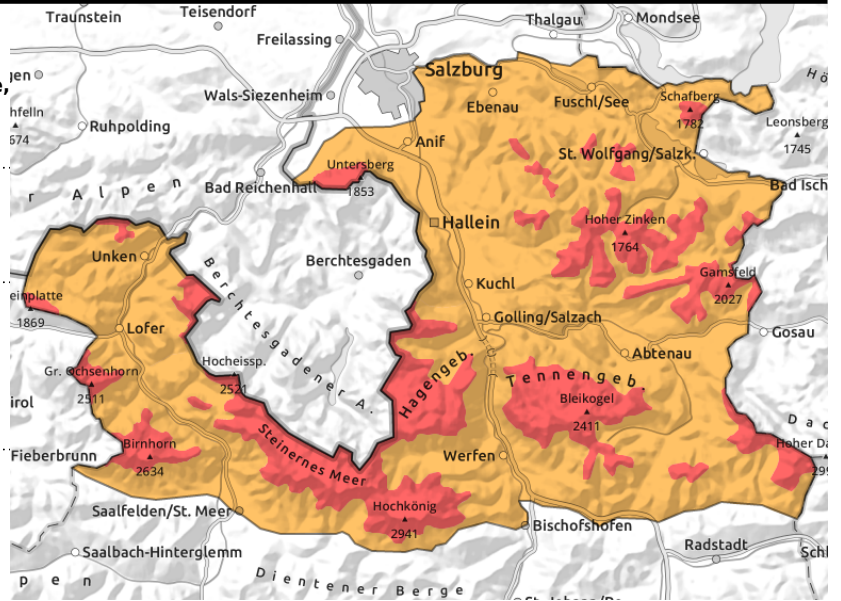
**Loferer und Leoganger Steinberge, Chiemgauer Alpen, Heutal, Reiteralpe, Steinernes Meer, Hochkönig, Hagengebirge, Göllstock, Tennengebirge, Gosaukamm, Osterhorngruppe, Gamsfeldgruppe, Untersbergstock**



avoid terrain above the timberline and plummet paths and runout zones of larger avalanches



naturally triggered avalanches in the major areas of precipitation, on steep grassy slopes at low and intermediate altitudes



## High proneness to triggering. Still naturally triggered releases.

Avalanche danger above the timberline is HIGH (Danger Level 4). Below that altitude danger is CONSIDERABLE.

By tomorrow morning, large, isolated very large naturally triggered slab avalanches are possible. As the snowfall eases, naturally triggered releases will slacken off. The snowpack remains highly prone to triggering. One person can easily trigger avalanches in all aspects above the treeline on steep slopes. Danger zones are numerous and cannot be recognized. Remote triggerings and isolated naturally triggered avalanches continue to be possible, particularly in the starting zones where strong westerly winds have deposited many snowdrift accumulations. As the next round of precipitation arrives in the evening hours, naturally triggered releases will increase again. In some cases the avalanches can fracture down to deeper layers in the snowpack and grow to large size.

On steep grassy slopes, glide-snow avalanche activity will increase somewhat. Precipitation on Friday evening will be rainfall below 1100 m. Thus, on very steep slopes and hillsides, loose-snow avalanches could release.

### Snowpack structure

By Thursday evening there was 60-80 cm of fresh snow registered, during the night there will be more. Strong NW winds were usually strong. Friday morning the snowfall will ease. The fresh snow and drifts are prone to triggering. On leeward steep slopes, stormy westerly winds will still generate new snowdrift accumulations. Intensive snowfall will set in during the evening.

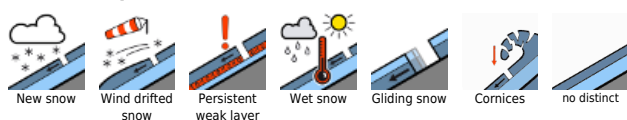
### Weather

On Friday, the peaks will be shrouded in heavy cloud, stormy NW winds will be blowing. In the morning, intermittent light snowfall, in the afternoon extended dry periods. At 2000 m: -5 degrees; at 3000 m: -10 to -6 degrees.

### Outlook

On Saturday, still stormy winds. In the morning, heavy snowfall regionally. In the afternoon the snowfall will slacken off. Avalanche danger will remain HIGH (Danger Level 4).

#### Avalanche problems



#### Danger ratings



#### Expositions

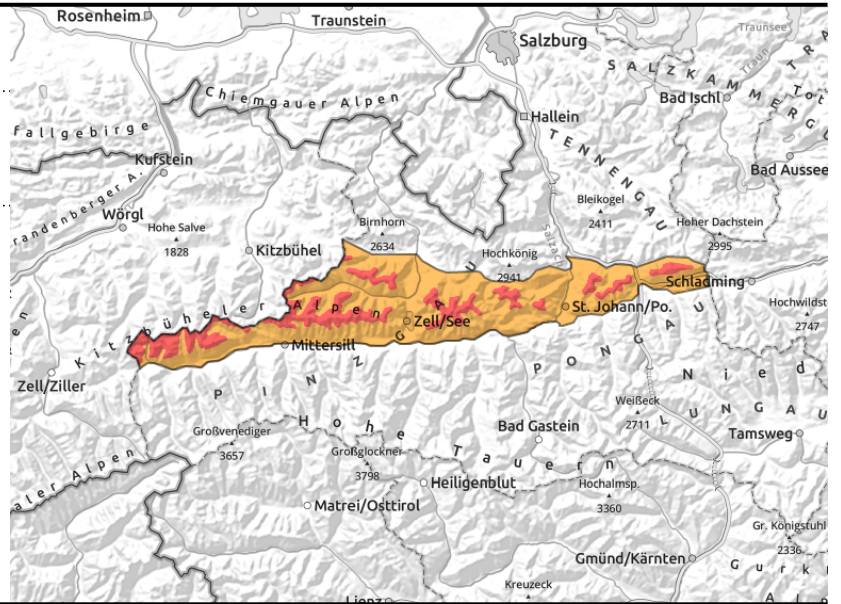


# Avalanche report for Friday, 03.02.2023

Oberpinzgauer Grasberge, Kitzbüheler Alpen, Glemmtal, Dientner Grasberge, Pongauer Grasberge



avoid terrain above the timberline and plummet paths and runout zones of larger avalanches



## Dangerous avalanche situation

Avalanche danger above the timberline is HIGH (Danger Level 4). Below that altitude danger is CONSIDERABLE.

As the snowfall eases on Friday morning, naturally triggered releases will slacken off. The snowpack remains highly prone to triggering. One person can easily trigger avalanches in all aspects above the treeline on steep slopes. Danger zones are numerous and cannot be recognized. Remote triggerings and isolated naturally triggered avalanches continue to be possible, particularly in the starting zones where strong westerly winds have deposited many snowdrift accumulations. As the next round of precipitation arrives in the evening hours, naturally triggered releases will increase again. In some cases the avalanches can fracture down to deeper layers in the snowpack and grow to large size. On steep grassy slopes at low and intermediate altitudes, glide-snow avalanche activity will be possible. Precipitation on Friday evening will be rainfall below 1100 m. Thus, on very steep slopes and hillsides, loose-snow avalanches could release.

## Snowpack structure

Lots of fresh snow, also with graupel. The NW winds were usually strong. Friday morning the snowfall will ease. The fresh snow and drifts are prone to triggering. In the lower part of the snowpack are weak layers which are prone to triggering that can be triggered by the weight of the fresh snow and drifts on top of them. On leeward steep slopes, stormy westerly winds will still generate new snowdrift accumulations. Intensive snowfall will set in during the evening.

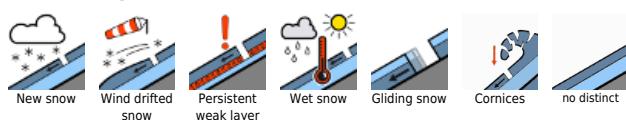
## Weather

On Friday, the peaks will be shrouded in heavy cloud, stormy NW winds will be blowing. In the morning, intermittent light snowfall, in the afternoon extended dry periods. At 2000 m: -5 degrees; at 3000 m: -10 to -6 degrees.

## Outlook

On Saturday, still stormy winds. In the morning, heavy snowfall regionally. In the afternoon the snowfall will slacken off. Avalanche danger will remain HIGH (Danger Level 4).

### Avalanche problems



### Danger ratings

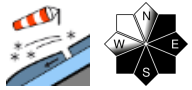
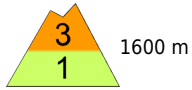


### Expositions

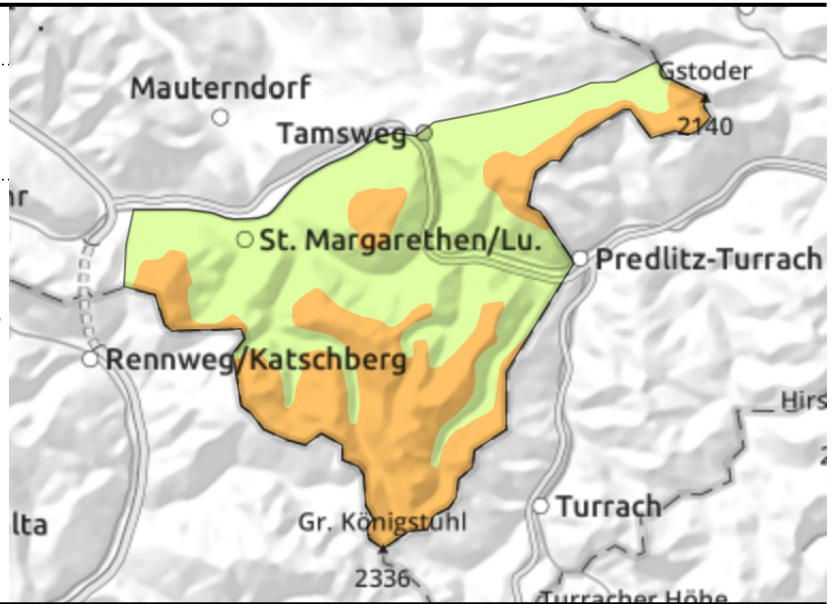


# Avalanche report for Friday, 03.02.2023

## Nockberge



Snowdrift accumulations often nearly impossible to spot amid poor visibility. Choose simple terrain, avoid terrain with traps



## Freshly generated trigger-sensitive snowdrift accumulations

Above 1600 m CONSIDERABLE avalanche danger. Main peril: freshly generated snowdrift accumulations generated by NW winds over the last few days, often possible to trigger medium slab avalanches even by one person. Danger zones occur in gullies and bowls, behind abrupt discontinuities in the terrain on very steep (>35°) on E/S facing slopes. As winds intensify the danger zones occur also in other aspects. Renewed snowfall will set in during the evening, trigger-sensitivity will increase.

### Snowpack structure

With strong NW winds and fresh snow, new snowdrift accumulations have been generated, deposited mostly on E/S facing slopes. They lie in leeward zones atop soft layers and are prone to triggering. During Friday night, snowfall will set in again, another 15-20 cm is expected amid stormy wind impact.

### Weather

On Friday, persistently strong winds at high altitudes from the northwest. Cloud will disperse somewhat, only little sunshine. Later on, a warm front will bring in new cloud cover. At 2000 m: -3 degrees; at 1000 m: +4 degrees.

### Outlook

On Saturday, minor snowfall. No significant change is expected in avalanche danger.

Translated by Jeffrey McCabe, [www.creativtrans.com](http://www.creativtrans.com)

### Avalanche problems



### Danger ratings



### Expositions

