

## Regionally HIGH avalanche danger

	forestline	Nockberge	
	forestline	Goldberggruppe Nord, Glocknergruppe Nord, Glocknergruppe Alpenhauptkamm, Großvenedigergruppe Nord, Großvenedigergruppe Alpenhauptkamm, Goldberggruppe Alpenhauptkamm, Niedere Tauern Alpenhauptkamm, Niedere Tauern Süd, Ankogelgruppe, Muhr, Niedere Tauern Nord	
	forestline	Steinernes Meer, Hochkönig, Hagengebirge, Göllstock, Tennengebirge, Gosaukamm, Loferer und Leoganger Steinberge, Osterhorngruppe, Gamsfeldgruppe, Untersbergstock, Chiemgauer Alpen, Heutal, Reiteralpe	
	forestline	Oberpinzgauer Grasberge, Kitzbüheler Alpen, Glemmtal, Dientner Grasberge, Pongauer Grasberge	

### Avalanche problems



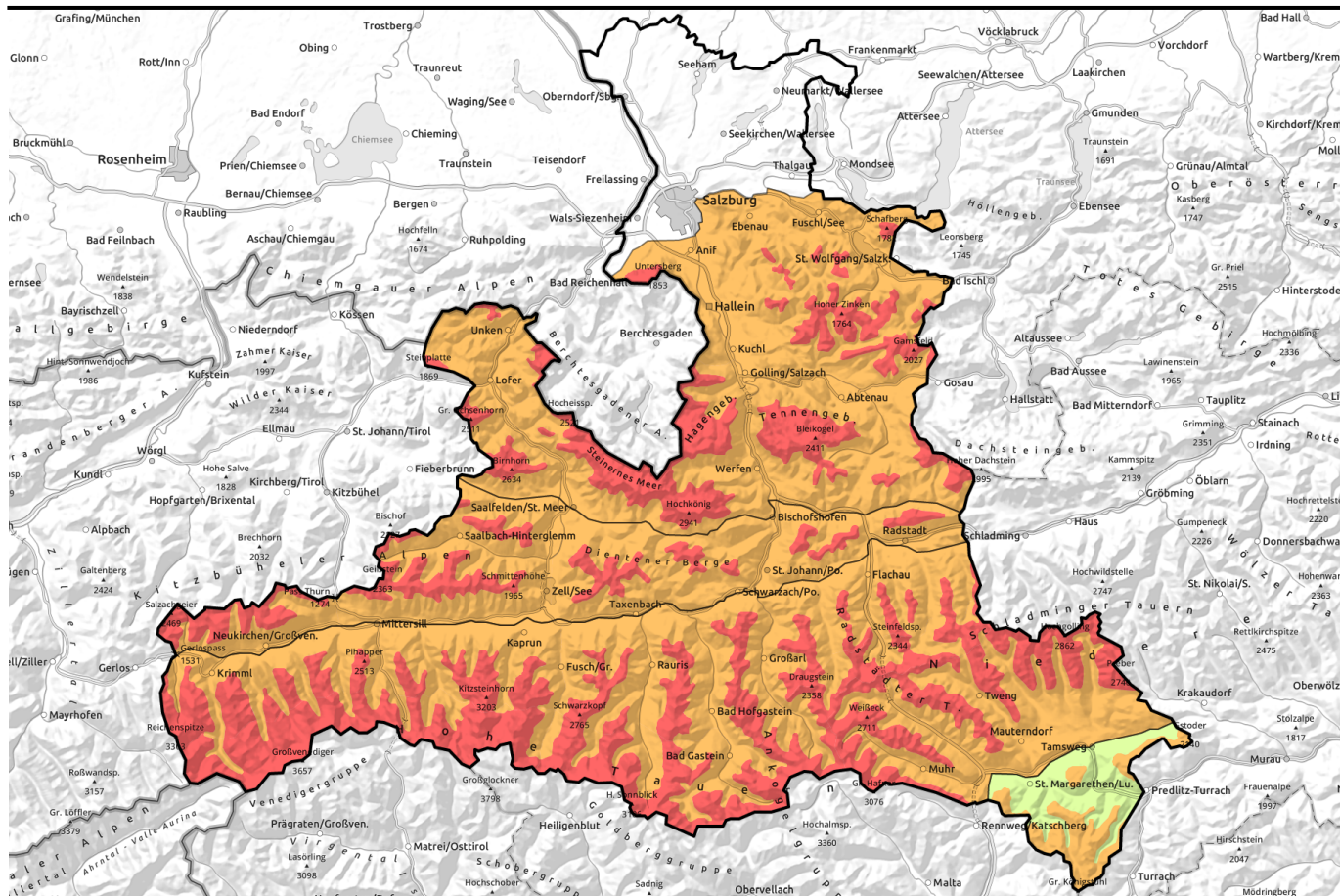
### Danger ratings



### Expositions



# Avalanche report for Thursday, 02.02.2023, afternoon



## Gebietsweise GROSSE Lawinengefahr!



Nockberge



forestline



Goldberggruppe Nord, Glocknergruppe Nord, Glocknergruppe Alpenhauptkamm, Großvenedigergruppe Nord, Großvenedigergruppe Alpenhauptkamm, Goldberggruppe Alpenhauptkamm, Niedere Tauern Alpenhauptkamm, Niedere Tauern Süd, Ankogelgruppe, Muhr, Niedere Tauern Nord



forestline



Steinernes Meer, Hochkönig, Hagengebirge, Göllstock, Tennengebirge, Gosaukamm, Loferer und Leoganger Steinberge, Osterhorngruppe, Gamsfeldgruppe, Untersbergstock, Chiemgauer Alpen, Heutal, Reiteralpe



forestline



Oberpinzgauer Grasberge, Kitzbüheler Alpen, Glemmtal, Dientner Grasberge, Pongauer Grasberge



forestline

### Avalanche problems



### Danger ratings



### Expositions



## Avalanche report for Thursday, 02.02.2023, morning

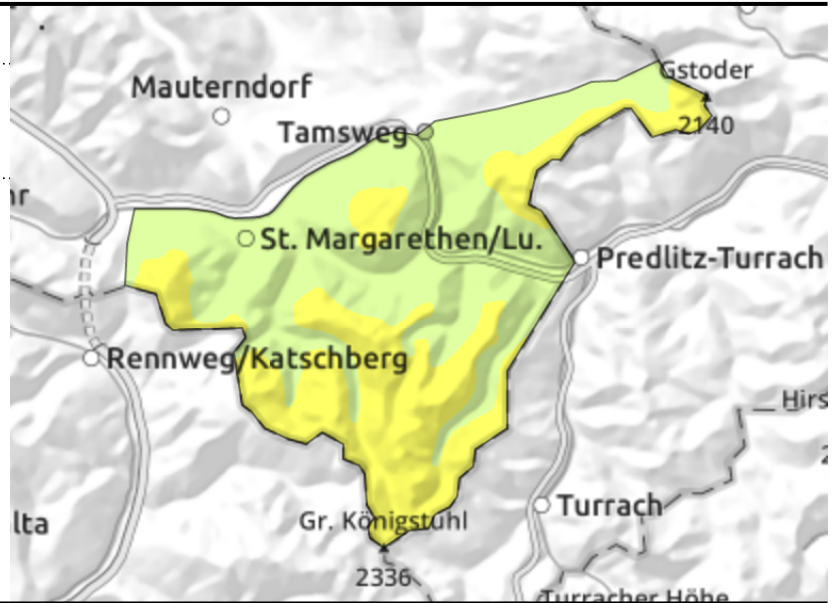
### Nockberge



forestline



Snowdrift accumulations often nearly impossible to spot (poor visibility). Seek simple terrain. Avoid traps.



## Increase in frequency of danger zones during the day

Near the timberline and upwards, avalanche danger will rise to CONSIDERABLE during the afternoon. Below that altitude danger is LOW.

Main danger: fresh snowdrift accumulations generated by NW winds in the last few days, often triggerable as medium slab avalanche by one person. Danger zones occur in gullies and bowls, behind abrupt discontinuities in the terrain on very steep ( $>35^\circ$ ) E/S facing slopes. As a result of fresh snow and wind, danger zones will increase during the daytime, esp. in the afternoon, in both frequency and size. Poor visibility makes these places not visible to the naked eye. Surface releases can in very isolated cases fracture down to more deeply embedded layers of the snowpack and grow to larger size.

### Snowpack structure

Fresh snow is expected (15-20 cm) often amid strong W/NW winds, thus, it will be transported. Heavy snowfall is anticipated in the afternoon, generating far-reaching snowdrift accumulations, which will be deposited in leeward terrain, often atop soft layers. In addition, older snowdrifts are poorly bonded with the snowpack beneath them. In very isolated cases, trigger-sensitive weak layer lurk inside the snowpack base.

### Weather

On Thursday, ongoing clouds will move in from the northwest, repeated bouts of snowfall are expected, especially heavy starting at midday. Often strong NW winds. At 3000 m: -13 degrees; at 2000 m: -5 degrees.

### Outlook

On Friday, only a small amount of snowfall is expected. Winds will be stormy in the afternoon. The situation is not expected to change much. The snowdrift accumulations are the problem.

#### Avalanche problems



#### Danger ratings



#### Expositions



## Avalanche report for Thursday, 02.02.2023, afternoon

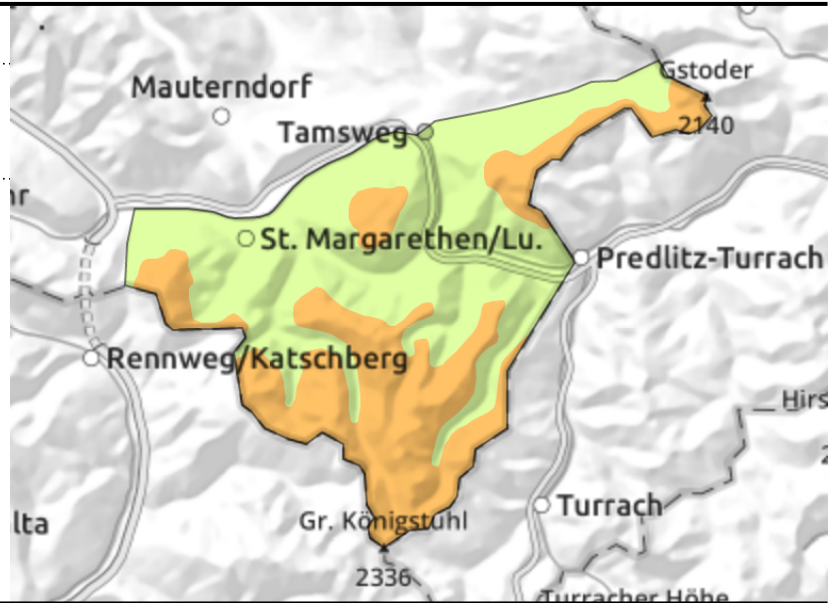
### Nockberge



forestline



Snowdrift accumulations often nearly impossible to spot (poor visibility). Seek simple terrain. Avoid traps.



### Increase in frequency of danger zones during the day

Near the timberline and upwards, avalanche danger will rise to CONSIDERABLE during the afternoon. Below that altitude danger is LOW.

Main danger: fresh snowdrift accumulations generated by NW winds in the last few days, often triggerable as medium slab avalanche by one person. Danger zones occur in gullies and bowls, behind abrupt discontinuities in the terrain on very steep (>35°) E/S facing slopes. As a result of fresh snow and wind, danger zones will increase during the daytime, esp. in the afternoon, in both frequency and size. Poor visibility makes these places not visible to the naked eye. Surface releases can in very isolated cases fracture down to more deeply embedded layers of the snowpack and grow to larger size.

### Snowpack structure

Fresh snow is expected (15-20 cm) often amid strong W/NW winds, thus, it will be transported. Heavy snowfall is anticipated in the afternoon, generating far-reaching snowdrift accumulations, which will be deposited in leeward terrain, often atop soft layers. In addition, older snowdrifts are poorly bonded with the snowpack beneath them. In very isolated cases, trigger-sensitive weak layer lurk inside the snowpack base.

### Weather

On Thursday, ongoing clouds will move in from the northwest, repeated bouts of snowfall are expected, especially heavy starting at midday. Often strong NW winds. At 3000 m: -13 degrees; at 2000 m: -5 degrees.

### Outlook

On Friday, only a small amount of snowfall is expected. Winds will be stormy in the afternoon. The situation is not expected to change much. The snowdrift accumulations are the problem.

#### Avalanche problems



#### Danger ratings

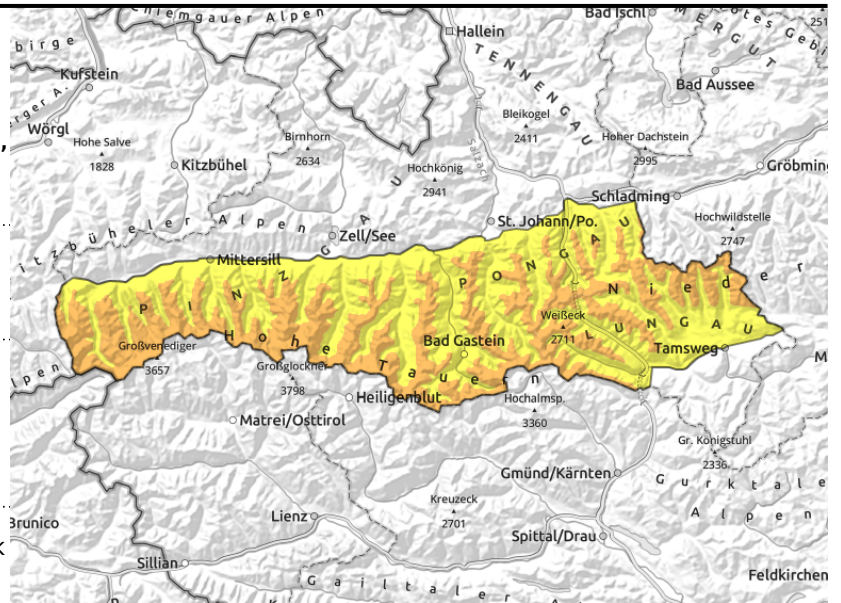


#### Expositions



## Avalanche report for Thursday, 02.02.2023, morning

**Goldberggruppe Nord, Glocknergruppe Nord, Glocknergruppe Alpenhauptkamm, Großvenedigergruppe Nord, Großvenedigergruppe Alpenhauptkamm, Nieder Tauern Alpenhauptkamm, Nieder Tauern Süd, Ankogelgruppe, Muhr, Nieder Tauern Nord**



Snowdrift accumulations often nearly impossible to spot (poor visibility). Seek simple terrain. Avoid traps.



special caution urged near rock precipices and in very steep convex terrain

### A dangerous situation will develop during the day

Avalanche danger will increase during the day. Above the treeline, danger will be HIGH (Danger Level 4).

Fresh snowdrift masses in all aspects, also distant from ridgeline and near the treeline, can be triggered even by one person and grow to medium size. Danger zones will increase in size and frequency during the course of the day: as of afternoon in all aspects. Avalanches can be large-sized. Medium-to-large sized naturally triggered avalanches are possible and these releases can fracture down to weak layers in the snowpack and grow larger still.

Below the treeline the situation is more favourable. Avalanches can trigger also there, esp. in untracked terrain, forest lanes, and grow to medium size. Beware the runout zones of avalanches which release further up. A great deal of experience is essential - as well as much restraint - in outlying terrain.

### Snowpack structure

On Thursday fresh snow is expected (40-60 cm), more from place to place esp. in high alpine regions. Snowfall level: 400-700 m. Strong NW winds. Many layers of fresh snow and drifts are bonding poorly with the old snowpack, making them prone to trigger while the snowfall is going on. In the lower part of the snowpack are trigger-sensitive weak layers which can be triggered as a slab avalanche by the weight of fresh snow and snowdrifts.

### Weather

The mountains will be shrouded in cloud all day long, moderately heavy snowfall will persist and mount in quantity. Strong W/NW winds, in exposed terrain reaching 90 km/hr, will transport the snow to varying degrees. At 2000 m: -7 degrees; at 3000 m: -13 degrees.

### Outlook

On Friday the precipitation will ease, but winds will intensify in the afternoon anew, reach storm strength. Fresh snow will be transported, naturally triggered avalanches will be possible from the snowdrifts. On Friday night, a warm front will bring another round of precipitation from the northwest. The HIGH avalanche danger will persist.

#### Avalanche problems



#### Danger ratings

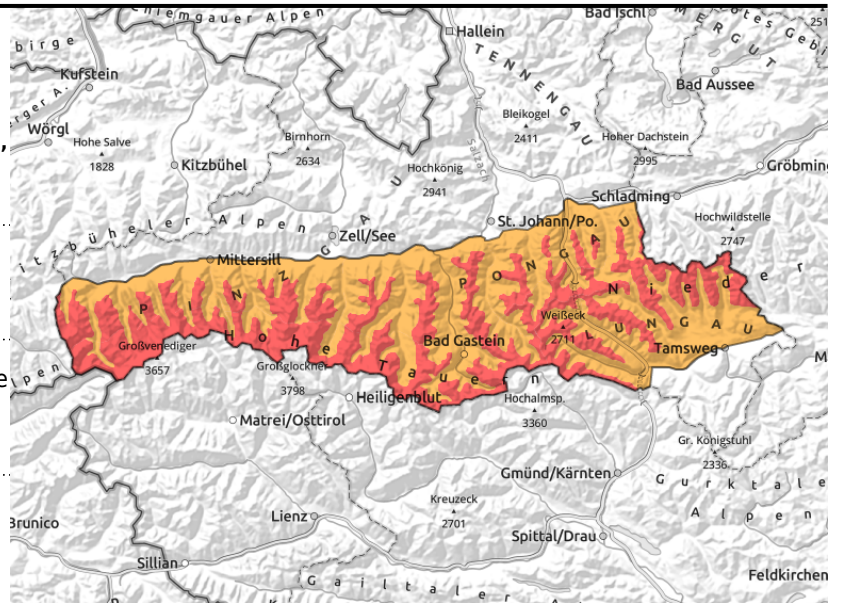


#### Expositions



## Avalanche report for Thursday, 02.02.2023, afternoon

**Goldberggruppe Nord, Glocknergruppe Nord, Glocknergruppe Alpenhauptkamm, Großvenedigergruppe Nord, Großvenedigergruppe Alpenhauptkamm, Goldberggruppe Alpenhauptkamm, Niedere Tauern Alpenhauptkamm, Niedere Tauern Süd, Ankogelgruppe, Muhr, Niedere Tauern Nord**



forestline



Avoid terrain above the treeline during intensive snowfall and wind.



Due to additional burdens from fresh snow and drifts, weak layer in the old snowpack can be disturbed and release naturally. Avoid plummet paths and runout zones of large-sized releases.

## A dangerous situation will develop during the day

Avalanche danger will increase during the day. Above the treeline, danger will be HIGH (Danger Level 4).

Fresh snowdrift masses in all aspects, also distant from ridgeline and near the treeline, can be triggered even by one person and grow to medium size. Danger zones will increase in size and frequency during the course of the day: as of afternoon in all aspects. Avalanches can be large-sized. Medium-to-large sized naturally triggered avalanches are possible and these releases can fracture down to weak layers in the snowpack and grow larger still.

Below the treeline the situation is more favourable. Avalanches can trigger also there, esp. in untracked terrain, forest lanes, and grow to medium size. Beware the runout zones of avalanches which release further up. A great deal of experience is essential - as well as much restraint - in outlying terrain.

### Snowpack structure

On Thursday fresh snow is expected (40-60 cm), more from place to place esp. in high alpine regions. Snowfall level: 400-700 m. Strong NW winds. Many layers of fresh snow and drifts are bonding poorly with the old snowpack, making them prone to trigger while the snowfall is going on. In the lower part of the snowpack are trigger-sensitive weak layers which can be triggered as a slab avalanche by the weight of fresh snow and snowdrifts.

### Weather

The mountains will be shrouded in cloud all day long, moderately heavy snowfall will persist and mount in quantity. Strong W/NW winds, in exposed terrain reaching 90 km/hr, will transport the snow to varying degrees. At 2000 m: -7 degrees; at 3000 m: -13 degrees.

### Outlook

On Friday the precipitation will ease, but winds will intensify in the afternoon anew, reach storm strength. Fresh snow will be transported, naturally triggered avalanches will be possible from the

#### Avalanche problems



#### Danger ratings



#### Expositions



## Avalanche report for Thursday, 02.02.2023, afternoon

snowdrifts. On Friday night, a warm front will bring another round of precipitation from the northwest. The HIGH avalanche danger will persist.

### Avalanche problems



### Danger ratings

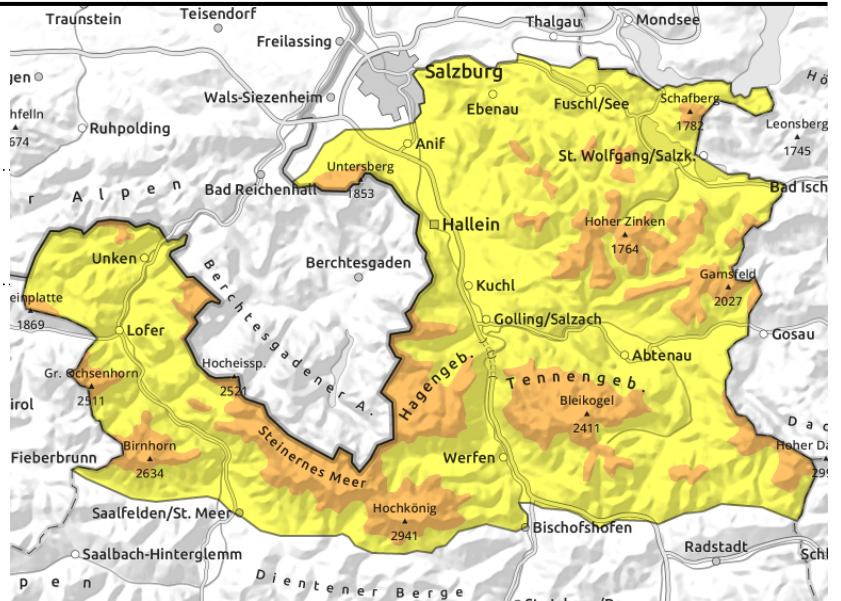
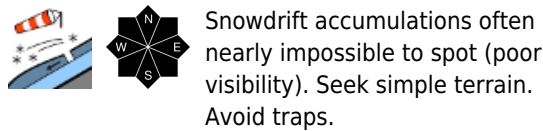


### Expositions



## Avalanche report for Thursday, 02.02.2023, morning

**Steinernes Meer, Hochkönig, Hagengebirge, Göllstock, Tennengebirge, Gosaukamm, Loferer und Leoganger Steinberge, Osterhorngruppe, Gamsfeldgruppe, Untersbergstock, Chiemgauer Alpen, Heutal, Reiteralpe**



### A dangerous situation will develop during the day

Avalanche danger will increase during the day. Above the treeline, danger will be HIGH (Danger Level 4).

Fresh snowdrift masses in all aspects, also distant from ridgeline and near the treeline, can be triggered even by one person and grow to medium size. Danger zones will increase in size and frequency during the course of the day: as of afternoon in all aspects. Avalanches can be large-sized. Medium-to-large sized naturally triggered avalanches are possible and these releases can fracture down to weak layers in the snowpack and grow larger still.

Below the treeline the situation is more favourable. Avalanches can trigger also there, esp. in untracked terrain, forest lanes, and grow to medium size. Beware the runout zones of avalanches which release further up. A great deal of experience is essential - as well as much restraint - in outlying terrain.

### Snowpack structure

On Thursday fresh snow is expected (60-80 cm), more from place to place, the highest intensity snowfall will be in late afternoon and early evening. Snowfall level: 400-700 m. Strong NW winds. Many layers of fresh snow and drifts are bonding poorly with the old snowpack, making them prone to trigger while the snowfall is going on. In the lower part of the snowpack are trigger-sensitive weak layers which can be triggered as a slab avalanche by the weight of fresh snow and snowdrifts.

### Weather

The mountains will be shrouded in cloud all day long, moderately heavy snowfall will persist and mount in quantity. Strong W/NW winds, in exposed terrain reaching 90 km/hr, will transport the snow to varying degrees. At 2000 m: -7 degrees; at 3000 m: -13 degrees.

### Outlook

On Friday the precipitation will ease, but winds will intensify in the afternoon anew, reach storm strength. Fresh snow will be transported, naturally triggered avalanches will be possible from the snowdrifts. On Friday night, a warm front will bring another round of precipitation from the northwest. The HIGH avalanche danger will persist.

#### Avalanche problems



#### Danger ratings



#### Expositions



## Avalanche report for Thursday, 02.02.2023, afternoon

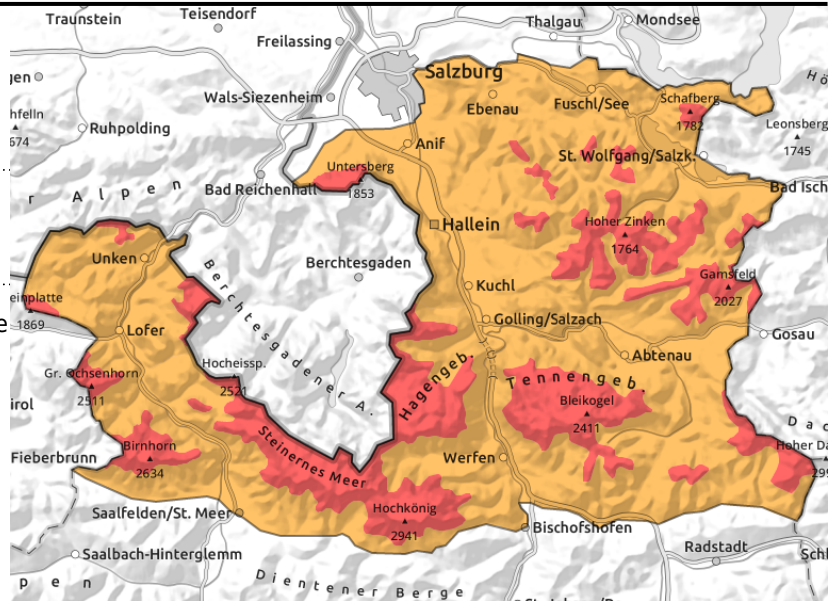
**Steinernes Meer, Hochkönig, Hagengebirge, Göllstock, Tennengebirge, Gosaukamm, Loferer und Leoganger Steinberge, Osterhorngruppe, Gamsfeldgruppe, Untersbergstock, Chiemgauer Alpen, Heutal, Reiteralpe**



forestline



Avoid terrain above the treeline during intensive snowfall and wind.



### A dangerous situation will develop during the day

Avalanche danger will increase during the day. Above the treeline, danger will be HIGH (Danger Level 4).

Fresh snowdrift masses in all aspects, also distant from ridgeline and near the treeline, can be triggered even by one person and grow to medium size. Danger zones will increase in size and frequency during the course of the day: as of afternoon in all aspects. Avalanches can be large-sized. Medium-to-large sized naturally triggered avalanches are possible and these releases can fracture down to weak layers in the snowpack and grow larger still.

Below the treeline the situation is more favourable. Avalanches can trigger also there, esp. in untracked terrain, forest lanes, and grow to medium size. Beware the runout zones of avalanches which release further up. A great deal of experience is essential - as well as much restraint - in outlying terrain.

### Snowpack structure

On Thursday fresh snow is expected (60-80 cm), more from place to place, the highest intensity snowfall will be in late afternoon and early evening. Snowfall level: 400-700 m. Strong NW winds. Many layers of fresh snow and drifts are bonding poorly with the old snowpack, making them prone to trigger while the snowfall is going on. In the lower part of the snowpack are trigger-sensitive weak layers which can be triggered as a slab avalanche by the weight of fresh snow and snowdrifts.

### Weather

The mountains will be shrouded in cloud all day long, moderately heavy snowfall will persist and mount in quantity. Strong W/NW winds, in exposed terrain reaching 90 km/hr, will transport the snow to varying degrees. At 2000 m: -7 degrees; at 3000 m: -13 degrees.

### Outlook

On Friday the precipitation will ease, but winds will intensify in the afternoon anew, reach storm strength. Fresh snow will be transported, naturally triggered avalanches will be possible from the snowdrifts. On Friday night, a warm front will bring another round of precipitation from the northwest. The HIGH avalanche danger will persist.

#### Avalanche problems



#### Danger ratings



#### Expositions

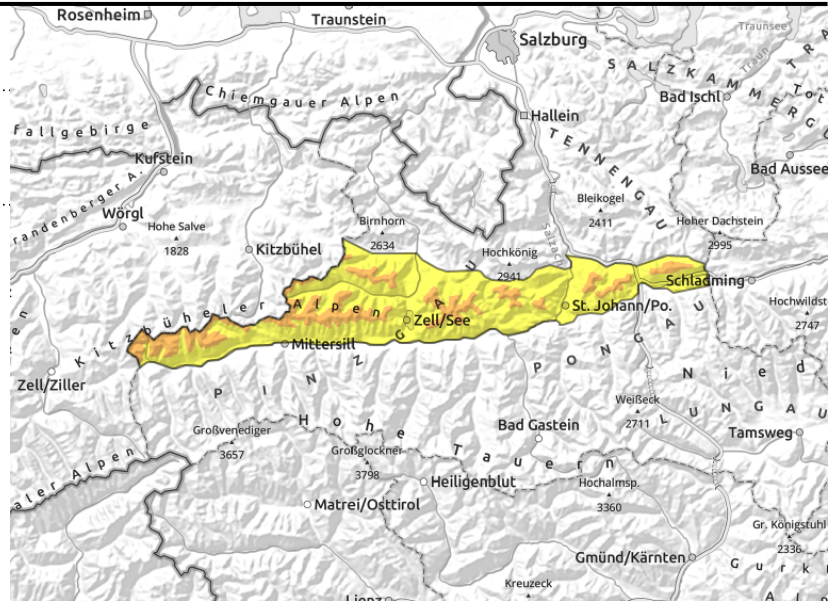


## Avalanche report for Thursday, 02.02.2023, morning

Oberpinzgauer Grasberge, Kitzbüheler Alpen, Glemmtal, Dientner Grasberge, Pongauer Grasberge



Snowdrift accumulations often nearly impossible to spot (poor visibility). Seek simple terrain. Avoid traps.



### Increasing danger during the day. A treacherous situation for winter sports enthusiasts.

Avalanche danger will increase during the day. Above the treeline, danger will be HIGH (Danger Level 4).

Fresh snowdrift masses in all aspects, also distant from ridgeline and near the treeline, can be triggered even by one person and grow to medium size. Danger zones will increase in size and frequency during the course of the day: as of afternoon in all aspects. Avalanches can be large-sized. Medium-to-large sized naturally triggered avalanches are possible and these releases can fracture down to weak layers in the snowpack and grow larger still.

Below the treeline the situation is more favourable. Avalanches can trigger also there, esp. in untracked terrain, forest lanes, and grow to medium size. Beware the runout zones of avalanches which release further up. A great deal of experience is essential - as well as much restraint - in outlying terrain.

### Snowpack structure

On Thursday fresh snow is expected (40-60 cm), more from place to place, the highest intensity snowfall will be in late afternoon and early evening. Snowfall level: 400-700 m. Strong NW winds. Many layers of fresh snow and drifts are bonding poorly with the old snowpack, making them prone to trigger while the snowfall is going on. In the lower part of the snowpack are trigger-sensitive weak layers which can be triggered with ease as a slab avalanche by the weight of fresh snow and snowdrifts.

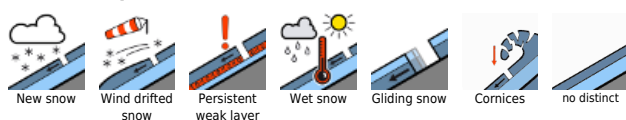
### Weather

The Northern Alps will be shrouded in cloud, snow showers will pass through in the morning. Further south, the clouds will disperse somewhat, but visibility will remain flat. Strong to stormy W/NW winds. At 2000 m: -7 degrees; at 3000 m: -13 degrees.

### Outlook

On Friday the precipitation will ease, but winds will intensify in the afternoon anew, reach storm strength. Fresh snow will be transported, naturally triggered avalanches will be possible from the snowdrifts. On Friday night, a warm front will bring another round of precipitation from the northwest.

#### Avalanche problems



#### Danger ratings

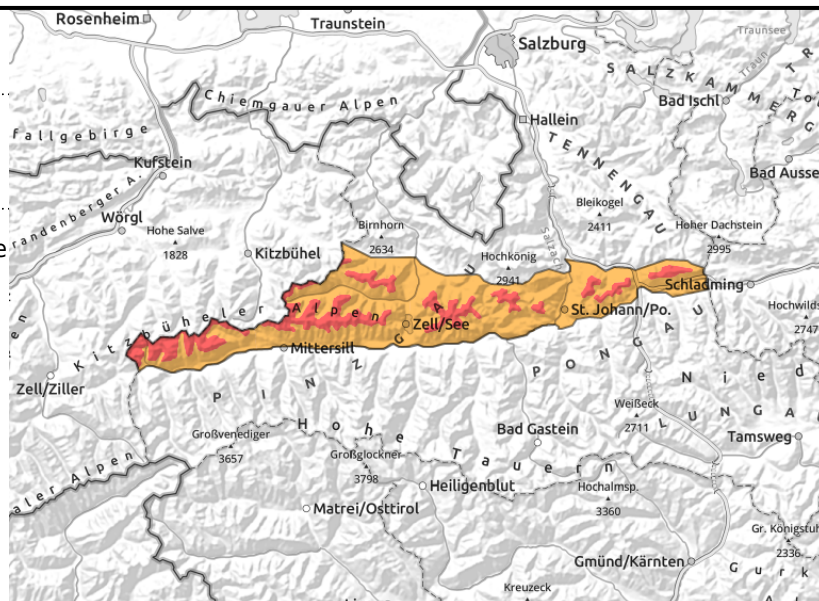
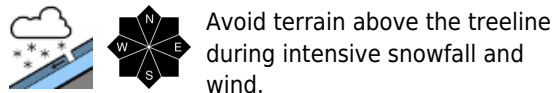


#### Expositions



## Avalanche report for Thursday, 02.02.2023, afternoon

**Oberpinzgauer Grasberge, Kitzbüheler Alpen, Glemmtal, Dientner Grasberge, Pongauer Grasberge**



### Increasing danger during the day. A treacherous situation for winter sports enthusiasts.

Avalanche danger will increase during the day. Above the treeline, danger will be HIGH (Danger Level 4).

Fresh snowdrift masses in all aspects, also distant from ridgeline and near the treeline, can be triggered even by one person and grow to medium size. Danger zones will increase in size and frequency during the course of the day: as of afternoon in all aspects. Avalanches can be large-sized. Medium-to-large sized naturally triggered avalanches are possible and these releases can fracture down to weak layers in the snowpack and grow larger still.

Below the treeline the situation is more favourable. Avalanches can trigger also there, esp. in untracked terrain, forest lanes, and grow to medium size. Beware the runout zones of avalanches which release further up. A great deal of experience is essential - as well as much restraint - in outlying terrain.

### Snowpack structure

On Thursday fresh snow is expected (40-60 cm), more from place to place, the highest intensity snowfall will be in late afternoon and early evening. Snowfall level: 400-700 m. Strong NW winds. Many layers of fresh snow and drifts are bonding poorly with the old snowpack, making them prone to trigger while the snowfall is going on. In the lower part of the snowpack are trigger-sensitive weak layers which can be triggered with ease as a slab avalanche by the weight of fresh snow and snowdrifts.

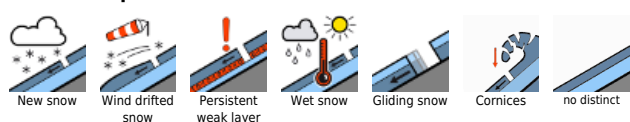
### Weather

The Northern Alps will be shrouded in cloud, snow showers will pass through in the morning. Further south, the clouds will disperse somewhat, but visibility will remain flat. Strong to stormy W/NW winds. At 2000 m: -7 degrees; at 3000 m: -13 degrees.

### Outlook

On Friday the precipitation will ease, but winds will intensify in the afternoon anew, reach storm strength. Fresh snow will be transported, naturally triggered avalanches will be possible from the snowdrifts. On Friday night, a warm front will bring another round of precipitation from the northwest.

#### Avalanche problems



#### Danger ratings



#### Expositions



---

**Avalanche problems**



**Danger ratings**



**Expositions**

