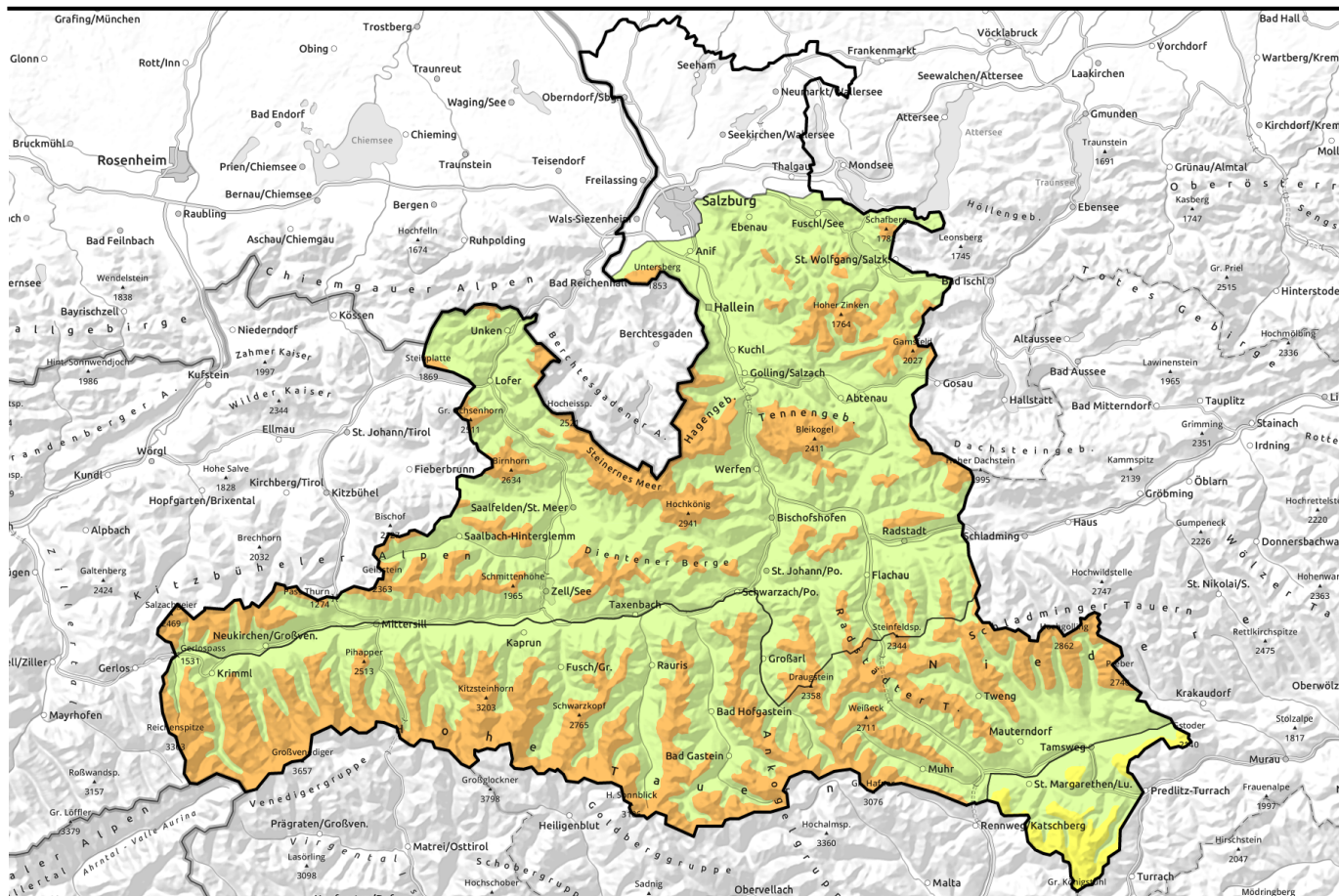


Avalanche report for Tuesday, 31.01.2023



Fresh snowfall and stormy winds: increase in avalanche danger



Nockberge

1800 m



Goldberggruppe Nord, Glocknergruppe Nord, Glocknergruppe Alpenhauptkamm, Großvenedigergruppe Nord, Großvenedigergruppe Alpenhauptkamm, Goldberggruppe Alpenhauptkamm, Niedere Tauern Alpenhauptkamm, Niedere Tauern Süd, Ankogelgruppe, Muhr



forestline

Dientner Grasberge, Loferer und Leoganger Steinberge, Chiemgauer Alpen, Heutal, Reiteralpe, Steinernes Meer, Hochkönig, Hagengebirge, Göllstock, Osterhorngruppe, Gamsfeldgruppe, Untersbergstock, Tennengebirge, Gosaukamm, Pongauer Grasberge, Kitzbüheler Alpen, Glemmtal, Oberpinzgauer Grasberge, Niedere Tauern Nord



Avalanche problems



Danger ratings



Expositions

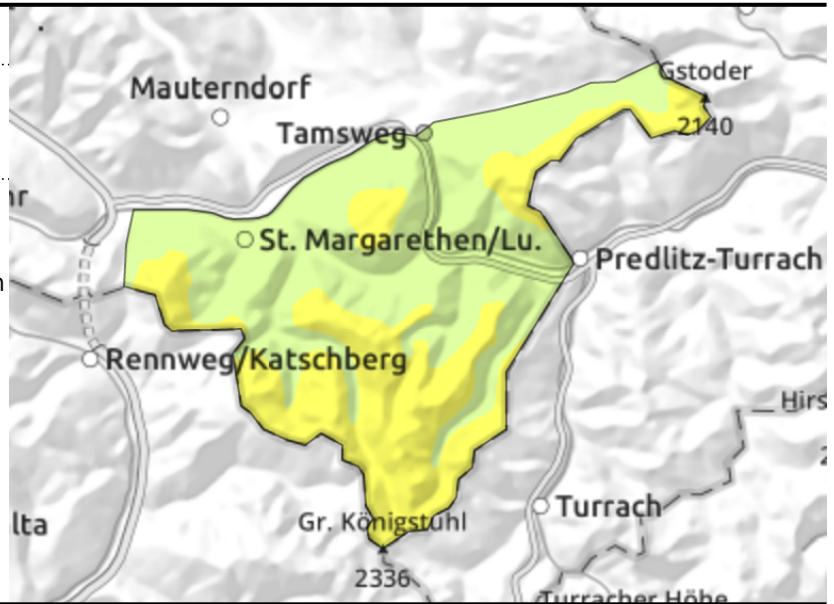


Avalanche report for **Tuesday, 31.01.2023**

Nockberge



avoid fresh snowdrifts, esp. on very steep ridgeline slopes and behind abrupt discontinuities in the terrain



Caution: trigger-sensitive snowdrift accumulations

Avalanche danger above 1800 m is MODERATE, below that altitude danger is LOW.

Fresh snowdrifts from Friday on E/S/W facing slopes are often prone to triggering, also distant from ridgelines with intensifying winds. Avalanches of small-to-medium size can be triggered even by minimum additional loading on very steep slopes. Danger zones occur esp. near ridgelines, in gullies and bowls and behind abrupt discontinuities in the terrain. They are easily recognized with adequate visibility and should be circumvented.

Superficial releases can in isolated cases fracture down to more deeply embedded layers inside the snowpack and grow to larger size, particularly on shady slopes above 2200 m. These danger zones are not visible to the naked eye.

Snowpack structure

The NW wind will blow at strong-to-storm strength especially in the early part of the day, and generated fresh avalanche accumulations, deposit them on E/S/W facing slopes often atop soft layers where there are prone to triggering. The fresh snow from last week has settled and consolidated well for the most part. In the Tauern there are isolated weak layers in the snowpack fundament, sometimes melt-freeze crusts, particularly on shady slopes at high altitudes.

Weather

On Tuesday, weather in the Nockberge will be quite sunny, clouds will move in only later in the day and it will remain dry. Winds will initially be stormy, then ease. At 1000 m: +2 degrees; at 2000 m: -7 degrees.

Outlook

On Wednesday, mostly cloudy, strong NW winds, initially no precipitation. No significant change is expected in avalanche danger levels. Caution urged towards small-to-medium avalanches.

Avalanche problems



Danger ratings

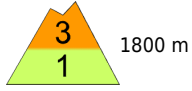
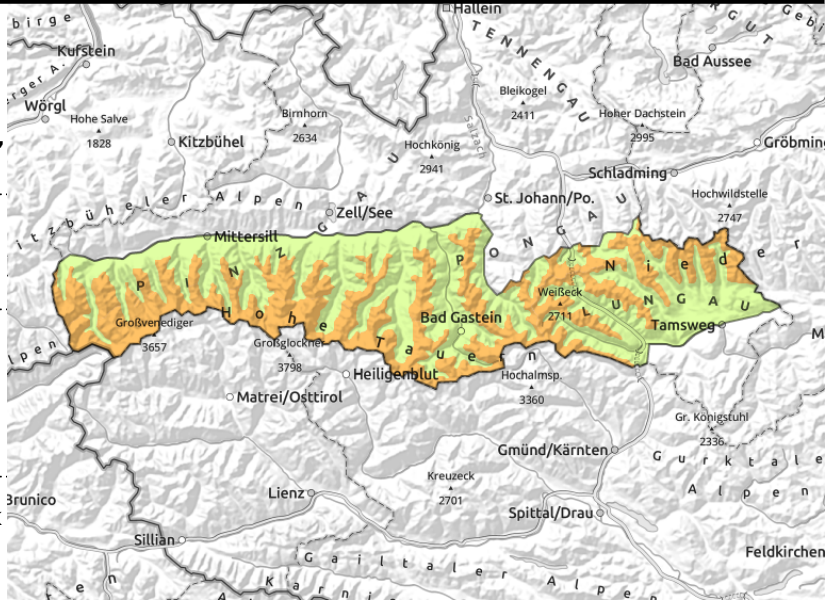


Expositions



Avalanche report for Tuesday, 31.01.2023

Goldberggruppe Nord, Glocknergruppe Nord, Glocknergruppe Alpenhauptkamm, Großvenedigergruppe Nord, Großvenedigergruppe Alpenhauptkamm, Goldberggruppe Alpenhauptkamm, Niedere Tauern Alpenhauptkamm, Niedere Tauern Süd, Ankogelgruppe, Muhr



Fresh snowdrift accumulations being generated during the daytime. Caution at high altitudes.



special caution urged near rock precipices and in very steep convex terrain

Bonded drifts atop weak layers

Avalanche danger is CONSIDERABLE above 1800 m, LOW below that altitude. Fresh snowdrifts are found in all aspects, also distant from ridgelines, including distant from ridgelines. Fresh snowdrifts from Friday on E/S/W facing slopes are often prone to triggering, also distant from ridgelines with intensifying winds. Avalanches of small-to-medium size can be triggered even by minimum additional loading on very steep slopes. Danger zones occur esp. near ridgelines, in gullies and bowls and behind abrupt discontinuities in the terrain. They are easily recognized with adequate visibility and should be circumvented. In addition, isolated weak layers inside the snowpack are prone to triggering. Least favourable are very steep shady slopes above 2200 m and sunny slopes at high altitudes (>2800m). As a result of the increased snow masses from last week these layers are ordinarily triggerable only by large additional loading. On very steep (>35°) slopes or at rock precipices (transitions from shallow to deep snow), one sole skier can initiate fractures down to deeper snowpack layers. Avalanche releases are generally medium-sized.

Snowpack structure

On Monday night 10-15 cm of fresh snow is expected. Stormy NW winds will transport it, exposed zones will be utterly windblown. In wind-protected terrain the drifts will be deposited, often atop an unfavourable snowpack. Cold snow beneath it, surface hoar on top of it with which the drifts will bond poorly. The middle part of the snowpack is generally quite compact and well consolidated. The lowermost part has weak layer prone to triggering on shady slopes above 2200 m, on sunny slopes above 2800 m. Sometimes these are riddled with faceted crystals, sometimes with intermediate melt-freeze crusts. Near ground level there is depth hoar.

Weather

On Tuesday, mostly sunny, decent visibility, dry. Winds: strong to stormy from W/NW. At 2000 m: -10 to -6 degrees; at 3000 m: -11 degrees.

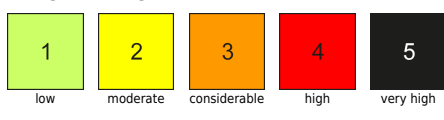
Outlook

On Wednesday, minor snowfall, moderate to strong NW winds. Caution urged towards fresh snowdrifts. Latent persistent weak layer.

Avalanche problems



Danger ratings

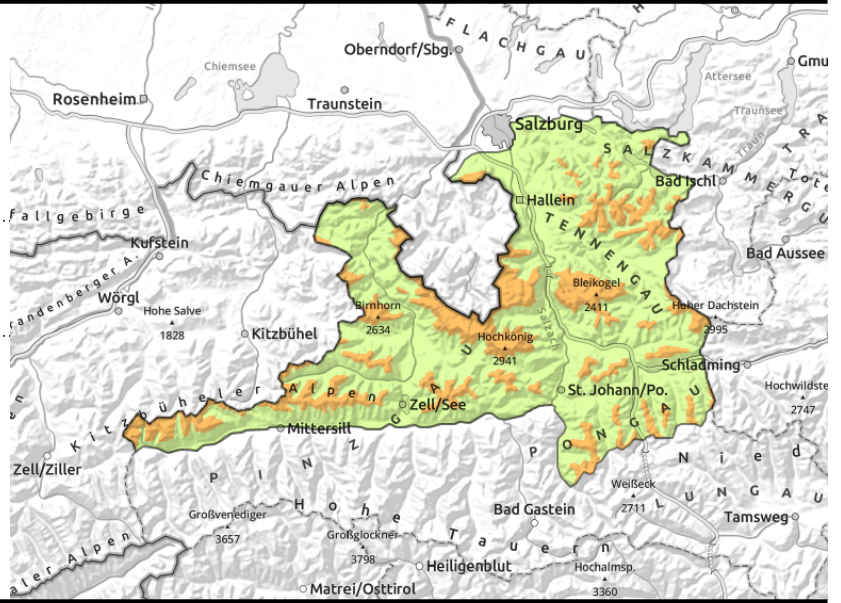


Expositions



Avalanche report for Tuesday, 31.01.2023

Dientner Grasberge, Loferer und Leoganger Steinberge, Chiemgauer Alpen, Heutal, Reiteralpe, Steinernes Meer, Hochkönig, Hagengebirge, Göllstock, Osterhorngruppe, Gamsfeldgruppe, Untersbergstock, Tennengebirge, Gosaukamm, Pongauer Grasberge, Kitzbüheler Alpen, Glemmtal, Oberpinzgauer Grasberge, Niedere Tauern Nord



Caution urged towards trigger-sensitive snowdrifts, being generated afresh by stormy winds.

Caution urged towards trigger-sensitive snowdrifts

Fresh snowdrifts are found in all aspects, also distant from ridgelines, including distant from ridgelines. Fresh snowdrifts from Friday on E/S/W facing slopes are often prone to triggering, also distant from ridgelines with intensifying winds. Avalanches of small-to-medium size can be triggered even by minimum additional loading on very steep slopes. Danger zones occur esp. near ridgelines, in gullies and bowls and behind abrupt discontinuities in the terrain. They are easily recognized with adequate visibility and should be circumvented.

A prudent route selection is important. Orient your tracks along ridgelines and crests if possible.

Snowpack structure

On Monday night 10-15 cm of fresh snow is expected. Stormy NW winds will transport it, exposed zones will be utterly windblown. In wind-protected terrain the drifts will be deposited, often atop an unfavourable snowpack. Cold snow beneath it, surface hoar or light fluffy snow on top of it with which the drifts will bond poorly. The middle part of the snowpack is generally quite compact and well consolidated. The lowermost part has weak layer prone to triggering on shady slopes above 2200 m, on sunny slopes above 2800 m. Sometimes these are riddled with faceted crystals, sometimes with intermediate melt-freeze crusts. Near ground level there is depth hoar.

Weather

On Tuesday, mostly sunny, decent visibility, dry. Winds: strong to stormy from W/NW. At 2000 m: -10 to -6 degrees; at 3000 m: -11 degrees.

Outlook

On Wednesday, minor snowfall, moderate to strong NW winds. Caution urged towards fresh snowdrifts. Latent persistent weak layer.

Translated by Jeffrey McCabe, www.creativtrans.com

Avalanche problems



Danger ratings



Expositions

