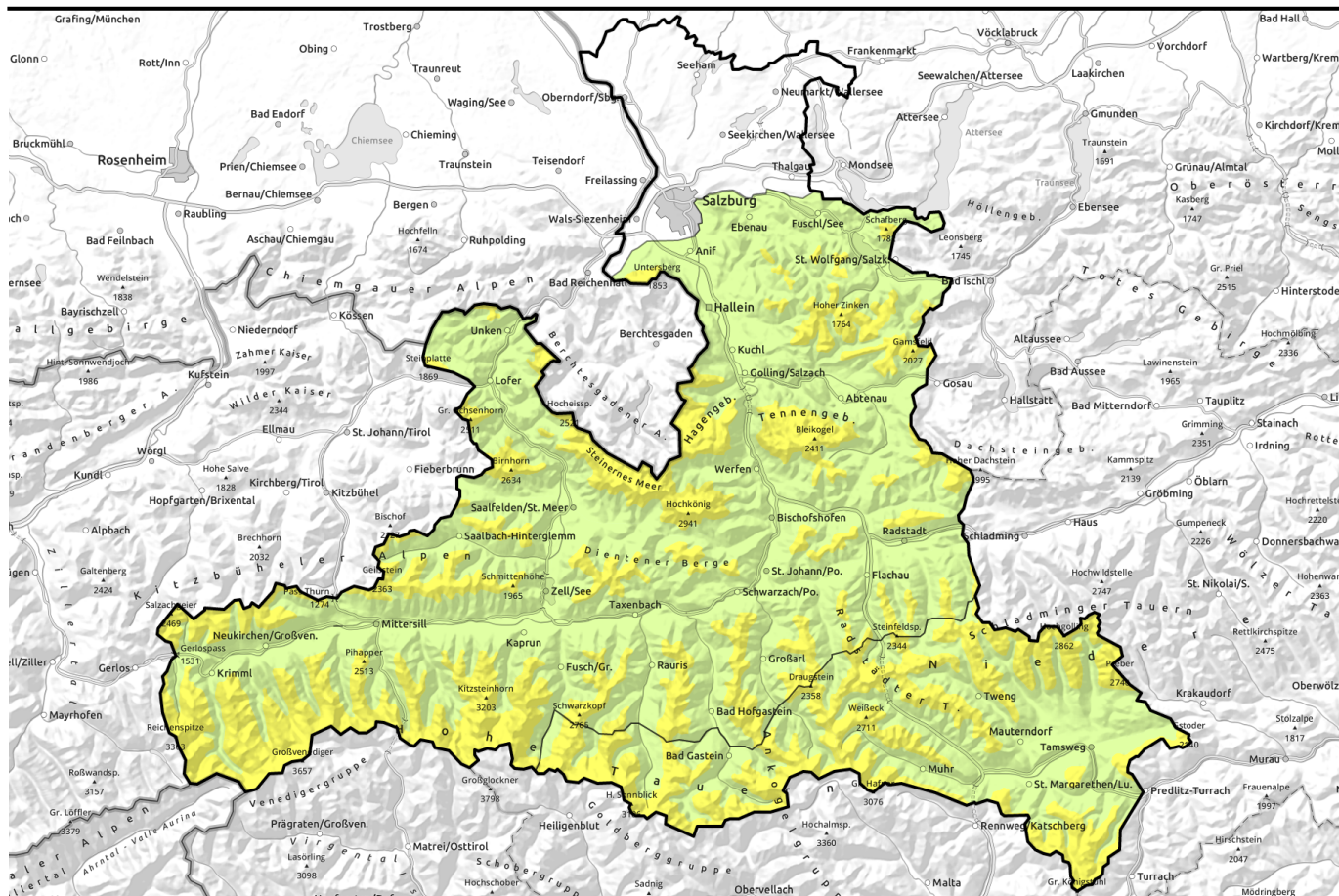


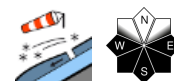
Avalanche report for Saturday, 28.01.2023



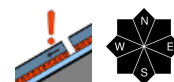
Freshly generated snowdrifts from northerly foehn wind



Nockberge, Niedere Tauern Süd, Ankogelgruppe, Muhr, Niedere Tauern Alpenhauptkamm, Goldberggruppe Alpenhauptkamm



Kitzbüheler Alpen, Glemmtal, Oberpinzgauer Grasberge, Loferer und Leoganger Steinberge, Tennengebirge, Gosaukamm, Steinernes Meer, Hochkönig, Hagengebirge, Göllstock, Dientner Grasberge, Pongauer Grasberge, Chiemgauer Alpen, Heutal, Reiteralpe, Untersbergstock, Niedere Tauern Nord, Goldberggruppe Nord, Glocknergruppe Nord, Glocknergruppe Alpenhauptkamm, Großvenedigergruppe Nord, Großvenedigergruppe Alpenhauptkamm, Osterhorngruppe, Gamsfeldgruppe



Avalanche problems



Danger ratings

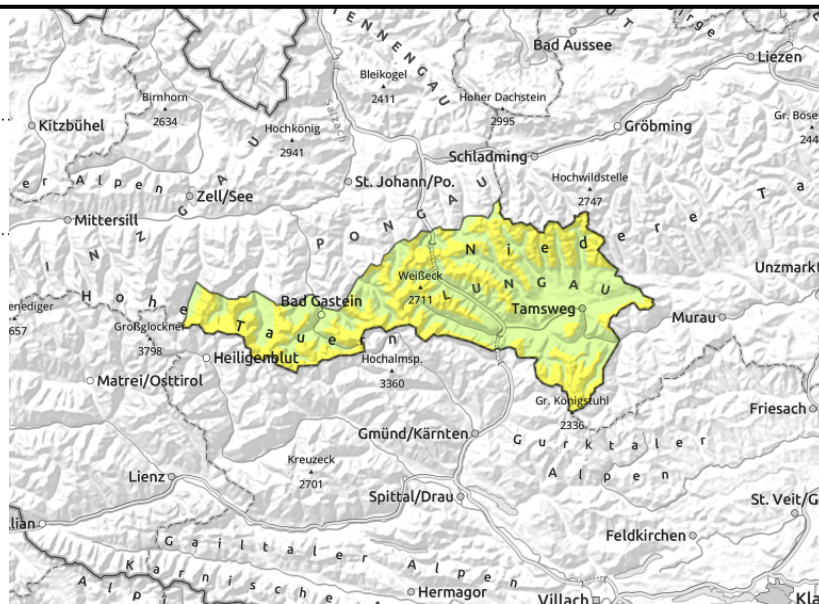
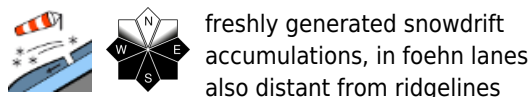


Expositions



Avalanche report for Saturday, 28.01.2023

Nockberge, Niedere Tauern Süd, Ankogelgruppe, Muhr, Niedere Tauern Alpenhauptkamm, Goldberggruppe Alpenhauptkamm



Trigger-sensitive snowdrift masses in wind-protected zones

Avalanche danger above the treeline is MODERATE, below that altitude danger is LOW. A slab can be triggered even by minimum additional loading in steep terrain. Danger zones occur mostly near ridgelines, in steep gullies and leeward bowls. In the Tauern, superficial avalanches can fracture down to more deeply embedded layers inside the snowpack and grow to large size.

Snowpack structure

The fresh fallen snow from the beginning of this week has settled, but is still loose. Due to nights of clear skies, thin melt-freeze crusts have formed which is then blanketed by snowdrifts. The fresh snowdrifts are prone to triggering, whereas older snowdrifts are generally well bonded with the old snowpack. Inside the old snowpack are weak layers bordering melt-freeze crusts and in the depth hoar of the fundament.

Weather

On Saturday, visibility in the mountains will frequently be reduced due to heavy clouds. In the morning hours, light snowfall is possible over widespread areas, in the afternoon hours it will remain dry by and large, apart from the northern barrier cloud regions. Winds will be light to moderate, in the Lungau Nockberge and Radstadt Tauern also blowing at brisk strength from northerly directions. At 2000 m: -11 degrees; at 3000 m: -13 degrees.

On Sunday, reduced visibility to start with at low altitudes due to high fogbanks, above them the day will launch with lots of sunshine. The pleasant conditions with good visibility are expected to persist through the next few days.

Outlook

On Sunday, no change. On Monday, rising avalanche danger levels due to snowfall and wind.

Avalanche problems



Danger ratings

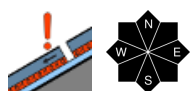
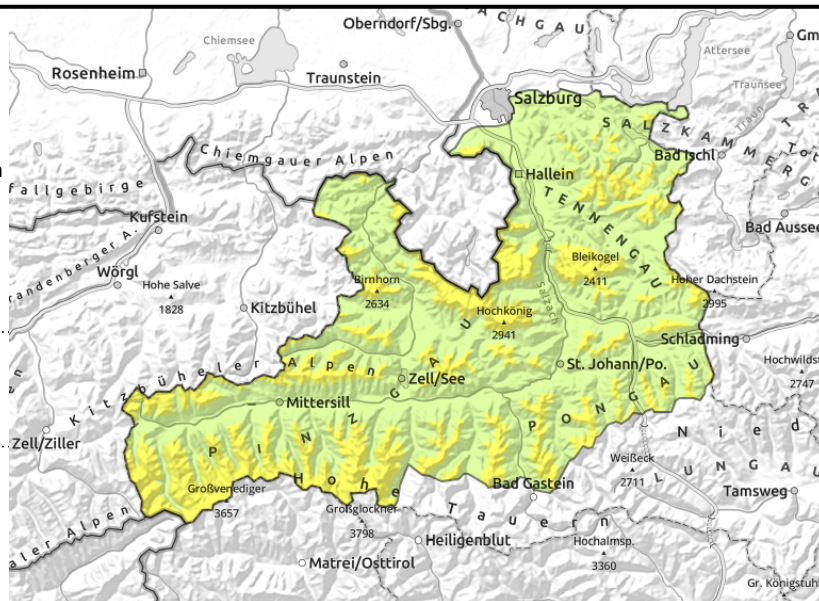


Expositions



Avalanche report for **Saturday, 28.01.2023**

Kitzbüheler Alpen, Glemmtal, Oberpinzgauer Grasberge, Loferer und Leoganger Steinberge, Tennengebirge, Gosaukamm, Steinernes Meer, Hochkönig, Hagengebirge, Göllstock, Dientner Grasberge, Pongauer Grasberge, Chiemgauer Alpen, Heutal, Reiteralpe, Untersbergstock, Niedere Tauern Nord, Goldberggruppe Nord, Glocknergruppe Nord, Glocknergruppe Alpenhauptkamm, Großvenedigergruppe Nord, Großvenedigergruppe Alpenhauptkamm, Osterhorngruppe, Gamsfeldgruppe



blanketed surface hoar, not visible to the naked eye; unfavourable snowpack layering: faceted crystals, hard crusts, embedded hoar

A few cm of fresh snow blanket the surface hoar

Avalanche danger above 2000 m is MODERATE, below that altitude danger is LOW. In general, bonding between fresh snow layers is lacking in order to form a slab atop it all.

Blanketed surface hoar constitutes a trigger-sensitive weak layer. Generally, however, there is not slab on top.

On the Main Alpine Ridge on south-facing slopes, fresh snowdrifts can form: small but prone to triggering. Older snowdrift accumulations can be triggered especially by large additional loading. Danger zones occur mostly on west-facing slopes. In high alpine regions, superficial releases can fracture down to more deeply embedded layers inside the snowpack and the avalanches can grow to larger size.

Snowpack structure

During the last few nights, surface hoar has formed, then blanketed by a few cm of fresh fallen snow. In places, a thin melt-freeze crust lies beneath the fresh snow.

Older snowdrift accumulations are generally well consolidated with the old snowpack. Inside the old snowpack there are ground-level layers which are weak, bordering on melt-freeze crusts and inside the depth hoar of the fundament.

Weather

On Saturday, visibility in the mountains will frequently be reduced due to heavy clouds. In the morning hours, light snowfall is possible over widespread areas, in the afternoon hours it will remain dry by and large, apart from the northern barrier cloud regions. At 2000 m: -11 degrees; at 3000 m: -13 degrees.

On Sunday, reduced visibility to start with at low altitudes due to high fogbanks, above them the day will launch with lots of sunshine. The pleasant conditions with good visibility are expected to persist through the next few days.

Outlook

On Sunday, no change. On Monday, rising avalanche danger levels due to snowfall and wind.

Translated by Jeffrey McCabe, www.creativtrans.com

Avalanche problems



Danger ratings



Expositions

