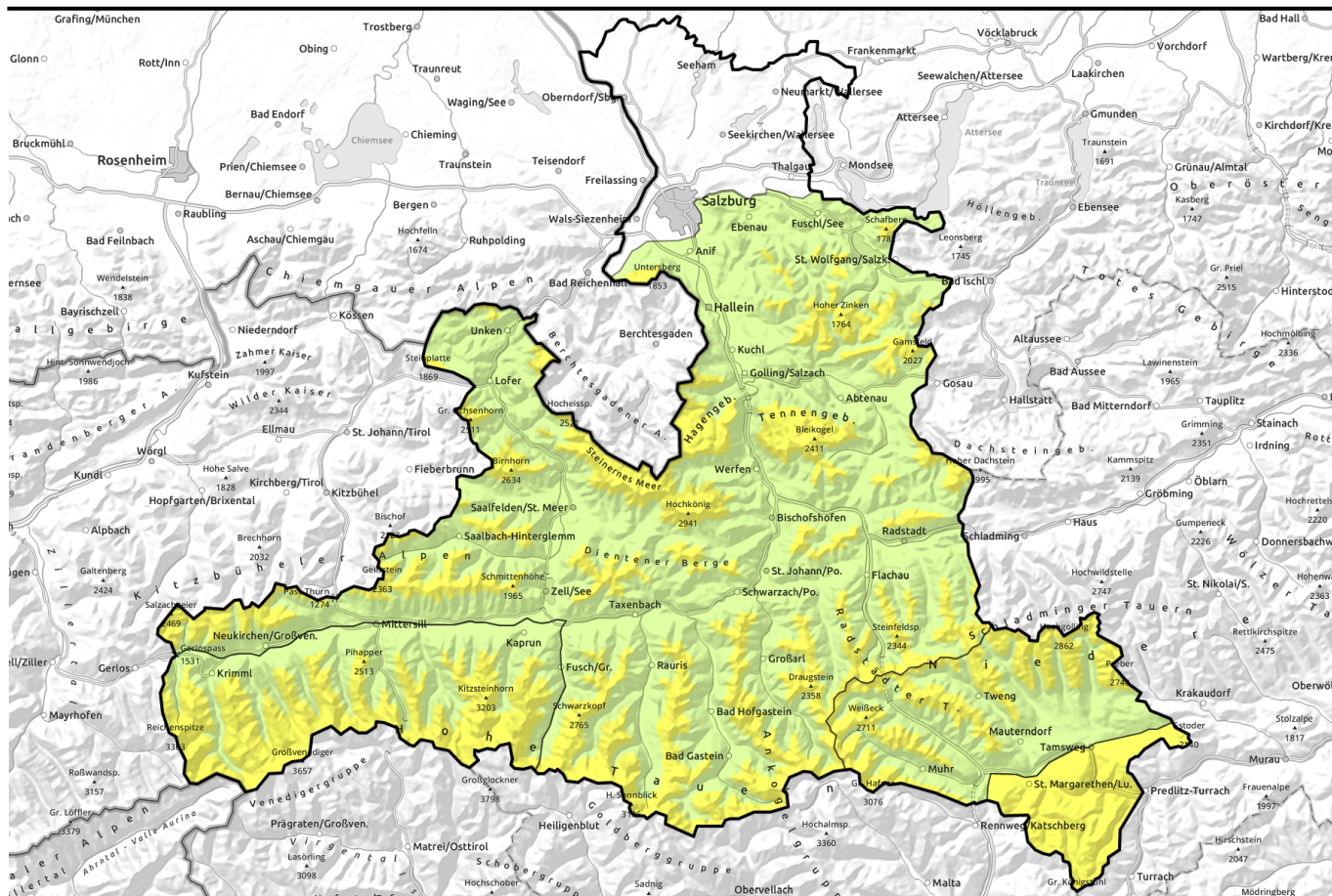


Avalanche report for Friday, 27.01.2023



Some fresh snow in northern regions, northerly foehn wind in the south

	Nockberge		
	forestline Großvenedigergruppe Alpenhauptkamm, Glocknergruppe Alpenhauptkamm, Glocknergruppe Nord, Großvenedigergruppe Nord		
	forestline Ankogelgruppe, Muhr, Niedere Tauern Süd		
	forestline Kitzbüheler Alpen, Glemmtal, Oberpinzgauer Grasberge, Loferer und Leoganger Steinberge, Tennengebirge, Gosaukamm, Steinernes Meer, Hochkönig, Hagengebirge, Göllstock, Dientner Grasberge, Pongauer Grasberge, Chiemgauer Alpen, Heutal, Reiteralpe, Untersbergstock, Osterhorngruppe, Gamsfeldgruppe, Goldberggruppe Nord, Goldberggruppe Alpenhauptkamm, Niedere Tauern Nord, Niedere Tauern Alpenhauptkamm		

Avalanche problems



Danger ratings

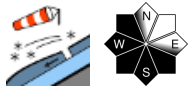


Expositions

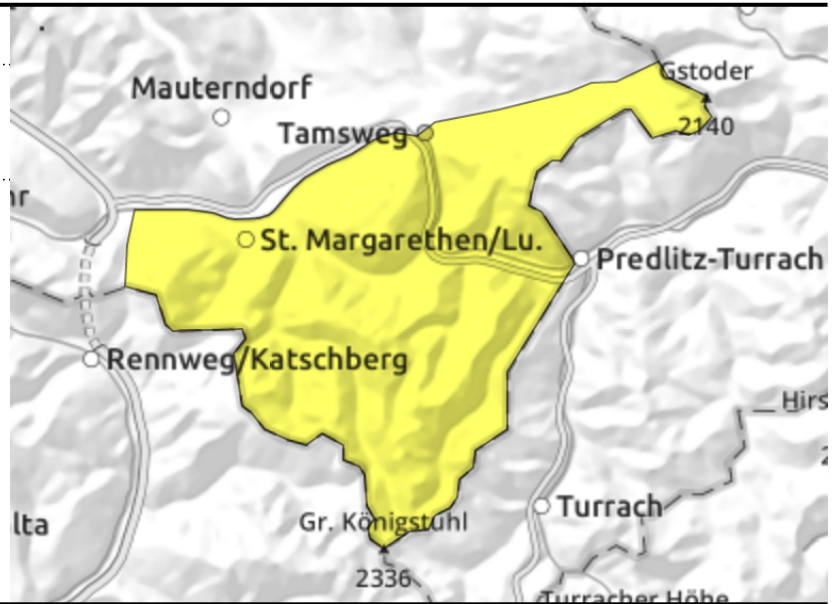


Avalanche report for Friday, 27.01.2023

Nockberge



freshly generated snowdrift accumulations, near ridgelines



Fresh snowdrift masses due to northerly foehn wind

Avalanche danger is MODERATE. Fresh snowdrifts will form on Friday on south-facing slopes, but even older snowdrift accumulations can be triggered. Snowdrifts can be triggered as a medium-size slab avalanches even by minimum additional loading. Most danger zones occur on W/S/SE facing slopes, both near to and distant from ridgelines, and in steep gullies and bowls in all aspects.

Snowpack structure

The fresh fallen snow from the beginning of this week has settled, but is still loose. Due to nights of clear skies, surface hoar has formed which is then blanketed by snowdrifts generated by intensifying northerly winds. Wherever the sun has moistened the snowpack superficially on Wednesday, a thin melt-freeze crust was able to form.

Older snowdrift accumulations lie deposited in gullies and leeward bowls, are often blanketed with fresher snowfall. Bonding between the fresh snow which fell amid milder temperatures and the cold snow beneath it is often poor.

Weather

On Friday, the peaks will mostly be shrouded in fog-like clouds. In the Lungau Nockberge there will be extended dry phases, but northerly foehn winds will be blowing. AT 2000 m: about -11 degrees.

Also on Saturday, mostly heavy cloud over the mountains, only the highest summits will be in the clear. Light snowfall is possible during the course of the day.

Outlook

Little change is expected.

Avalanche problems



Danger ratings

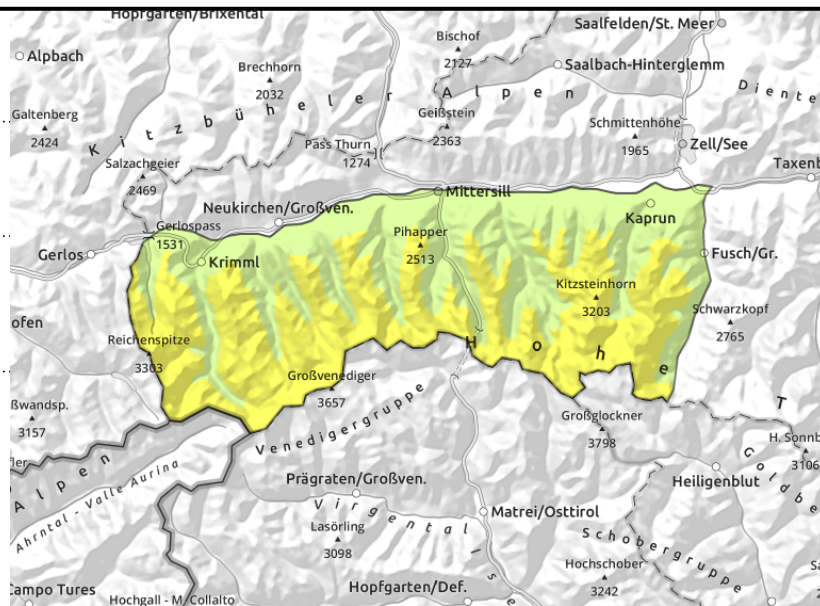
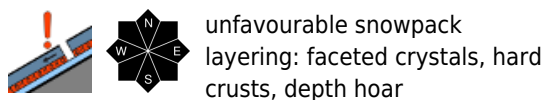
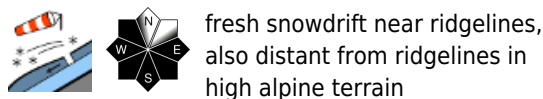


Expositions



Avalanche report for Friday, 27.01.2023

Großvenedigergruppe Alpenhauptkamm, Glocknergruppe Alpenhauptkamm, Glocknergruppe Nord, Großvenedigergruppe Nord



Danger zones: in gullies and on esp. on steep ridgeline slopes

Avalanche danger above the treeline is MODERATE, below that altitude danger is LOW. The variable winds in recent days have loaded E/NW slopes with drifts. A medium slab avalanche can be triggered even by minimum additional loading. Avalanche prone locations occur mostly near ridgelines, also distant from ridgelines in high alpine regions, and in steep gullies and bowls. In high alpine regions, superficial avalanches can fracture down to more deeply embedded layers and grow to large size.

Snowpack structure

The fresh snow over the weekend was able to settle but is still loose. Due to nights of clear skies, surface hoar has formed which is then blanketed by snowdrifts generated by intensifying northerly winds. Wherever the sun has moistened the snowpack superficially on Wednesday, a thin melt-freeze crust was able to form.

Particularly on shady slopes, the snowdrift accumulations are inadequately bonded with the old snowpack. Potential fracture points for slab avalanches lie mostly in the very cold and loose now-blanketed snow. Apart from that there are weak layers inside the old snowpack: melt-freeze crusts and depth hoar in the fundament.

Weather

On Friday, the peaks will mostly be shrouded in fog-like clouds. In the Lungau Nockberge there will be extended dry phases, but northerly foehn winds will be blowing. AT 2000 m: about -11 degrees, at 3000 m: -12 degrees.

Also on Saturday, mostly heavy cloud over the mountains, only the highest summits will be in the clear. Light snowfall is possible during the course of the day.

Outlook

Little change is expected.

Avalanche problems



Danger ratings



Expositions

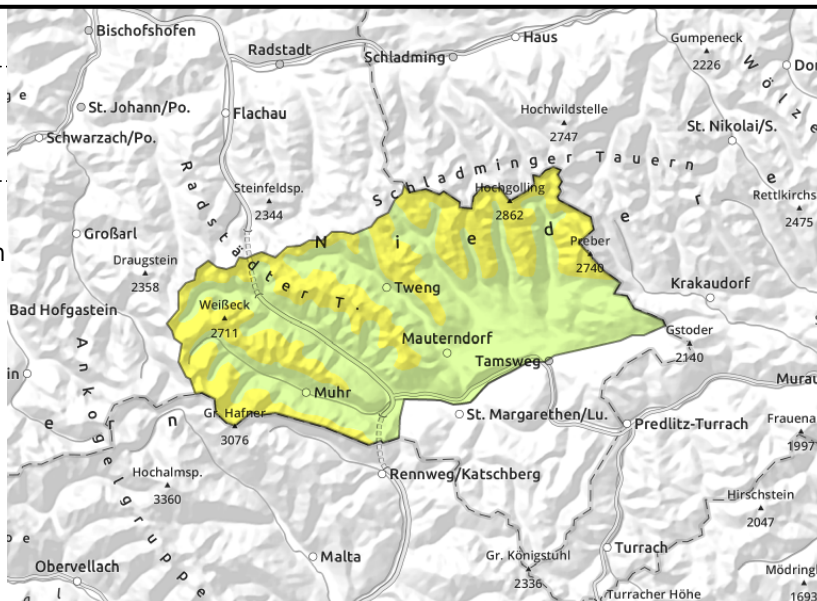


Avalanche report for Friday, 27.01.2023

Ankogelgruppe, Muhr, Niedere Tauern Süd



Some fresh snow in northern regions, northerly foehn wind in the south



freshly generated snowdrift accumulations due to northerly foehn winds

Avalanche danger above the treeline is MODERATE, below that altitude danger is LOW. Fresh snowdrifts will form on Friday on south-facing slopes, but even older snowdrift accumulations can be triggered. Snowdrifts can be triggered as a medium-size slab avalanches even by minimum additional loading. In high alpine regions, superficial avalanche releases - including danger zones distant from ridgelines - can then fracture down to more deeply embedded layers inside the snowpack and grow to large size.

Snowpack structure

The fresh fallen snow from the beginning of this week has settled, but is still loose. Due to nights of clear skies, surface hoar has formed which is then blanketed by snowdrifts generated by intensifying northerly winds. Wherever the sun has moistened the snowpack superficially on Wednesday, a thin melt-freeze crust was able to form.

Particularly on shady slopes, the snowdrift accumulations are inadequately bonded with the old snowpack. Potential fracture points for slab avalanches lie mostly in the very cold and loose now-blanketed snow. Apart from that there are weak layers inside the old snowpack: melt-freeze crusts and depth hoar in the fundament.

Weather

On Friday, the peaks will mostly be shrouded in fog-like clouds. In the Lungau Nockberge there will be extended dry phases, but northerly foehn winds will be blowing. AT 2000 m: about -11 degrees, at 3000 m: -12 degrees.

Also on Saturday, mostly heavy cloud over the mountains, only the highest summits will be in the clear. Light snowfall is possible during the course of the day.

Outlook

Little change is expected.

Avalanche problems



Danger ratings

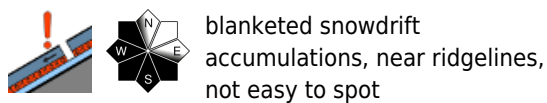
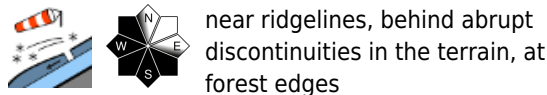
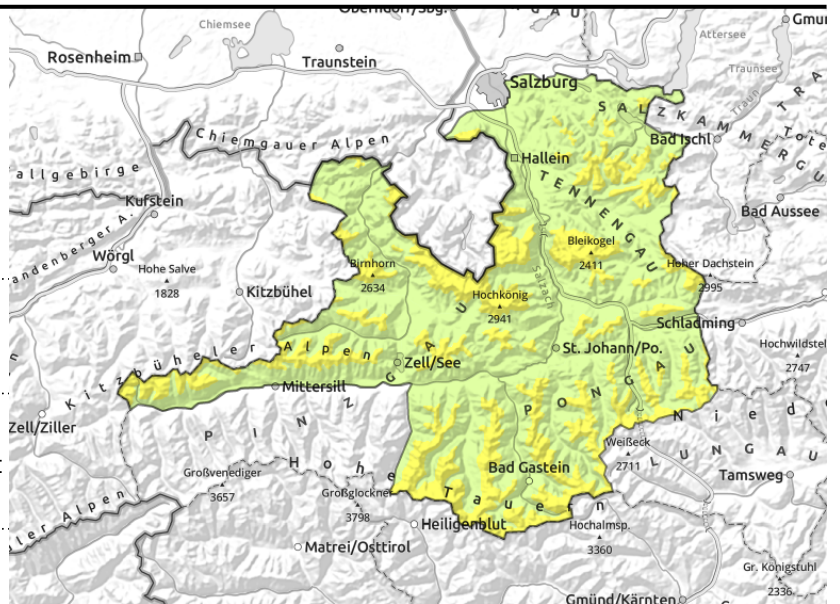


Expositions



Avalanche report for Friday, 27.01.2023

Kitzbüheler Alpen, Glemmtal, Oberpinzgauer Grasberge, Loferer und Leoganger Steinberge, Tennengebirge, Gosaukamm, Steinernes Meer, Hochkönig, Hagengebirge, Göllstock, Dientner Grasberge, Pongauer Grasberge, Chiemgauer Alpen, Heutal, Reiteralpe, Untersbergstock, Osterhorngruppe, Gamsfeldgruppe, Goldberggruppe Nord, Goldberggruppe Alpenhauptkamm, Niedere Tauern Nord, Niedere Tauern Alpenhauptkamm



Just a few cm of fresh snow

Avalanche danger above the timberline is moderate, below that altitude danger is low. Snowdrifts occur near ridgelines, in high alpine regions also behind abrupt discontinuities in the terrain, increasingly on W/S/SE facing slopes and in steep gullies and bowls. They are sometimes blanketed with fresh fallen snow, making them difficult to recognize. A slab of medium size can be triggered in steep terrain even by minimum additional loading.

Snowpack structure

The fresh fallen snow from the beginning of this week has settled, but is still loose, esp. on shady slopes. Due to nights of clear skies, surface hoar has formed which is then blanketed by snowdrifts generated by intensifying northerly winds. Wherever the sun has moistened the snowpack superficially on Wednesday, a thin melt-freeze crust was able to form. Particularly on shady slopes, the snowdrift accumulations are inadequately bonded with the old snowpack. Potential fracture points for slab avalanches lie mostly in the very cold and loose now-blanketed snow. Apart from that there are weak layers inside the old snowpack: melt-freeze crusts and depth hoar in the fundament.

Weather

On Friday, the peaks will mostly be shrouded in fog-like clouds. In the Lungau Nockberge there will be extended dry phases, but northerly foehn winds will be blowing. AT 2000 m: about -11 degrees, at 3000 m: -12 degrees. Also on Saturday, mostly heavy cloud over the mountains, only the highest summits will be in the clear. Light snowfall is possible during the course of the day.

Outlook

Little change is expected.

Translated by Jeffrey McCabe, www.creativtrans.com

Avalanche problems



Danger ratings



Expositions

