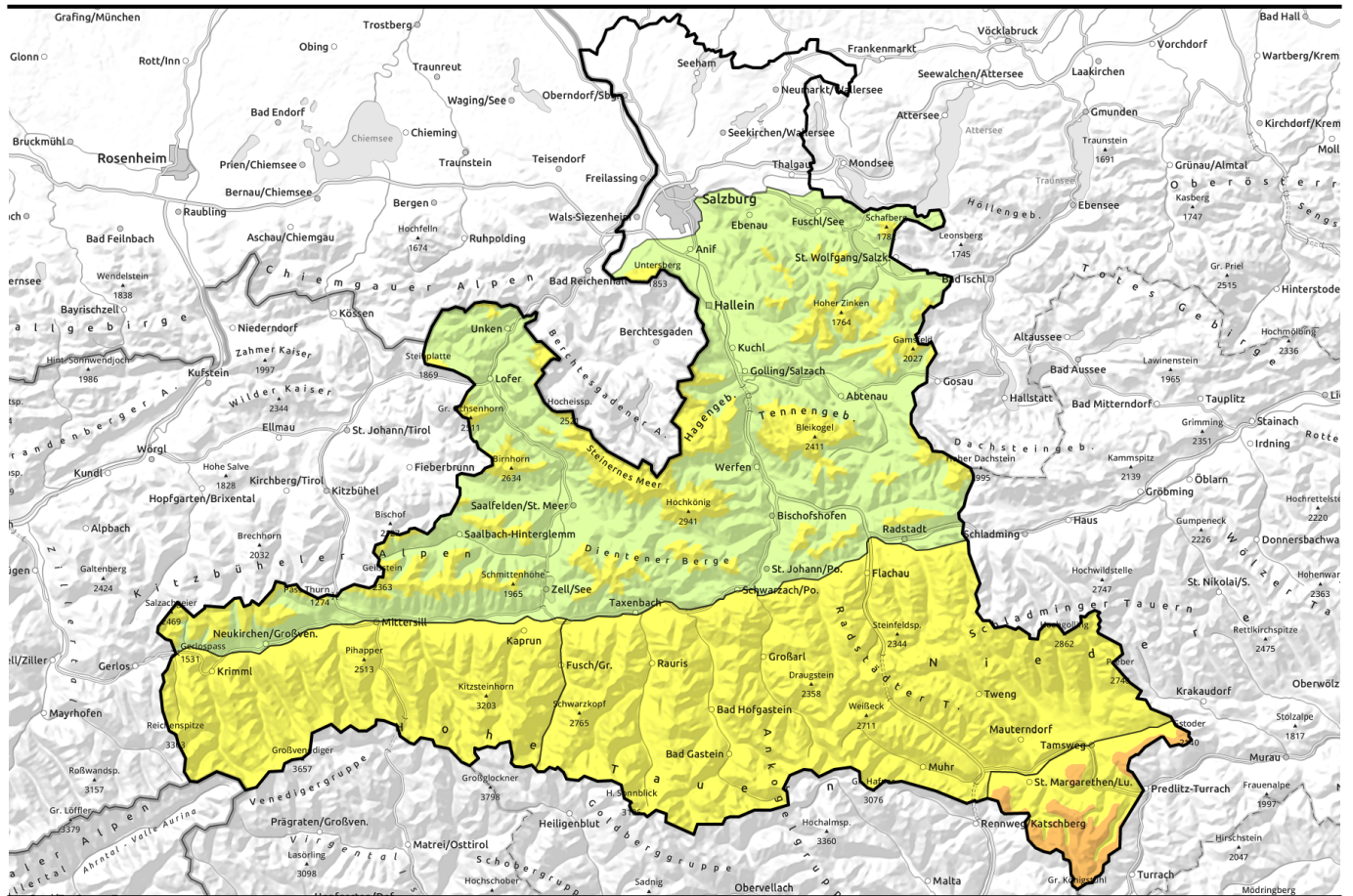


Avalanche report for Thursday, 26.01.2023



Temperature dropping after high-pressure zone

	3 2 forestline	Nockberge	
	2	Großvenedigergruppe Alpenhauptkamm, Glocknergruppe Alpenhauptkamm, Glocknergruppe Nord, Großvenedigergruppe Nord	
	2	Niedere Tauern Alpenhauptkamm, Goldberggruppe Alpenhauptkamm, Goldberggruppe Nord, Niedere Tauern Nord, Ankogelgruppe, Muhr, Niedere Tauern Süd	
	2 1 1800 m	Kitzbüheler Alpen, Glemmtal, Oberpinzgauer Grasberge, Loferer Meer und Leoganger Steinberge, Tennengebirge, Gosaukamm, Steinernes Meer, Hochkönig, Hagengebirge, Göllstock, Dientner Grasberge, Pongauer Grasberge, Chiemgauer Alpen, Heutal, Reiteralpe, Untersbergstock, Osterhorngruppe, Gamsfeldgruppe	

Avalanche problems



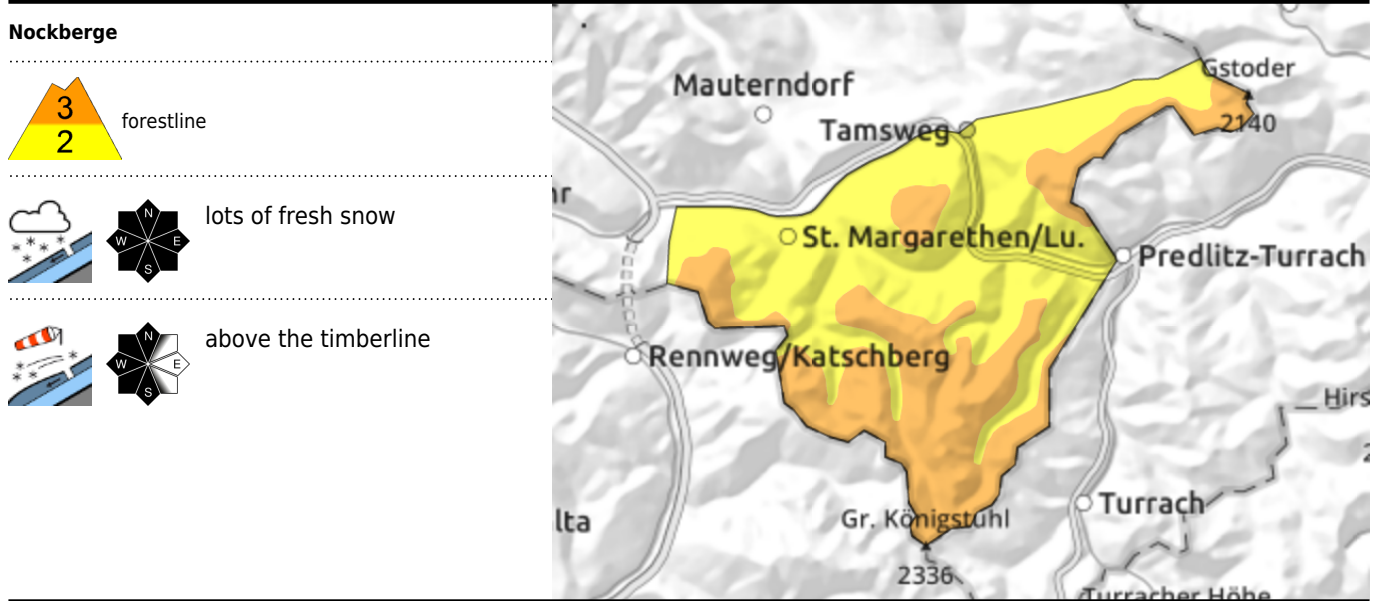
Danger ratings



Expositions



Avalanche report for **Thursday, 26.01.2023**



Danger zones are difficult to recognize

Avalanche danger above the timberline is considerable, below that altitude danger is moderate. Snowdrifts can release a medium-sized slab avalanche even by minimum additional loading. Most avalanche prone locations occur on W/S/E facing slopes, both near to and distant from ridgelines and in steep gullies in all aspects. Avalanche prone locations are often difficult to recognize on-site. Backcountry freeriders and skiers require ample experience to assess these dangers in outlying terrain.

Snowpack structure

The snowpack has settled after lots of snowfall. Due to nights of clear skies, surface hoar has formed. Where the sun has moistened the snowpack on Wednesday, a thin melt-freeze crust could form. Older drifts lie deposited in gullies and bowls, often blanketed by fresher snowfall. Bonding between the fresh snow (which fell amid mild temperatures) and the cold snow beneath it is poor.

Weather

On Thursday, initial sunshine. Visibility will deteriorate during the daytime from the north. In the Lungau Nockberge, brisk northwesterly winds will arise towards evening. Temperatures will drop noticeably. At 2000 m: -6 degrees.

Also on Friday, the peaks will be shrouded in heavy cloud, intermittent snowfall is possible.

Outlook

Northerly foehn winds will transport the snow once again.

Avalanche problems



Danger ratings



Expositions



Avalanche report for **Thursday, 26.01.2023**

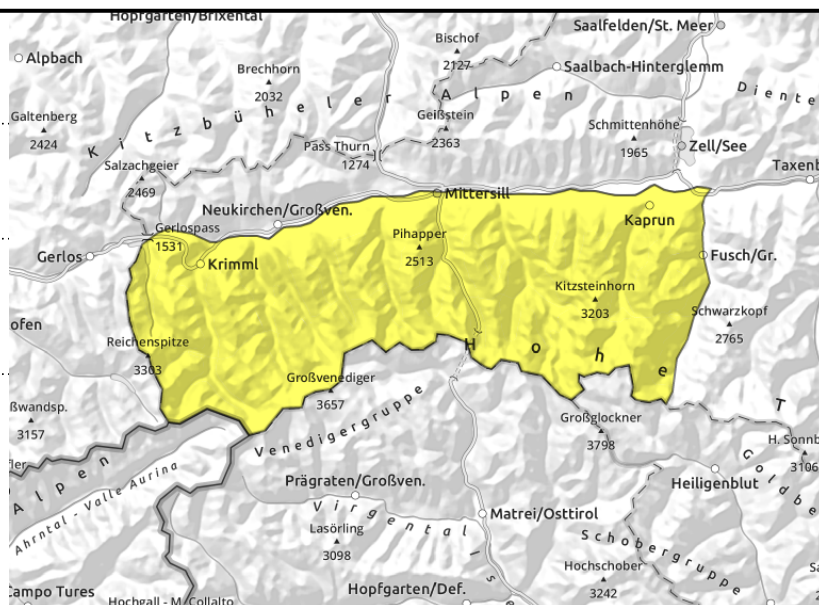
Großvenedigergruppe Alpenhauptkamm, Glocknergruppe Alpenhauptkamm, Glocknergruppe Nord, Großvenedigergruppe Nord



fresh snowdrift near ridgelines, also distant from ridgelines in high alpine terrain



unfavourable snowpack layering: faceted crystals, hard crusts, depth hoar



Danger zones: in gullies and on esp. on steep ridgeline slopes

Avalanche danger is MODERATE. The variable winds in recent days have loaded E/NW slopes with drifts. A medium slab avalanche can be triggered even by minimum additional loading. Avalanche prone locations occur mostly near ridgelines, also distant from ridgelines in high alpine regions, and in steep gullies and bowls. In high alpine regions, superficial avalanches can fracture down to more deeply embedded layers and grow to large size.

Snowpack structure

The huge amounts of cold fresh snow over the last few days were able to settle in the un-windy and intermittently sunny weather. Clear nocturnal skies have formed surface hoar. Where the sun has moistened the snowpack on Wednesday, a thin melt-freeze crust could form.

On shady slopes the snowdrifts have not bonded well with the old snowpack. A potential fracture point is the very cold and loose blanketed snow. Apart from the, the old snowpack has melt-freeze crusts and depth hoar.

Weather

On Thursday, initial sunshine. Visibility will deteriorate during the daytime from the north. In the Lungau Nockberge, brisk northwesterly winds will arise towards evening. Temperatures will drop noticeably. At 2000 m: -6 degrees, at 3000 m: -10 degrees.

Also on Friday, the peaks will be shrouded in heavy cloud, intermittent snowfall is possible.

Outlook

Little change is expected.

Avalanche problems



Danger ratings



Expositions



Avalanche report for Thursday, 26.01.2023

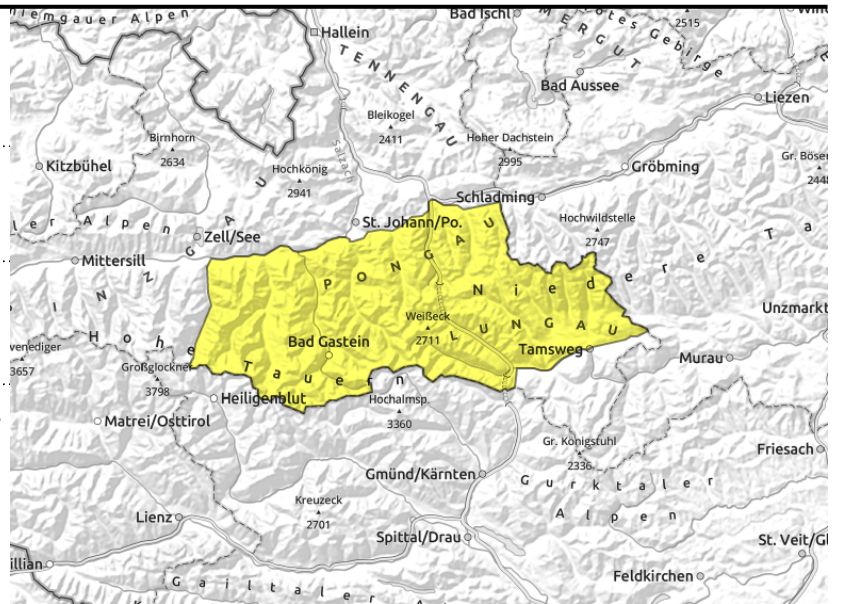
**Niedere Tauern Alpenhauptkamm, Goldberggruppe
Alpenhauptkamm, Goldberggruppe Nord, Niedere
Tauern Nord, Ankogelgruppe, Muhr, Niedere Tauern
Süd**



lots of fresh snow



snowdrifts above 2500 m, near
ridgelines



Danger zones are difficult to recognize

Avalanche danger is MODERATE. The variable winds in recent days have loaded N/SE slopes with drifts. A medium slab avalanche can be triggered even by minimum additional loading. Avalanche prone locations occur mostly near ridgelines, also distant from ridgelines in high alpine regions, and in steep gullies and bowls. In high alpine regions, superficial avalanches can fracture down to more deeply embedded layers and grow to large size.

Snowpack structure

The huge amounts of cold fresh snow over the last few days were able to settle in the un-windy and intermittently sunny weather. Clear nocturnal skies have formed surface hoar.

A potential fracture point for slabs occurs at the border between fresh snow and fresh drifts to the colder and often loose snowbase. Also inside the old snowpack there are weakened layers at melt-freeze crusts and depth hoar.

Weather

On Thursday, initial sunshine. Visibility will deteriorate during the daytime from the north. In the Lungau Nockberge, brisk northwesterly winds will arise towards evening. Temperatures will drop noticeably. At 2000 m: -6 degrees, at 3000 m: -10 degrees.

Also on Friday, the peaks will be shrouded in heavy cloud, intermittent snowfall is possible.

Outlook

Little change is expected.

Avalanche problems



New snow



Wind drifted
snow



Persistent
weak layer



Wet snow



Gliding snow



Cornices



no distinct

Danger ratings



1

low



2

moderate



3

considerable



4

high



5

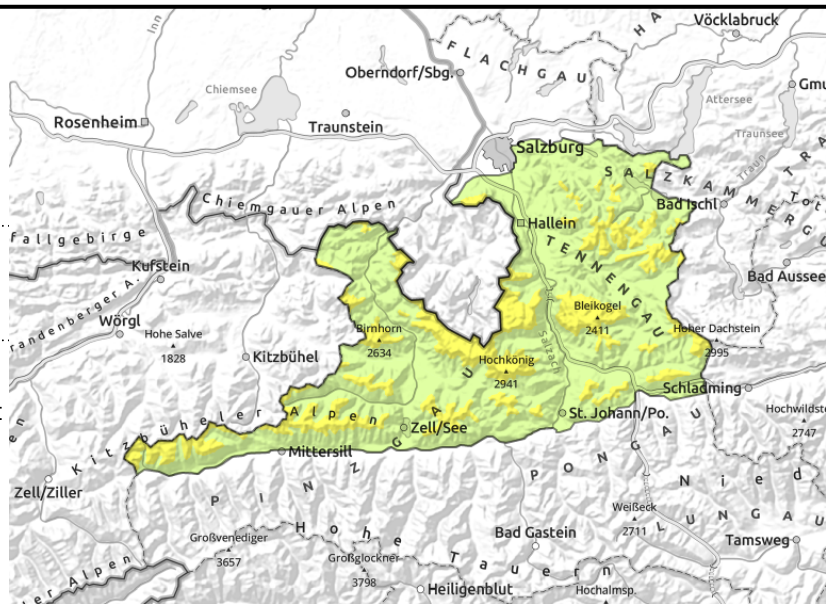
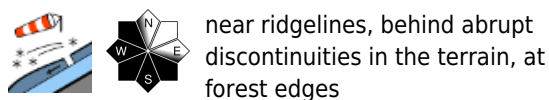
very high

Expositions



Avalanche report for Thursday, 26.01.2023

Kitzbüheler Alpen, Glemmtal, Oberpinzgauer Grasberge, Loferer und Leoganger Steinberge, Tennengebirge, Gosaukamm, Steinernes Meer, Hochkönig, Hagengebirge, Göllstock, Dientner Grasberge, Pongauer Grasberge, Chiemgauer Alpen, Heutal, Reiteralpe, Untersbergstock, Osterhorngruppe, Gamsfeldgruppe



Avoid snowdrift accumulations

Avalanche danger above the timberline is considerable, below that altitude danger is moderate. Snowdrifts can release a medium-sized slab avalanche even by minimum additional loading. Most avalanche prone locations occur on W/S/E facing slopes, both near to and distant from ridgelines and in steep gullies in all aspects.

Snowpack structure

The snowpack has settled after lots of snowfall. Due to nights of clear skies, surface hoar has formed. Where the sun has moistened the snowpack on Wednesday, a thin melt-freeze crust could form. Older snowdrifts are often poorly bonded with the old snowpack. Potential fracture spot for slabs lies in the blanketed loose snow. Apart from that, there are weak layers of melt-freeze crusts and depth hoar inside the old snowpack.

Weather

On Thursday, initial sunshine. Visibility will deteriorate during the daytime from the north. In the Lungau Nockberge, brisk northwesterly winds will arise towards evening. Temperatures will drop noticeably. At 2000 m: -6 degrees.

Also on Friday, the peaks will be shrouded in heavy cloud, intermittent snowfall is possible.

Outlook

Little change is expected.

Translated by Jeffrey McCabe, www.creativtrans.com

Avalanche problems



Danger ratings



Expositions

