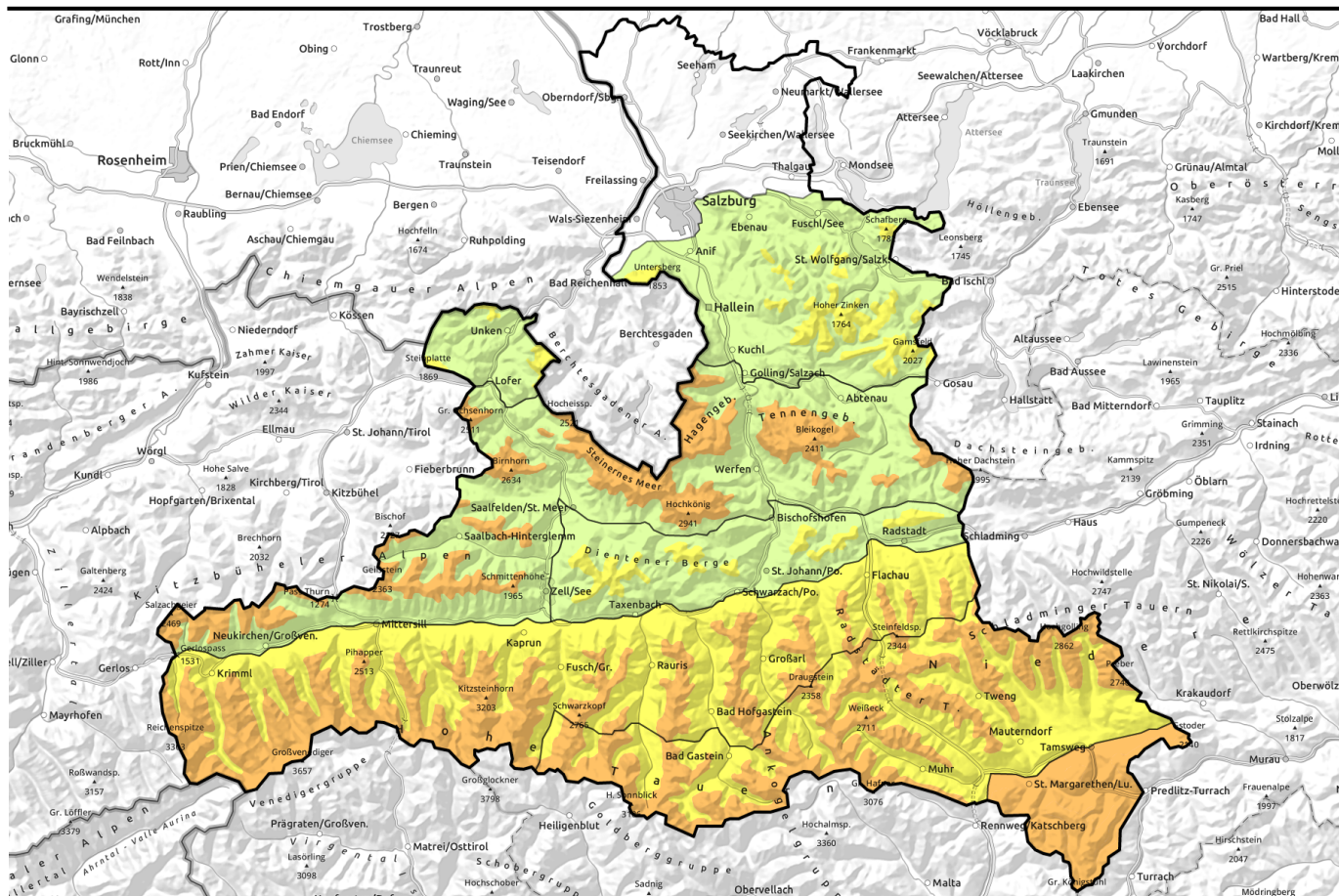


# Avalanche report for Tuesday, 24.01.2023



## Lots of fresh snow in the south, snowdrifts at high altitudes

	Nockberge	
	2000 m Großvenedigergruppe Alpenhauptkamm, Glocknergruppe Alpenhauptkamm, Glocknergruppe Nord, Großvenedigergruppe Nord, Goldberggruppe Nord, Niedere Tauern Nord	
	1300 m Dientner Grasberge, Pongauer Grasberge, Chiemgauer Alpen, Heutal, Reiteralpe, Osterhorngruppe, Gamsfeldgruppe, Untersbergstock	
	1800 m Niedere Tauern Süd, Niedere Tauern Alpenhauptkamm, Ankogelgruppe, Muhr, Goldberggruppe Alpenhauptkamm	
	1800 m Kitzbüheler Alpen, Glemmtal, Oberpinzgauer Grasberge, Loferer und Leoganger Steinberge, Tennengebirge, Gosaukamm, Steinernes Meer, Hochkönig, Hagengebirge, Göllstock	

### Avalanche problems



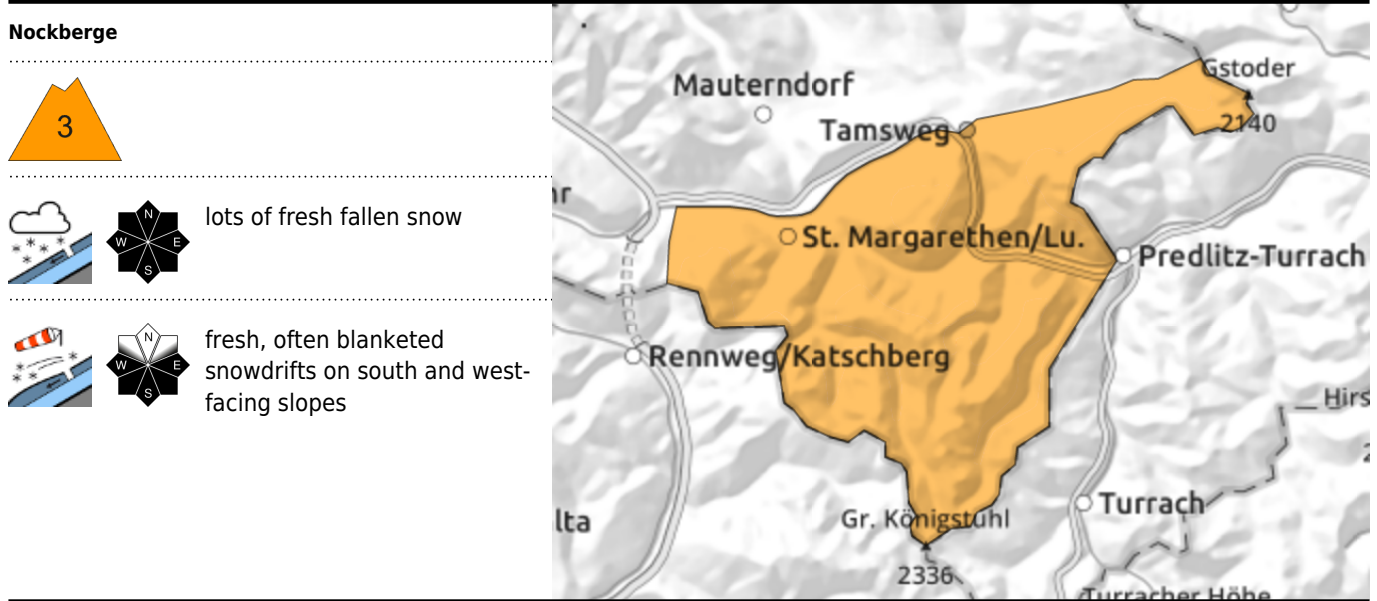
### Danger ratings



### Expositions



# Avalanche report for **Tuesday, 24.01.2023**



## Large amounts of fresh fallen snow, rising temperatures

Avalanche danger is considerable. On very steep slopes, naturally triggered small-to-medium loose-snow and slab avalanches are possible. In addition, fresh drifts can be triggered as a slab avalanche even be minimum additional loading. Most danger zones occur in W/S/E facing terrain, both near to and distant from ridgelines and in steep gullies in all aspects. Avalanche prone locations are often difficult to recognize on-site. Backcountry freeriders and skiers require ample experience to assess these dangers in outlying terrain.

### Snowpack structure

Lots of snowfall starting on Monday afternoon plus strong E/NE winds have generated snowdrift accumulations, deposited them on south and west-facing slopes. Towards the end of this period of precipitation wind will slacken off and the signals/signs of wind will be blanketed on Tuesday. Fresh snow (20-40 cm) can be expected. Gullies and leeward bowls are filled to the brim with drifts. Bonding between fresh snow (fell at mild temperature) to cold snow beneath it is poor.

### Weather

On Monday evening and during Monday night, persistent heavy snowfall amid rising temperatures. On Tuesday, poor visibility, still a bit of light snowfall. Rain below 1300 m. At 2000 m, -3 degrees. Winds will be light, moderate at high altitudes, from the NE.

### Outlook

On Wednesday, sunny, light wind, mild temperatures. But the beautiful weather should not deceive: avalanche danger is still CONSIDERABLE.

#### Avalanche problems



#### Danger ratings

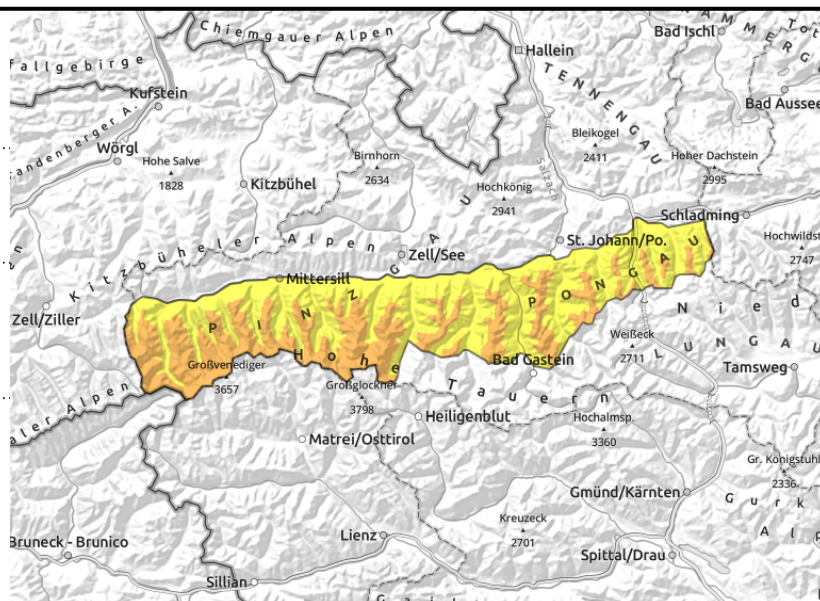
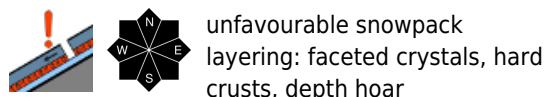
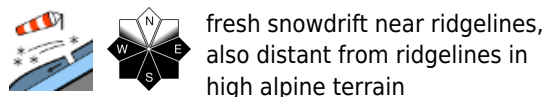


#### Expositions



# Avalanche report for Tuesday, 24.01.2023

**Großvenedigergruppe Alpenhauptkamm, Glocknergruppe Alpenhauptkamm, Glocknergruppe Nord, Großvenedigergruppe Nord, Goldberggruppe Nord, Niedere Tauern Nord**



## Danger zones: in gullies and on esp. on steep ridgeline slopes

Avalanche danger above 2000 m is CONSIDERABLE, below that altitude danger is MODERATE and heavily dependent on wind impact. A medium slab avalanche can be triggered even by minimum additional loading. Avalanche prone locations occur mostly near ridgelines, especially on W/S/SE facing slopes and in steep gullies and wind-protected bowls. In high alpine regions, superficial avalanches can fracture down to more deeply embedded layers and grow to large size.

### Snowpack structure

The huge amounts of cold fresh snow over the last few days were able to settle in the un-windy and intermittently sunny weather. Strong-to-stormy N/NW winds transported the snow widespread, depositing new snowdrift accumulations in gullies and on wind-protected slopes. The fracture point for slab avalanches lies at the very cold, loose blanketed snow. Then there are also weak layers inside the old snowpack near melt-freeze crusts and the depth hoar in the fundament.

### Weather

On Tuesday, adequate visibility, some sunshine. Temperatures will rise somewhat. At 2000 m: -3 degrees; at 3000 m: -9 degrees. Winds will remain mostly light, moderate NE winds in summit zones.

### Outlook

On Wednesday, sunny, light wind, mild temperatures. But the beautiful weather should not deceive: avalanche danger is still CONSIDERABLE.

#### Avalanche problems



#### Danger ratings



#### Expositions

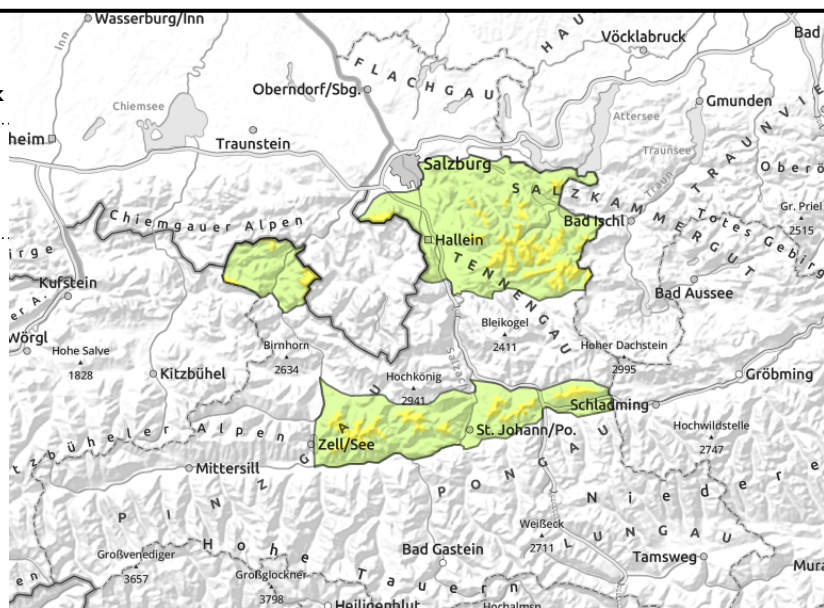


# Avalanche report for Tuesday, 24.01.2023

Dientner Grasberge, Pongauer Grasberge, Chiemgauer Alpen, Heutal, Reiteralpe, Osterhorngruppe, Gamsfeldgruppe, Untersbergstock



near ridgelines, behind abrupt discontinuities in the terrain, in gullies and steep bowls



## Heed wind signals. Loose powder where there is no wind.

Avalanche danger above 1300 m is MODERATE, below that altitude danger is LOW. Danger zones for slab avalanches occur near ridgelines, increasingly on E/S/SW facing slopes and in steep gullies and wind-protected bowls. A small-to-medium slab avalanche can be triggered even by minimum additional loading.

### Snowpack structure

The huge amounts of cold fresh snow over the last few days were able to settle on Sunday in the un-windy and intermittently sunny weather. Previously, on Saturday at high altitudes, strong-to-stormy NW winds transported the snow widespread, depositing new snowdrift accumulations in gullies and on wind-protected slopes. The fracture point for slab avalanches lies at the very cold, loose blanketed snow. Then there are also weak layers inside the old snowpack near melt-freeze crusts and the depth hoar in the fundament.

### Weather

On Tuesday, adequate visibility, some sunshine. Temperatures will rise somewhat. At 2000 m: -3 degrees; at 3000 m: -9 degrees. Winds will remain mostly light.

### Outlook

On Wednesday, sunny, light wind, mild temperatures. Mostly favourable conditions, giving due consideration to the local danger zones.

#### Avalanche problems



#### Danger ratings





#### Expositions





# Avalanche report for Tuesday, 24.01.2023

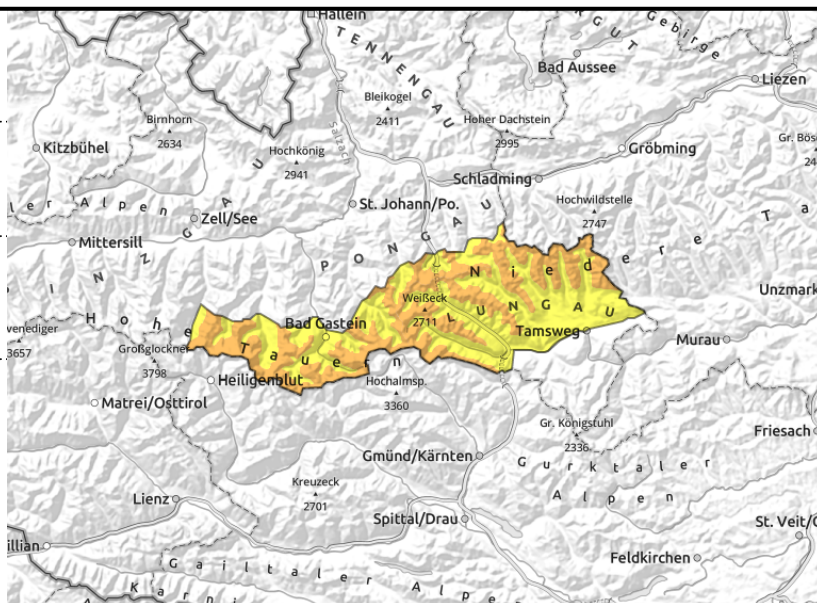
**Niedere Tauern Süd, Niedere Tauern  
Alpenhauptkamm, Ankogelgruppe, Muhr,  
Goldberggruppe Alpenhauptkamm**

fresh snow atop unfavourably layered snowpack

wide-ranging snowdrifts in high alpine regions above 2500 m



## Fresh snowfall amid wind impact

Avalanche danger above 1800m is CONSIDERABLE, below that altitude danger is MODERATE. A slab of medium size can be easily triggered. Danger zones are generally on W/SE facing slopes, both near ridgelines and distant from them. In high alpine terrain, superficial avalanches can fracture down to more deeply embedded layers in the snowpack and attain larger size. Due to solar radiation, the most recent bout of fresh snow can trigger a loose-snow avalanche naturally in extremely steep rocky terrain.

## Snowpack structure

Monday brought 15-30 cm of fresh snow from the south amid rising temperatures. Above 2500 m, strong-to-stormy NE/SE winds transported the snow. The base for fresh snow and drifts is the cold, somewhat settled snowfall from last week. Older drifts from Saturday still exist on south-facing slopes and in gullies. Fracture points for slabs: the borderline between fresh snow and snowdrifts to the cold and often loose base beneath them. Apart from that, inside the old snowpack are weak layers bordering on melt-freeze crusts and depth hoar in the fundament.

## Weather

On Tuesday adequate visibility, some sunshine. Temperatures will rise somewhat. At 2000 m. -3 degrees; at 3000 m: -9 degrees. Winds will remain mostly light.

## Outlook

On Wednesday, sunny, light wind, mild temperatures. But the beautiful weather should not deceive: avalanche danger is still CONSIDERABLE.

### Avalanche problems



### Danger ratings

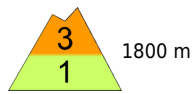


### Expositions

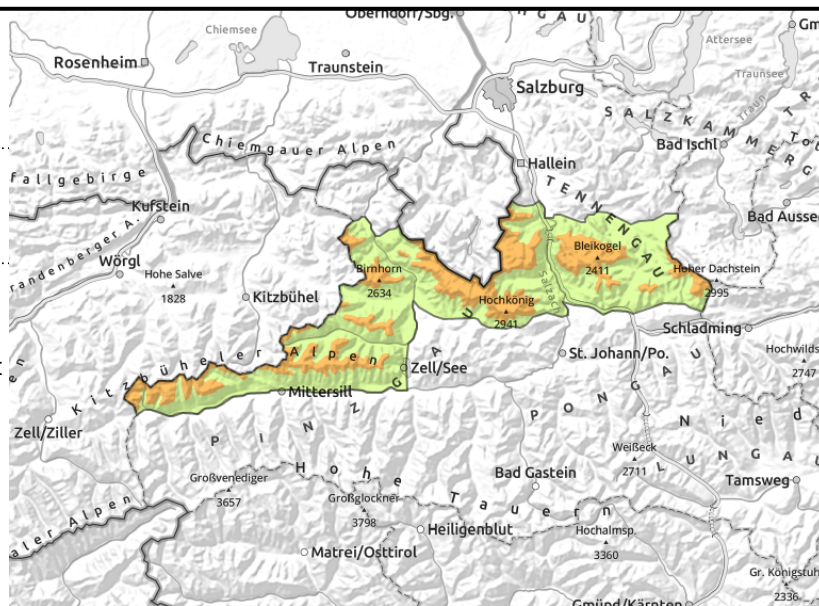


# Avalanche report for Tuesday, 24.01.2023

**Kitzbüheler Alpen, Glemmtal, Oberpinzgauer Grasberge, Loferer und Leoganger Steinberge, Tennengebirge, Gosaukamm, Steinernes Meer, Hochkönig, Hagengebirge, Göllstock**



near to and distant from ridgelines, behind abrupt discontinuities in the terrain, at forest edges



## AVOID wind-loaded areas above the timberline

Avalanche danger above 1800 m is CONSIDERABLE, below that altitude danger is LOW, and directly a function of wind impact. A medium-sized slab can be triggered even by minimum additional loading in steep terrain. Danger zones occur near to ridgelines, in high alpine regions also behind abrupt discontinuities in the terrain, increasingly on W/S/SE facing slopes and in steep gullies and bowls.

## Snowpack structure

The huge amounts of cold fresh snow over the last few days were able to settle on Sunday in the un-windy and intermittently sunny weather. Previously, on Saturday at high altitudes, strong-to-stormy NW winds transported the snow widespread, depositing new snowdrift accumulations in gullies and on wind-protected slopes. The fracture point for slab avalanches lies at the very cold, loose blanketed snow. Then there are also weak layers inside the old snowpack near melt-freeze crusts and the depth hoar in the fundament.

## Weather

On Tuesday, adequate visibility, some sunshine. Temperatures will rise somewhat. At 2000 m: -3 degrees; at 3000 m: -9 degrees. Winds will remain mostly light.

## Outlook

On Wednesday, sunny, light wind, mild temperatures. Mostly favourable conditions, giving due consideration to the local danger zones.

Translated by Jeffrey McCabe, [www.creativtrans.com](http://www.creativtrans.com)

### Avalanche problems



### Danger ratings



### Expositions

