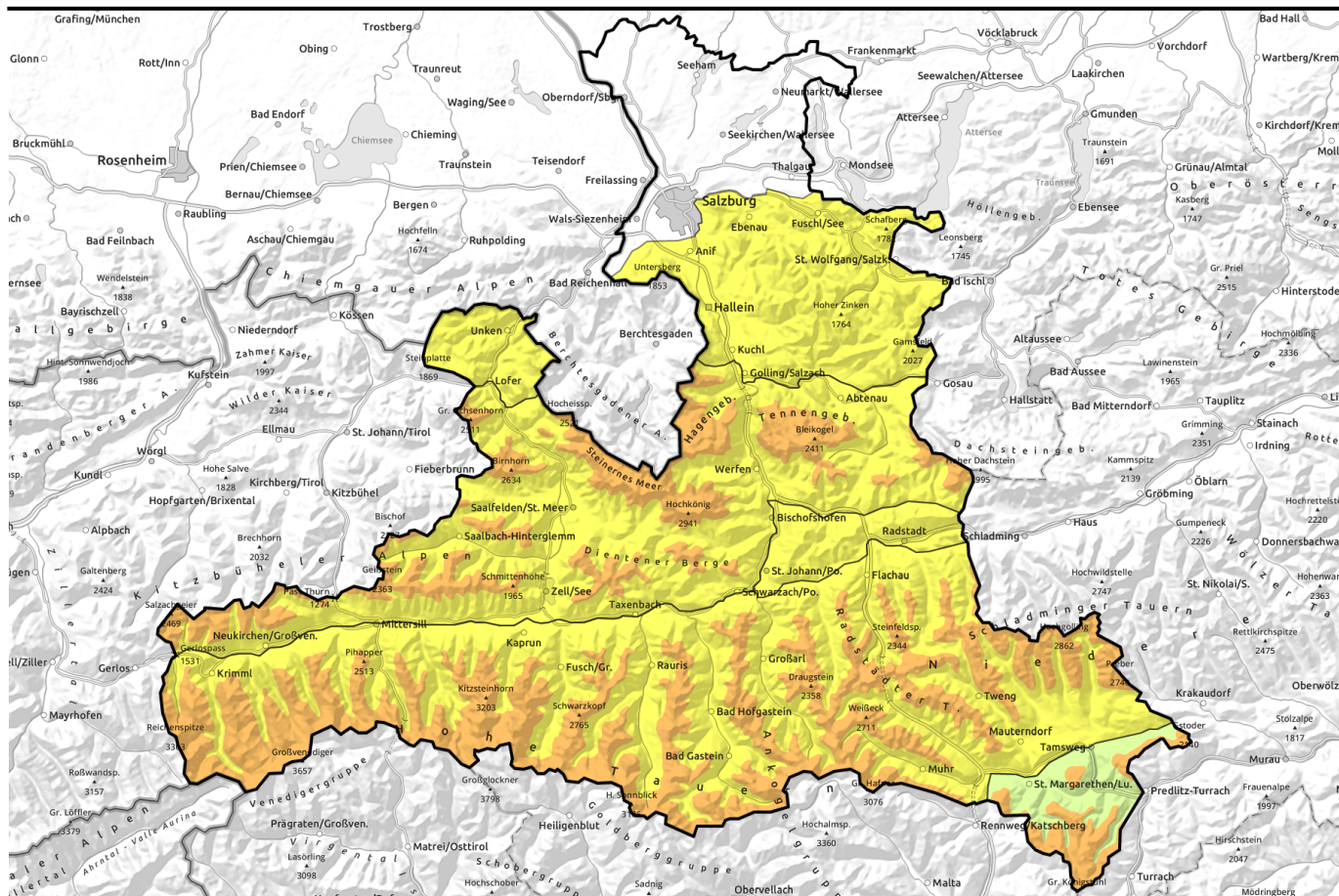


Avalanche report for Sunday, 22.01.2023



Easily triggered snowdrifts at high altitudes

	Osterhorngruppe, Gamsfeldgruppe, Chiemgauer Alpen, Heutal, Reiteralpe, Pongauer Grasberge, Untersbergstock	
	1600 m Nockberge	
	1800 m Großenedigergruppe Alpenhauptkamm, Glocknergruppe Alpenhauptkamm, Goldberggruppe Alpenhauptkamm, Glocknergruppe Nord, Großenedigergruppe Nord, Goldberggruppe Nord, Niedere Tauern Nord, Niedere Tauern Alpenhauptkamm, Ankogelgruppe, Muhr, Niedere Tauern Süd	
	2000 m Loferer und Leoganger Steinberge, Steinernes Meer, Hochkönig, Hagengebirge, Göllstock, Tennengebirge, Gosaukamm, Dientner Grasberge, Kitzbüheler Alpen, Glemmtal, Oberpinzgauer Grasberge	

Avalanche problems



Danger ratings



Expositions



Avalanche report for Sunday, 22.01.2023

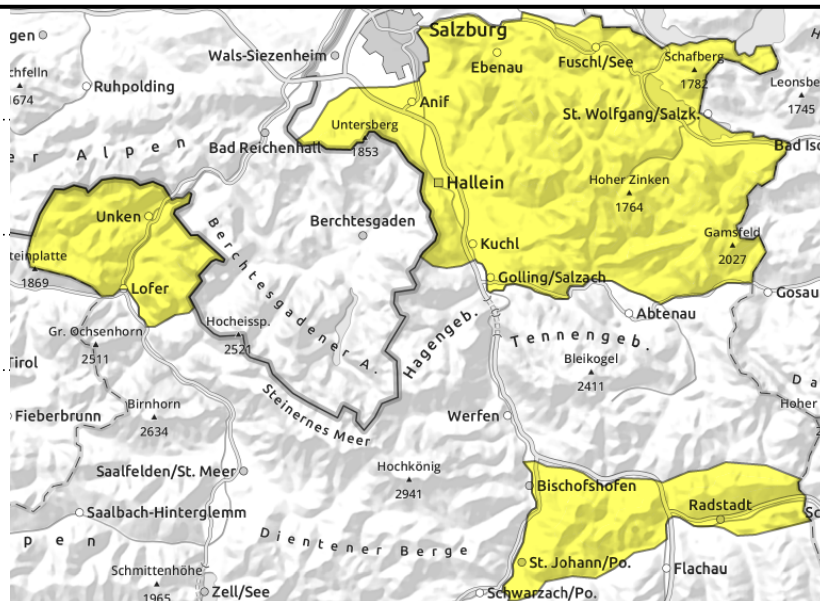
Osterhorngruppe, Gamsfeldgruppe, Chiemgauer Alpen, Heutal, Reiteralpe, Pongauer Grasberge, Untersbergstock



loose-snow avalanches in very steep terrain, cold and very loose



thin, small snowdrift masses, near ridgelines



Cold powder snow, often without wind impact

Avalanche danger is MODERATE. Artificially or naturally triggered (mostly small) avalanches in very-to-extremely steep terrain are possible. Only few danger zones in steep ridgeline terrain on E/S facing slopes and in steep gullies where minimum additional loading can release a small slab avalanche.

Snowpack structure

Cold and very loose fresh snow lies deposited atop a shallow, superficially loose old snowpack surface. Low proneness to triggering, only in very exposed zones above the treeline where NW winds have had an impact., are fractures inside the fresh fallen snow possible.

Weather

On Sunday, adequate visibility, sunshine only in the background. Some higher summits could be wreathed in fog. Snowfall - hardly any. Winds will be light, moderate at high altitudes, from the northwest. At 1500 m: -9 degrees; at 2000 m: -13 degrees; at 3000 m: -17 degrees.

Outlook

As a result of intensifying winds and slight rise in temperature, increasing snowdrift problem in exposed terrain.

Avalanche problems



Danger ratings



Expositions



Avalanche report for **Sunday, 22.01.2023**

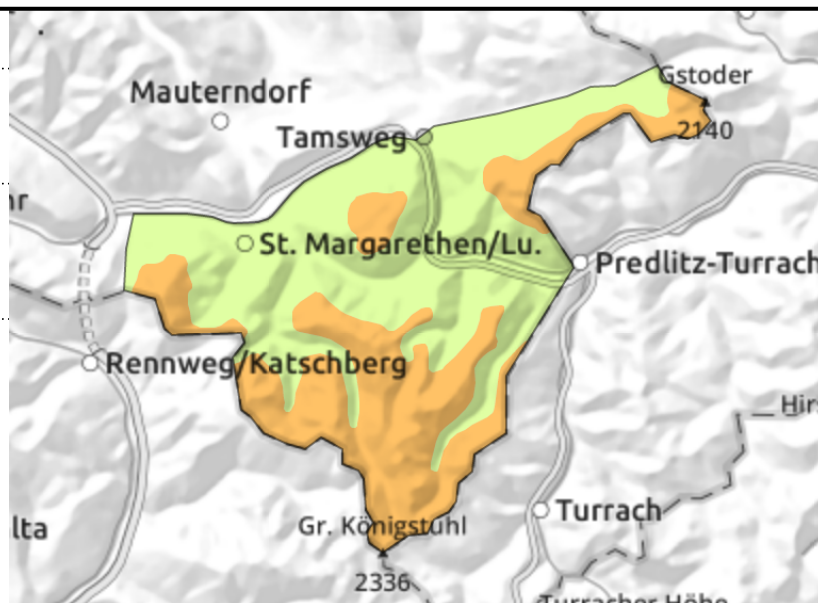
Nockberge



near to and distant from ridgelines, wide-ranging snowdrifts



triggerable in transitions from shallow to deep snow



Heed wind impact. Avoid snowdrift accumulations.

Avalanche danger rises in accord with wind influence and with ascending altitude: as of 1600 m danger is CONSIDERABLE. Fresh snowdrifts can trigger a slab avalanche of small-to-medium size even with minimum additional loading. Released avalanches can fracture down to more deeply embedded layers inside the snowpack. Most danger zones are in E/S facing terrain, near ridgelines and distant from ridgelines and in steep gullies in all aspects.

Snowpack structure

Stormy NW/NE winds have transported the fresh snow intensively. Exposed zones are utterly windblown, gullies and bowls are filled to the brim with drifts. Bonding of cold, brittle drifts to the blanketed fresh snow or old snowpack is generally poor. Also the old snowpack itself is unfavourably layered, i.e. beneath melt-freeze crusts are large, soft, faceted crystals, also depth hoar.

Weather

On Sunday, adequate visibility, sunshine only in the background. Some higher summits could be wreathed in fog. Snowfall - hardly any. Winds will be light, moderate at high altitudes, from the northwest. At 1500 m: -9 degrees; at 2000 m: -13 degrees; at 3000 m: -17 degrees.

Outlook

Poor visibility and snowfall on Monday, amid cold northerly wind. Heed snowdrifts!

Avalanche problems



Danger ratings

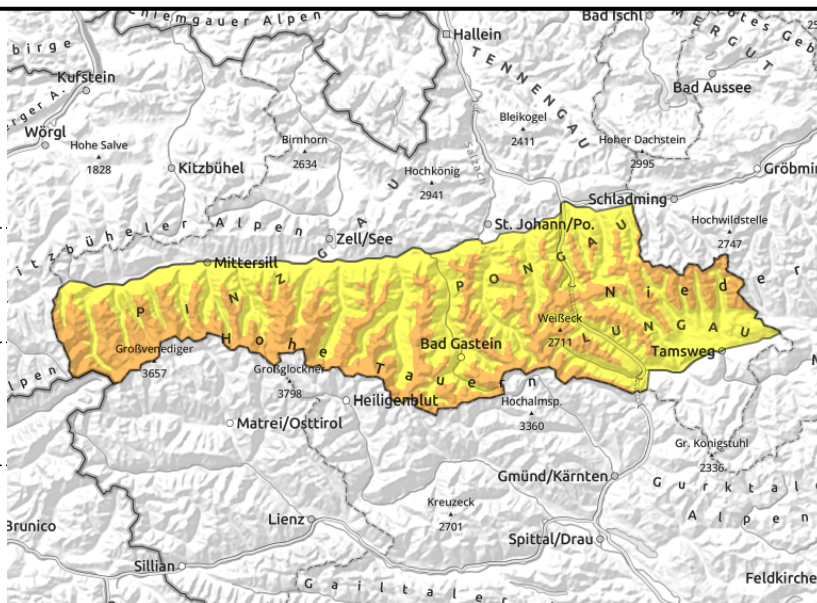



Expositions




Avalanche report for Sunday, 22.01.2023

Großvenedigergruppe Alpenhauptkamm, Glocknergruppe Alpenhauptkamm, Goldberggruppe Alpenhauptkamm, Glocknergruppe Nord, Großvenedigergruppe Nord, Goldberggruppe Nord, Niedere Tauern Nord, Niedere Tauern Alpenhauptkamm, Ankogelgruppe, Muhr, Niedere Tauern Süd



 fresh and older snowdrifts, also distant from ridgelines

 unfavourable snowpack: faceted crystals, hardened crusts, embedded hoar

Trigger-sensitive snowdrift accumulations due to NW winds

Avalanche danger is rising swiftly in relation to wind impact: as of 1800 m danger is CONSIDERABLE, below that altitude danger is MODERATE and directly dependent on the most recent wind impact. The fresh snowdrifts can trigger as a slab avalanche of small-to-medium size. Releases can fracture down to more deeply embedded layers inside the snowpack. Due to unfavourable snowpack layering, superficial avalanche releases can fracture down to more deeply embedded layers and grow to dangerously large size, particularly in high alpine regions.

Snowpack structure

Atop a snowpack surface showing marked effects of wind (gullies and bowls are filled to the brim, ridges are utterly windblown) cold snow or fresh snowdrifts lie deposited. Bonding is poor. Also the old snowpack is unfavourably layered (ground-level layers metamorphosed, atop of which are melt-freeze crusts/icy sheets and just beneath the surface hoar is embedded) lies a layer of powder which has not been wind-impacted.

Weather

On Sunday, adequate visibility, sunshine only in the background. Some higher summits could be wreathed in fog. Snowfall - hardly any. Winds will be light, moderate at high altitudes, from the northwest. At 1500 m: -9 degrees; at 2000 m: -13 degrees; at 3000 m: -17 degrees.

Outlook

Poor visibility and snowfall on Monday, amid cold northerly wind. Heed snowdrifts!

Avalanche problems



Danger ratings

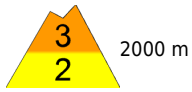
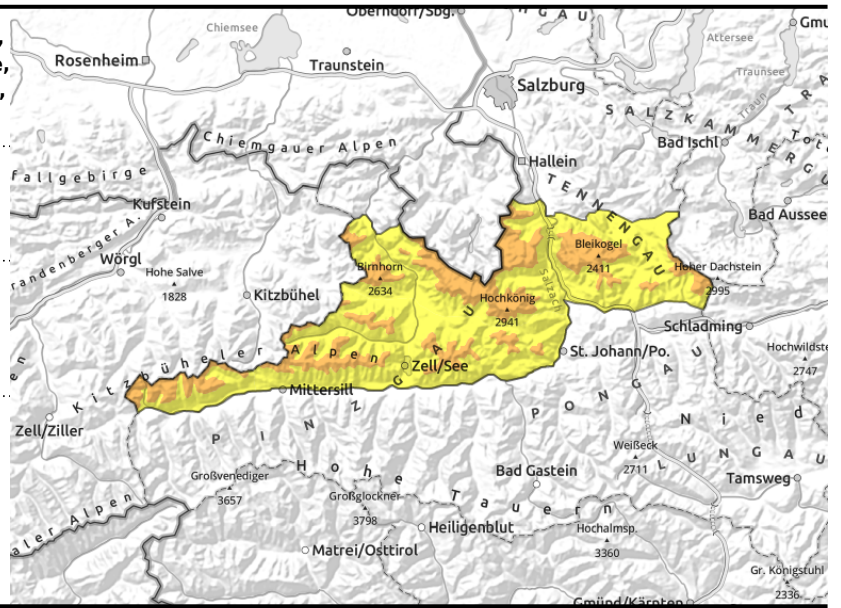


Expositions



Avalanche report for Sunday, 22.01.2023

Loferer und Leoganger Steinberge, Steinernes Meer, Hochkönig, Hagengebirge, Göllstock, Tennengebirge, Gosaukamm, Dientner Grasberge, Kitzbüheler Alpen, Glemmtal, Oberpinzgauer Grasberge



near ridgelines, behind abrupt discontinuities in the terrain, in gullies, steep bowls

cold, very loose

Heed signs of wind. Loose powder snow where there is not wind impact.

Avalanche danger above 2000 m is CONSIDERABLE, below that altitude danger is MODERATE. Danger zones for slab avalanches occur especially near ridgelines, also distant from ridgelines in high alpine regions, particularly on E/S facing slopes and in steep gullies and leeward bowls. A slab of medium size can be triggered in steep terrain even by minimum additional loading.

Snowpack structure

Atop a snowpack surface showing marked effects of wind (gullies and bowls are filled to the brim, ridges are utterly windblown) cold snow or fresh snowdrifts lie deposited. Bonding is poor. Also the old snowpack is unfavourably layered (ground-level layers metamorphosed, atop of which are melt-freeze crusts/icy sheets and just beneath the surface hoar is embedded) lies a layer of powder which has not been wind-impacted.

Weather

On Sunday, adequate visibility, sunshine only in the background. Some higher summits could be wreathed in fog. Snowfall - hardly any. Winds will be light, moderate at high altitudes, from the northwest. At 1500 m: -9 degrees; at 2000 m: -13 degrees; at 3000 m: -17 degrees.

Outlook

As a result of intensifying winds and slight rise in temperature, increasing snowdrift problem in exposed terrain.

Translated by Jeffrey McCabe, www.creativtrans.com

Avalanche problems



Danger ratings



Expositions

