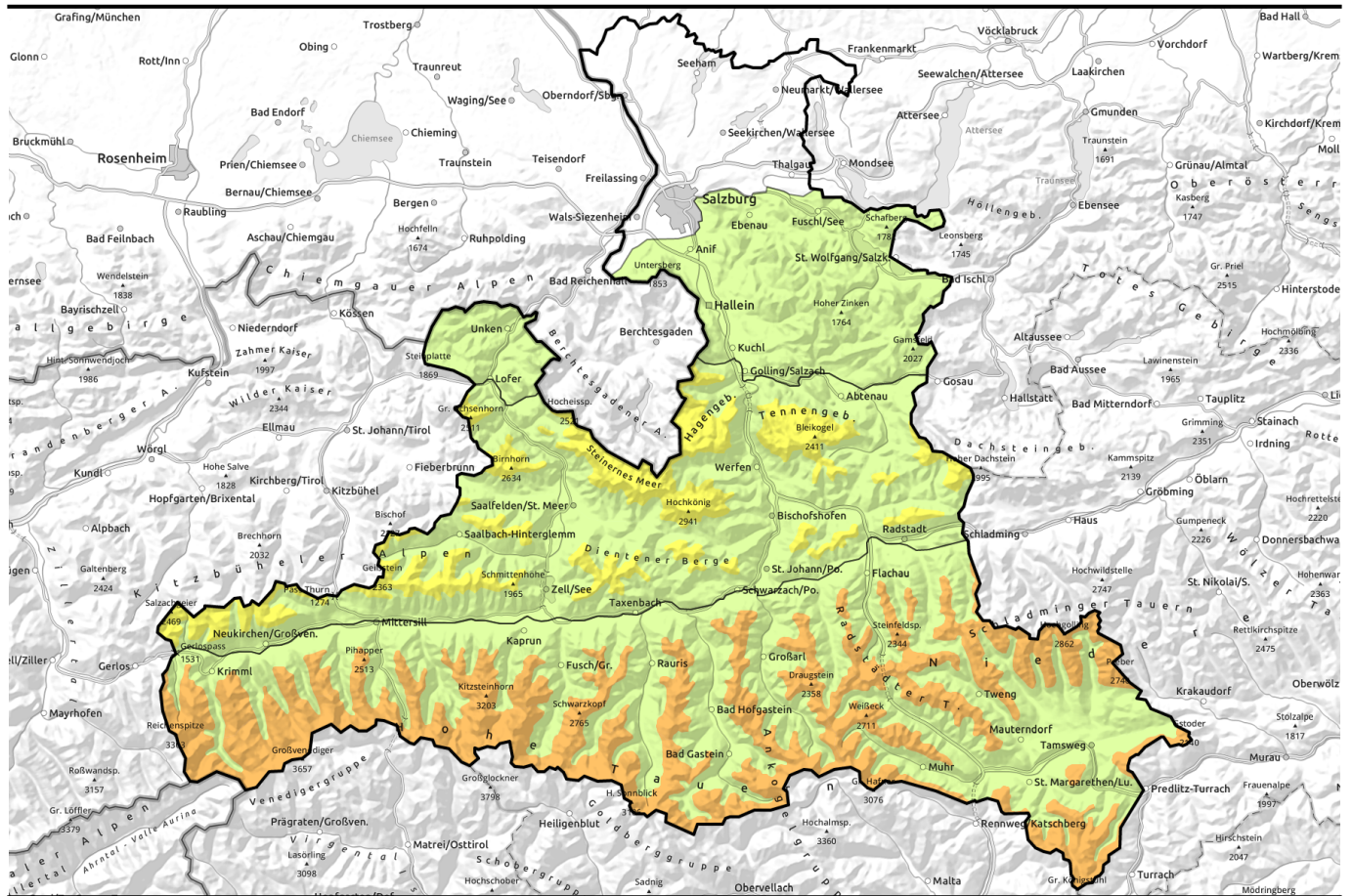

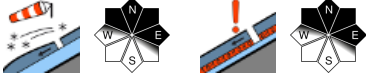



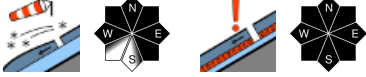


Avalanche report for Wednesday, 18.01.2023



Some fresh snow deposited atop a foehn-wind lashed snowpack

- 
1800 m
 Oberpinzgauer Grasberge, Kitzbüheler Alpen, Glemmtal, Loferer und Leoganger Steinberge, Steinernes Meer, Hochkönig, Hagengebirge, Göllstock, Dientner Grasberge, Pongauer Grasberge, Tennengebirge, Gosaukamm

- 

 Osterhorngruppe, Gamsfeldgruppe, Untersbergstock, Chiemgauer Alpen, Heutal, Reiteralpe

- 
1800 m
 Großvenedigergruppe Alpenhauptkamm, Glocknergruppe Alpenhauptkamm, Goldberggruppe Alpenhauptkamm, Niedere Tauern Alpenhauptkamm, Nockberge, Niedere Tauern Süd, Ankogelgruppe, Muhr, Niedere Tauern Nord, Goldberggruppe Nord, Glocknergruppe Nord, Großvenedigergruppe Nord


Avalanche problems



Danger ratings

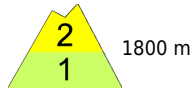



Expositions




Avalanche report for **Wednesday, 18.01.2023**

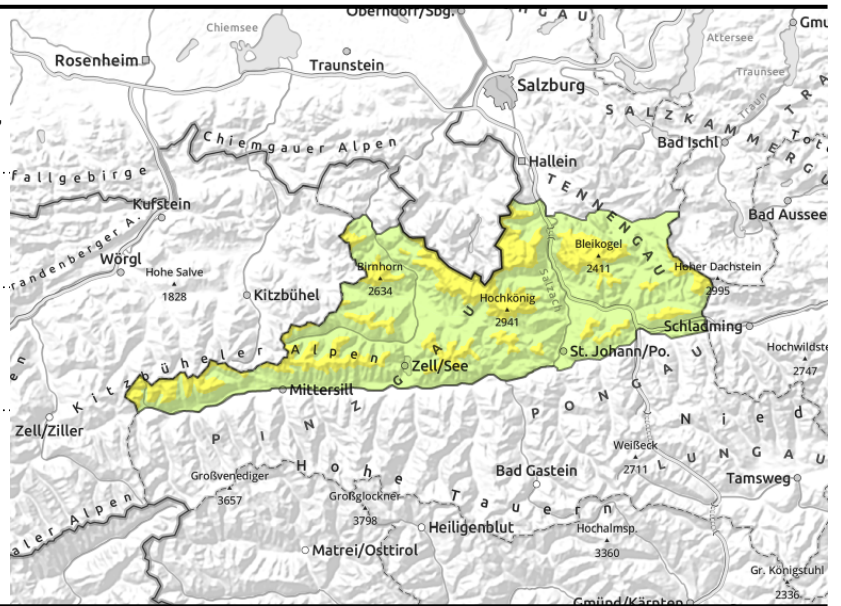
Oberpinzgauer Grasberge, Kitzbüheler Alpen, Glemmtal, Loferer und Leoganger Steinberge, Steinernes Meer, Hochkönig, Hagengebirge, Göllstock, Dientner Grasberge, Pongauer Grasberge, Tennengebirge, Gosaukamm

blanketed snowdrifts, also distant from ridgelines



unfavourable snowpack: faceted crystals, hardened crusts, embedded hoar



Blanketed danger zones

Avalanche danger above 1800 m is MODERATE, below that altitude danger is LOW.

Freshly generated snowdrift accumulations are found near ridgelines, in foehn lanes also distant from ridgeline on north-facing slopes. They can grow to medium size and are prone to triggering, mostly by large additional loading. Danger zones are difficult to recognize (often blanketed by fresh snow). Most avalanche prone locations are found on north and east facing slopes. Special caution is urged at entries into gullies and bowls and in transitions from shallow to deep snow. Slabs can fracture both in transitions to fresh snow/snowdrifts as well as in the old snowpack.

Snowpack structure

On a snowpack showing heavy impact from foehn wind from the beginning of the week, a few cm of fresh snow has been deposited. Exposed terrain is utterly windblown, Gullies and bowls are filled to the brim with drifts. The old snowpack has both in embedded layers and at ground level become expansively metamorphosed, atop of which are melt-freeze crusts and, just below the surface, embedded hoar.

Weather

On Tuesday night, an additional 5-10 cm of fresh snow is expected.

On Wednesday the snow showers will taper off, visibility will improve, a bit of sunshine is expected. Towards evening the snow showers will become more frequent. Winds will be mostly light. At 2000 m: -8 degrees; at 3000 m: -15 degrees.

On Thursday, reduced visibility due to fog, bright intervals will be seldom. Intermittent light snowfall. Winds will be moderate to strong from west to north. At 2000 m: -11 degrees; at 3000 m: -17 degrees.

Outlook

Little change is expected.

Avalanche problems



Danger ratings

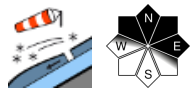


Expositions

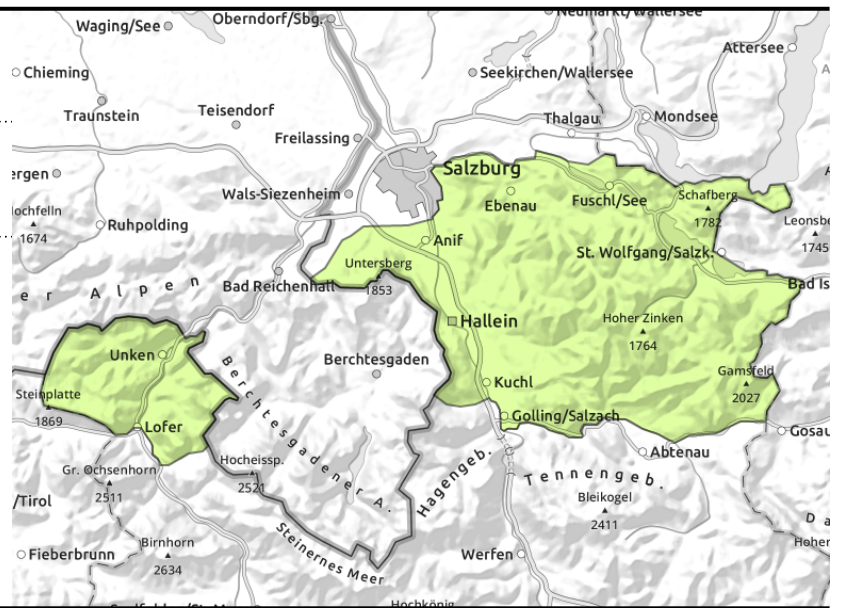


Avalanche report for **Wednesday, 18.01.2023**

**Osterhorngruppe, Gamsfeldgruppe,
Untersbergstock, Chiemgauer Alpen, Heutal,
Reiteralpe**



small snowdrifts



Low avalanche danger

Avalanche danger is low. The fresh snowdrift masses are too small and the snowpack too shallow for burying someone in snow. Heed the risks of taking a fall.

Snowpack structure

A bit of fresh snow and snowdrifts lie deposited atop a shallow old snowpack. The snow often fell on bare ground.

Weather

On Tuesday night, an additional 5 cm of fresh snow is expected. On Wednesday the snow showers will taper off, visibility will improve, a bit of sunshine is expected. Towards evening the snow showers will become more frequent. Winds will be mostly light. At 2000 m: -8 degrees; at 3000 m: -15 degrees. On Thursday, reduced visibility due to fog, bright intervals will be seldom. Intermittent light snowfall. Winds will be moderate to strong from west to north. At 2000 m: -11 degrees; at 3000 m: -17 degrees.

Outlook

Slow increase in avalanche danger.

Avalanche problems



Danger ratings

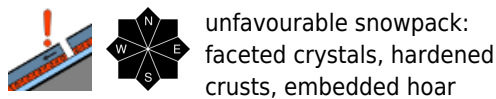
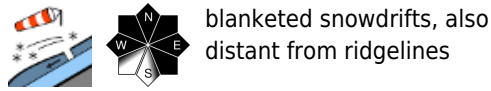
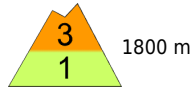
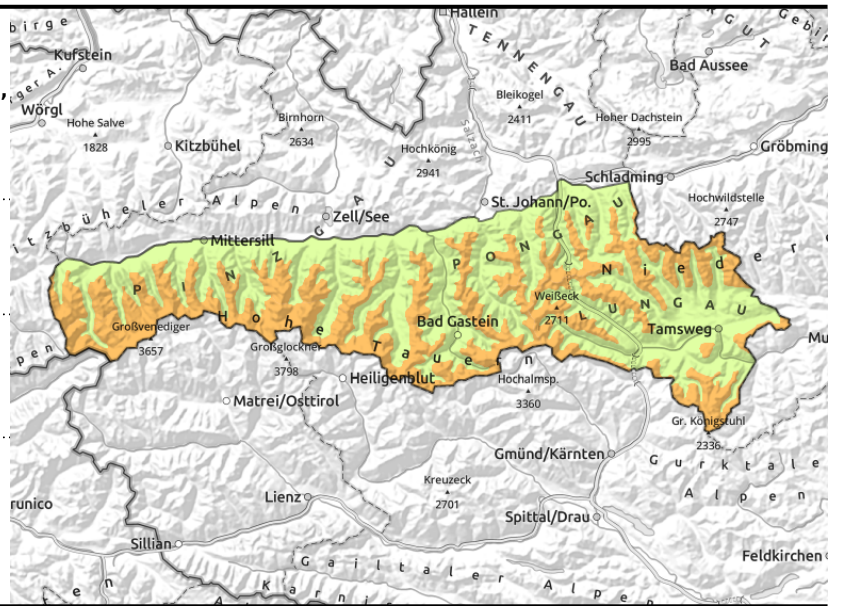


Expositions



Avalanche report for **Wednesday, 18.01.2023**

Großvenedigergruppe Alpenhauptkamm, Glocknergruppe Alpenhauptkamm, Goldberggruppe Alpenhauptkamm, Niedere Tauern Alpenhauptkamm, Nockberge, Niedere Tauern Süd, Ankogelgruppe, Muhr, Niedere Tauern Nord, Goldberggruppe Nord, Glocknergruppe Nord, Großvenedigergruppe Nord



Blanketed danger zones

Avalanche danger above 1800 m is **CONSIDERABLE**, below that altitude danger is **LOW**. Freshly generated snowdrift accumulations are found near ridgelines, in foehn lanes also distant from ridgeline on north-facing slopes. They can grow to medium size and are prone to triggering, mostly by large additional loading. Danger zones are difficult to recognize (often blanketed by fresh snow). Most avalanche prone locations are found on north and east facing slopes. Special caution is urged at entries into gullies and bowls and in transitions from shallow to deep snow. Slabs can fracture both in transitions to fresh snow/snowdrifts as well as in the old snowpack. Thus, the situation is treacherous, despite the small amount of snow...or because of it.

Snowpack structure

On a snowpack showing heavy impact from foehn wind from the beginning of the week, a few cm of fresh snow has been deposited. Exposed terrain is utterly windblown, Gullies and bowls are filled to the brim with drifts. The old snowpack has both in embedded layers and at ground level become expansively metamorphosed, atop of which are melt-freeze crusts and, just below the surface, embedded hoar.

Weather

On Tuesday night, an additional 5-10 cm of fresh snow is expected. On Wednesday the snow showers will taper off, visibility will improve, a bit of sunshine is expected. Towards evening the snow showers will become more frequent. Winds will be mostly light. At 2000 m: -8 degrees; at 3000 m: -15 degrees. On Thursday, reduced visibility due to fog, bright intervals will be seldom. Intermittent light snowfall. Winds will be moderate to strong from west to north. At 2000 m: -11 degrees; at 3000 m: -17 degrees.

Outlook

Slow decrease in avalanche danger.

Translated by Jeffrey McCabe, www.creativtrans.com

Avalanche problems



Danger ratings



Expositions

