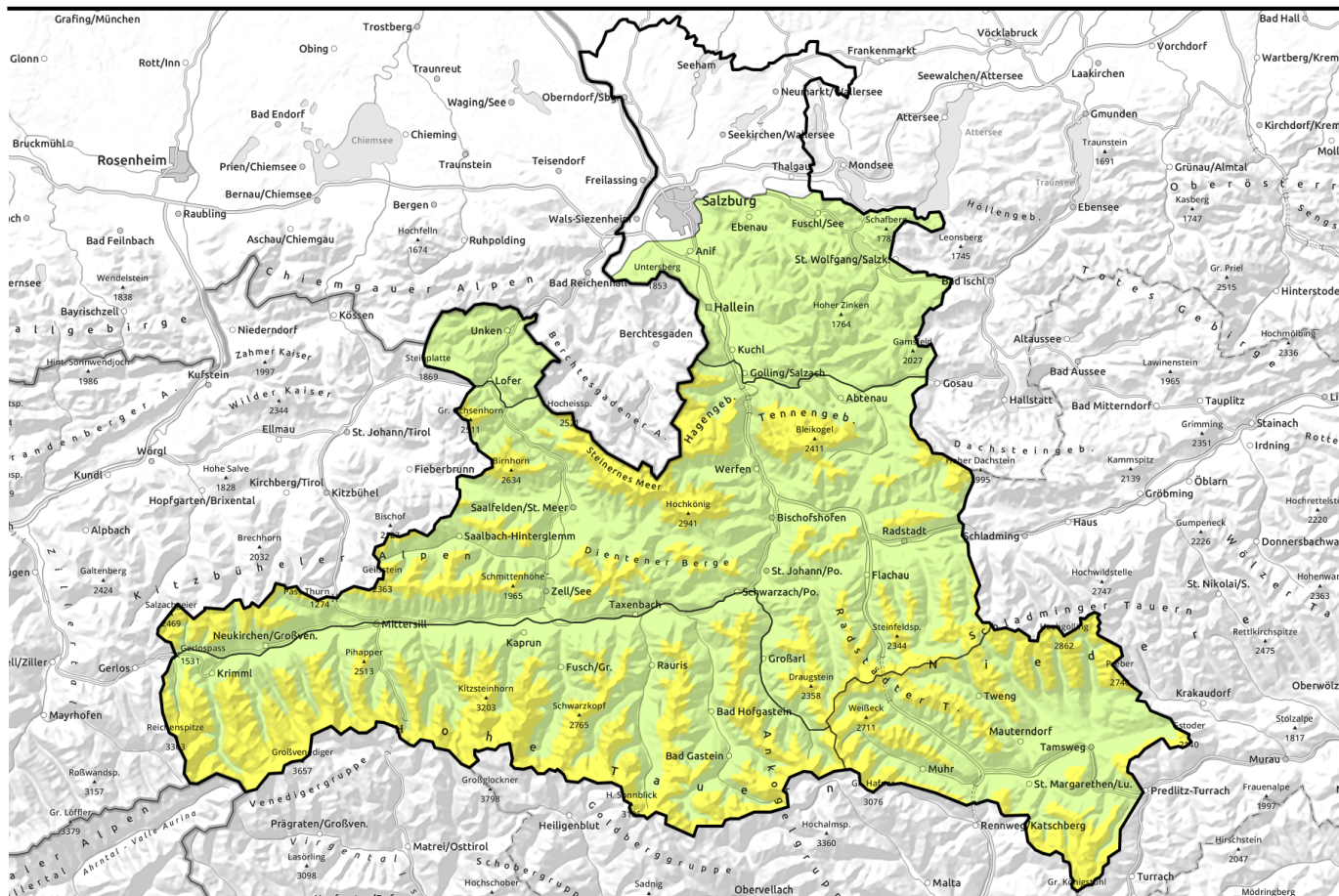


Avalanche report for Sunday, 15.01.2023



Trigger-sensitive snowdrift accumulations

	<p>1700 m Glocknergruppe Nord, Großvenedigergruppe Nord, Goldberggruppe Nord, Großvenedigergruppe Alpenhauptkamm, Glocknergruppe Alpenhauptkamm, Goldberggruppe Alpenhauptkamm</p>	
	<p>2000 m Niedere Tauern Nord, Niedere Tauern Alpenhauptkamm, Loferer und Leoganger Steinberge, Steinernes Meer, Hochkönig, Hagengebirge, Göllstock, Tennengebirge, Gosaukamm, Pongauer Grasberge, Dientner Grasberge, Kitzbüheler Alpen, Glemmtal, Oberpinzgauer Grasberge</p>	
	<p>1 Osterhorngruppe, Gamsfeldgruppe, Untersbergstock, Chiemgauer Alpen, Heutal, Reiteralpe</p>	
	<p>2000 m Nockberge, Ankogelgruppe, Muhr, Niedere Tauern Süd</p>	

Avalanche problems



Danger ratings

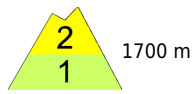




Expositions





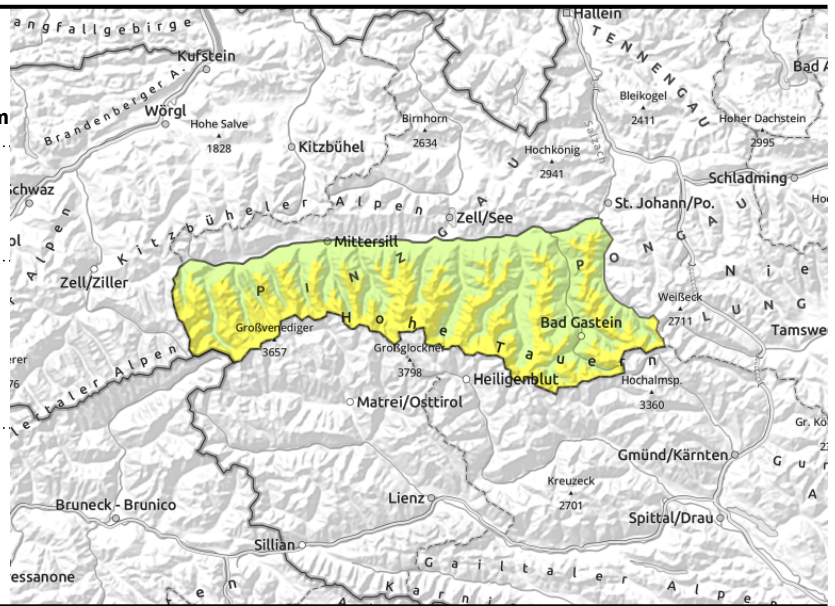
Avalanche report for Sunday, 15.01.2023

Glocknergruppe Nord, Großvenedigergruppe Nord, Goldberggruppe Nord, Großvenedigergruppe Alpenhauptkamm, Glocknergruppe Alpenhauptkamm, Goldberggruppe Alpenhauptkamm



  deeply embedded weak layers can lead to dangerously large avalanches: avoid large steep slopes

  fresh snowdrifts also distant from ridgelines



Weak old snow and fresh snowdrifts

Avalanche danger above 2000 m is MODERATE, below that altitude danger is LOW.

Avalanches can in some places be triggered easily in the weak old snow and grow to medium size, mostly by large additional loading. on shady slopes above 2000 m and on sunny slopes above 2600 m. Special caution is urged in transitions from shallow to deep snow.

Fresh snowdrift accumulations lie deposited on N/E ridgeline slopes, also distant from ridgelines in the foehn-impacted lanes, most are small but trigger-sensitive. As winds slacken off in afternoon, the drifts can get blanketed by fresh snow, making them hard to recognize.

Small loose-snow avalanches are possible on south-facing slopes in the morning.

Snowpack structure

Strong southerly winds have transported the snow far-reachingly. The freshly generated snowdrift accumulations lie deposited atop a snowpack showing pronounced effects of wind which is often riddled with graupel. On shady slopes at high altitudes and in high alpine regions, on sunny slopes above 2600 m, there are expansively metamorphosed (faceted) crystal layers. The snowpack at altitudes is highly irregular.

Weather

Sunday: Clouds will disperse during the morning in Tauern and Nockberge, brisk southerly winds will allow a bit of sunshine. In the afternoon clouds will become denser, shroud the peaks. A cold front will bring intensified westerly to northwesterly winds, temperatures will drop, snow showers bringing all-in-all 10 to 15 cm of fresh snow will set in. At 2000 m: dropping from +4 to -6 degrees; at 3000 m, from -2 to -12 degrees.

Monday: The Tauern will be shrouded in clouds from the south, minor snowfall is possible. In the Northern Alps mostly sunshine over midday, good visibility, clouds will move in during the afternoon. At high altitudes the southerly winds will intensify, reach 80 km/hr in the Tauern. At 2000 m, -6 degrees; at 3000 m: -10 degrees.

Outlook

No initial changes. As fresh snow and winds ensue, avalanche danger levels will increase.

Avalanche problems



Danger ratings



Expositions

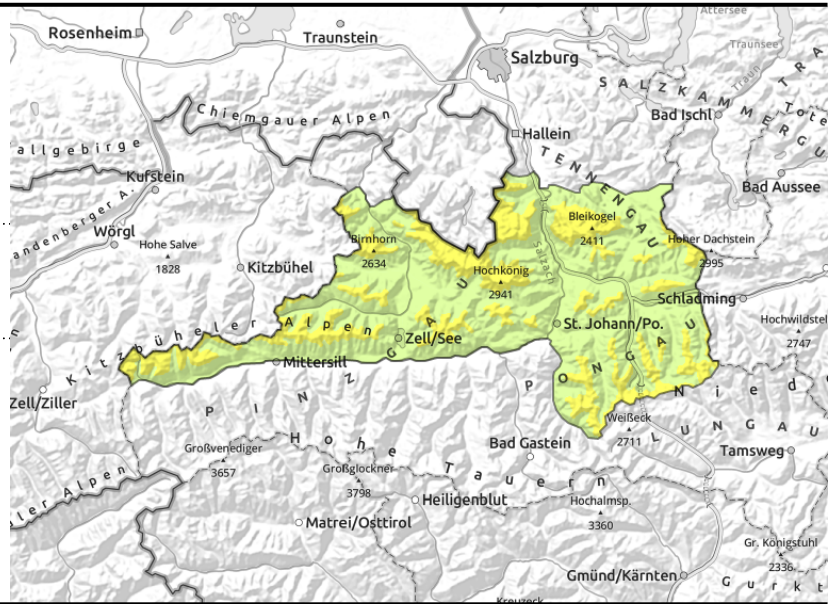


Avalanche report for Sunday, 15.01.2023

Niedere Tauern Nord, Niedere Tauern Alpenhauptkamm, Loferer und Leoganger Steinberge, Steinernes Meer, Hochkönig, Hagengebirge, Göllstock, Tennengebirge, Gosaukamm, Pongauer Grasberge, Dientner Grasberge, Kitzbüheler Alpen, Glemmtal, Oberpinzgauer Grasberge



trigger-sensitive snowdrift masses in ridgeline gullies and bowls, caution at entries



Attention: trigger-sensitive snowdrift masses

Avalanche danger above 2000 m is MODERATE, below that altitude danger is LOW. The fresh snowdrifts can be triggered even by one sole winter sports enthusiast in some places and reach medium size, particularly in the regions where snowfall has been heaviest. The danger zones are located particularly in extended N/E-facing terrain, especially in ridgeline gullies and bowls. Snowdrifts are located on NW/SE facing slopes, particularly in gullies and bowls. As winds slacken off in late afternoon, the drifts can get covered by snow and become difficult to recognize. On steep sunny grass-covered slopes, isolated, mostly small glide-snow avalanches are possible.

Snowpack structure

Fresh snowdrift accumulations (possibly containing graupel) are generally small, lie deposited on steep ridgeline slopes atop soft layers. Older drifts lie atop a weak old snowpack surface at high altitudes, particularly in wind-protected shady gullies and bowls on N/E facing slopes. Snowpack analysis shows blanketed surface hoar. The snowpack at high altitudes is heavily wind-impacted and irregular.

Weather

Sunday: Clouds will disperse during the morning in Tauern and Nockberge, brisk southerly winds will allow a bit of sunshine. In the afternoon clouds will become denser, shroud the peaks. A cold front will bring intensified westerly to northwesterly winds, temperatures will drop, snow showers bringing all-in-all 10 to 15 cm of fresh snow will set in. At 2000 m: dropping from +4 to -6 degrees; at 3000 m, from -2 to -12 degrees.

Monday: The Tauern will be shrouded in clouds from the south, minor snowfall is possible. In the Northern Alps mostly sunshine over midday, good visibility, clouds will move in during the afternoon. At high altitudes the southerly winds will intensify, reach 80 km/hr in the Tauern. At 2000 m, -6 degrees; at 3000 m: -10 degrees.

Outlook

No initial changes. As fresh snow and winds ensue, avalanche danger levels will increase.

Avalanche problems



Danger ratings

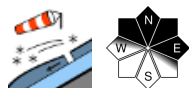


Expositions

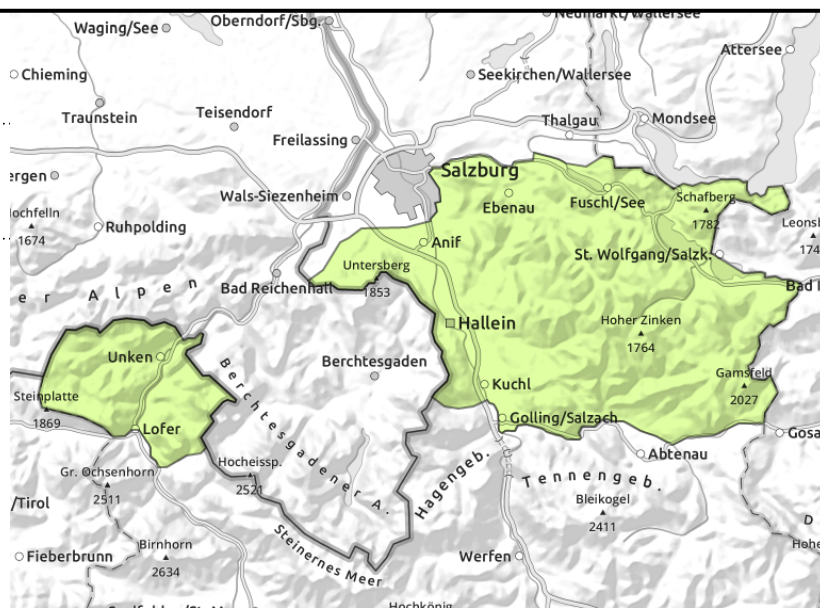


Avalanche report for Sunday, 15.01.2023

Osterhorngruppe, Gamsfeldgruppe, Untersbergstock, Chiemgauer Alpen, Heutal, Reiteralpe



small snowdrift accumulations



Low avalanche danger

Avalanche danger is low. Fresh snowdrift accumulations are too small and the snowpack too shallow to bury people in snow masses. Risks of taking a fall.

Snowpack structure

Atop little snow or bare ground, a bit of fresh snowfall / drifts will be deposited.

Weather

Sunday: Clouds will disperse during the morning in Tauern and Nockberge, brisk southerly winds will allow a bit of sunshine. In the afternoon clouds will become denser, shroud the peaks. A cold front will bring intensified westerly to northwesterly winds, temperatures will drop, snow showers bringing all-in-all 10 to 15 cm of fresh snow will set in. At 2000 m: dropping from +4 to -6 degrees; at 3000 m, from -2 to -12 degrees.

Monday: The Tauern will be shrouded in clouds from the south, minor snowfall is possible. In the Northern Alps mostly sunshine over midday, good visibility, clouds will move in during the afternoon. At high altitudes the southerly winds will intensify, reach 80 km/hr in the Tauern. At 2000 m, -6 degrees.

Outlook

No initial changes. As fresh snow and winds ensue, avalanche danger levels will increase.

Avalanche problems



Danger ratings

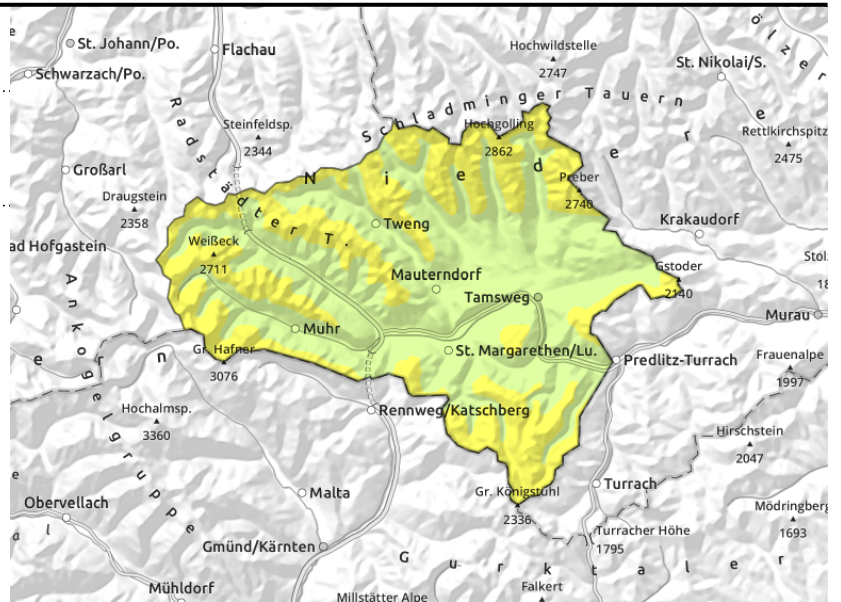
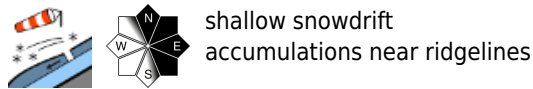


Expositions



Avalanche report for Sunday, 15.01.2023

Nockberge, Ankogelgruppe, Muhr, Niedere Tauern Süd



Heed snowdrift accumulations

MODERATE avalanche danger prevails above 2000 m. Fresh and older snowdrift accumulations can in places be triggered even by one sole winter sports enthusiast. Danger zones increase with ascending altitude, avalanches can in isolated cases attain medium size where snowfall has been heaviest. Snowdrift accumulations occur on N/SE facing slopes, particularly in ridgeline zones, in gullies and in bowls. In the Nockberge, the danger zones occur more seldom and the releases are smaller. On steep sunny grass-covered slopes, isolated small glide-snow avalanches are possible.

Snowpack structure

Small avalanche accumulations lie deposited on north and east-facing slopes, in isolated cases atop a loose old snowpack surface.

Weather

Sunday: Clouds will disperse during the morning in Tauern and Nockberge, brisk southerly winds will allow a bit of sunshine. In the afternoon clouds will become denser, shroud the peaks. A cold front will bring intensified westerly to northwesterly winds, temperatures will drop, snow showers bringing all-in-all 10 to 15 cm of fresh snow will set in. At 2000 m: dropping from +4 to -6 degrees; at 3000 m, from -2 to -12 degrees.

Monday: The Nockberge and Tauern will be shrouded in clouds from the south, minor snowfall is possible. In the Northern Alps mostly sunshine over midday, good visibility, clouds will move in during the afternoon. At high altitudes the southerly winds will intensify, reach 80 km/hr in the Tauern. At 2000 m, -6 degrees; at 3000 m: -10 degrees.

Outlook

As fresh snow and winds ensue, avalanche danger levels will increase.

Translated by Jeffrey McCabe, www.creativtrans.com

Avalanche problems



Danger ratings



Expositions

