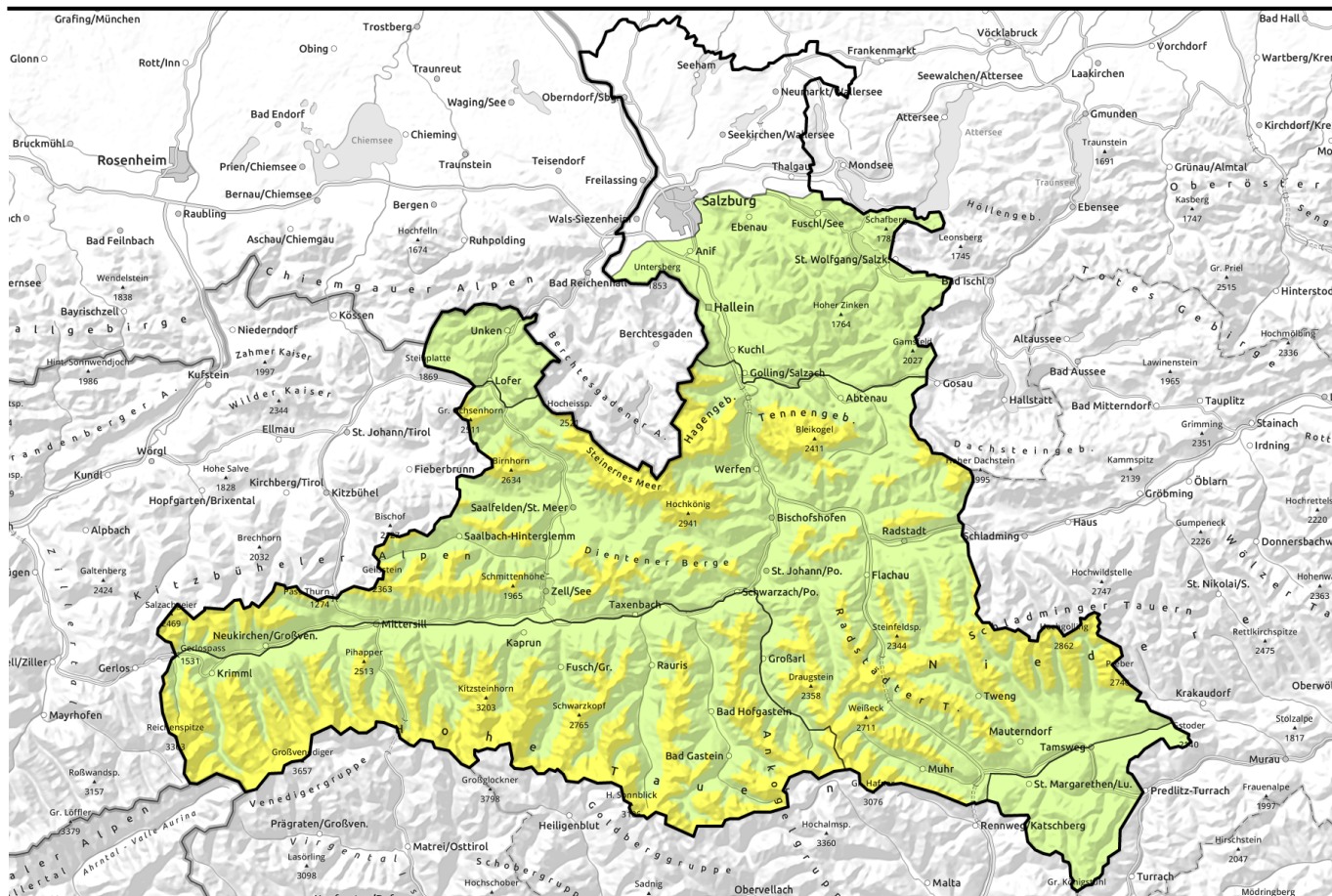


Avalanche report for Saturday, 14.01.2023



Some fresh snowdrifts, weak old snow in Hohe Tauern

	<p>2000 m Großenedigergruppe Alpenhauptkamm, Glocknergruppe Alpenhauptkamm, Glocknergruppe Nord, Großenedigergruppe Nord, Goldberggruppe Alpenhauptkamm, Goldberggruppe Nord</p>	
	<p>2000 m Niedere Tauern Nord, Ankogelgruppe, Muhr, Niedere Tauern Alpenhauptkamm, Niedere Tauern Süd, Loferer und Leoganger Steinberge, Steinernes Meer, Hochkönig, Hagengebirge, Göllstock, Tennengebirge, Gosaukamm, Pongauer Grasberge, Dientner Grasberge, Kitzbüheler Alpen, Glemmtal, Oberpinzgauer Grasberge</p>	
	<p>Osterhorngruppe, Gamsfeldgruppe, Untersbergstock, Chiemgauer Alpen, Heutal, Reiteralpe</p>	
	<p>Nockberge</p>	

Avalanche problems



Danger ratings



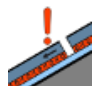

Expositions





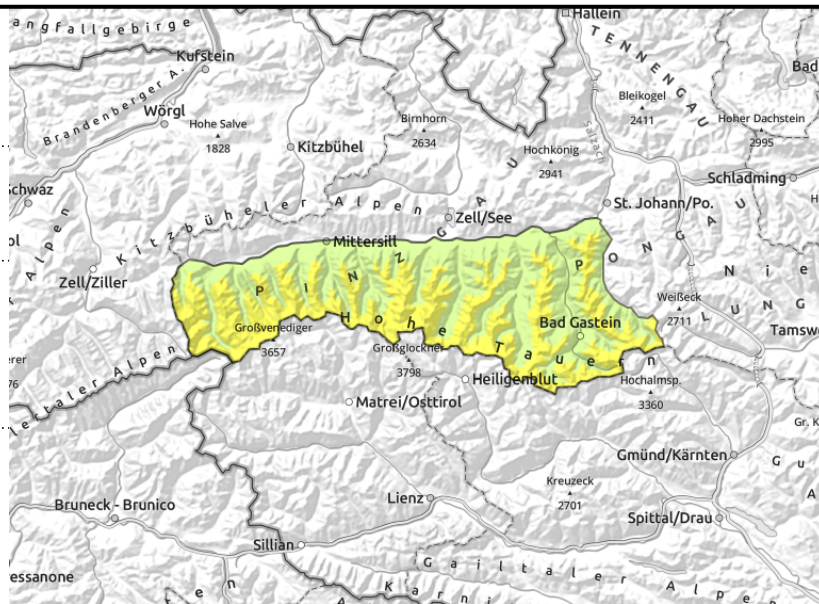
Avalanche report for **Saturday, 14.01.2023**

Großvenedigergruppe Alpenhauptkamm, Glocknergruppe Alpenhauptkamm, Glocknergruppe Nord, Großvenedigergruppe Nord, Goldberggruppe Alpenhauptkamm, Goldberggruppe Nord



  deeply embedded weak layers can lead to dangerously large avalanches: avoid large steep slopes

  fresh snowdrift accumulations on steep ridgeline slopes



Weak old snow and fresh snowdrifts

Avalanche danger above 2000 m is MODERATE, below that altitude danger is LOW. Avalanches can in some places be triggered easily in the weak old snow and grow to medium size, mostly by large additional loading. on shady slopes above 2000 m and on sunny slopes above 2600 m. Special caution is urged in transitions from shallow to deep snow.

Fresh snowdrift accumulations lie deposited on N/E ridgeline slopes, most are small but trigger-sensitive. In the afternoon, drifts will accumulate also distant from ridgelines due to southerly foehn wind. Caution urged in the foehn-impacted lanes.

Isolated glide-snow avalanches continue to be possible on steep grass-covered slopes.

Snowpack structure

Fresh drifts were and are still being deposited on N/E facing slopes, sometimes stop soft layers. On shady slopes at high altitudes and in high alpine regions, on sunny slopes above 2600 m, there are expansively metamorphosed (faceted) crystals embedded inside the old snow. The snowpack at high altitudes is heavily wind-impacted and highly irregular. At low and intermediate altitudes (<2000 m) there is little snow on the ground.

Weather

On Friday night a weak cold front will pass through, bringing about 5 cm of fresh snow and often strong NW winds.

On Saturday, residual clouds will disperse, winds ease rapidly. Sunshine until after midday. In the afternoon, clouds will shroud the peaks, strong-velocity southerly foehn wind will arise. At 2000 m: -6 to 0 degrees; at 3000 m -13 to -5 degrees.

On Sunday, southerly foehn wind will be strong until after midday. In the afternoon the next cold front will pass through from the northwest, visibility will deteriorate significantly and snowfall will set in.

Outlook

Not much change is expected to start with. Next week it will become noticeably more wintery.

Avalanche problems



Danger ratings

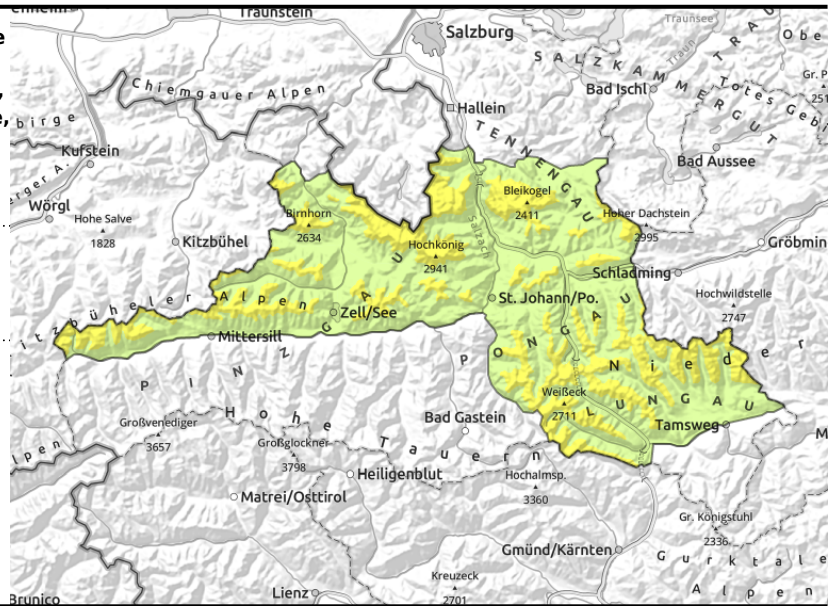




Expositions



Avalanche report for **Saturday, 14.01.2023**

Niedere Tauern Nord, Ankogelgruppe, Muhr, Niedere Tauern Alpenhauptkamm, Niedere Tauern Süd, Loferer und Leoganger Steinberge, Steinernes Meer, Hochkönig, Hagengebirge, Göllstock, Tennengebirge, Gosaukamm, Pongauer Grasberge, Dientner Grasberge, Kitzbüheler Alpen, Glemmtal, Oberpinzgauer Grasberge



  trigger-sensitive snowdrift masses in ridgeline gullies and bowls, caution at entries

Attention: trigger-sensitive snowdrift masses

Avalanche danger above 2300 m is MODERATE, below that altitude danger is LOW. The fresh snowdrifts can be triggered even by one sole winter sports enthusiast in some places and reach medium size, particularly in the regions where snowfall has been heaviest. The danger zones are located particularly in extended N/E-facing terrain, especially in ridgeline gullies and bowls. Trigger-sensitivity and size of the danger zones increase with ascending altitude.

On steep sunny grass-covered slopes, isolated, mostly small glide-snow avalanches are possible.

Snowpack structure

Fresh snowdrift accumulations are generally small, lie deposited on steep ridgeline slopes atop soft layers. Older drifts lie atop a weak old snowpack surface at high altitudes, particularly in wind-protected shady gullies and bowls on N/E facing slopes. The snowpack at high altitudes is heavily wind-impacted and irregular. At low and intermediate altitudes (<2000 m) there is little snow on the ground.

Weather

On Friday night a weak cold front will pass through, bringing about 5 cm of fresh snow and often strong NW winds.

On Saturday, residual clouds will disperse, winds ease rapidly. Sunshine until after midday. In the afternoon, clouds will shroud the peaks, strong-velocity southerly foehn wind will arise. At 2000 m: -6 to 0 degrees; at 3000 m -13 to -5 degrees.

On Sunday, southerly foehn wind will be strong until after midday. In the afternoon the next cold front will pass through from the northwest, visibility will deteriorate significantly and snowfall will set in.

Outlook

Not much change is expected to start with. Next week it will become noticeably more wintery.

Avalanche problems



Danger ratings

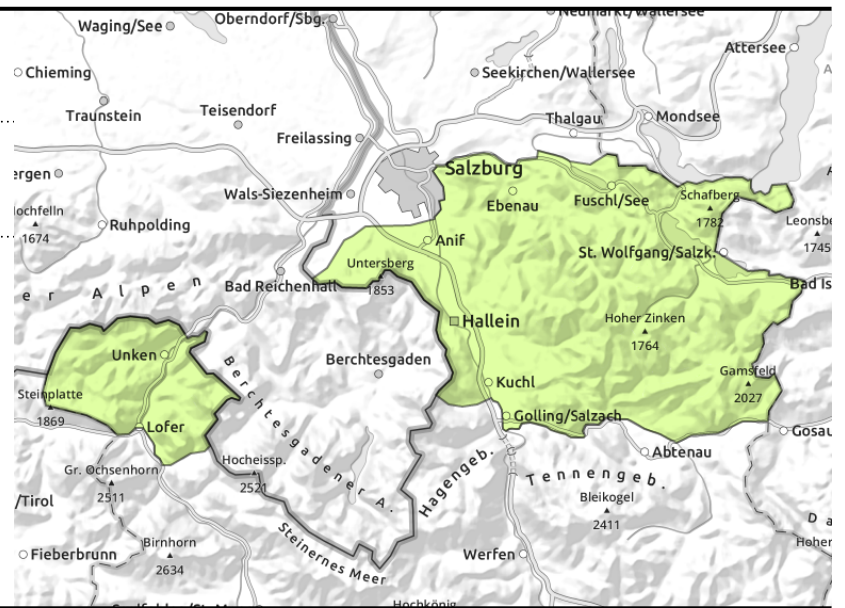
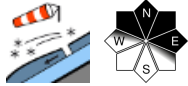


Expositions



Avalanche report for **Saturday, 14.01.2023**

**Osterhorngruppe, Gamsfeldgruppe,
Untersbergstock, Chiemgauer Alpen, Heutal,
Reiteralpe**



Low avalanche danger

Avalanche danger is low. Fresh snowdrift accumulations are too small and the snowpack too shallow to bury people in snow masses. Risks of taking a fall.

Snowpack structure

Atop little snow or bare ground, a bit of fresh snowfall / drifts will be deposited.

Weather

On Friday night a weak cold front will pass through, bringing about 5 cm of fresh snow and often strong NW winds.

On Saturday, residual clouds will disperse, winds ease rapidly. Sunshine until after midday. In the afternoon, clouds will shroud the peaks, strong-velocity southerly foehn wind will arise. At 2000 m: -6 to 0 degrees; at 3000 m -13 to -5 degrees.

On Sunday, southerly foehn wind will be strong until after midday. In the afternoon the next cold front will pass through from the northwest, visibility will deteriorate significantly and snowfall will set in.

Outlook

Not much change is expected to start with. Next week it will become noticeably more wintery.

Avalanche problems



Danger ratings



Expositions

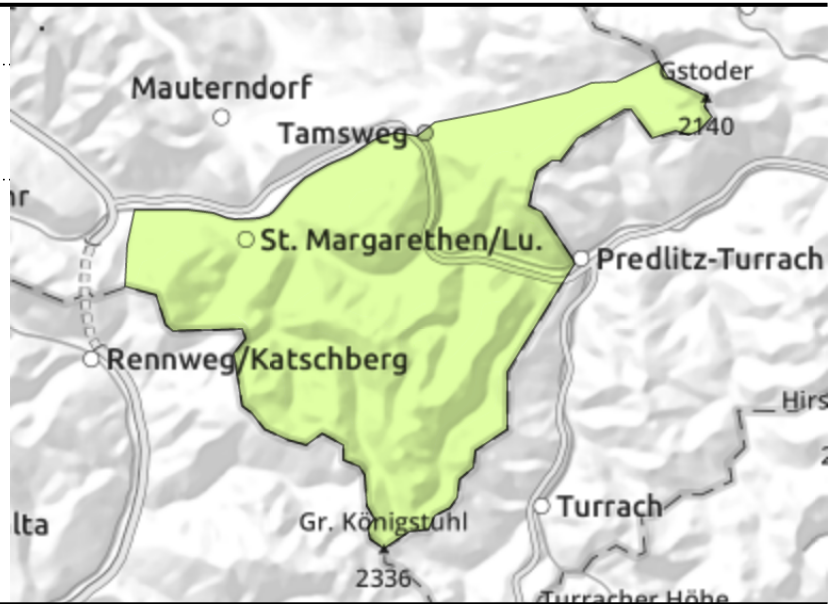


Avalanche report for **Saturday, 14.01.2023**

Nockberge



shallow snowdrift accumulations near ridgelines



Low avalanche danger

LOW avalanche danger prevails. Isolated small danger zones occur on very steep N/E facing slopes, behind abrupt discontinuities in the terrain, in gullies and bowls above 2000 m. They are easy to recognize as long as visibility is good. In icy and melt-freeze encrusted summit zones, the risks of being forced to take a fall require attentiveness.

Snowpack structure

The few cm of fresh snow in the last few days have been transported by stormy NW winds. Small snowdrift accumulations were deposited on N/E facing slopes.

Weather

On Friday night a weak cold front will pass through, bringing about 5 cm of fresh snow and often strong NW winds.

On Saturday, residual clouds will disperse, winds ease rapidly. Sunshine until after midday. In the afternoon, clouds will shroud the peaks, strong-velocity southerly foehn wind will arise. At 2000 m: -6 to 0 degrees; at 3000 m -13 to -5 degrees.

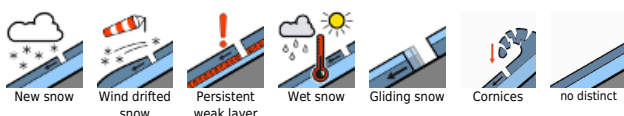
On Sunday, southerly foehn wind will be strong until after midday. In the afternoon the next cold front will pass through from the northwest, visibility will deteriorate significantly and snowfall will set in.

Outlook

Low avalanche danger will continue.

Translated by Jeffrey McCabe, www.creativtrans.com

Avalanche problems



Danger ratings



Expositions

