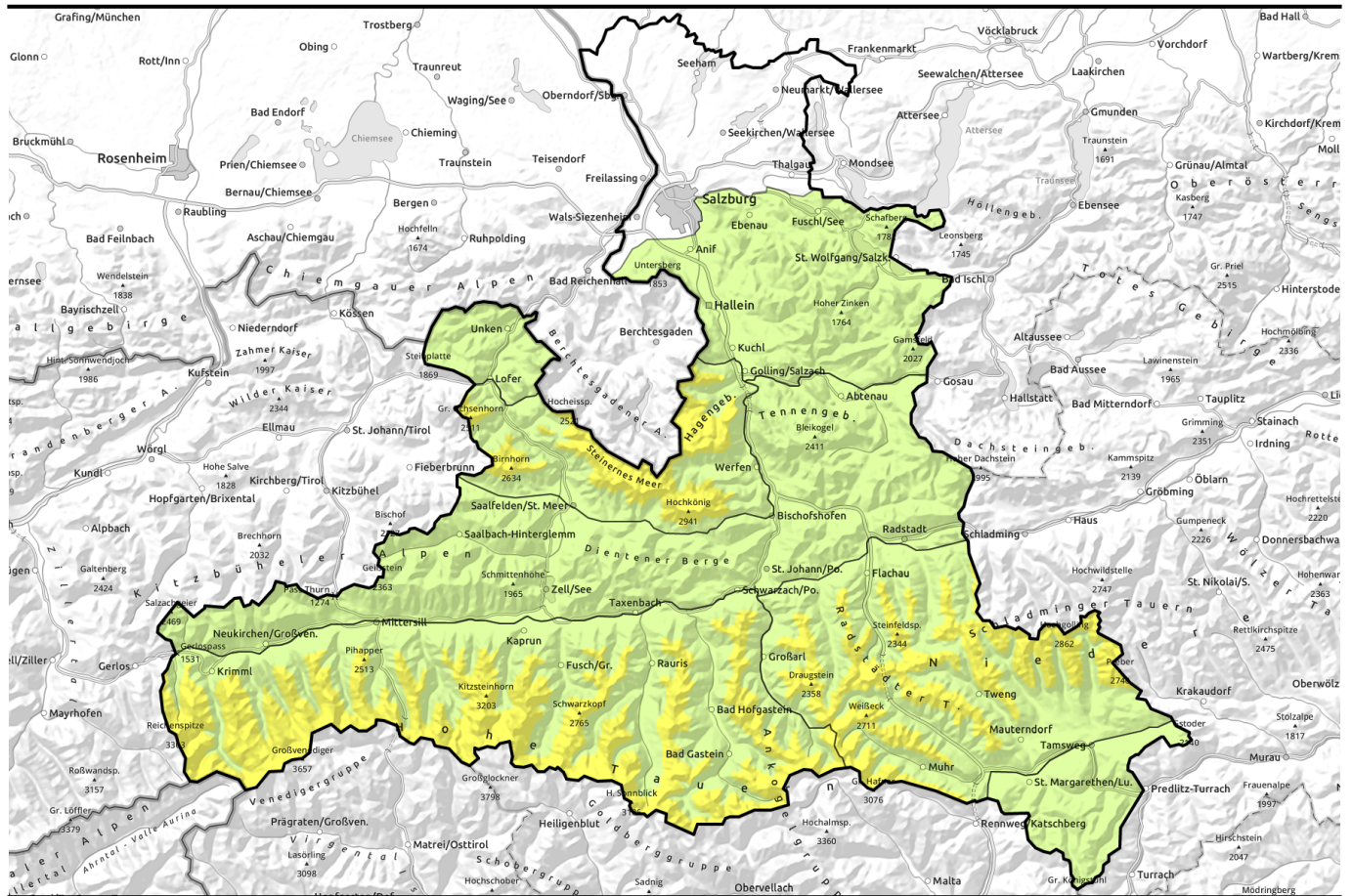


Avalanche report for Friday, 13.01.2023



Caution: fresh snowdrifts, weak old snow in Hohe Tauern

	<p>2000 m Großenedigergruppe Alpenhauptkamm, Glocknergruppe Alpenhauptkamm, Glocknergruppe Nord, Großenedigergruppe Nord, Goldberggruppe Alpenhauptkamm, Goldberggruppe Nord</p>	
	<p>2300 m Niedere Tauern Nord, Ankogelgruppe, Muhr, Niedere Tauern Alpenhauptkamm, Niedere Tauern Süd, Loferer und Leoganger Steinberge, Steinernes Meer, Hochkönig, Hagengebirge, Göllstock</p>	
	<p>Osterhorngruppe, Gamsfeldgruppe, Untersbergstock, Chiemgauer Alpen, Heutal, Reiteralpe</p>	
	<p>Nockberge</p>	
	<p>Kitzbüheler Alpen, Glemmtal, Oberpinzgauer Grasberge, Dientner Grasberge, Pongauer Grasberge, Tennengebirge, Gosaukamm</p>	

Avalanche problems



Danger ratings

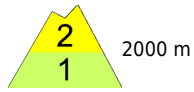


Expositions



Avalanche report for Friday, 13.01.2023

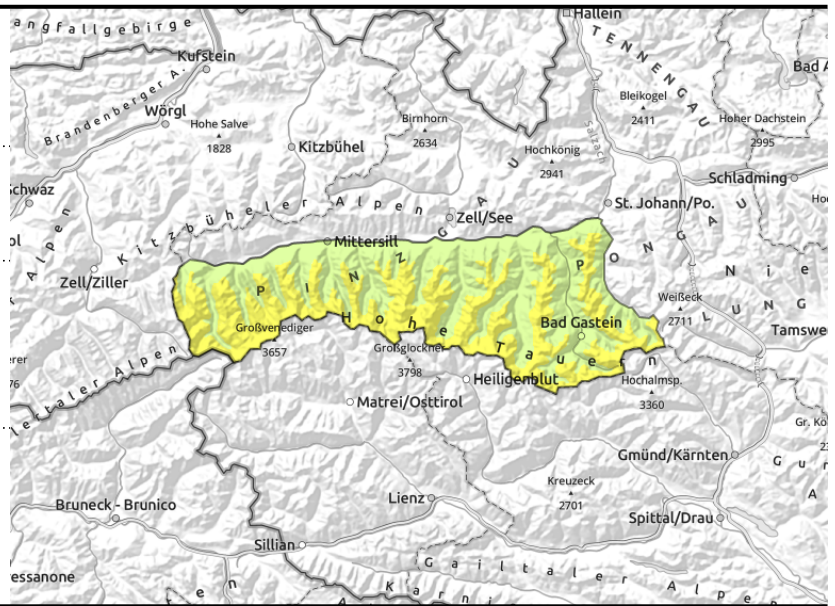
Großvenedigergruppe Alpenhauptkamm, Glocknergruppe Alpenhauptkamm, Glocknergruppe Nord, Großvenedigergruppe Nord, Goldberggruppe Alpenhauptkamm, Goldberggruppe Nord



deeply embedded weak layers can lead to dangerously large avalanches: AVOID large steep slopes



fresh snowdrift accumulations on steep ridgeline slopes



Weak old snow and fresh snowdrifts

Avalanche danger above 2000 m is MODERATE, below that altitude danger is LOW. Avalanches can in some places be triggered easily in the weak old snow and grow to medium size, on shady slopes above the timberline and on sunny slopes above 2600 m. Fresh snowdrift accumulations lie deposited on N/E facing slopes, mostly small but prone to triggering. These danger zones increase with ascending altitude and, moreover, are difficult to recognize due to poor visibility. Isolated glide-snow avalanches continue to be possible on steep grass-covered slopes.

Snowpack structure

Due to a cold front Wednesday night, 5-10 cm of fresh snow fell over widespread areas. Fresh, trigger-sensitive snowdrifts accumulated on N/E facing slopes. On shady slopes at high altitudes and in the high alpine regions, on sunny slopes above 2600m, there are expansively metamorphosed (faceted) layers deeply embedded inside the snowpack which are now blanketed by the fresh snow and snowdrifts from the last few days. The snowpack shows great wind impact at high altitudes, and is irregular. At low and intermediate altitudes (<2000 m) there is little snow on the ground.

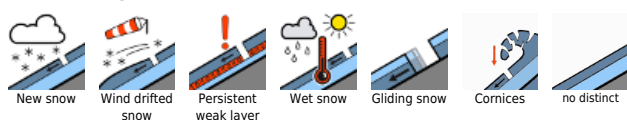
Weather

Clouds will dominate from early morning on Friday, hamper visibility. In the Northern Alps, rainfall can begin starting at midday (snowfall above 1400 m). In the Tauern and Nockberge it will remain dry, but cloud cover will dominate and in the afternoon rainfall (snow showers above 1200 m) will pass through. Brisk westerly winds will arise in the afternoon. At 2000 m: -1 degree; at 3000 m: -8 degrees.

Outlook

Little change. Caution urged towards snowdrifts and weak old snow.

Avalanche problems



Danger ratings

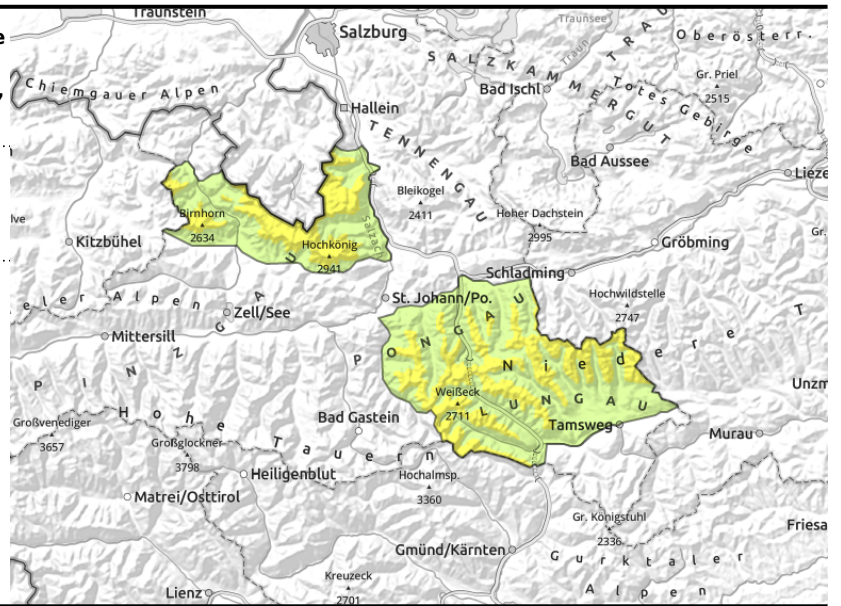
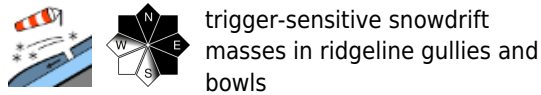
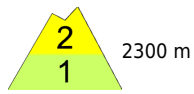


Expositions



Avalanche report for Friday, 13.01.2023

Niedere Tauern Nord, Ankogelgruppe, Muhr, Niedere Tauern Alpenhauptkamm, Niedere Tauern Süd, Loferer und Leoganger Steinberge, Steinernes Meer, Hochkönig, Hagengebirge, Göllstock



Attention: trigger-sensitive snowdrift masses at high altitude

Avalanche danger above 2300 m is MODERATE, below that altitude danger is LOW. The fresh snowdrifts can be triggered even by one sole winter sports enthusiast in some places and reach medium size, particularly in the regions where snowfall has been heaviest. The danger zones are located particularly in extended N/E-facing terrain, especially in ridgeline gullies and bowls. Trigger-sensitivity and size of the danger zones increase with ascending altitude.

On steep sunny grass-covered slopes, isolated, mostly small glide-snow avalanches are possible.

Snowpack structure

Fresh snowdrift accumulations are generally small, lie deposited on steep ridgeline slopes atop soft layers. Older drifts lie atop a weak old snowpack surface at high altitudes, particularly in wind-protected shady gullies and bowls on N/E facing slopes. The snowpack at high altitudes is heavily wind-impacted and irregular. At low and intermediate altitudes (<2000 m) there is little snow on the ground.

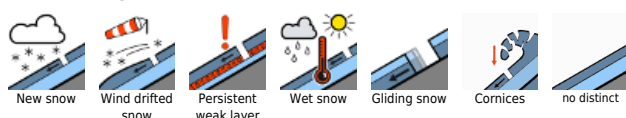
Weather

Clouds will dominate from early morning on Friday, hamper visibility. In the Northern Alps, rainfall can begin starting at midday (snowfall above 1400 m). In the Tauern and Nockberge it will remain dry, but cloud cover will dominate and in the afternoon rainfall (snow showers above 1200 m) will pass through. Brisk westerly winds will arise in the afternoon. At 2000 m: -1 degree; at 3000 m: -8 degrees.

Outlook

As a result of fresh snow and winds, small snowdrift accumulations can be generated anew.

Avalanche problems



Danger ratings

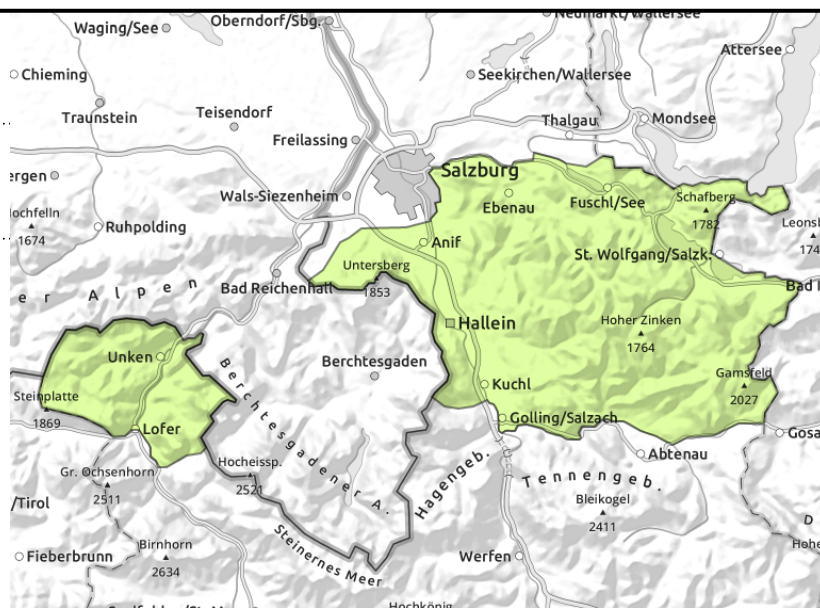
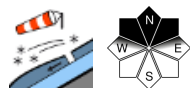


Expositions



Avalanche report for Friday, 13.01.2023

Osterhorngruppe, Gamsfeldgruppe, Untersbergstock, Chiemgauer Alpen, Heutal, Reiteralpe



Low avalanche danger

Avalanche danger is low. Fresh small snowdrift accumulations are unlikely to trigger (only on very steep (>35°) shady slopes in summit zones).

Snowpack structure

The shallow snowdrift accumulations which generated over the last few days have bonded well with the old snowpack surface. Most of the snow fell on bare ground.

Weather

Clouds will dominate from early morning on Friday, hamper visibility. In the Northern Alps, rainfall can begin starting at midday (snowfall above 1400 m). In the Tauern and Nockberge it will remain dry, but cloud cover will dominate and in the afternoon rainfall (snow showers above 1200 m) will pass through. Brisk westerly winds will arise in the afternoon. At 2000 m: -1 degree; at 3000 m: -8 degrees.

Outlook

Low avalanche danger will continue.

Avalanche problems



Danger ratings



Expositions

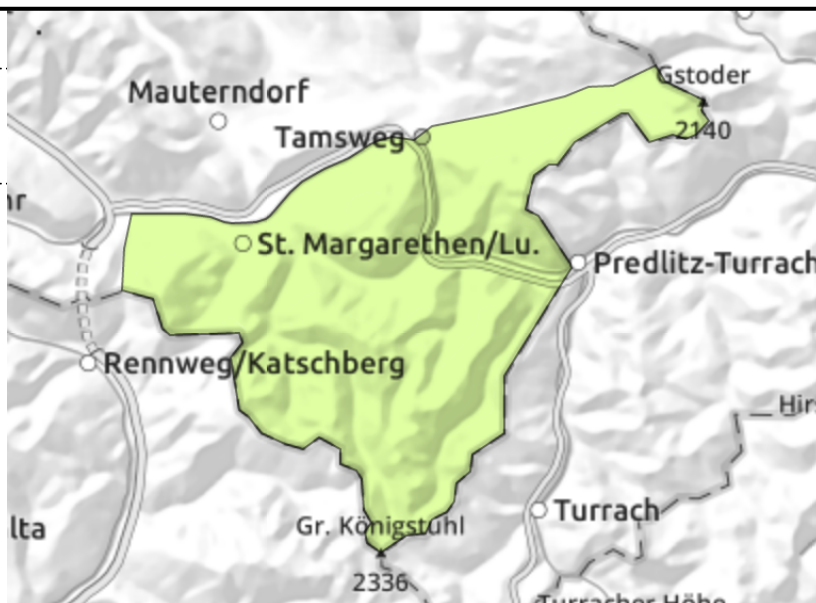


Avalanche report for Friday, 13.01.2023

Nockberge



shallow snowdrift accumulations near ridgelines



Low avalanche danger

Snowpack structure

The few cm of fresh snow in the last few days have been transported by stormy NW winds. Small snowdrift accumulations were deposited on N/E facing slopes, in isolated cases atop a loose old snowpack surface and are no longer prone to triggering.

Weather

Clouds will dominate from early morning on Friday, hamper visibility. In the Northern Alps, rainfall can begin starting at midday (snowfall above 1400 m). In the Tauern and Nockberge it will remain dry, but cloud cover will dominate and in the afternoon rainfall (snow showers above 1200 m) will pass through. Brisk westerly winds will arise in the afternoon. At 2000 m: -1 degree; at 3000 m: -6 degrees.

Outlook

Low avalanche danger will continue.

Avalanche problems



Danger ratings



Expositions

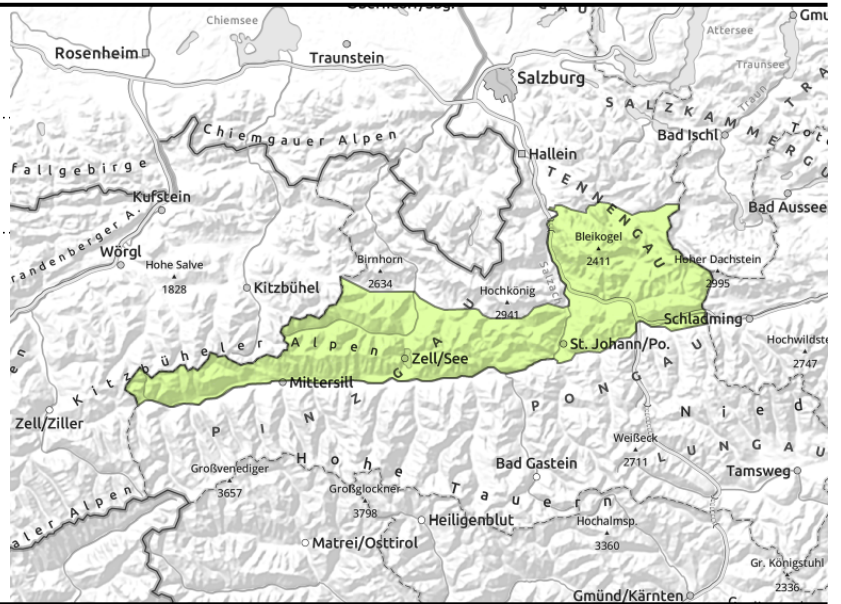


Avalanche report for Friday, 13.01.2023

Kitzbüheler Alpen, Glemmtal, Oberpinzgauer Grasberge, Dientner Grasberge, Pongauer Grasberge, Tennengebirge, Gosaukamm



trigger-sensitive snowdrifts in some places in gullies, bowls, ridgeline terrain



Snowdrift masses are frequently triggerable

Avalanche danger is LOW. Fresh snowdrift accumulations can be triggered in some places, but avalanche releases will generally be small-sized. Danger zones are found especially on N/E facing slopes, particularly in ridgeline gullies and bowls. The proneness to triggering and the size of the danger zones tend to increase with ascending altitude. Avalanche prone locations are difficult to recognize due to poor visibility.

Snowpack structure

Fresh snowdrift accumulations are generally small sized, lie deposited on steep ridgeline slopes, sometimes atop softened layers. Older snowdrifts have settled well and consolidated. The snowpack is in general quite stable. Weak layers embedded inside the old snowpack are seldom or no longer likely to trigger. There is generally little snow on the ground.

Weather

Clouds will dominate from early morning on Friday, hamper visibility. In the Northern Alps, rainfall can begin starting at midday (snowfall above 1400 m). In the Tauern and Nockberge it will remain dry, but cloud cover will dominate and in the afternoon rainfall (snow showers above 1200 m) will pass through. Brisk westerly winds will arise in the afternoon. AT 2000ß m: -1 degree; at 3000 m: -8 degrees.

Outlook

As a result of fresh fallen snow and wind, small snowdrift accumulations will be generated afresh.

Translated by Jeffrey McCabe, www.creativtrans.com

Avalanche problems



Danger ratings



Expositions

