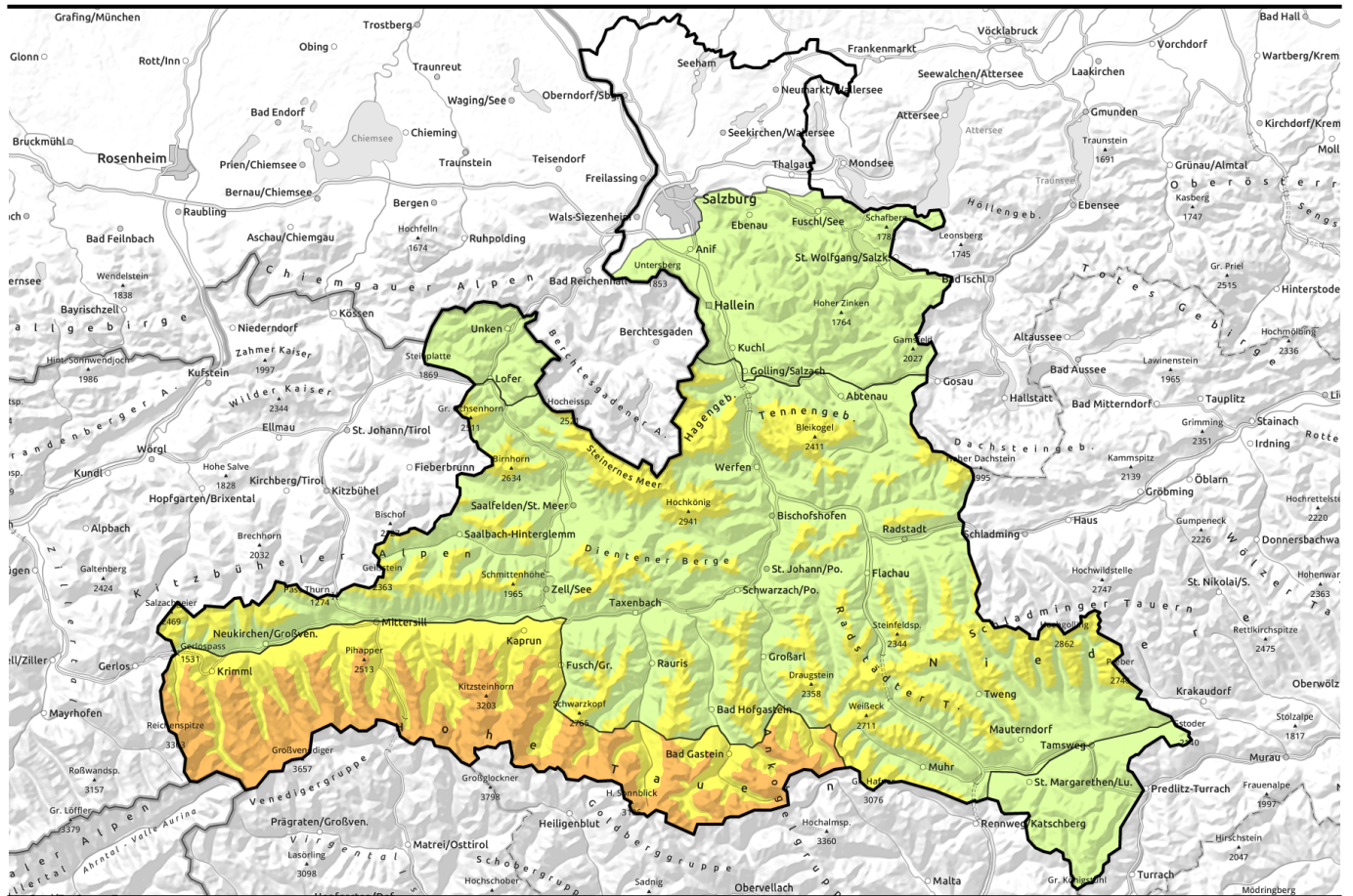


Avalanche report for Thursday, 12.01.2023



Considerable avalanche danger in Hohe Tauern

| | | |
|--|---|--|
| | <p>2200 m Großenedigergruppe Alpenhauptkamm, Glocknergruppe Alpenhauptkamm, Glocknergruppe Nord, Großenedigergruppe Nord, Goldberggruppe Alpenhauptkamm</p> | |
| | <p>forestline Oberpinzgauer Grasberge, Kitzbüheler Alpen, Glemmtal, Dientner Grasberge, Pongauer Grasberge, Niedere Tauern Nord, Goldberggruppe Nord, Ankogelgruppe, Muhr, Niedere Tauern Alpenhauptkamm, Tennengebirge, Gosaukamm, Niedere Tauern Süd, Loferer und Leoganger Steinberge, Steinernes Meer, Hochkönig, Hagengebirge, Göllstock</p> | |
| | <p>Osterhorngruppe, Gamsfeldgruppe, Untersbergstock, Chiemgauer Alpen, Heutal, Reiteralpe</p> | |
| | <p>Nockberge</p> | |

Avalanche problems



Danger ratings

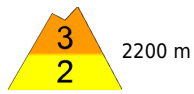



Expositions




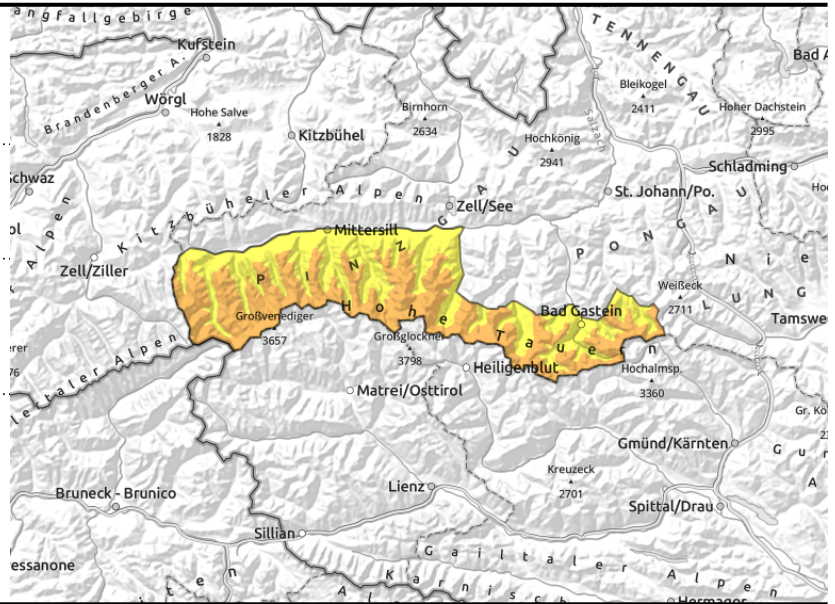
Avalanche report for Thursday, 12.01.2023

Großvenedigergruppe Alpenhauptkamm, Glocknergruppe Alpenhauptkamm, Glocknergruppe Nord, Großvenedigergruppe Nord, Goldberggruppe Alpenhauptkamm



 weak layers in the old snowpack are prone to triggering

 avoid freshly generated snowdrifts on steep ridgeline slopes



Fresh snowdrifts + weak old snow

Avalanche danger above 2200 m is CONSIDERABLE, below that altitude danger is MODERATE. Avalanches can in some places be triggered easily in the weak old snow and grow to medium size, on shady slopes above the timberline and on sunny slopes above 2600 m. As a result of fresh fallen snow and NW winds, small but trigger-sensitive snowdrift accumulations have been generated. These danger zones increase with ascending altitude and, moreover, are difficult to recognize due to poor visibility.

Below about 2400 m particularly on south-facing slopes, naturally triggered avalanches of medium size are possible on steep grass-covered slopes. In addition, due to daytime warming and some solar radiation, naturally triggered loose-snow avalanches can be expected on steep sunny slopes.

Snowpack structure

Due to a cold front Wednesday night, moderate snowfall amid moderate-to-strong NW winds will bring 5-10 cm of fresh snow over widespread areas. Fresh, trigger-sensitive snowdrifts will accumulate. On shady slopes at high altitudes and in the high alpine regions, on sunny slopes above 2600m, there are expansively metamorphosed (faceted) layers deeply embedded inside the snowpack which are now blanketed by the fresh snow and snowdrifts from the last few days.

Weather

On Thursday residual clouds will persist and hamper visibility. Except for that, sunshine will soon prevail. Starting at midday from the northwest, cloud cover will move in, and precipitation will start: rainfall up to 1200 m, snowfall above that altitude. Winds will be brisk from SW directions. At 2000 m: -2 degrees; at 3000 m: -8 degrees.

Outlook

The snowpack is settling and consolidating. Avalanche danger will slowly recede.

Avalanche problems



Danger ratings

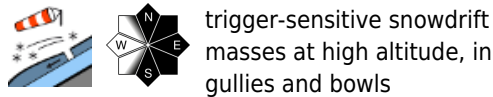
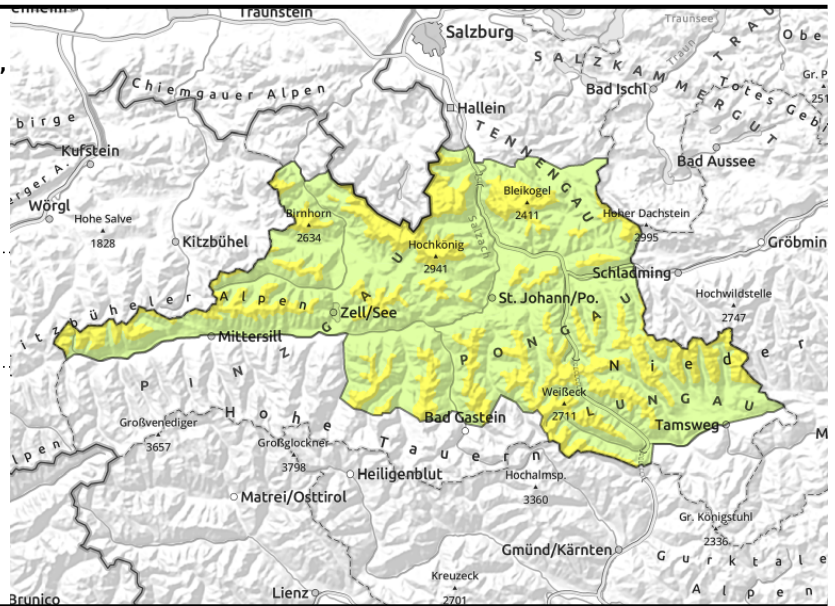


Expositions



Avalanche report for **Thursday, 12.01.2023**

Oberpinzgauer Grasberge, Kitzbüheler Alpen, Glemmtal, Dientner Grasberge, Pongauer Grasberge, Niedere Tauern Nord, Goldberggruppe Nord, Ankogelgruppe, Muhr, Niedere Tauern Alpenhauptkamm, Tennengebirge, Gosaukamm, Niedere Tauern Süd, Loferer und Leoganger Steinberge, Steinernes Meer, Hochkönig, Hagengebirge, Göllstock



Trigger-sensitive snowdrift masses at high altitude

Avalanche danger above 2200 m is MODERATE, below that altitude danger is LOW. As a result of fresh fallen snow and NW winds, small but trigger-sensitive snowdrift accumulations have been generated. These can be triggered even by one sole winter sports enthusiast in some places and reach medium size, particularly in the regions where snowfall has been heaviest. The danger zones are located particularly in extended east-facing terrain, especially in ridgeline gullies and bowls. Trigger-sensitivity and size of the danger zones increase with ascending altitude.

On steep sunny grass-covered slopes, isolated, mostly small glide-snow avalanches are possible. In addition, as a result of solar radiation, small loose-snow avalanches are possible on steep sunny slopes.

Snowpack structure

Due to a cold front Wednesday night, moderate snowfall amid moderate-to-strong NW winds will bring 5-10 cm of fresh snow over widespread areas. Fresh, trigger-sensitive snowdrifts will accumulate, particularly in wind-protected terrain where they will be deposited atop soft layers. Older snowdrifts lie deposited on weak old snowpack layers above 2200 m, particularly in wind-protected shady gullies and bowls. Below 1800 m, on sunny slopes further up, the snow fell on bare ground, often on warm ground. In these places, heed is required towards a gliding away of the entire snowpack.

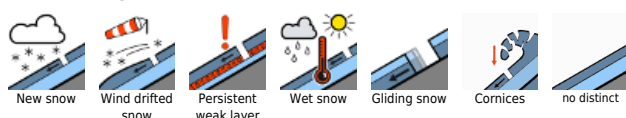
Weather

On Thursday residual clouds will persist and hamper visibility. Except for that, sunshine will soon prevail. Starting at midday from the northwest, cloud cover will move in, and precipitation will start: rainfall up to 1200 m, snowfall above that altitude. Winds will be brisk from SW directions. At 2000 m: -2 degrees; at 3000 m: -8 degrees.

Outlook

The snowpack is settling and consolidating. Avalanche danger will slowly recede.

Avalanche problems



Danger ratings

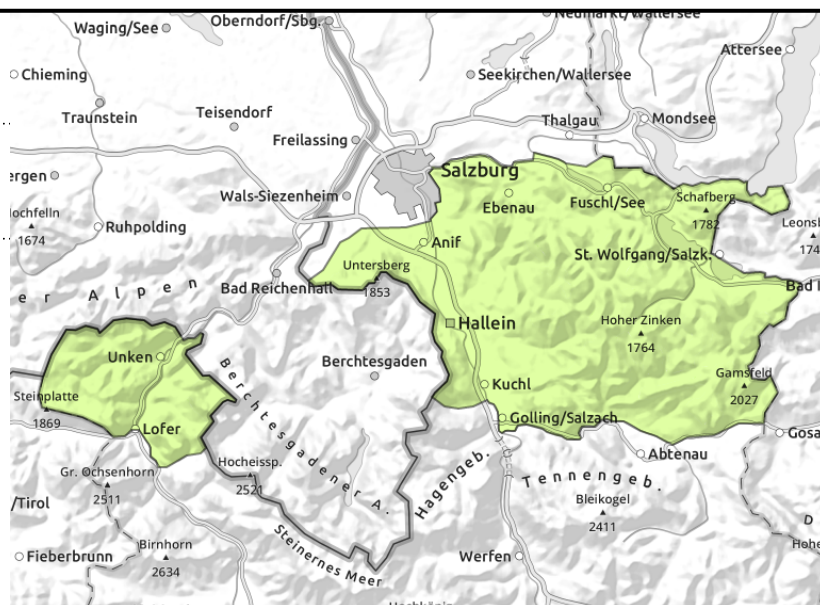
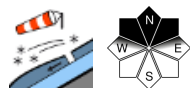


Expositions



Avalanche report for Thursday, 12.01.2023

Osterhorngruppe, Gamsfeldgruppe, Untersbergstock, Chiemgauer Alpen, Heutal, Reiteralpe



Isolated small snowslides possible

Avalanche danger is low. Fresh small snowdrift accumulations can in isolated cases be triggered where there is an old snowpack beneath them. Danger zones occur in very steep shady terrain in NW/E wind-loaded gullies and bowls. The risks of taking a fall outweigh those of being buried in snow masses.

Snowpack structure

On Wednesday night, 5 cm of fresh snow is expected on the summits, amid some wind. The shallow snowdrift accumulations of recent days have bonded well with the old snowpack. Most of the fresh snow fell on bare ground.

Weather

On Thursday residual clouds will persist and hamper visibility. Except for that, sunshine will soon prevail. Starting at midday from the northwest, cloud cover will move in, and precipitation will start: rainfall up to 1200 m, snowfall above that altitude. Winds will be brisk from SW directions. At 2000 m: -2 degrees; at 3000 m: -8 degrees.

Outlook

Low avalanche danger will continue.

Avalanche problems



Danger ratings



Expositions

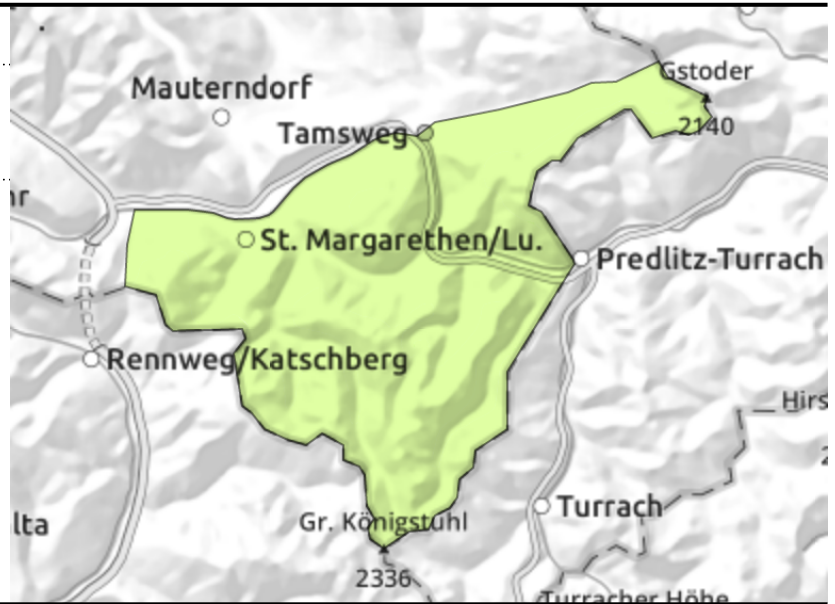


Avalanche report for **Thursday, 12.01.2023**

Nockberge



shallow snowdrift accumulations near ridgelines



Low avalanche danger

LOW avalanche danger prevails. Isolated small danger zones occur on very steep N/E facing slopes, behind abrupt discontinuities in the terrain, in gullies and bowls above 2000 m. They are easy to recognize as long as visibility is good. In icy and melt-freeze encrusted summit zones, the risks of being forced to take a fall require attentiveness.

Snowpack structure

The few cm of fresh snow in the last few days have been transported by stormy NW winds. Small snowdrift accumulations were deposited on N/E facing slopes, in isolated cases atop a loose old snowpack surface and are no longer prone to triggering. As a result of the cold front on Thursday, very little fresh snowfall is anticipated.

Weather

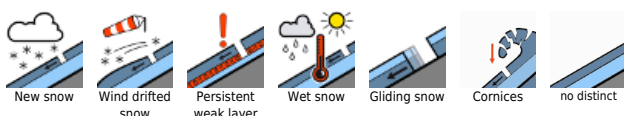
On Thursday residual clouds will persist and hamper visibility. Except for that, sunshine will soon prevail. Starting at midday from the northwest, cloud cover will move in, and precipitation will start: rainfall up to 1200 m, snowfall above that altitude. Winds will be brisk from SW directions. At 2000 m: -2 degrees; at 3000 m: -8 degrees.

Outlook

Low avalanche danger will continue.

Translated by Jeffrey McCabe, www.creativtrans.com

Avalanche problems



Danger ratings



Expositions

