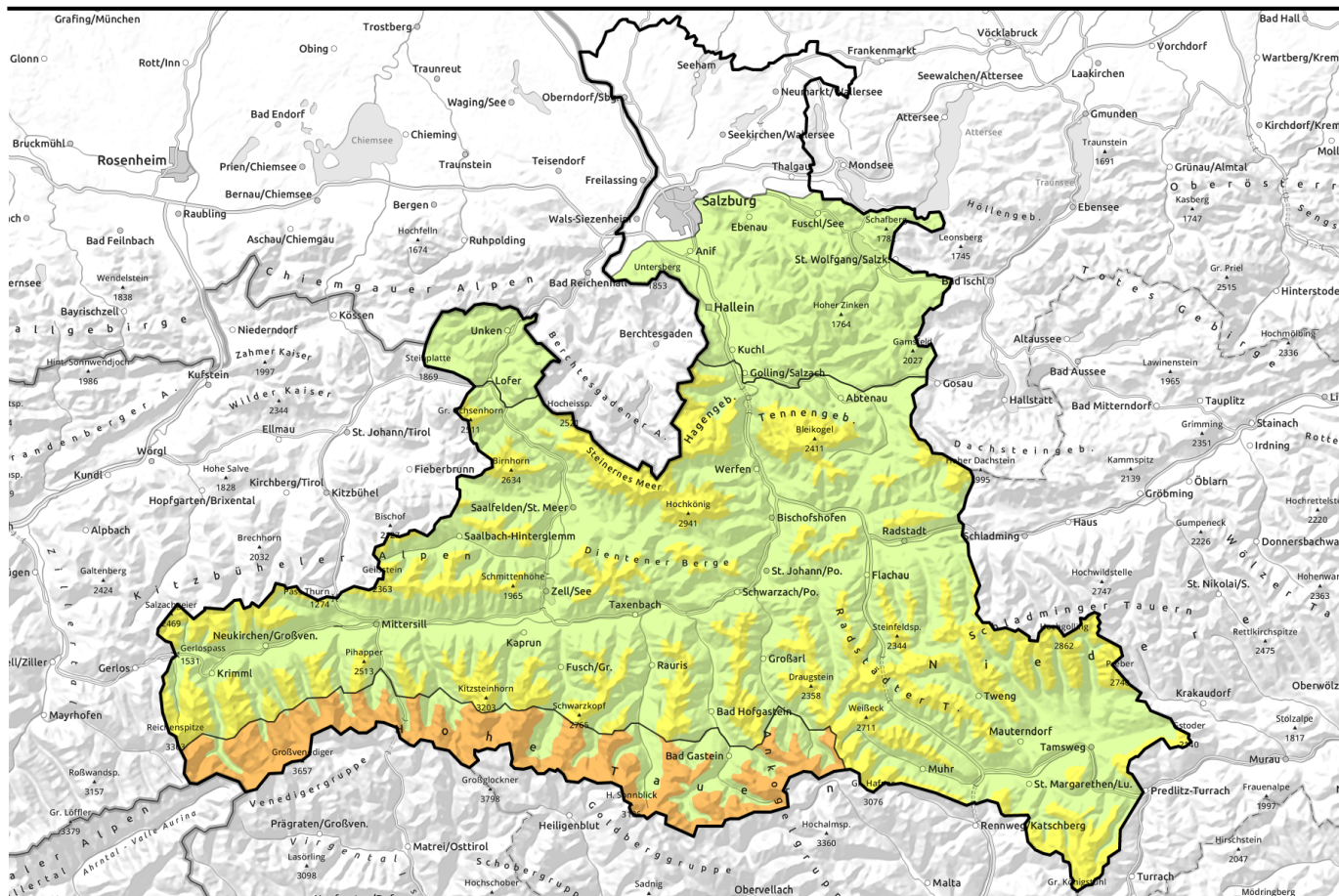


Avalanche report for Monday, 09.01.2023



Fresh snowfall plus winds: increase in avalanche danger

	<p>forestline Großenedigergruppe Alpenhauptkamm, Glocknergruppe Alpenhauptkamm, Goldberggruppe Alpenhauptkamm</p>	
	<p>2200 m Loferer und Leoganger Steinberge, Steinernes Meer, Hochkönig, Hagengebirge, Göllstock, Tennengebirge, Gosaukamm, Niedere Tauern Süd, Oberpinzgauer Grasberge, Kitzbüheler Alpen, Glemmtal, Dientner Grasberge, Pongauer Grasberge, Nockberge, Niedere Tauern Nord, Niedere Tauern Alpenhauptkamm, Großenedigergruppe Nord, Goldberggruppe Nord, Glocknergruppe Nord, Ankogelgruppe, Muhr</p>	
	<p>Osterhorngruppe, Gamsfeldgruppe, Untersbergstock, Chiemgauer Alpen, Heutal, Reiteralpe</p>	

Avalanche problems



Danger ratings

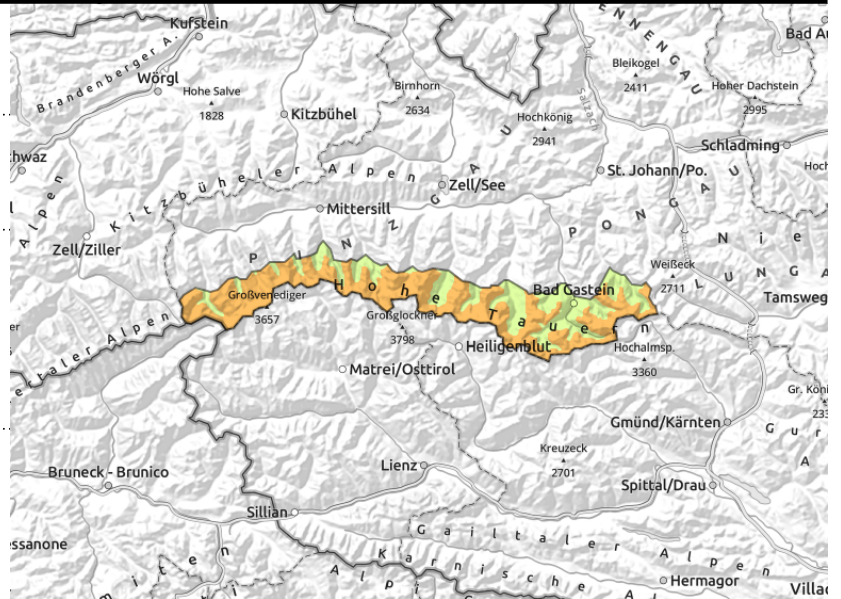


Expositions

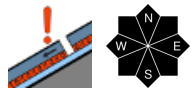


Avalanche report for Monday, 09.01.2023

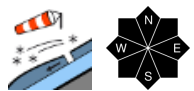
Großvenedigergruppe Alpenhauptkamm,
Glocknergruppe Alpenhauptkamm, Goldberggruppe
Alpenhauptkamm



forestline



weak layers in the old snowpack demand immense restraint, whumpf noises and glide cracks are signals of imminent danger



snowdrift accumulations in all aspects at high altitudes are trigger-sensitive, difficult to recognize due to poor visibility

Weak layers in the old snowpack and trigger-sensitive snowdrift accumulations: CAUTION.

Avalanche danger above the timberline is CONSIDERABLE, below that altitude danger is LOW. Avalanches can in some places be triggered in the weak layers even by one sole winter sports enthusiast and attain medium size. Danger zones are located on steep shady slopes above the timberline and on sunny slopes above 2600 m. Particularly unfavourable are wind-protected shady bowls at the foot of rock walls.

In addition, freshly generated snowdrift accumulations are prone to triggering. They occur also distant from ridgelines and should be circumvented when possible. They are difficult to recognize due to poor visibility. Danger zones will increase in size and spread as the day unfolds. Also isolated naturally triggered avalanches are possible.

Snowpack structure

By Monday afternoon, 15-25 cm of fresh snow are anticipated, more from place to place. Winds will strong, often stormy, from W/NW. On shady slopes at high altitudes and in high alpine regions, on sunny slopes above 2600 m, there are expansively metamorphosed (faceted) layers embedded inside the snowpack. Fresh snow and freshly generated snowdrifts blanket the weak old snowpack layers and are prone to triggering in some places.

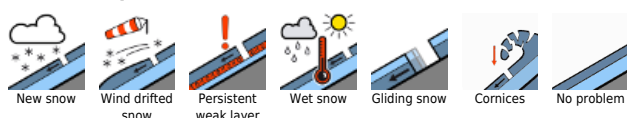
Weather

On Monday the peaks will be shrouded in heavy cloud, repeated bouts of snowfall are anticipated amid strong W/NW winds. In the afternoon the precipitation will slacken off, visibility will remain reduced. At 2000 m, between -6 and -4 degrees; at 3000 m, -12 degrees.

Outlook

Some fresh snow and often stormy winds on Tuesday. No significant change in avalanche danger levels.

Avalanche problems



Danger ratings

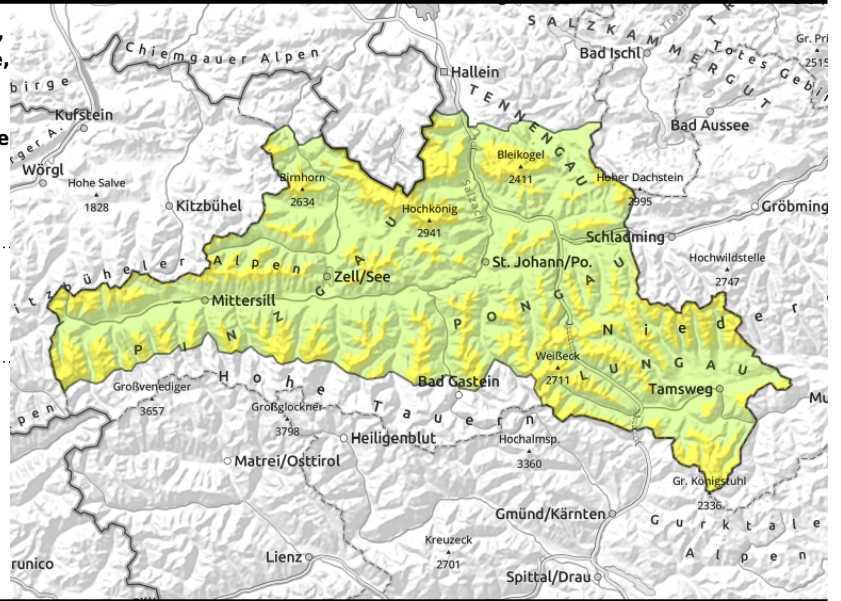


Expositions



Avalanche report for Monday, 09.01.2023

Loferer und Leoganger Steinberge, Steinernes Meer, Hochkönig, Hagengebirge, Göllstock, Tennengebirge, Gosaukamm, Niedere Tauern Süd, Oberpinzgauer Grasberge, Kitzbüheler Alpen, Glemmtal, Dientner Grasberge, Pongauer Grasberge, Nockberge, Niedere Tauern Nord, Niedere Tauern Alpenhauptkamm, Großvenedigergruppe Nord, Goldberggruppe Nord, Glocknergruppe Nord, Ankogelgruppe, Muhr



snowdrift accumulations in all aspects at high altitudes are trigger-sensitive, difficult to recognize due to poor visibility

Trigger-sensitive snowdrift accumulations

Avalanche danger above 2200 m is MODERATE, below that altitude danger is LOW. The fresh snowdrift accumulations can often be triggered by one sole winter sports enthusiast, and then attain medium size avalanches. Danger zones are located on N/E facing shady slopes above the timberline and in shady gullies and bowls. They are difficult to recognize. Trigger-sensitivity and size of the avalanche prone locations increase with ascending altitude. In the zones bordering on Danger Level 3 (CONSIDERABLE) the danger zones are more numerous and the risks somewhat higher.

Snowpack structure

By Monday afternoon, 10-15 cm of fresh snow are anticipated, more from place to place. The W/NW winds will strong along the Main Alpine Ridge, often stormy. The snow transported by the winds and deposited at high altitudes atop the weak old snowpack are often prone to triggering.

Weather

On Monday the peaks will be shrouded in heavy cloud, repeated bouts of snowfall are anticipated amid strong W/NW winds. In the afternoon the precipitation will slacken off, visibility will remain reduced. At 2000 m, between -6 and -4 degrees; at 3000 m, -12 degrees.

Outlook

Some fresh snow and often stormy winds on Tuesday. No significant change in avalanche danger levels.

Avalanche problems



Danger ratings



Expositions

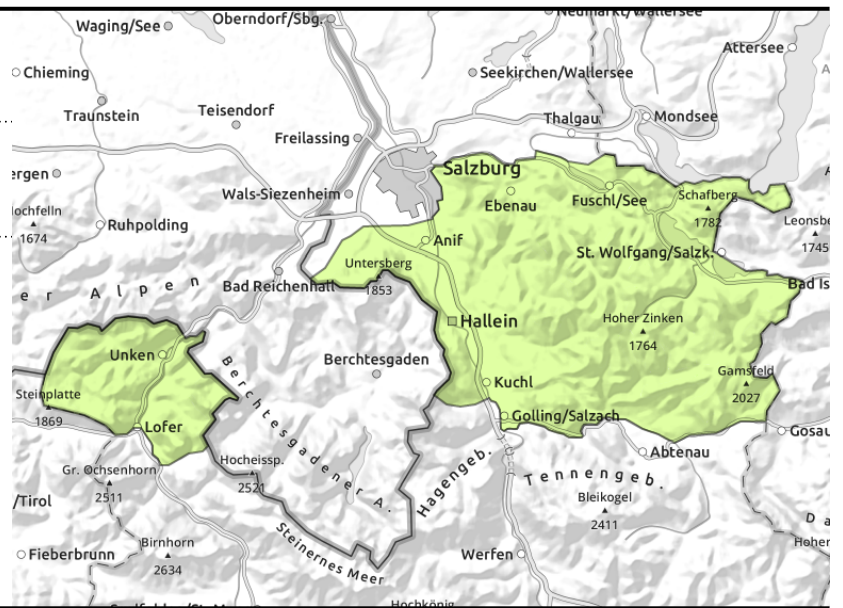


Avalanche report for Monday, 09.01.2023

Osterhorngruppe, Gamsfeldgruppe, Untersbergstock, Chiemgauer Alpen, Heutal, Reiteralpe



small snowdrift masses triggerable in isolated cases



Small snowdrift accumulations

Avalanche danger is low. Fresh small snowdrift accumulations can in isolated cases be triggered where there is an old snowpack beneath them. Danger zones occur in very steep shady terrain in NW/E wind-loaded gullies and bowls. The risks of taking a fall outweigh those of being buried in snow masses.

Snowpack structure

A bit of fresh snow will be transported by often strong winds over the melt-freeze encrusted and icy snowpack surfaces. In isolated spots they will be deposited atop a loosely-packed old snowpack. Mostly the bonding of fresh snow to old snow is favourable. In some spots, the snow will be deposited on bare ground.

Weather

On Monday the peaks will be shrouded in heavy cloud, repeated bouts of snowfall are anticipated amid strong W/NW winds. In the afternoon the precipitation will slacken off, visibility will remain reduced. At 2000 m, between -6 and -4 degrees; at 3000 m, -12 degrees.

Outlook

No significant change.

Translated by Jeffrey McCabe, www.creativtrans.com

Avalanche problems



Danger ratings



Expositions

